



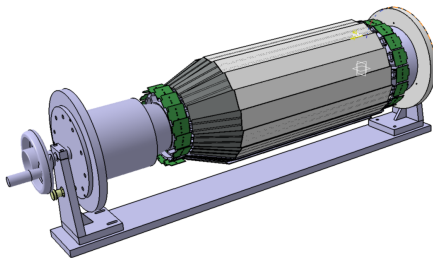
## Plans and status for SVD Mockup at Krakow

- ① Motivation
- ② Current status
- ③ Limitation

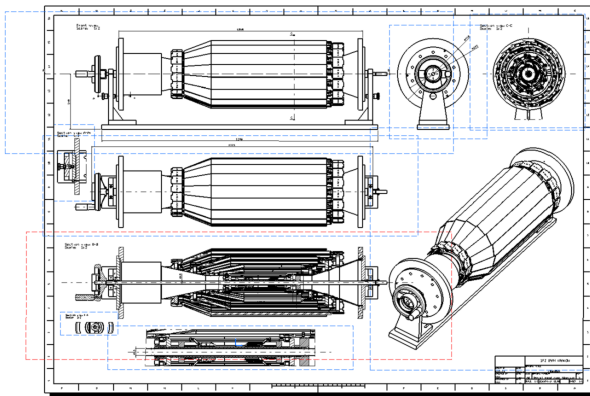
*Outline*

\* The BEAST == **B**eam **E**xorcism for **A** **S**table BELLE Experiment

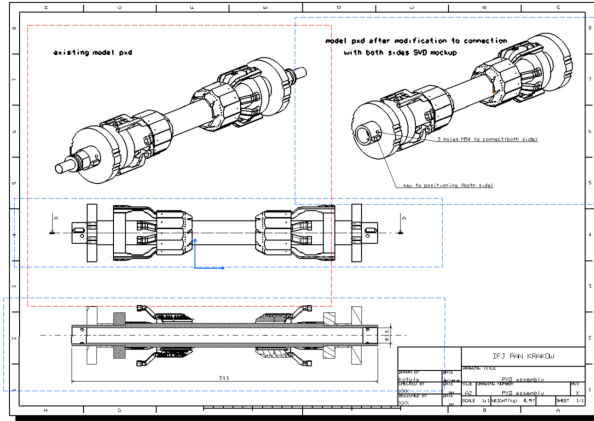
- Thermal mockup for gas flow(?)
- Mechanical study
- For PXD integration and thermal tests



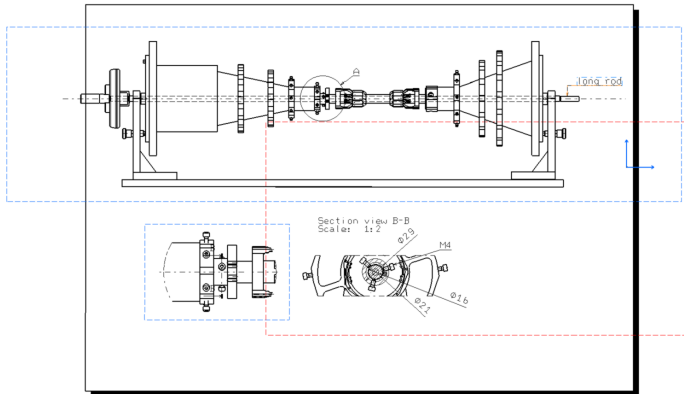
compromise needed → ladders material.



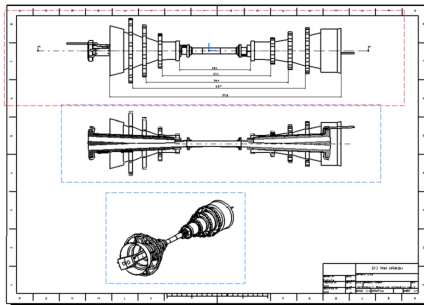
# PXD mockup clashed with SVD



# SVD mockup Fixing

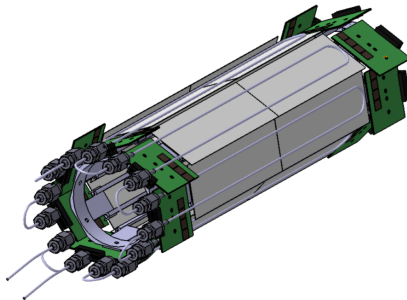


# New, more realistic, SVD/PXD plans received in July



## Cooling tubes

- Study was performed for cooling pipe installation in mockup.
- Bending, welding possible but very difficult (small diameter).
- Probably would need to be ordered from external contractor if really needed



Conclusion, baseline is, we will not do cooling tubes. what about the thermal role of the mockup then ?