

Computing at MPP

Arthur Erhardt

**MPP Computing Commission
+ Fachabteilung IT**

MPP Project Review, 16.12.2014

Personnel Fachabteilung IT

	Linux	MS	Mac	SW	LAN	HW	Print	Phone
Erhardt, A.	X	X	X	X	X	X	X	X
Leupold, U.	X	X	X	X	X	X		X
Krämer, M.					X			X
Pan, Y.	(X)	X						
Salihagic, D.	X			X		X		
Krebs, K.					X			X
Kriesel, A.	X		X			X	X	X
Haunolder, T.	X	X	X			X		
Zoupanos, S.	(temp.): Implementation of SSO @ MPP							

Hardware Overview

- Central Servers
 - 35 file servers with ~ 100 TB
 - CEPH storage cluster, currently 280 TB
 - mail, web, DNS, accounts, backup, printer, ...
- Experimental and engineering groups
 - ~400 PCs, 2/3 Linux, 1/3 MS
- Theory group
 - ~ 100 PCs

Mail service

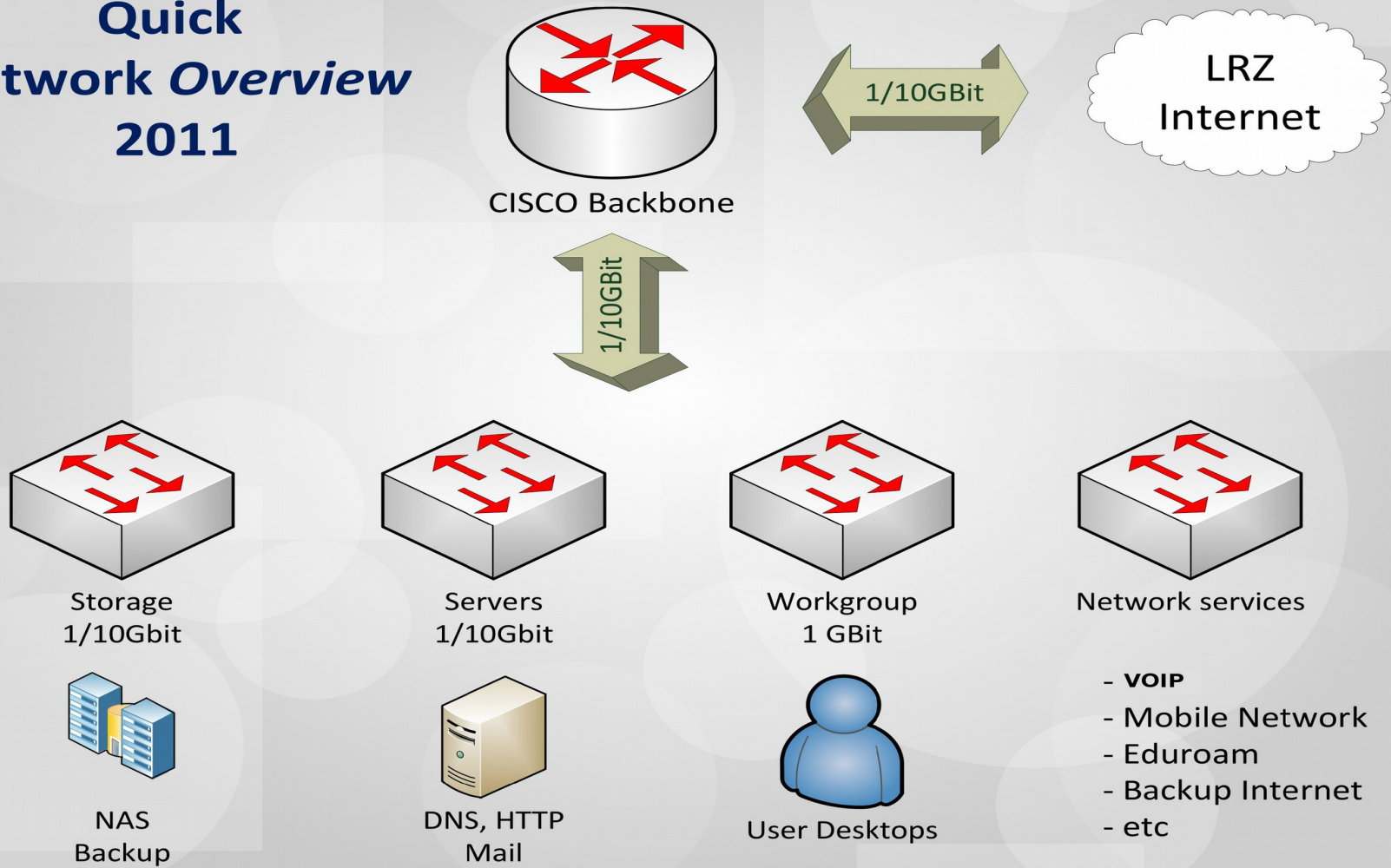
- Upgrade of Mailserver HW
 - 12+12 CPU cores, 64GB RAM, 8TB disk
 - SSD-cached mail storage (bcache)
 - More efficient mail data format (maildir)
- about two orders of magnitude faster
- currently no bottleneck, future replacement planned only due to hardware aging

Container Village

- Roll-out of IT infrastructure completed
 - Wired LAN: new cabling
 - WiFi: works stable after initial trouble
 - PCs, copier, printers, ...

LAN

Quick Network Overview 2011



LAN (2)

- New Cisco central router
 - New Hardware for reliability reasons
 - More performance and flexibility
 - Possible emergency fallback to old router
 - Configuration and commissioning in Q1/2015

LAN (3)

- New Firewall Hardware
 - Two x86_64 servers, one active, one fallback
 - Faster network interfaces (real 10GbE, not limited to 5 GbE due to PCIe bottleneck)
 - Remote management via IPMI

LAN (4)

- EduRoam @ MPP
 - Eduroam WiFi access enabled
 - Works stable after some fine-tuning
 - Minor trouble due to misconfigured clients (Windows, MacOS X)

CEPH Storage Cluster

- CEPH storage cluster @ MPP:
 - 9 nodes, 72 disks, 280 TB raw
 - accessible via autofs from any Linux PC
(/remote/ceph/{u/user}|{g/group}/)
 - cheap, redundant storage: failure of any one or selected two nodes is covered, but **no backup**
 - after 1 year of testing: stable operation, but performance problems after disk replacement
 - much of the work courtesy O. Schulz (GERDA)

CEPH Storage Cluster (2)

- Future plans:
 - 3 more storage nodes
 - 3 dedicated management nodes
 - split server locations
 - 10 GbE interconnects between nodes
 - 40 GbE interconnects between racks
 - new switch and cablework needed

Software overview

- Operating Systems
 - Linux (Ubuntu 12.04/10.04 (ATLAS/BELLE/ILC)), OpenSUSE 13.1 (Theory), RHEL & clones
 - AIX, Solaris (Electronics workshop)
 - MacOSX, VMS (without IT infrastructure)
 - MS Windows (Admin., Labs, h1win, thwin)
- Applications / libraries
 - Mathematica, Maple, Portland & intel compilers, IDL, NAG, Matlab, ...
 - OSS with IT group & mppcc

Software Applications

- Commercial
 - Oracle 10, Infopark Fiona cms, Tivoli backup, Gleitzeitserver, LogInventory, HP ProCurve Manager, ...
 - Cisco Prime Infrastructure (WLAN mgr.)
- Open Source
 - Indico, mysql, root, CERNLIB, phpBB, twiki, Asterisk, eGroupware, kvm, ...

Phonesystem Status

- Phone system works mostly stable
- New hardware purchased and set up
- OS and asterisk upgrades in Q1/2015
- User feature requests will be implemented after upgrades

MPP computing commission

- Subcommittee of IA
 - members: Abt, Bethke, Erhardt, Hahn, Kluth, Leupold, Reimann, Simon, Stonjek
 - meetings are public
- Mandate
 - oversight of IT operations
 - medium- and longterm planning
- Please consult before buying hardware or requiring services!

Rahmenverträge

- **MPG has procurement contracts for IT**
 - hardware, LAN, software, services
 - order without tendering procedure
 - (mostly) competitive prices (still check F&L or street prices)
 - Fujitsu, HP, IBM, Acer, Dell, Lenovo, Apple, ...
- **Experience**
 - good for standard orders
 - companies respond well

Summary

- MPP IT landscape continuously changing
 - rapid changes in hard- and software
 - Keeps IT staff busy
- Mass data storage at MPP growing fast
 - > 100 TB. CPU power? Management?
 - use RZG cluster & storage (10GbE to MPP)

Outlook: IT Plans for 2015

- Implement SSO solution @ MPP
- Phase out all 100MBps Ethernet in scientific environments.
- Upgrade Linux Desktops to Ubuntu 14.04.
- CEPH: Upgrade networking, add storage
- Tivoli Backup**2 to RZG: All necessary parts in place