

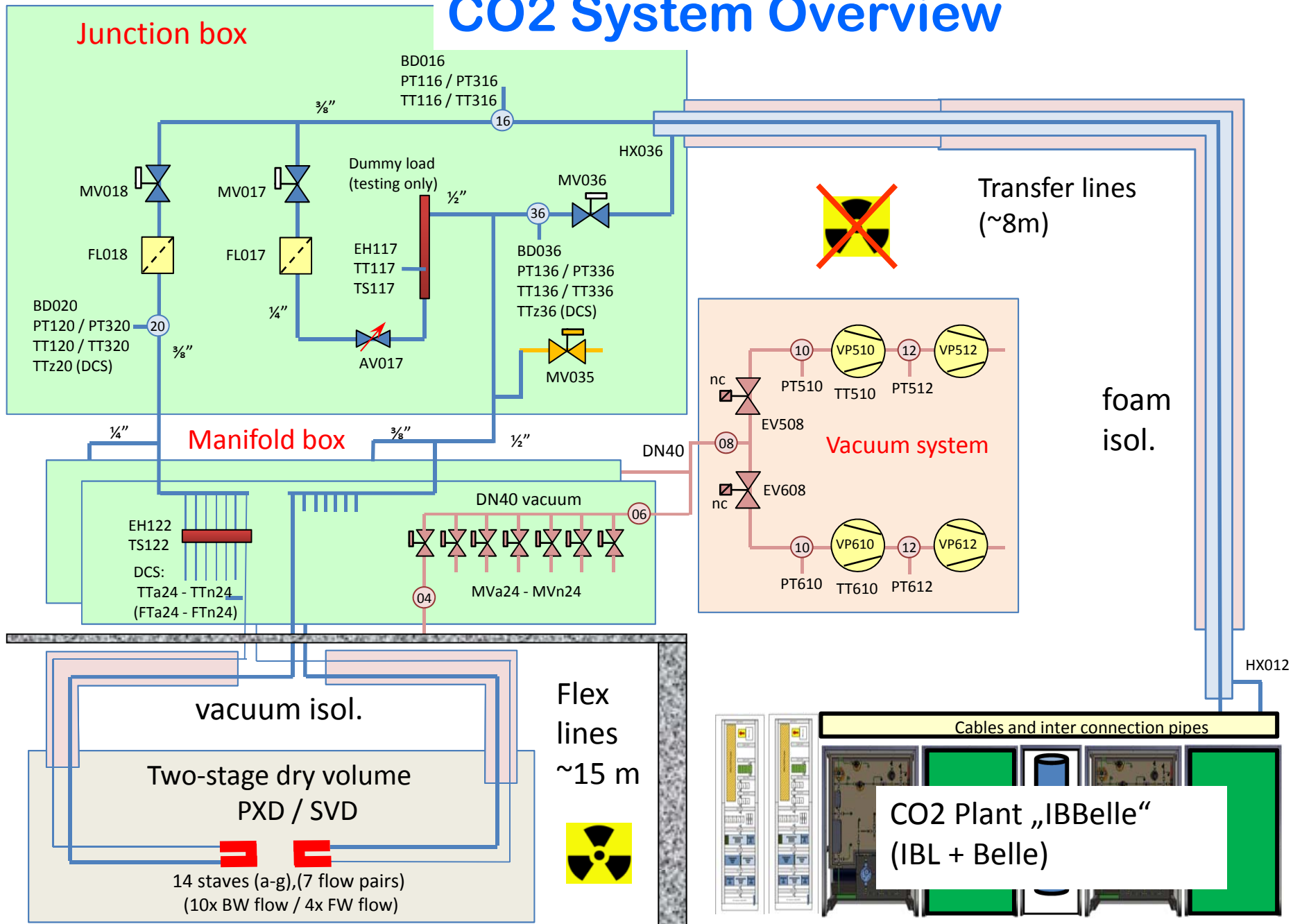


Status of IBelle



- IBelle Overview
- Commissioning at CERN (ATLAS version)
- Ordering of Parts
- Location of IBelle at KEK

CO2 System Overview

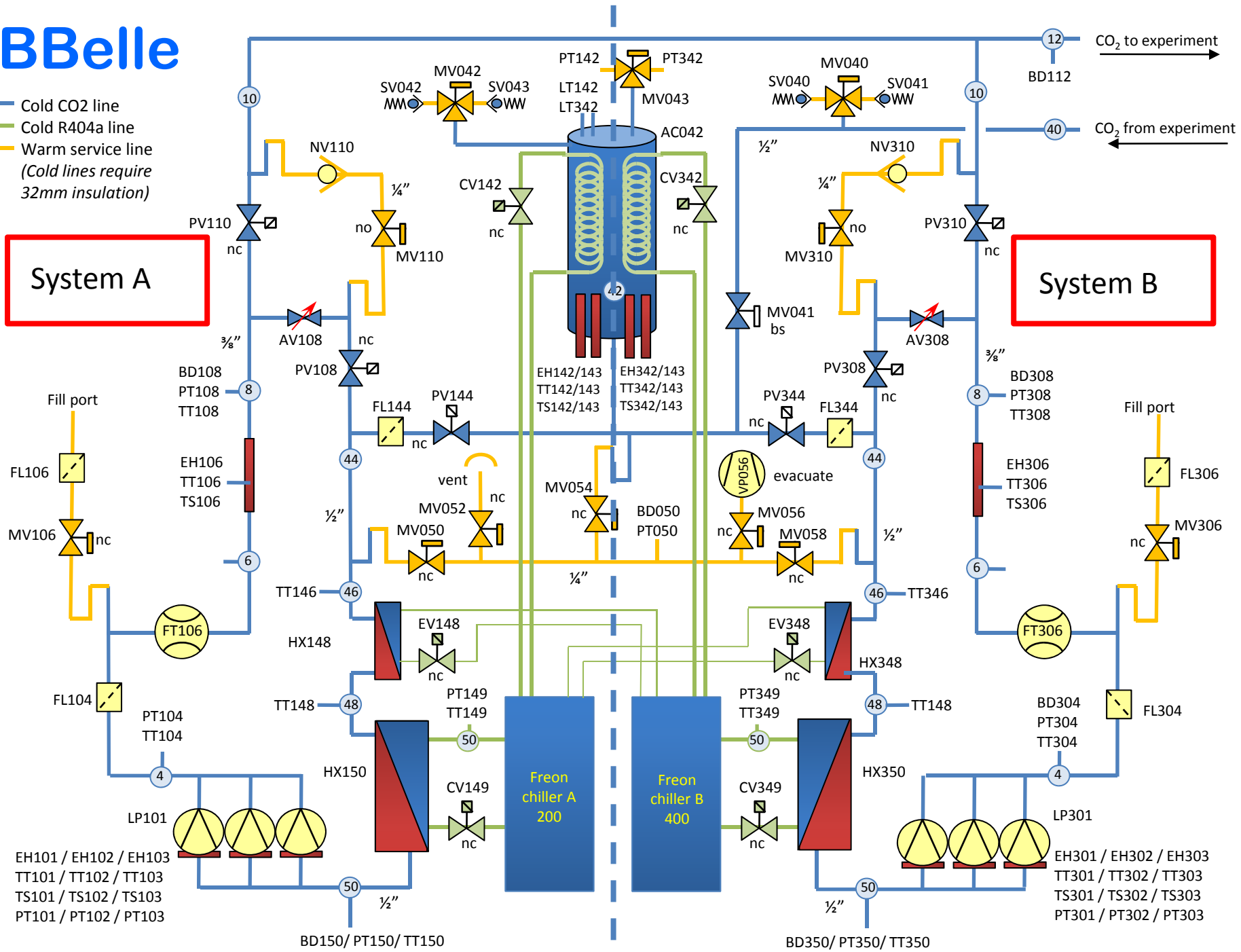


IBBelle

- Cold CO2 line
- Cold R404a line
- Warm service line
(Cold lines require 32mm insulation)

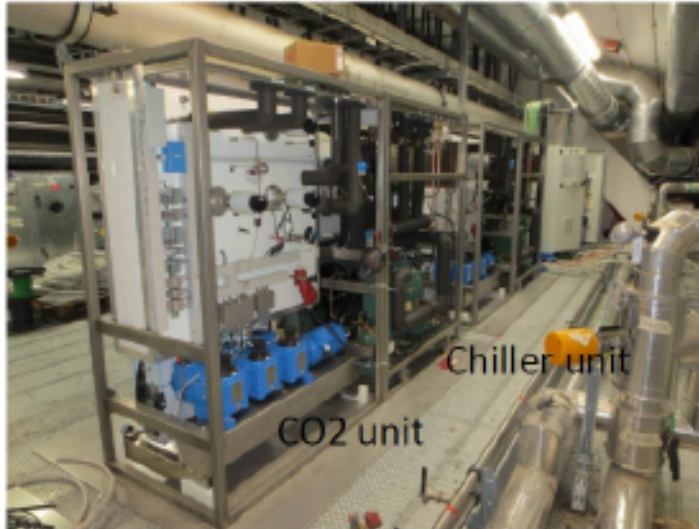
System A

System B



Commissioning of IBBelle at CERN

Installation at CERN (ATLAS Experiment): the “twin” of IBBelle



Accum.
rack



Construction of IBBelle (ATLAS) is finished

Commissioning with dummy heat load is mostly done

Some problems getting down to -40°C (not important for the Belle version)

Now testing all CO2 connections to IBL



Documentation of the CO2 Plant



Production drawings for the **mechanics** exist, part lists as well, **but**

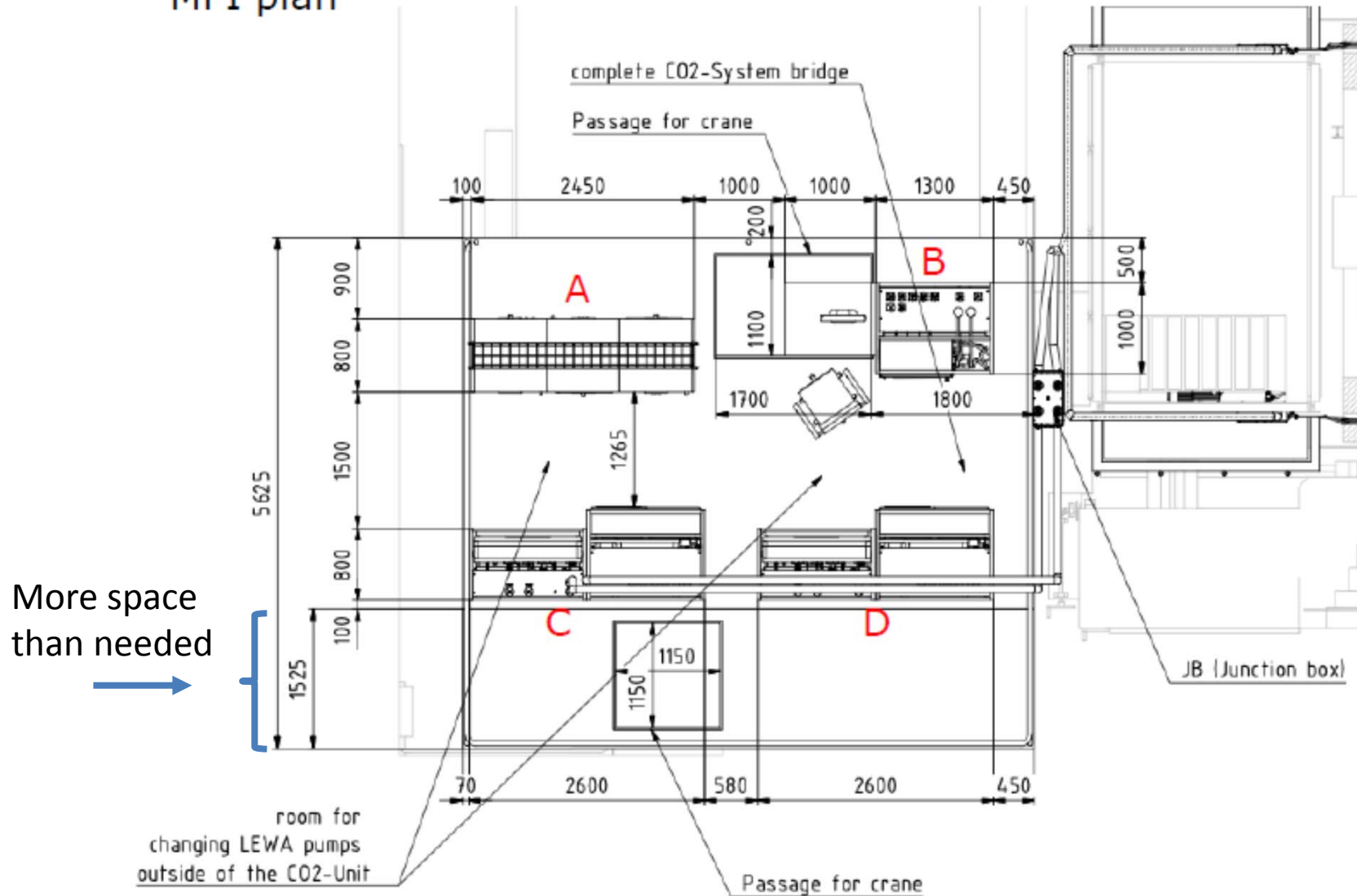
- Need to go through the drawings and tables to establish part list
- person at MPI working on this: Sven Vogt
- Status: Swagelok part list almost done, offers have been asked for waiting for definite quotes

For the **control** side (PCLs etc), things are not too well documented:

- Person at MPI working on this: Reinhard Sedlmeyer already two visits at CERN to establish status in situ
- First parts (24V PS) have been asked for quotes will purchase through CERN

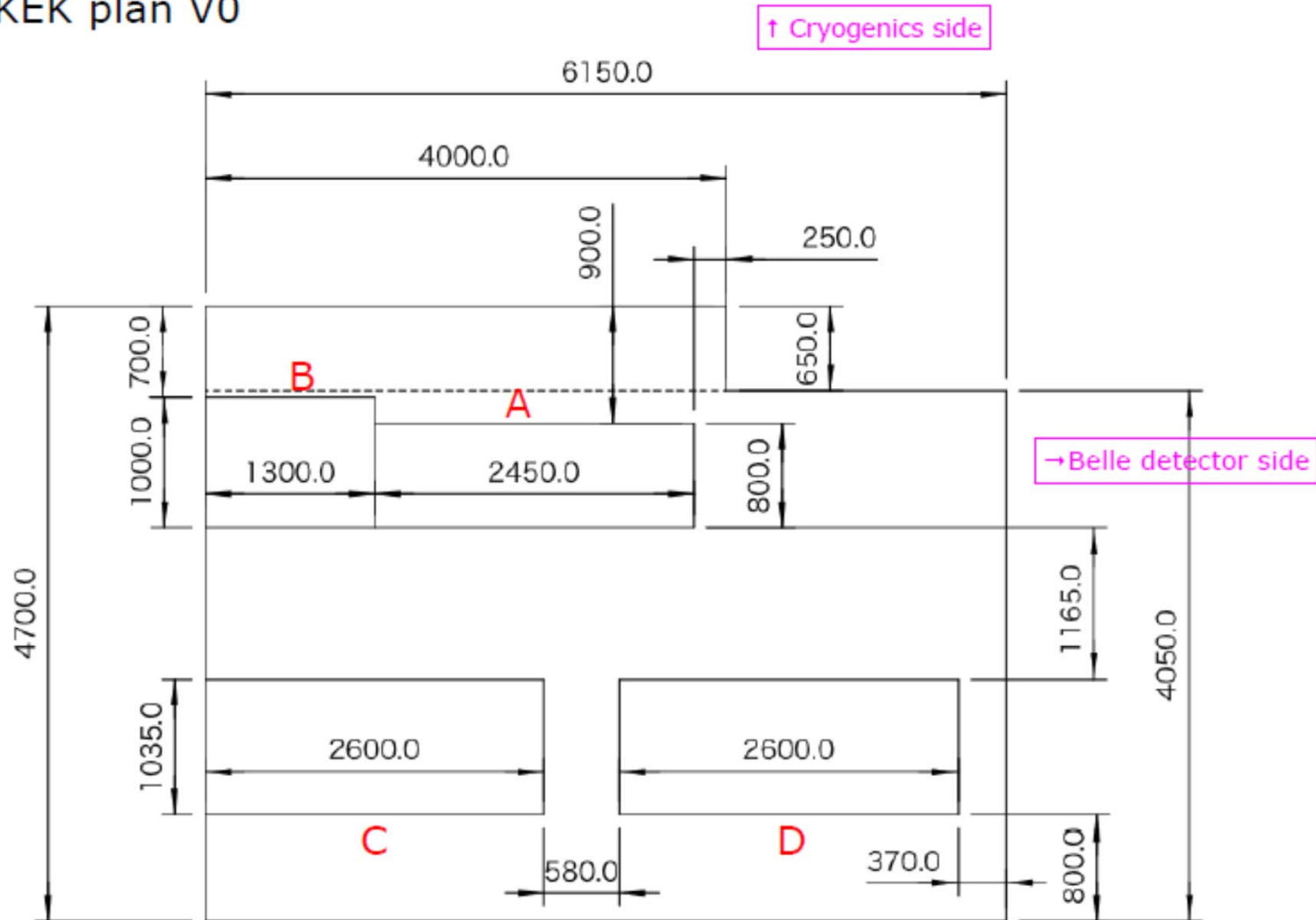
Process of getting quotes and do the ordering will take till the end of year

MPI plan

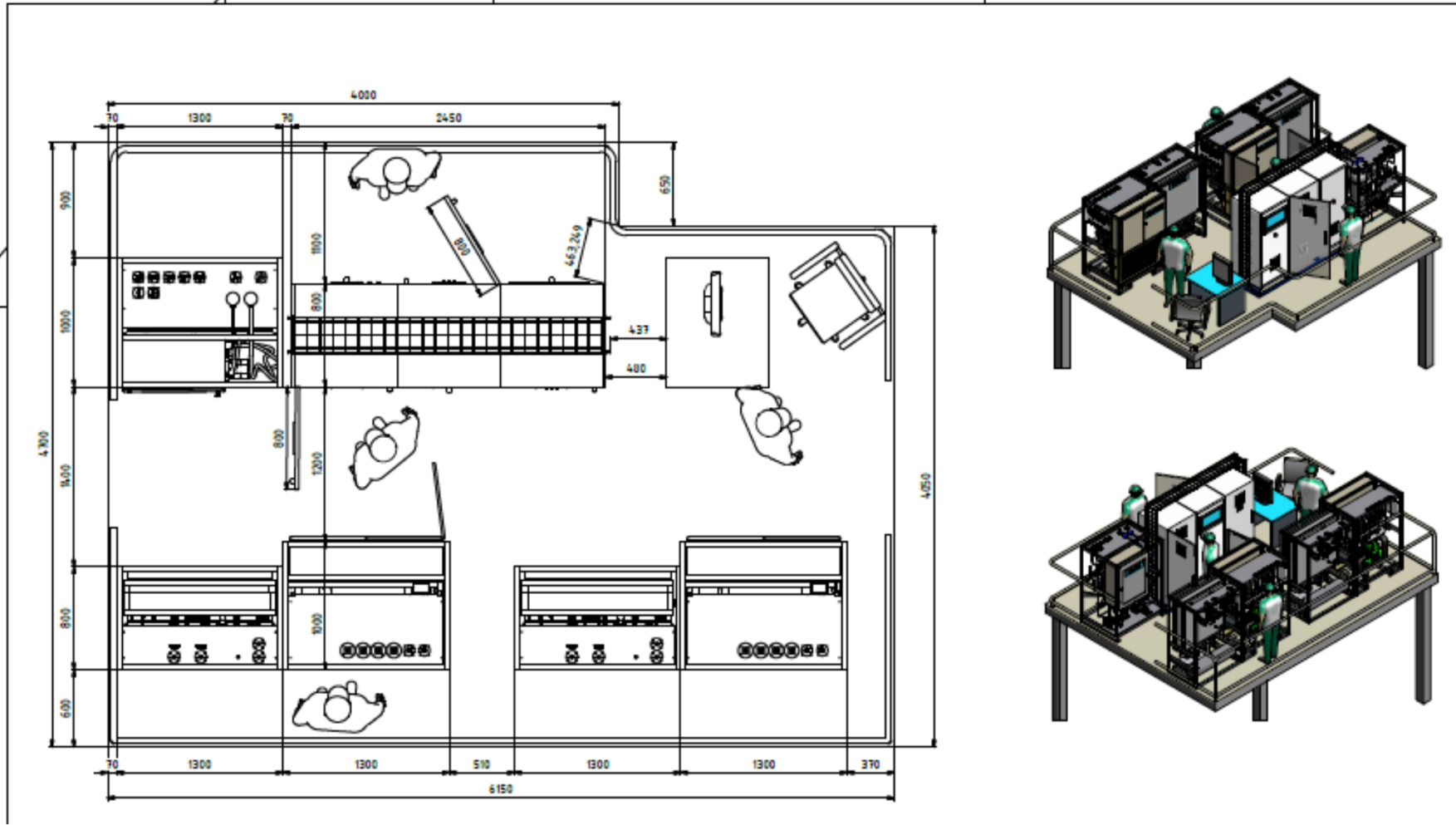


Location of the CO₂ Plant at KEK

KEK plan V0



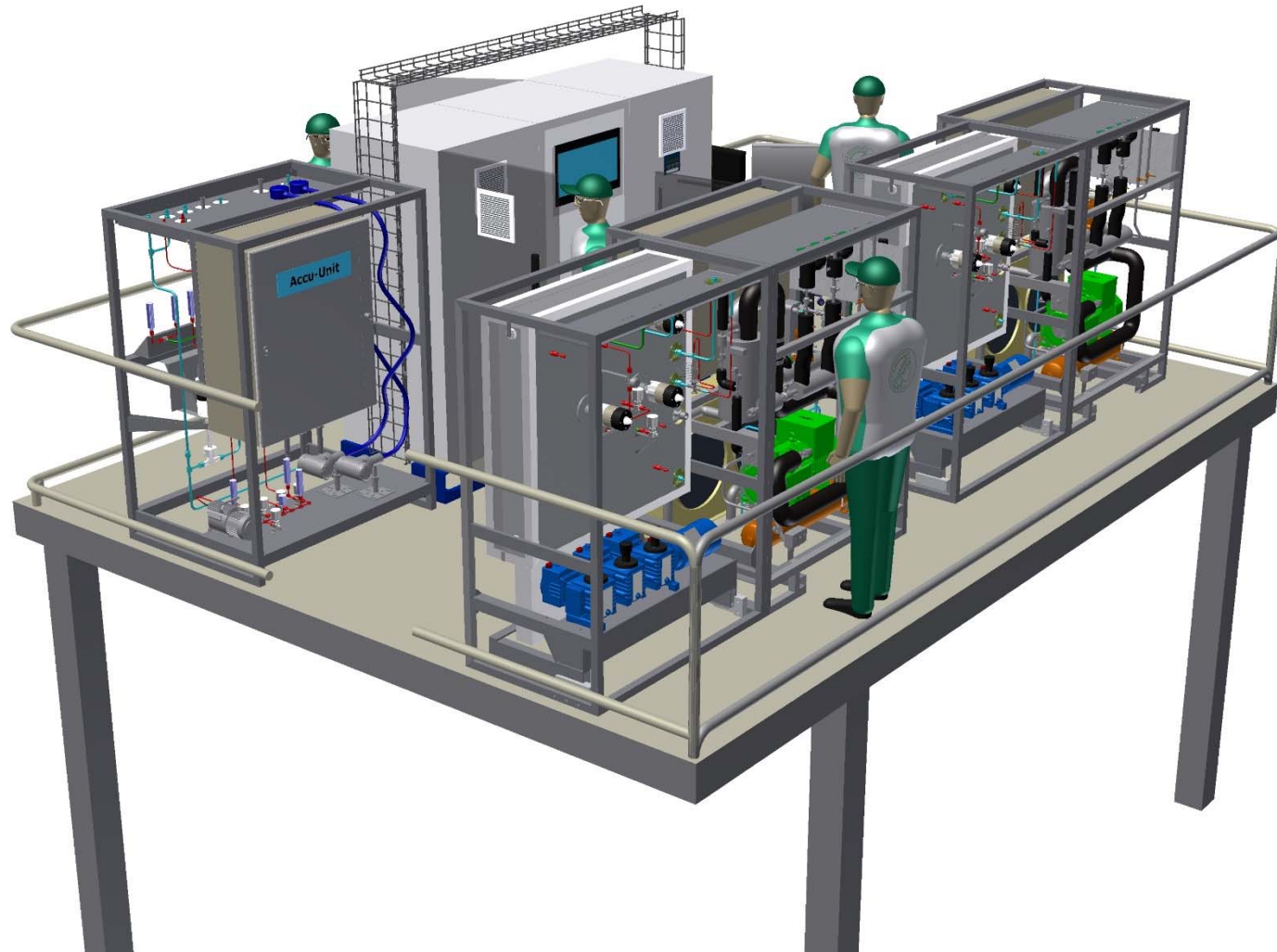
Location of the CO2 Plant at KEK



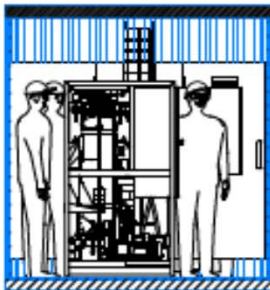
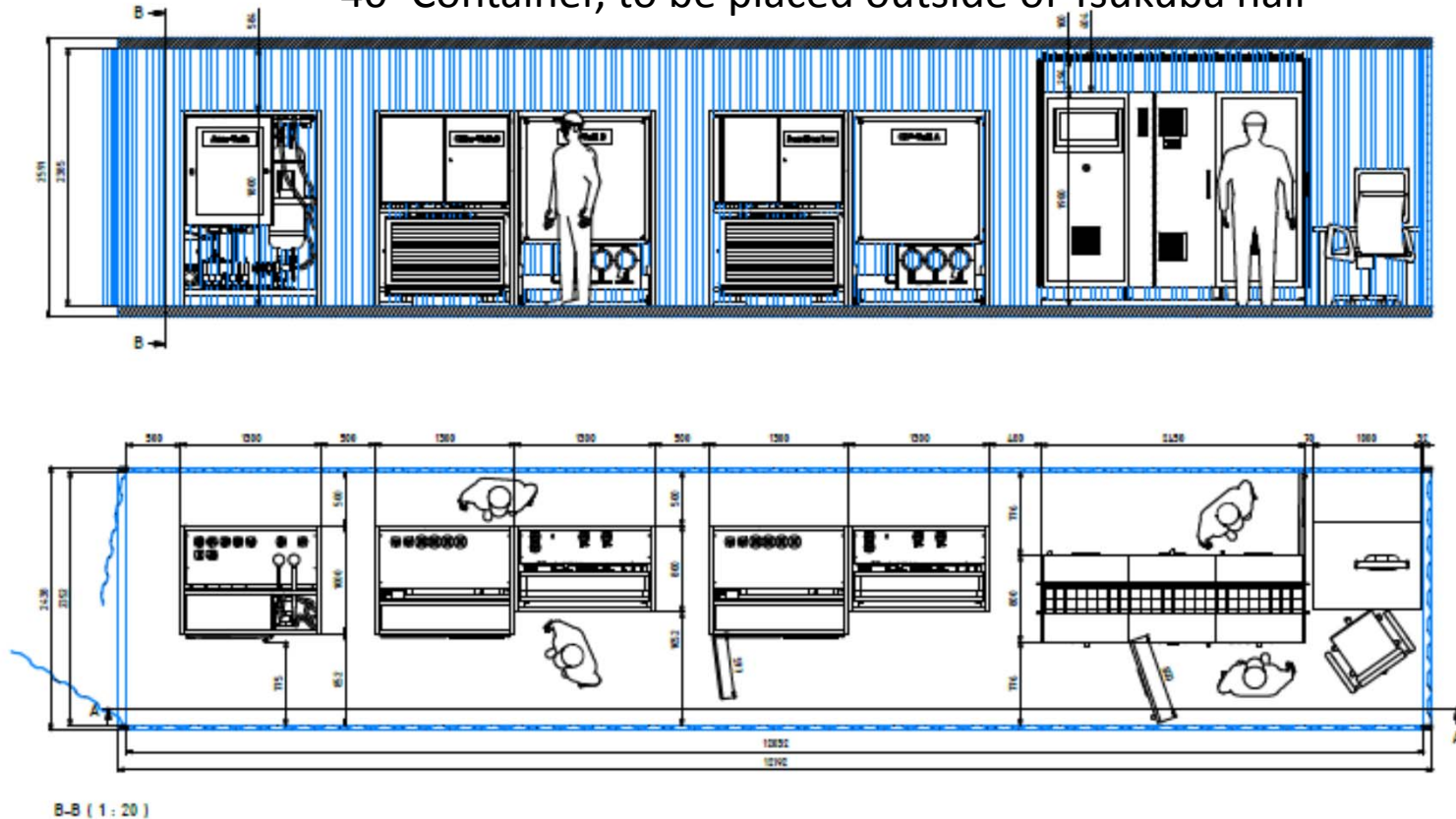
Space tight, but adequate

Potential problem: Access to top of Belle II

Location of the CO₂ Plant at KEK



40' Container, to be placed outside of Tsukuba hall



Advantage: unit can be assembled at MPI, no need to take it apart for transport, no reassembly

Potential problems:
need water/electricity outside hall
Need to air condition the container

Schedule for the CO2 Plant

Schedule for CO2 Cooling System

(modified)

		2nd Q 14	3rd Q 14	4th Q 14	1st Q 15	2nd Q 15	3rd Q 15	4th Q 15	1st Q 16	2nd Q 16
IBBelle	Part list	█	█							
	Tendering Orders		█	█						
	Construction			█	█	█				
	Commissioning						█	█		
	Transport to KEK								█	
	Installation at KEK									█
Junction Box	Design	█								
	Construction		█							
	Test			█						
	Installation				█	█	█			
Manifolds	Design	█								
	Construction		█							
	Test			█						
	Installation				█	█	█			
Transfer lines	Design		█							
	Construction			█	█					
	Test					█				
	Installation						█			
Cold Air / N2	Design				█					
	Construction					█				
	Test						█			
System Integration	at MPI						█	█		
	at KEK									█

IBBelle at KEK
in summer of
2016