

LMU

LUDWIG-
MAXIMILIANS-
UNIVERSITÄT
MÜNCHEN

LMU München - Excellence Cluster Universe

PS & Services

Stefan Rummel

EVO Meeting
16.09.14





- Preproduction, mechanical integration of PS system
- Services:
 - Kapton development
 - Patchpanel, Docks
- Mainproduction

- 8 units are ready and calibrated
→ 24 Channels each, Steering voltages are applied relative to Source
- Adapter boards for EMCM are available
- First set of power cables arrived from EMS, however encountered some quality issues – rework necessary





- First Backplanes available
- Tests are promising

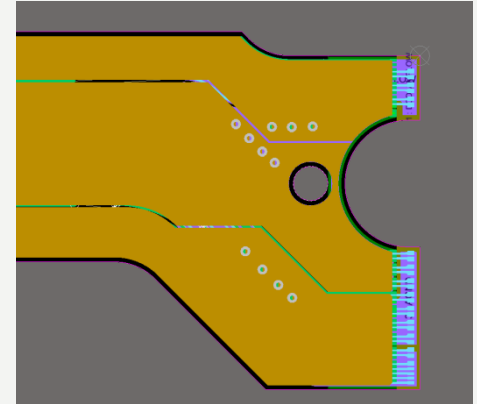


- Recognized issue with PXD9 Bond pattern for various supply voltages (DHP_IO,DHP_CORE)
- Load on singles wires ~500mA

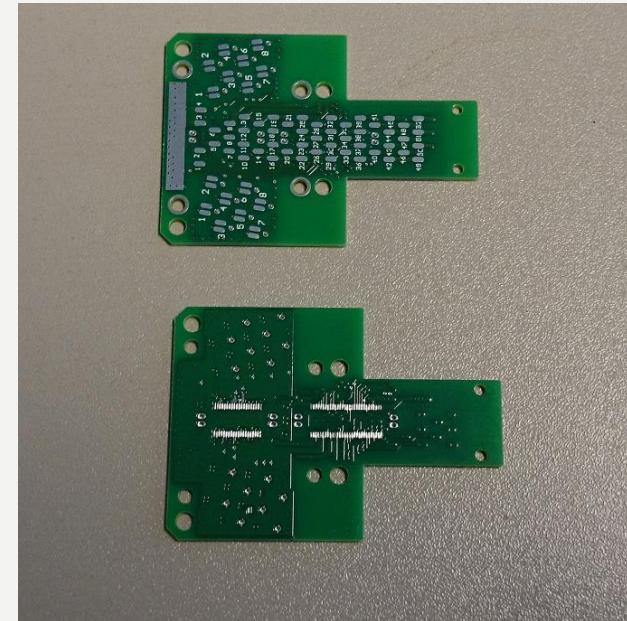
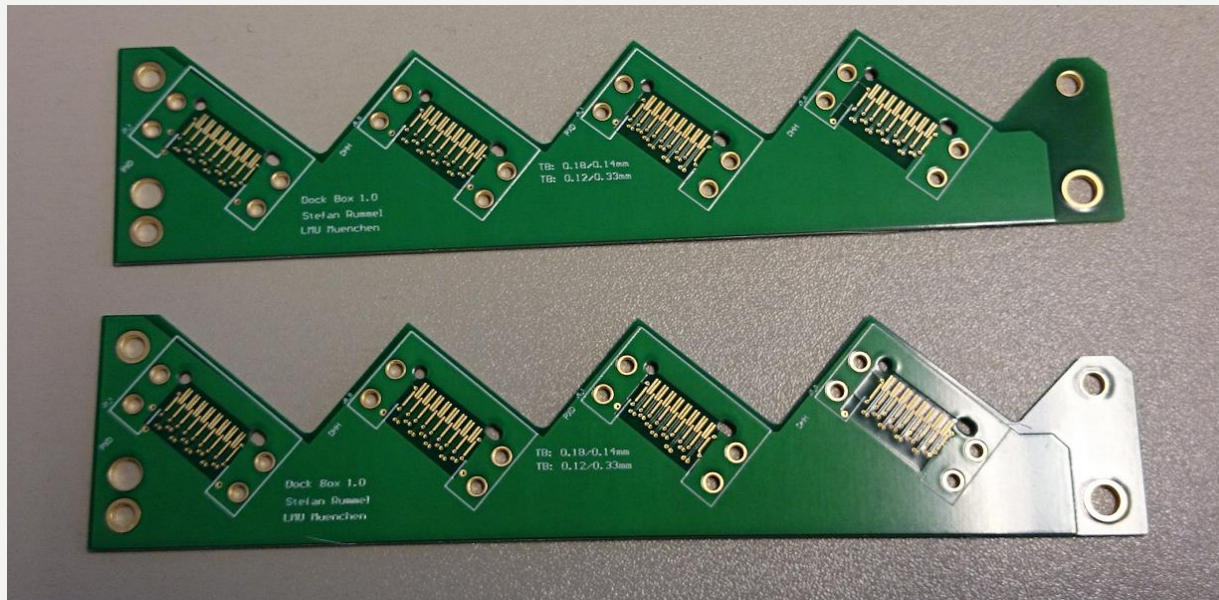
Discussing mitigation strategies:

- Thicker bonding wire 35 μ m instead of 25 μ m
- Change of PXD 9 layout incorporating wider pads
- Some indication that gap close to TML leads to stability issue of link
 - Design can be further improved by removing TML's which became obsolete recently

→ Aiming for production by end October



- Electrical prototypes of Docks and PP's arrived for the signal integrity measurements @ MPI
- Important input for finalizing design of Docks, PP and Data cables and procurement





- Initially 50 units where planned, recently 20 additional units for PF where added
- To keep the schedule ONE batch of 70 units will be produced
- Started to fix some remaining issues:
 - Added possibility to go for 200V on HV
 - More conservative rating of some passives
 -
- Lesson learned from Preproduction - put more time consuming work towards EMS (setting solder jumpers, basic electrical tests individual cards...)
 - Significant speedup of commissioning of units