

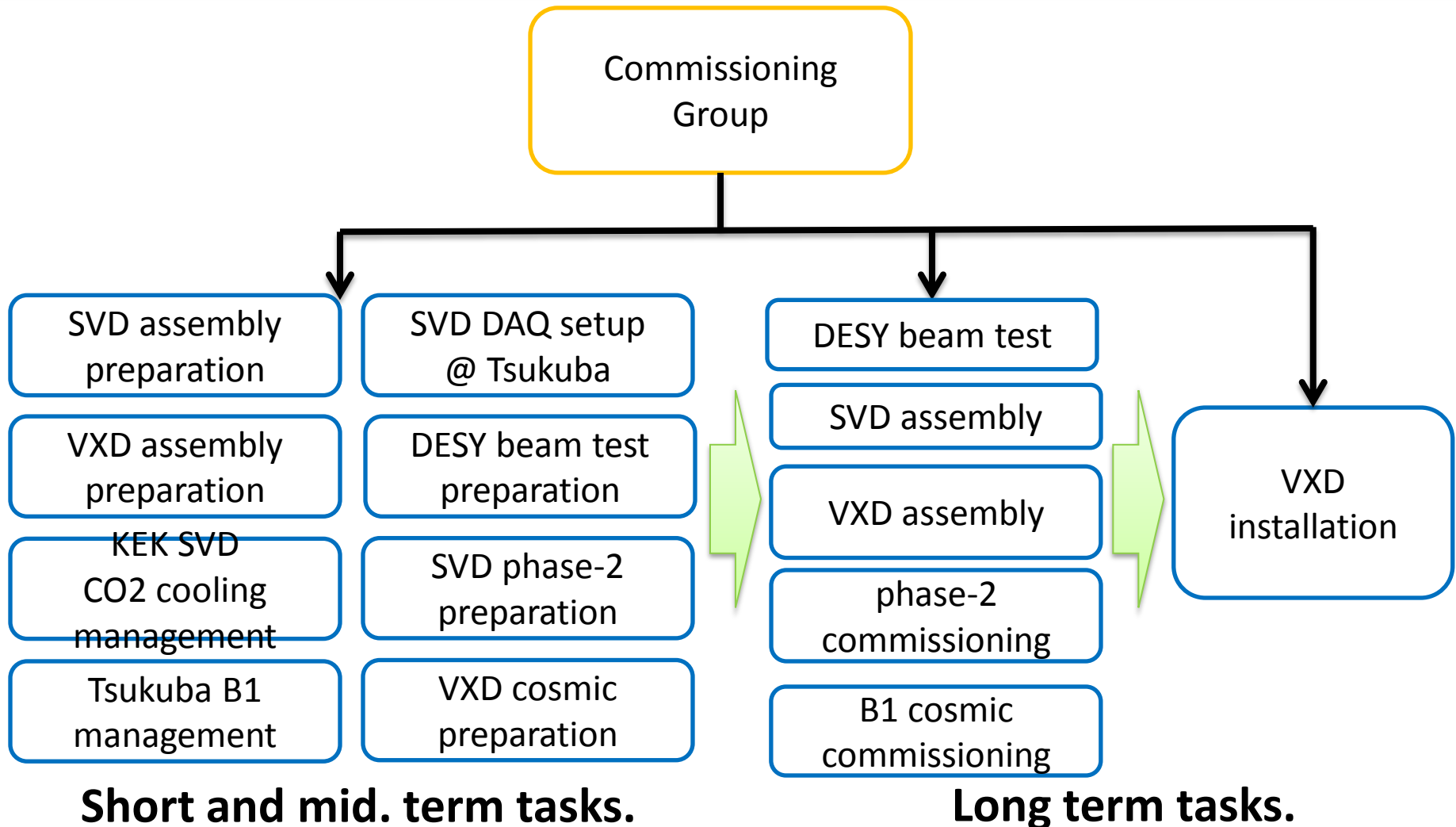
# Commissioning Sub-group Organization, Tasks, and schedule

Katsuro Nakamura

Jan 23, 2015

7<sup>th</sup> VXD workshop

# Work Package



# Tasks on packages (1)

## - short and middle term -

- **SVD assembly: Support structure + Ladder mount**
  - Assembly of endflange, endring, CFRP cone and CFRP outer cover
  - Design and preparation of SVD mount table
  - Details of mount procedures are covered by mechanics group (F. Buchsteiner).
- **VXD assembly preparation**
  - Design and preparation of VXD assembly table.
  - VXD assembly procedure
- **KEK SVD CO2 management**
  - Prepare CO2 system for test on ladder mount at Tsukuba B1.
  - Manage CO2 pipes from IBBelle for commissioning.
  - IBBelle at KEK is managed by S. Tanaka.
- **SVD DAQ preparation at KEK**
  - Setup of FADC system at KEK on both Tsukuba B1 and Belle II
  - SVD DAQ development, including slow control
  - DAQ setup for ladder mount test (use FADC system).
  - Pocket DAQ setup for commissioning

# Tasks on packages (2)

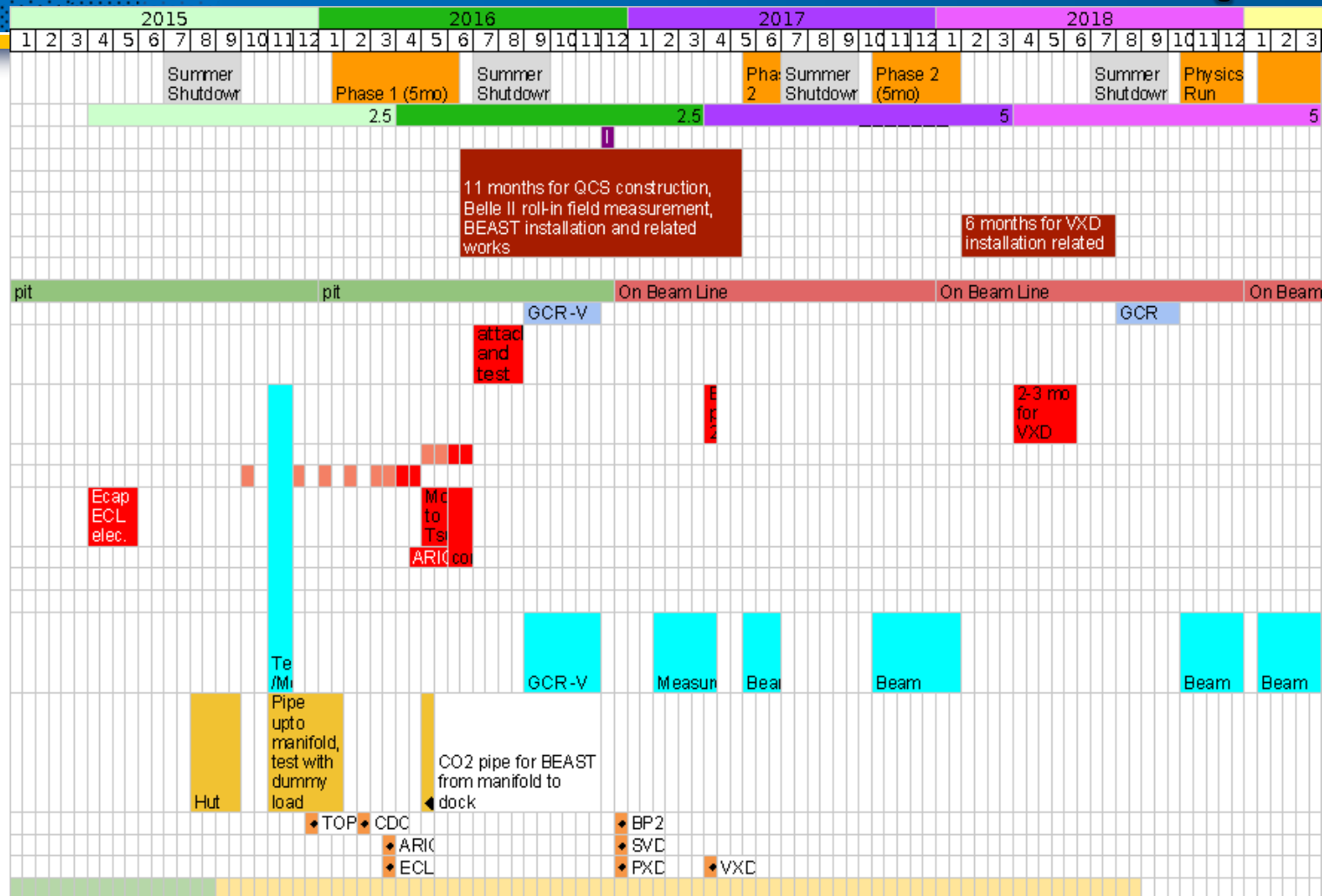
## - short and middle term -

- **Tsukuba B1 management**
  - Space allocation for mount tables, ladder desiccators, working desk.
  - Clean room preparation.
  - Electric requirement.
  - Space sharing and negotiation with PXD group.
- **DESY beam test (2<sup>nd</sup> round) preparation**
  - Current schedule is Feb. 2016.
  - Management of R&D, component preparation, and scheduling.
  - It must be training of phase-2 VXD commissioning
- **SVD phase-2 commissioning preparation**
  - Support structure preparation (SVD cartridge)
  - Service space management
  - CO2 cooling pipe preparation
  - Target and strategy for commissioning
  - Communication with PXD and other monitor sensors for phase-2
- **SVD cosmic commissioning preparation**
  - Routing of cables and pipes.

# Manpower and communication

| tasks                                 | contact person<br>(deputy)                        | adviser      | related persons  | communication<br>w/ outer group |
|---------------------------------------|---|--------------|--|---------------------------------|
| SVD assembly preparation              | T. Tsuboyama                                      | T. Kohriki   | F. Buchsteiner (mechanics),<br>F. Bosi, N. Sato  | PXD                             |
| VXD assembly preparation              | S. Tanaka   | T. Kohriki   | T. Tsuboyama (SVD assembly),   | PXD                             |
| KEK SVD CO2 management                | T. Tsuboyama                                      | S. Tanaka    | F. Buchsteiner (mechanics)   | PXD, IBBelle                    |
| SVD DAQ preparation                   | K. Nakamura                                       | M. Friedl    | M. Friedl (electronics),<br>R. Thalmeier, H. Yin, S. Bacher                            | DAQ, DATCON                     |
| Tsukuba B1 management                 | K. Nakamura                                       | T. Tsuboyama | F. Buchsteiner (mechanics),<br>T. Tsuboyama (SVD assembly),<br>M. Friedl (electronics) | PXD, KEK facility               |
| DESY beam test preparation            | C. Irmeler  |              | L. Vitale (monitor),<br>M. Friedl (electronics)<br>K. Nakamura                         | PXD, DAQ                        |
| SVD phase-2 commissioning preparation | K. Nakamura<br>(communication with machine group) | S. Tanaka    | L. Vitale (monitor),<br>F. Buchsteiner (mechanics),<br>M. Friedl (electronics)         | PXD, DAQ, IBBelle               |
| VXD cosmic commissioning preparation  | K. Nakamura                                       | T. Tsuboyama | M. Friedl (electronics)<br>and many others   | PXD, DAQ, IBBelle               |

# Detector Construction Schedule (tbc)



Difficult to interpret what Yamauchi-san's brief notice means, but assume phase 1 starts as "early" as Jan. 2016 (=conceivable budget scenario)

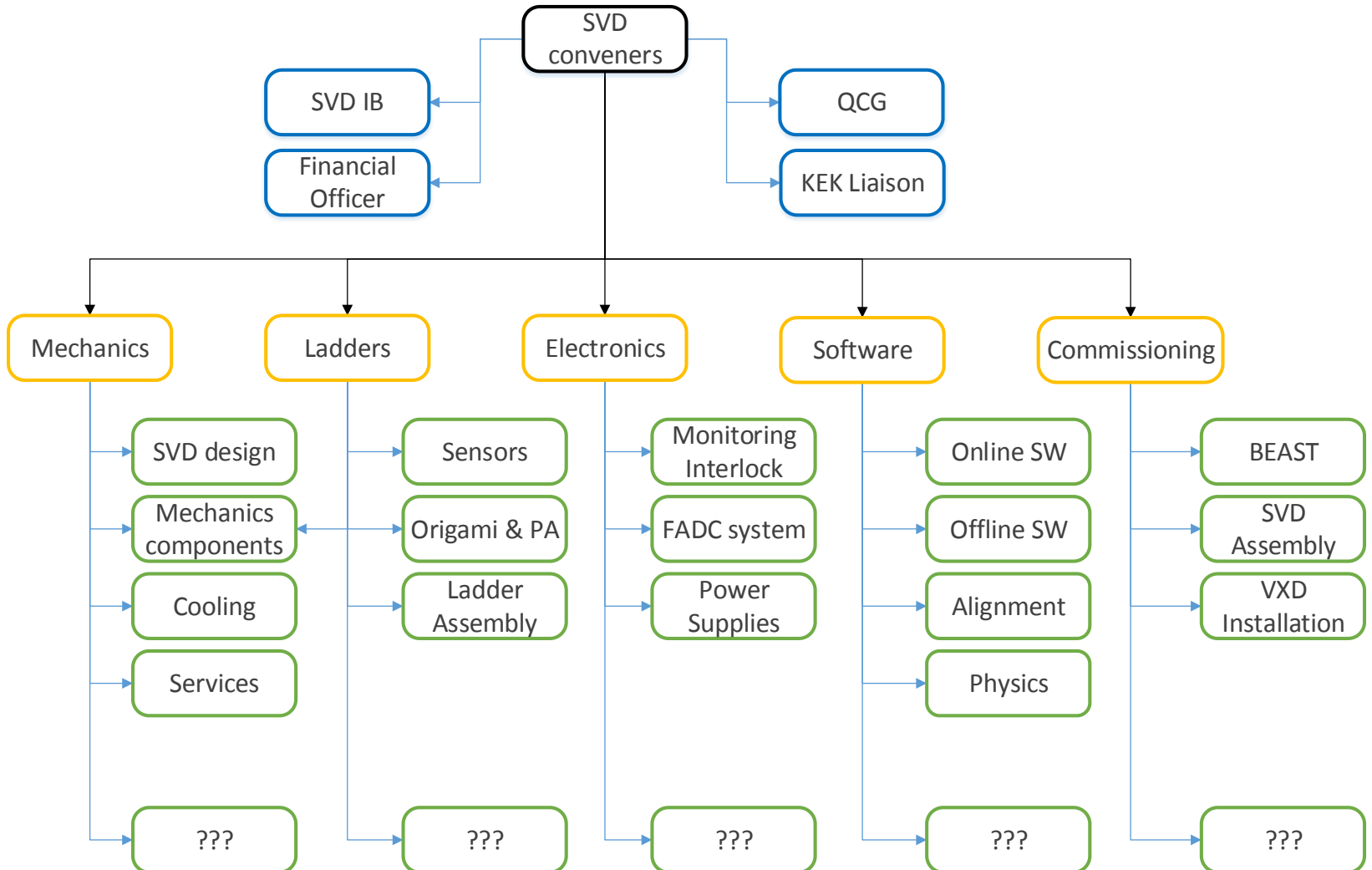
# Packages for long term tasks

- **SVD ladder mount**
  - will start from ~ middle of 2016
- **Phase-2 SVD commissioning (BEAST II)**
  - May. 2017 – Jan. 2018
- **VXD assembly + VXD cosmic commissioning**
  - almost in parallel to phase-2 commissioning
- **VXD installation**
  - Feb. 2018 – July. 2018
  
- **There are a lot of tasks and activities on these commissioning, and of course I alone cannot cover all the topics.**
- **However, since most of ladder assembly works will be finished at this moment, we can re-arrange, distribute and fit manpower properly.**
- **The important task for the commissioning group is to prepare necessary items and finish necessary development beforehand.**

**backup**



# Tasks of Sub-Groups



# Relations to Other Belle II Groups

