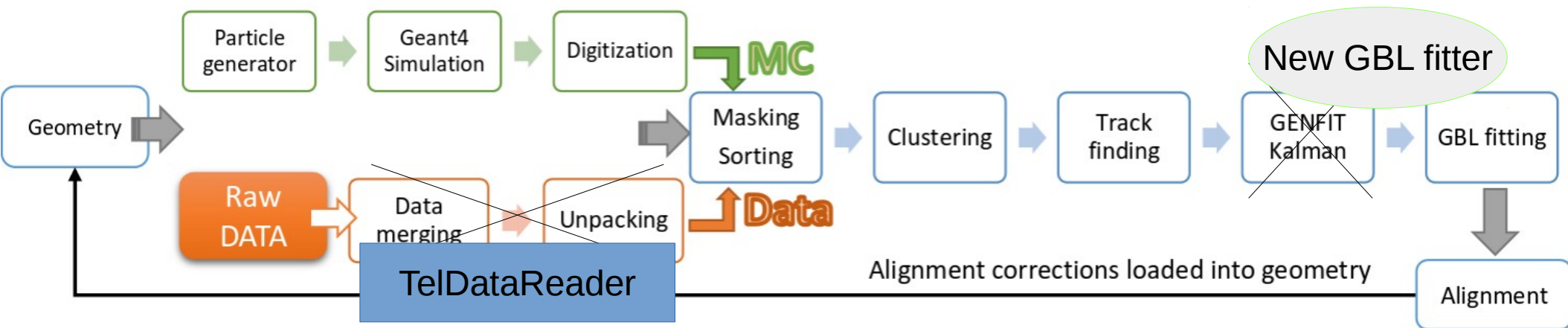


# Test beam analysis in BASF2

Tadeáš Bilka  
Charles University in Prague

# Basf2 Data Flow

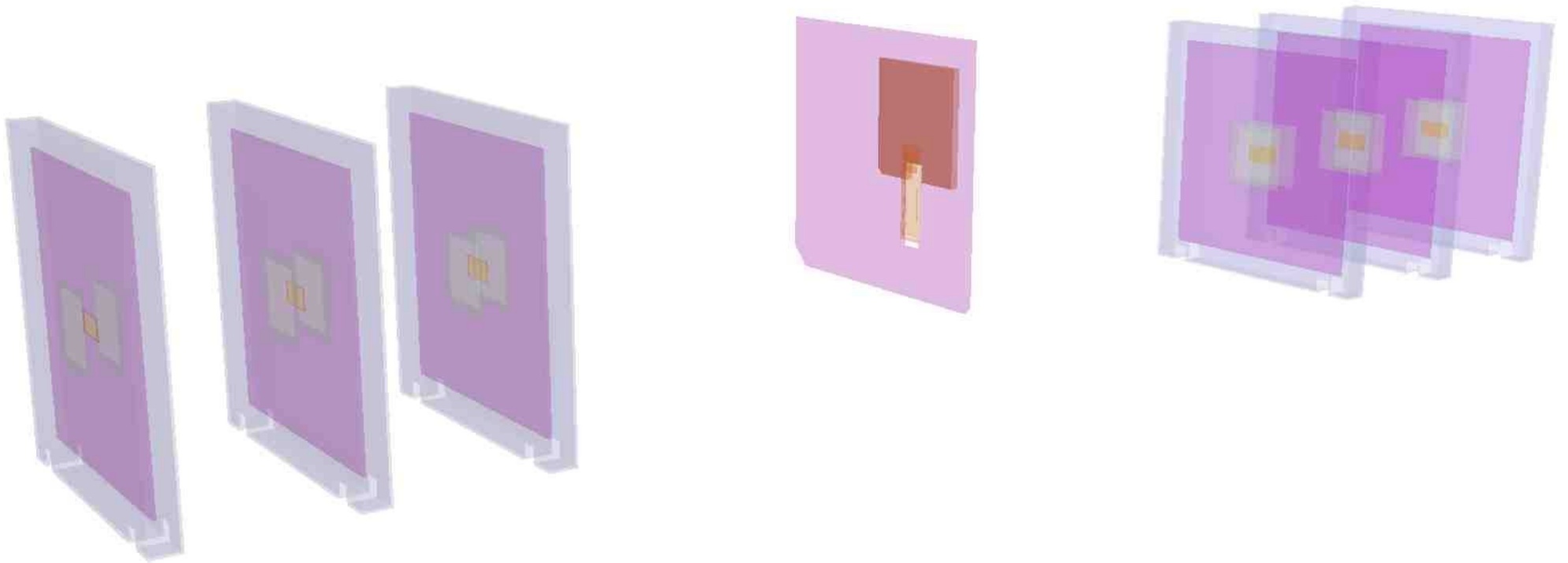
- Basf2 ready for EUDET telescope since DESY beam test
- TelDataReader module accepts raw telescope event data + PXD
- EUDET in basf2: simulation/digitization/clustering



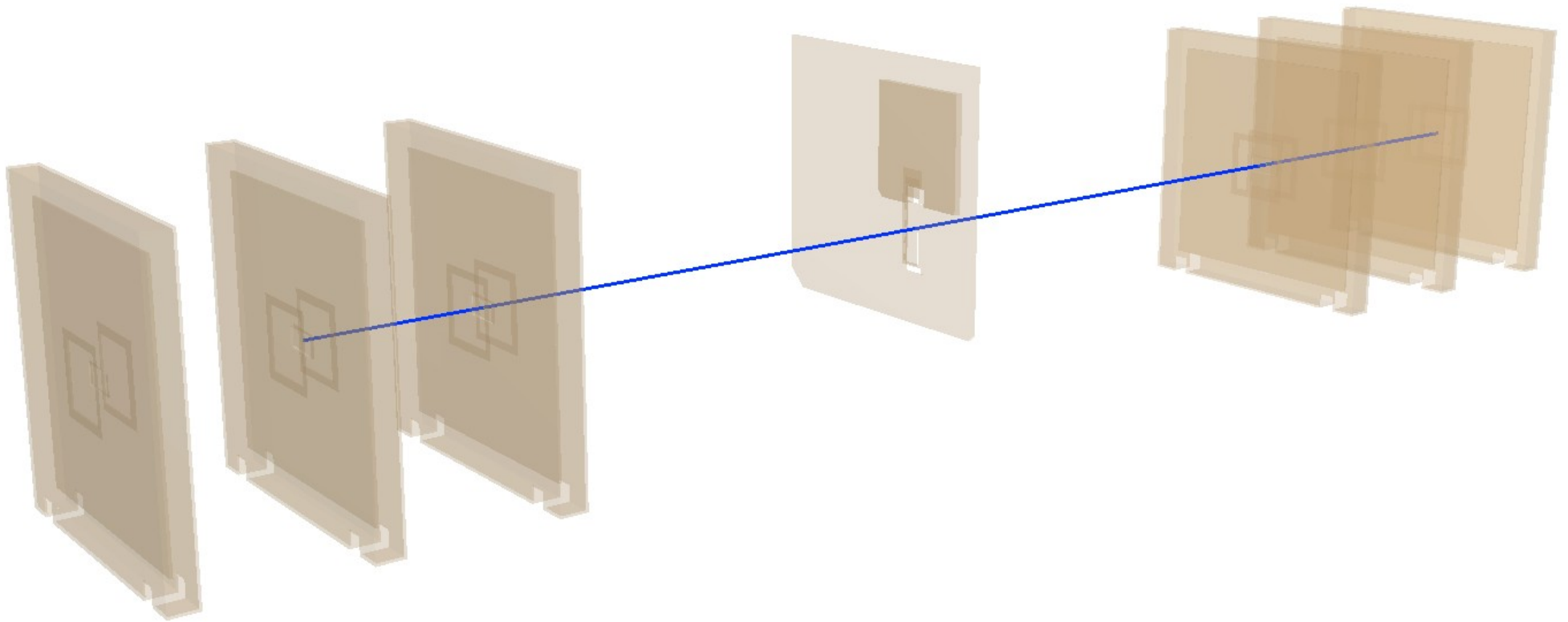
- Jakob's track finder: PXD + TEL ... special sector maps (to go to basf2)

# Basf2 geometry...

- defined in XML files



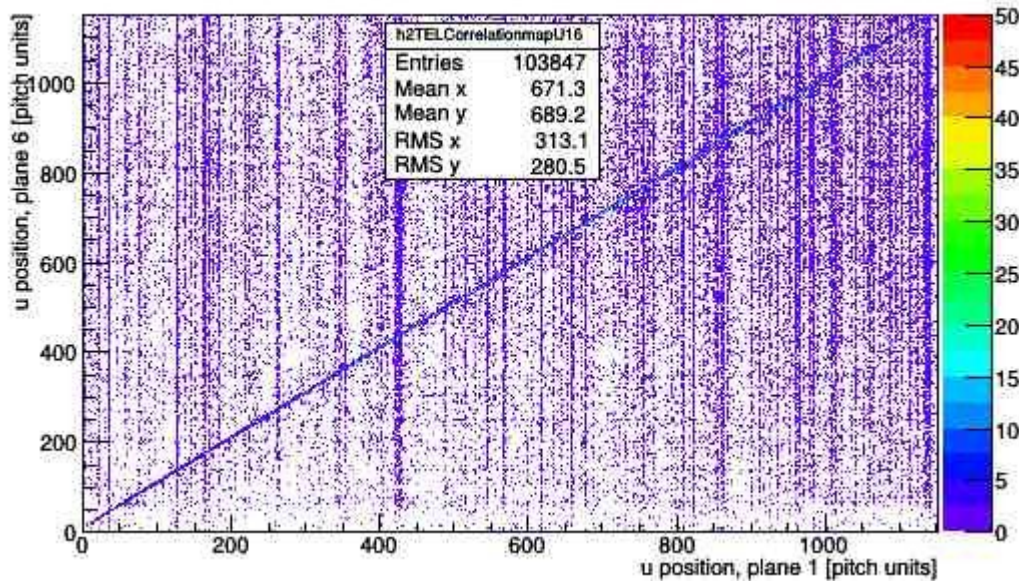
... with a full track



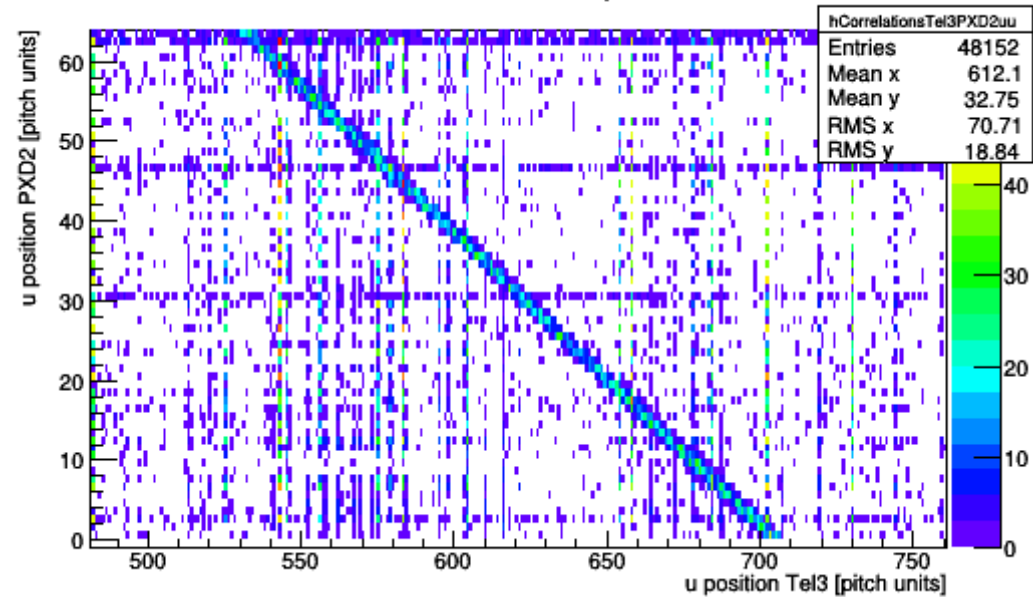
# Basf2 DQMs

- Telescope | PXD correlations (hitmaps, etc.)

Correlationmap TEL in U, plane 1, plane 6



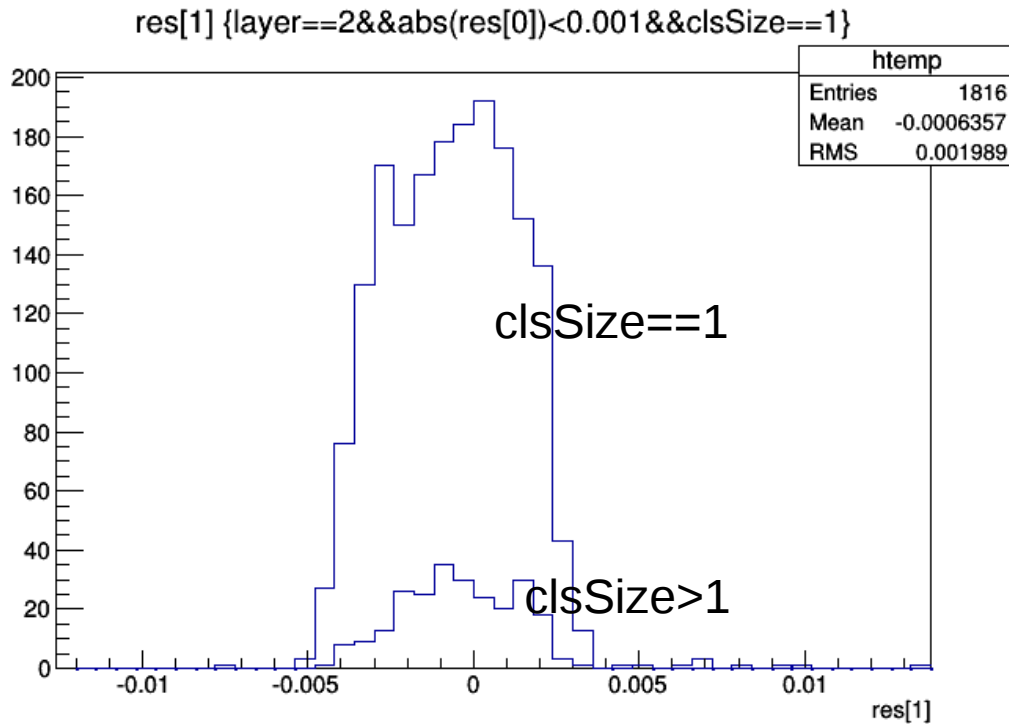
Correlation Tel3 PXD2, axis u u



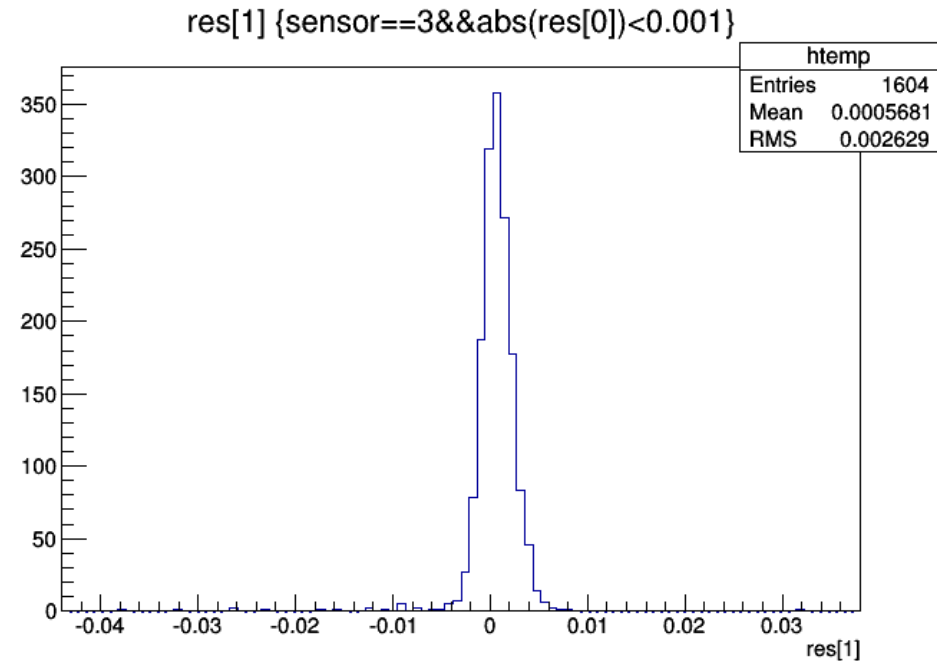
# Alignment

- Fit with GBL & alignment with Millepede

DEPFET residuals V



Telescope 3 residuals V



# Summary | Issues | Outlook

- Basf2 compatible with EUTEL/DEPFET beam test
- Problems with track finder and yield of PXD hits
- Still imperfect masking
- Alignment on full setup with DEPFET needs lots of events
- 
- Update of VXD track finder => hope for much more PXD tracks