

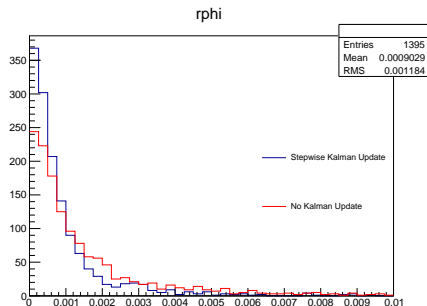
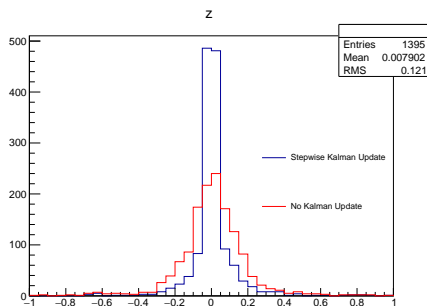
VXD Hit Recovery for Belle 2

Ian J. Watson

University of Tokyo

B2 Tracking Meeting
June 12, 2015

Stepwise Update



- Thinking about generalizing the extrapolator to a CKF
- Looking through genfit found `fitter->processTrackPartially(track, track->getCardinalRep(), 1, 0)`
 - If I understand, adding hits at the front to a pre-fitted track then running this will do a Kalman update step, update the track parameters
- Showing the Δz and $\Delta\phi$ distributions for **with** and **without** doing the kalman update after adding each hit
 - Seems to be giving sensible results (just testing on K_S particle gun)