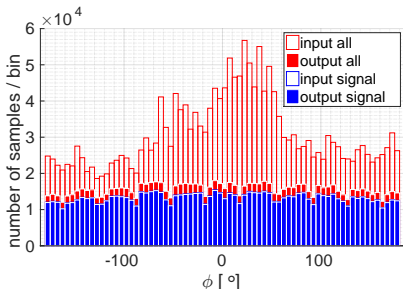
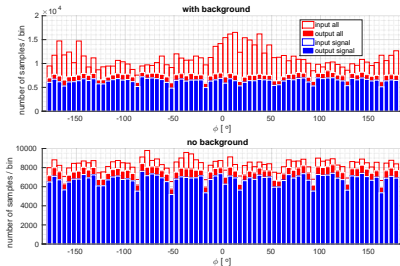


# Distribution of samples in $\phi$



EvtGen with background

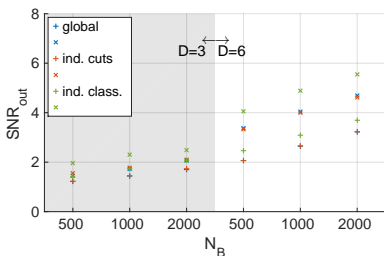


Particle Gun with and without background

⇒ Non-flat distribution NOT due to mistuned filters in SectorMap



## Global vs. sensor specific ML filter(s)



'+' - original input, 'x' -  
decorrelated input

⇒ Sector specific ML classifiers perform better. However, need to find a clever training strategy

- split whole set into 3 sets (depending on the layer configuration of the samples)
- trained one global and 3 sensor specific (one per set) classifiers
- determination of cuts:
  - global: overall  $r = 0.99$
  - ind. cuts:  $r = 0.99$  in every subset

