

VXD Test Beam

C. Marinas^a, K. Nakamura^b

^aUniversity of Bonn

^bKEK

VXD Consortium

DESY TB Schedule 2016

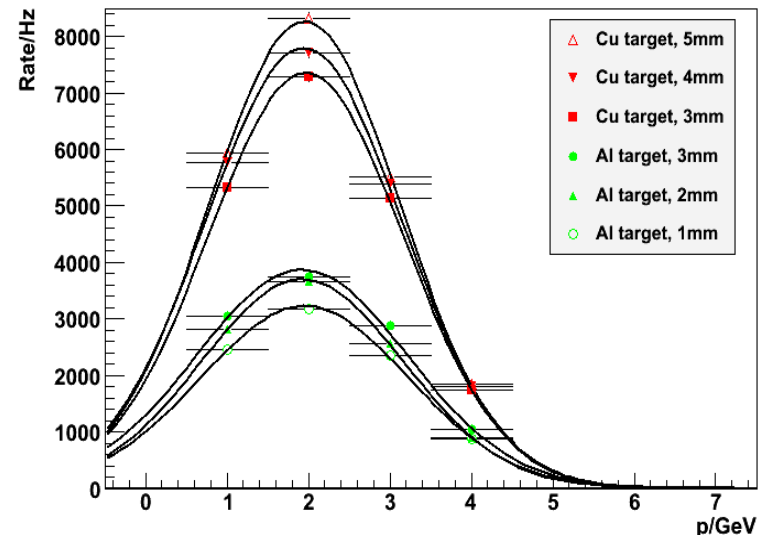
Week		TB21		TB22		TB24/1		TB24	
		DATURA	none	DURANTA	none	Telescope in PCMAG	PCMAG	none	
4-Jan-16	1	Shutdown							
11-Jan-16	2								
18-Jan-16	3								
25-Jan-16	4								
1-Feb-16	5								
8-Feb-16	6								
15-Feb-16	7								
22-Feb-16	8								
29-Feb-16	9								
7-Mar-16	10	Startup		Startup		Startup		Startup	
14-Mar-16	11	CMS-Pixel-Phase1		Mu3e					
21-Mar-16	12	Goettingen-CMOS		ATLAS-Pixel-AMSH35					
28-Mar-16	13	ATLAS-Pixel-MPP							
4-Apr-16	14	CMS-Pixel-Phase1				Installation Belle-II			
11-Apr-16	15	PLUME							
18-Apr-16	16	PLUME							
25-Apr-16	17	ATLAS-Pixel-AMSH35							
2-May-16	18	CMS-Pixel-P11-KA			CALICE-AHCAL			SiPM	
9-May-16	19	CMS-Pixel-P11-KA						SiPM	
16-May-16	20								
23-May-16	21	ATLAS-Strip-Glue		ATLAS-ITK-Strip			LCTPC-FLC		
30-May-16	22	ATLAS-Strip-Glue		ATLAS-ITK-Strip			LCTPC-FLC		
6-Jun-16	23							CMS-Pixel-Phase1	
13-Jun-16	24								
20-Jun-16	25				CALICE-AHCAL				
27-Jun-16	26								
4-Jul-16	27								
11-Jul-16	28								
18-Jul-16	29								

TB24 and TB24/1
CW 14 – CW 17

DESY TB

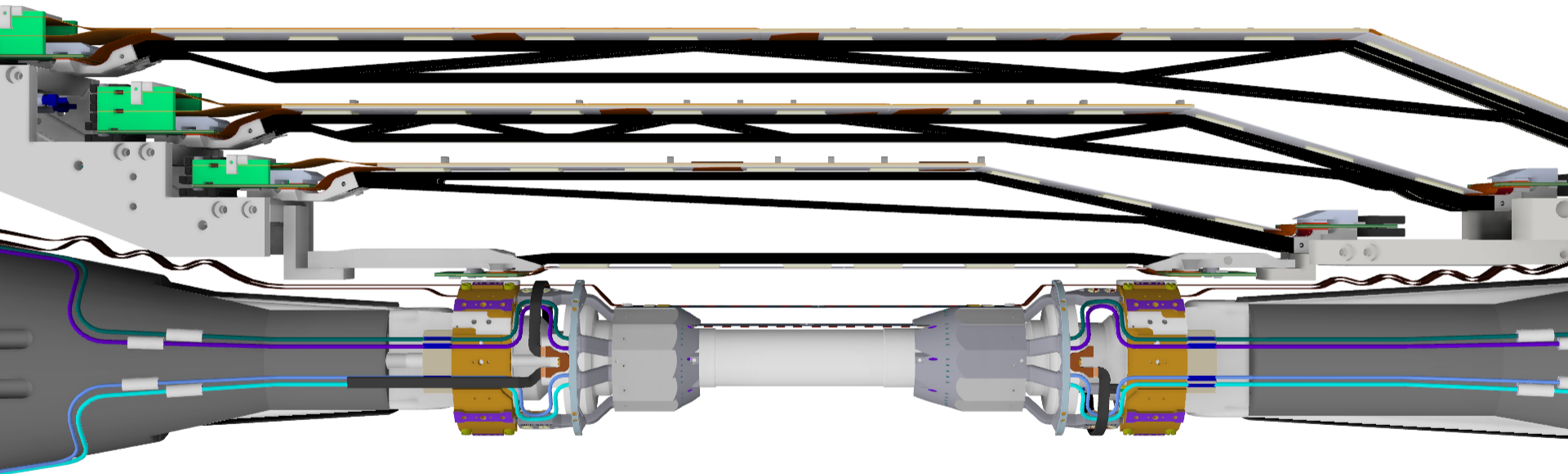
- VXD common test beam in April 2016 (4 weeks)
- Small sector of the final sensors and ASICs*
2 PXD + 4 SVD ladders
- Complete VXD readout chain: HLT, monitoring, event building, PocketDAQ
- CO₂ cooling, slow control, environmental sensors
- Illumination with (up to) 6 GeV e⁻ under solenoid magnetic field (PCMAG)
- Alignment, tracking algorithms, ROI

■ **Goal: System integration and Phase 2 Commissioning**

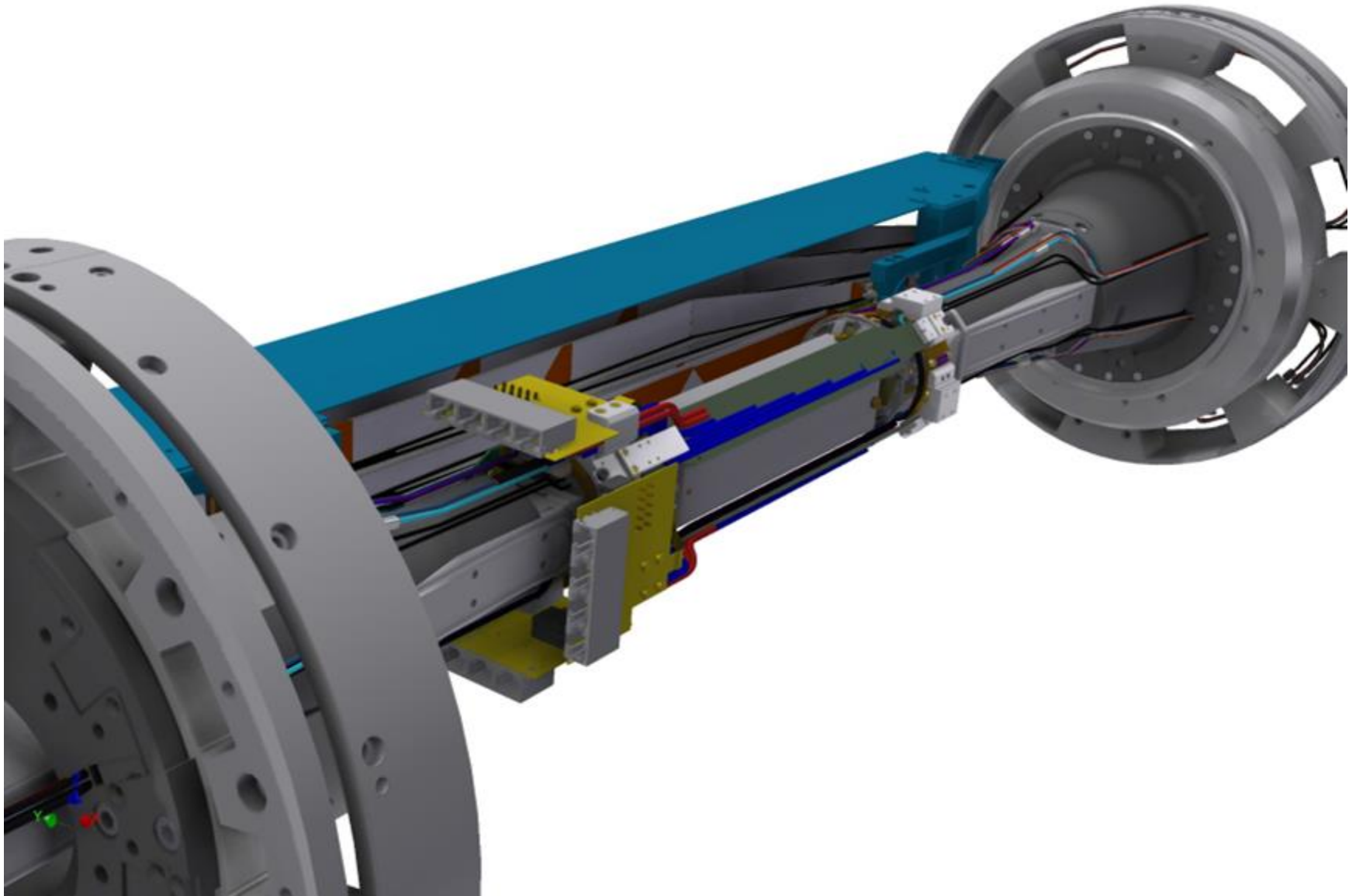


VXD Phase 2 Hardware

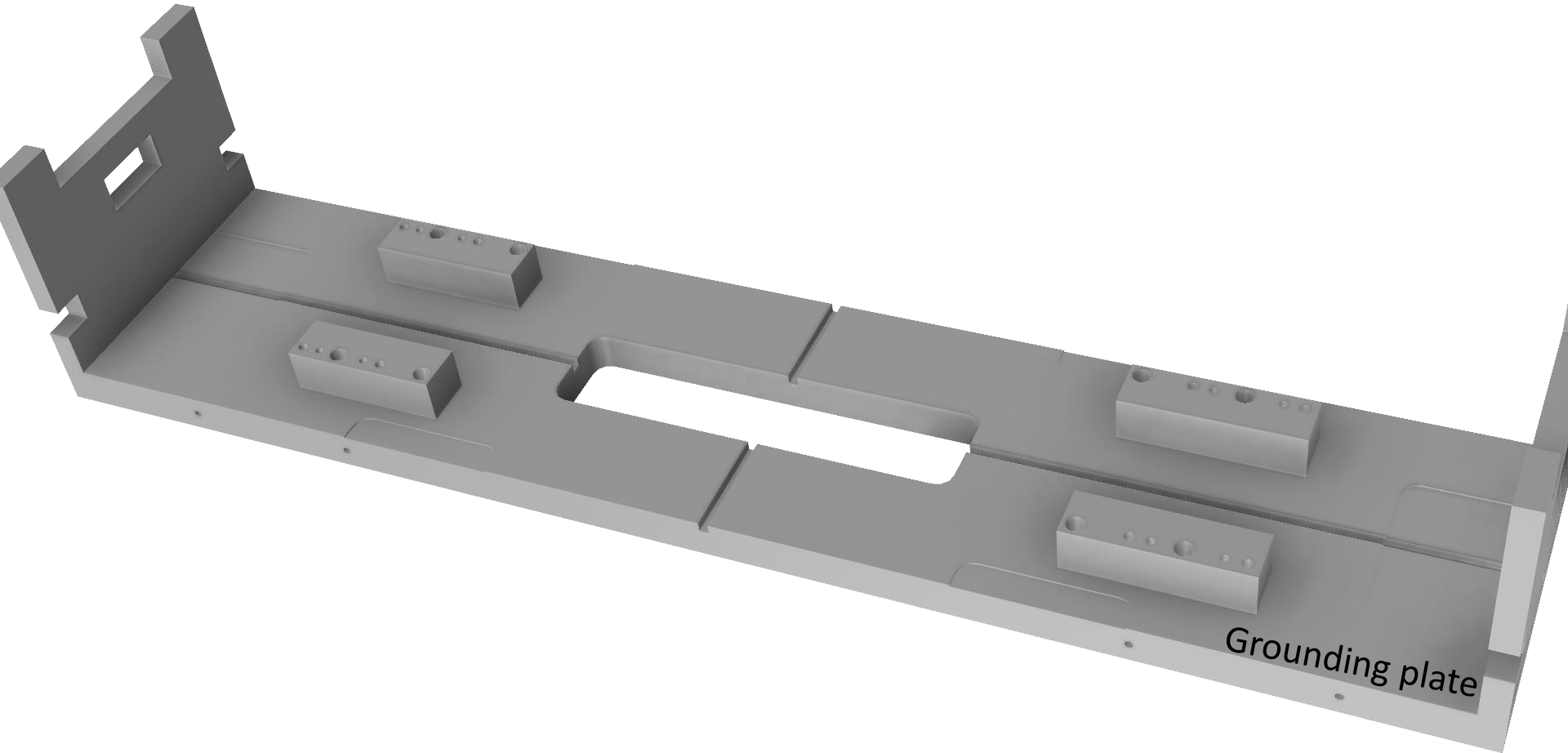
- Two PXD and four SVD layers
- +X direction, horizontal plane (highest background sensitivity)



VXD Detector Systems

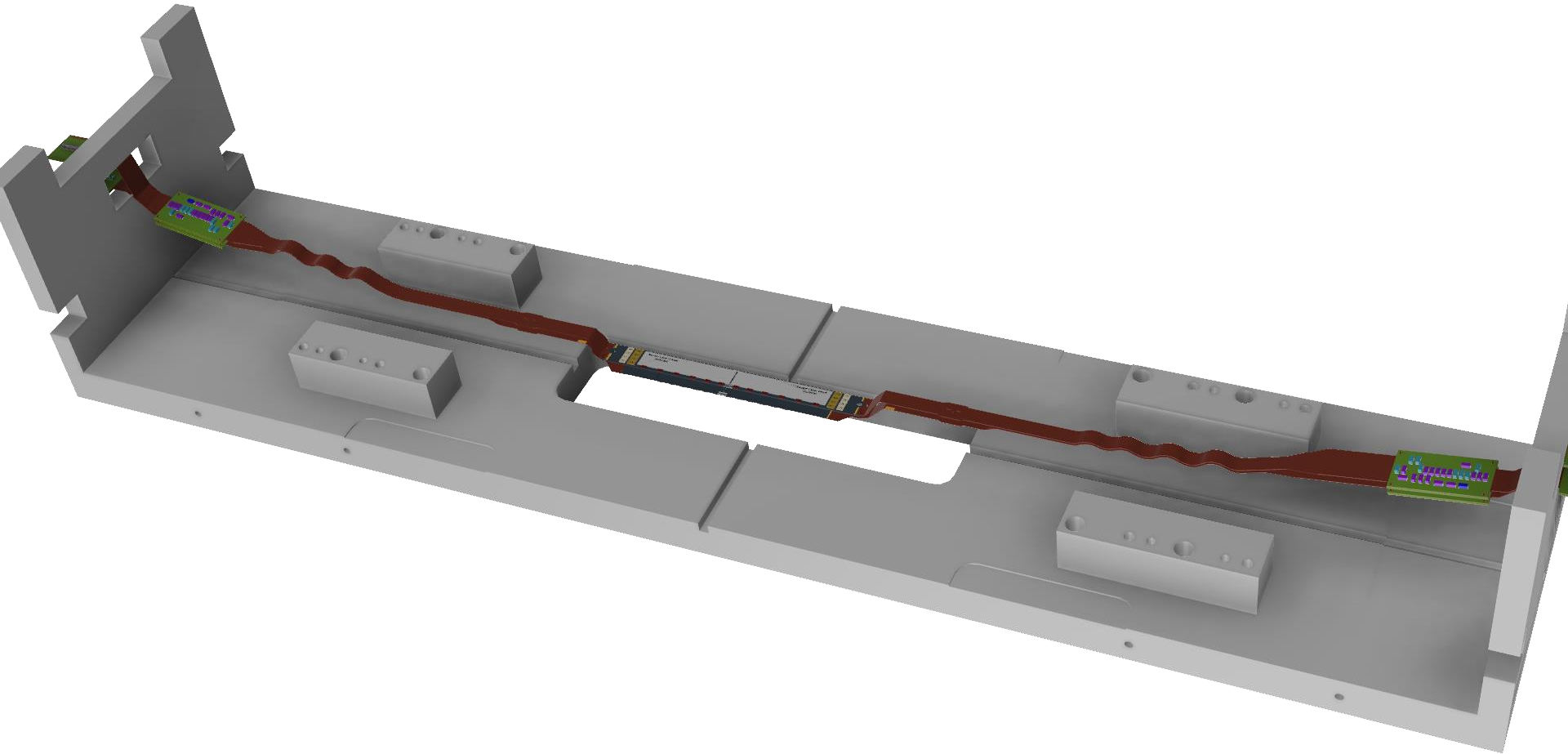


Dry Box



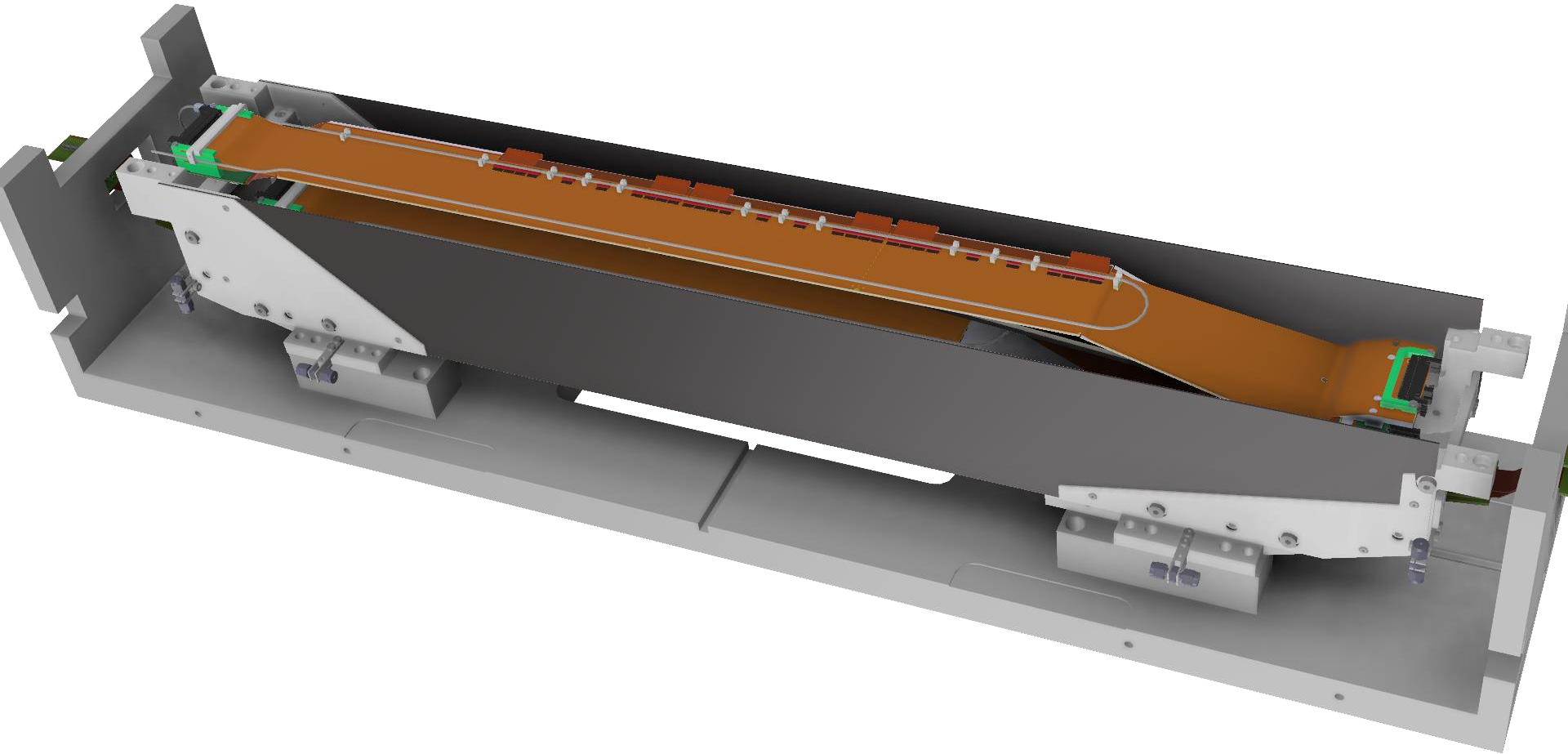
Test Beam set up to mimic Phase 2 arrangement

Dry Box

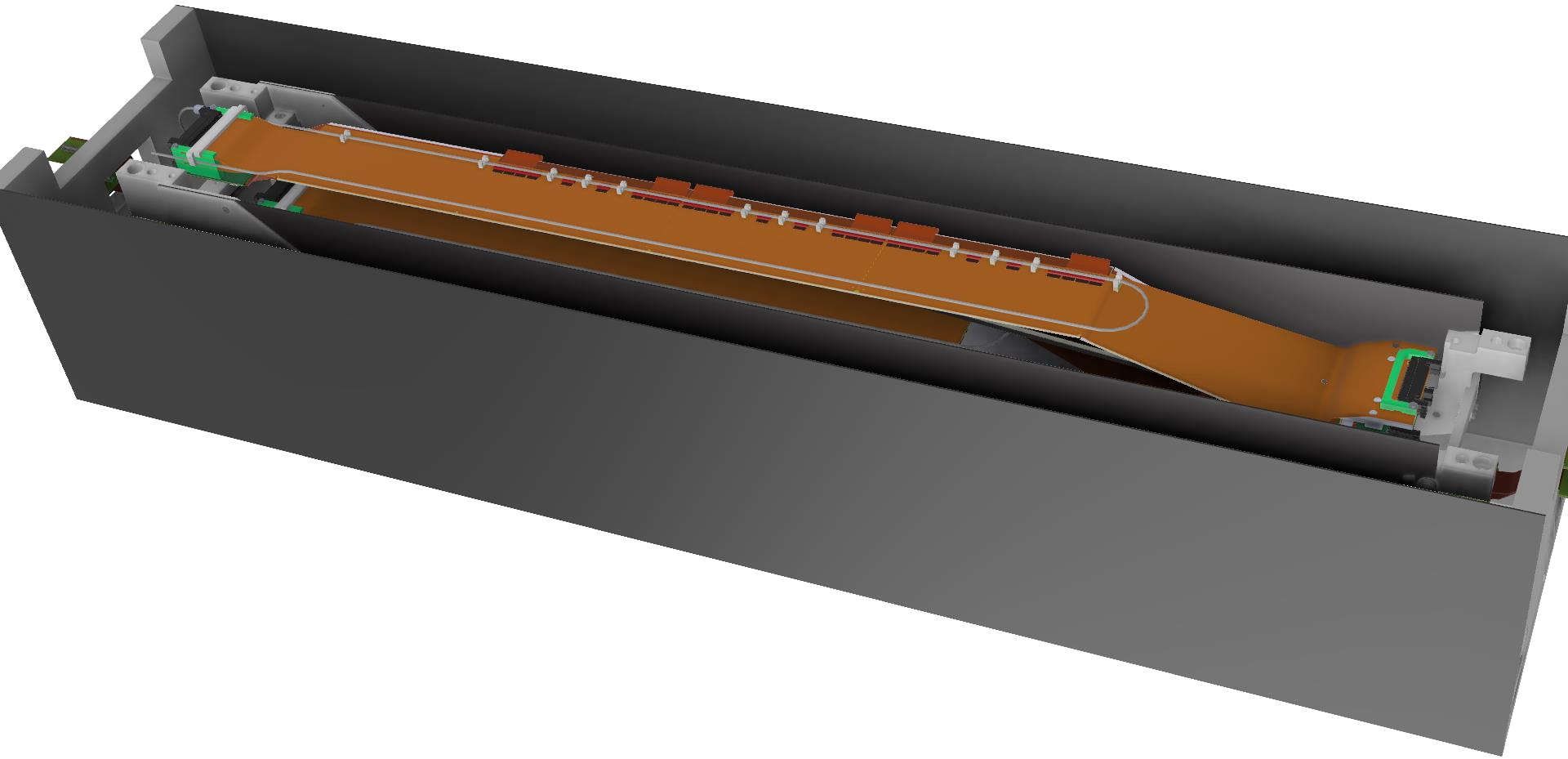


PXD SCB missing in this drawing

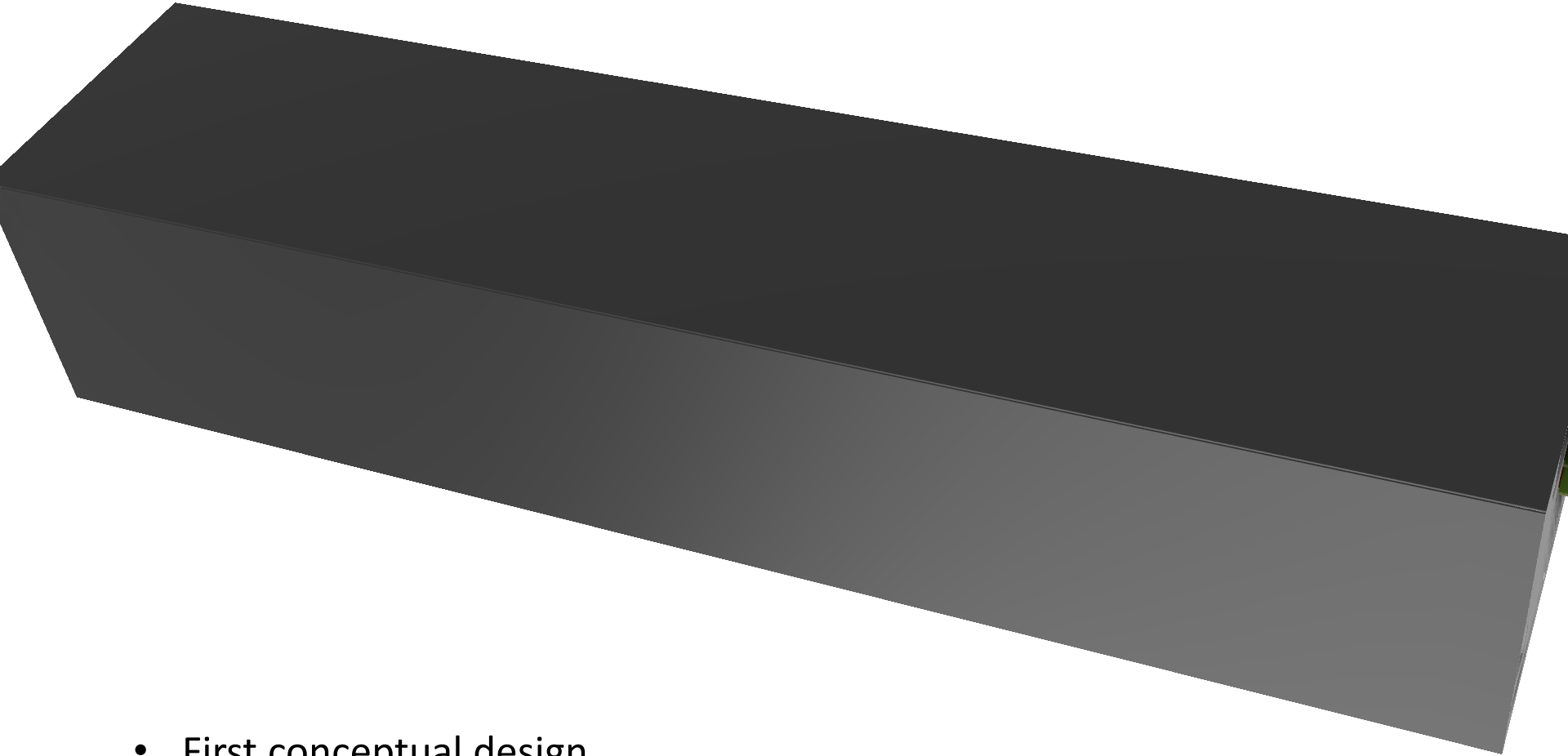
Dry Box



Dry Box

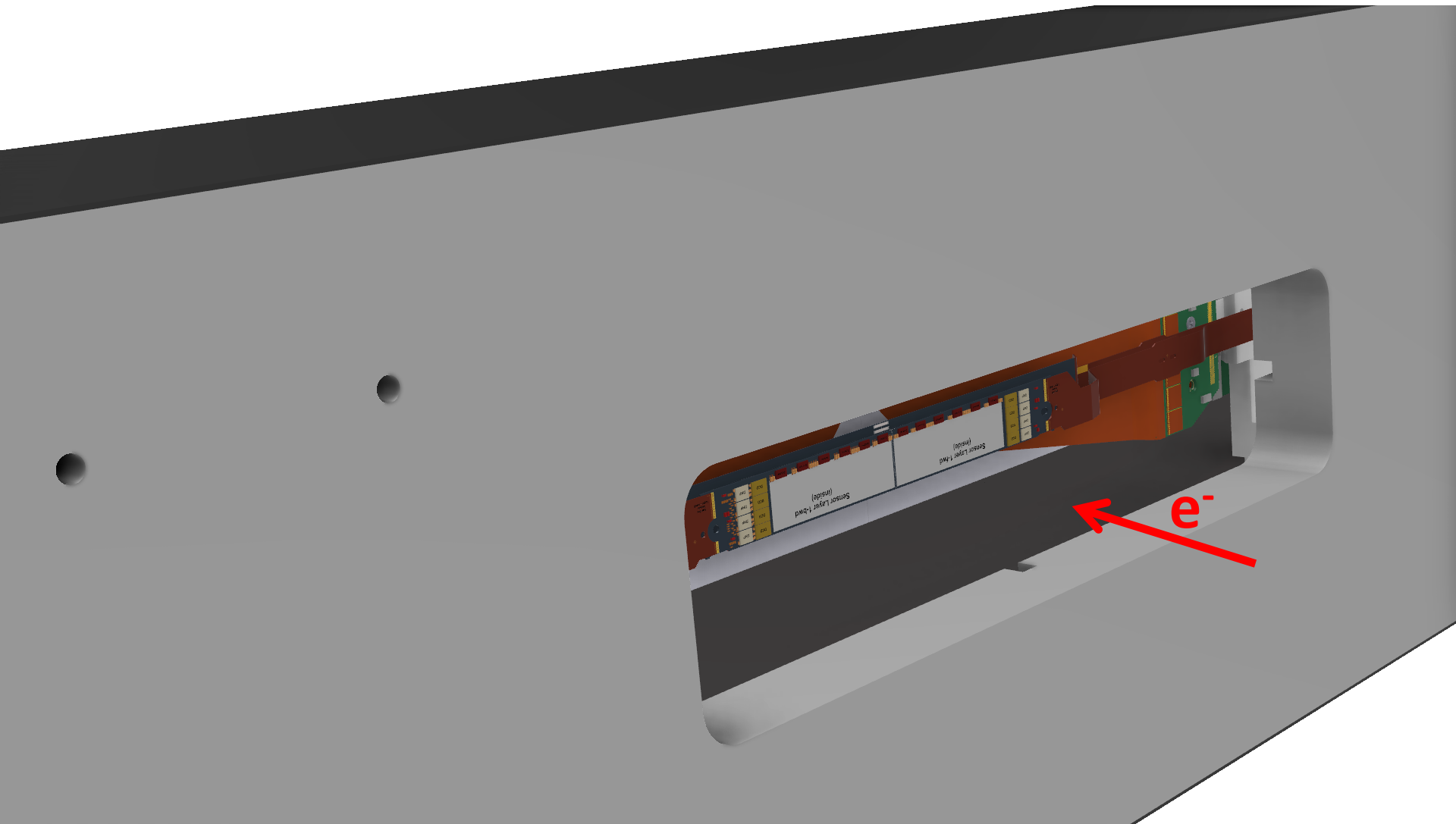


Dry Box



- First conceptual design

Dry Box

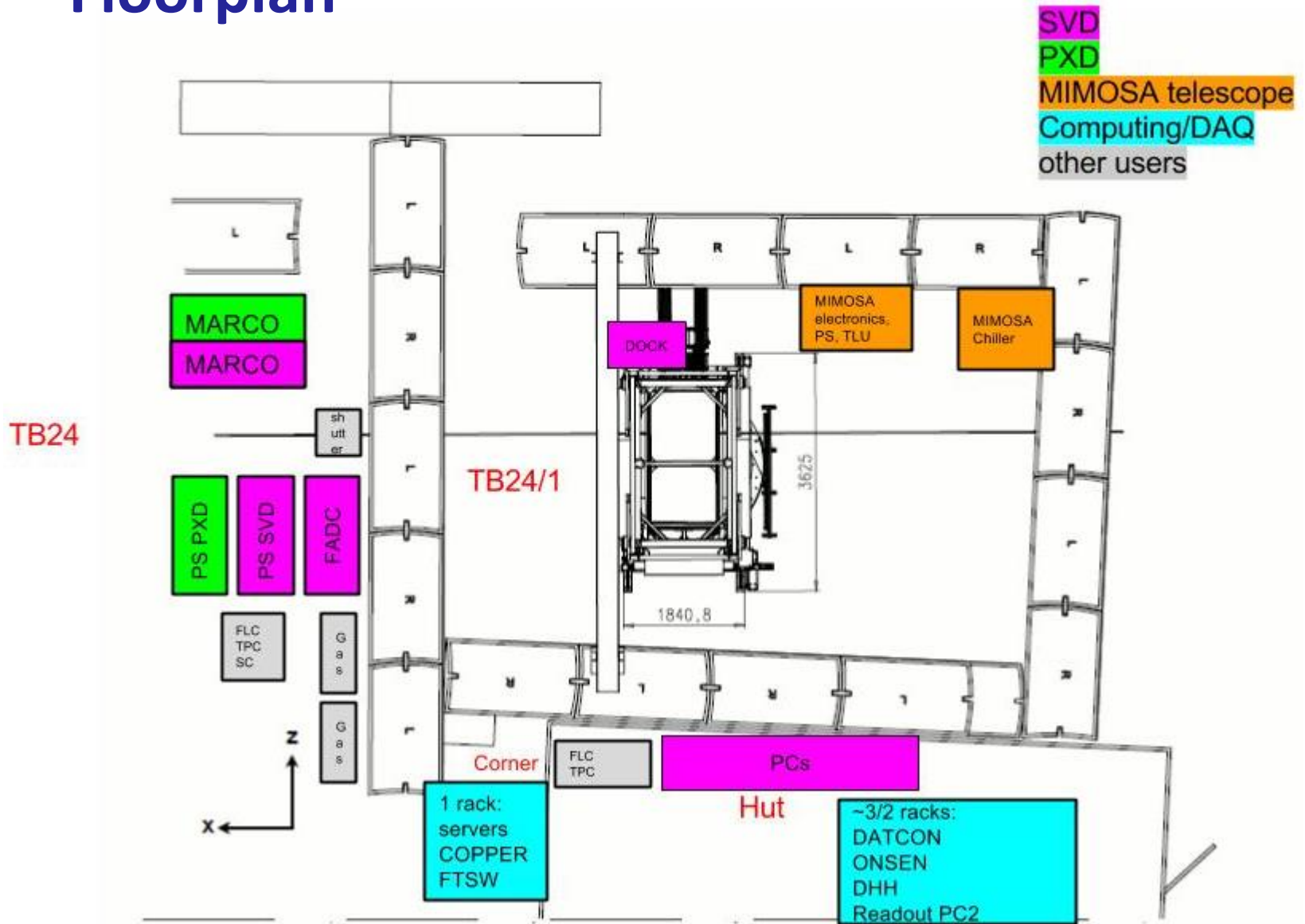


Box to be attached to the existing frame

Combined Test Beam 2014



Floorplan



Default floorplan distribution as in 2014

(Some) Open Issues

- Data Quality Monitoring (HitMaps, Pedestals, Noise) to be performed in ExpressReco via a BASF2 module. BonnDAQ for standalone PXD control
- Pedestal calculation: Full frames embedded in the data stream. Unpackers to be tested
- How do we do data merging at 250 MHz?
- Do we have all the equipment needed?
- Most part of the equipment should stay at DESY or be shipped again there by October 2016 → Phase 2 Commissioning tests in November

Additional Info

- DESY safety requirements:

<https://indico.desy.de/getFile.py/access?contribId=7&sessionId=5&resId=0&materialId=slides&confId=10685>

- Indico registration for the Belle II Test Beam
- DACHS ID Card on site
- Safety Course (Mondays 13h00)

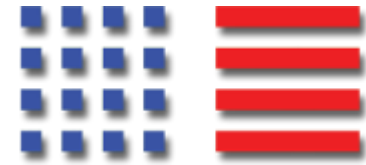
- PXD Participants List:

https://docs.google.com/spreadsheets/d/1s6yj1QgzxW64QSZ5Ap6RQ332wl_IKFm5su9nvROEt40/edit#gid=0

- Logistics:

https://docs.google.com/spreadsheets/d/1_TASHzCRCjkKgByLdt1IXXMVPI1UBfBDuXpQODivy44/edit#gid=0

- AIDA TA finally available for 4 Japanese, 1 Indian and 1 Austrian scientists
- TB meetings held bi-weekly from on Fridays at 9h00 CET



Thanks