

Phase 2

Cabling and Piping

Phase 2 Detector Systems

Teams should be notified at least 4 weeks prior to the start of any work

Sensor	Contact	Number	Location
Belle II PXD	C. Marinas	2 ladders	VXD
Belle II SVD	K. Nakamura	4 ladders	VXD
Diamond Sensors	L. Vitale	8 diamonds	VXD
FANGS	C. Marinas	3 arms 15 chips	VXD
CLAWS	F. Simon	2 ladders	VXD
PLUME	I. Ripp-Baudot	2 ladders	VXD
PIN diodes	H. Nakayama K. Nakamura	40+40	QCS
Micro-TPC	S. Vahsen	8 units	Dock
He-3	S. De Jong	4 units	Dock



9+2 different technologies and detector systems

Sensor	Contact	Number	Location
FPGA**	R. Giordano	2 boards	SuperKEK pipe
LYSO-ECL**	A. Fodor	4+4 crystals	ECL endcap shield

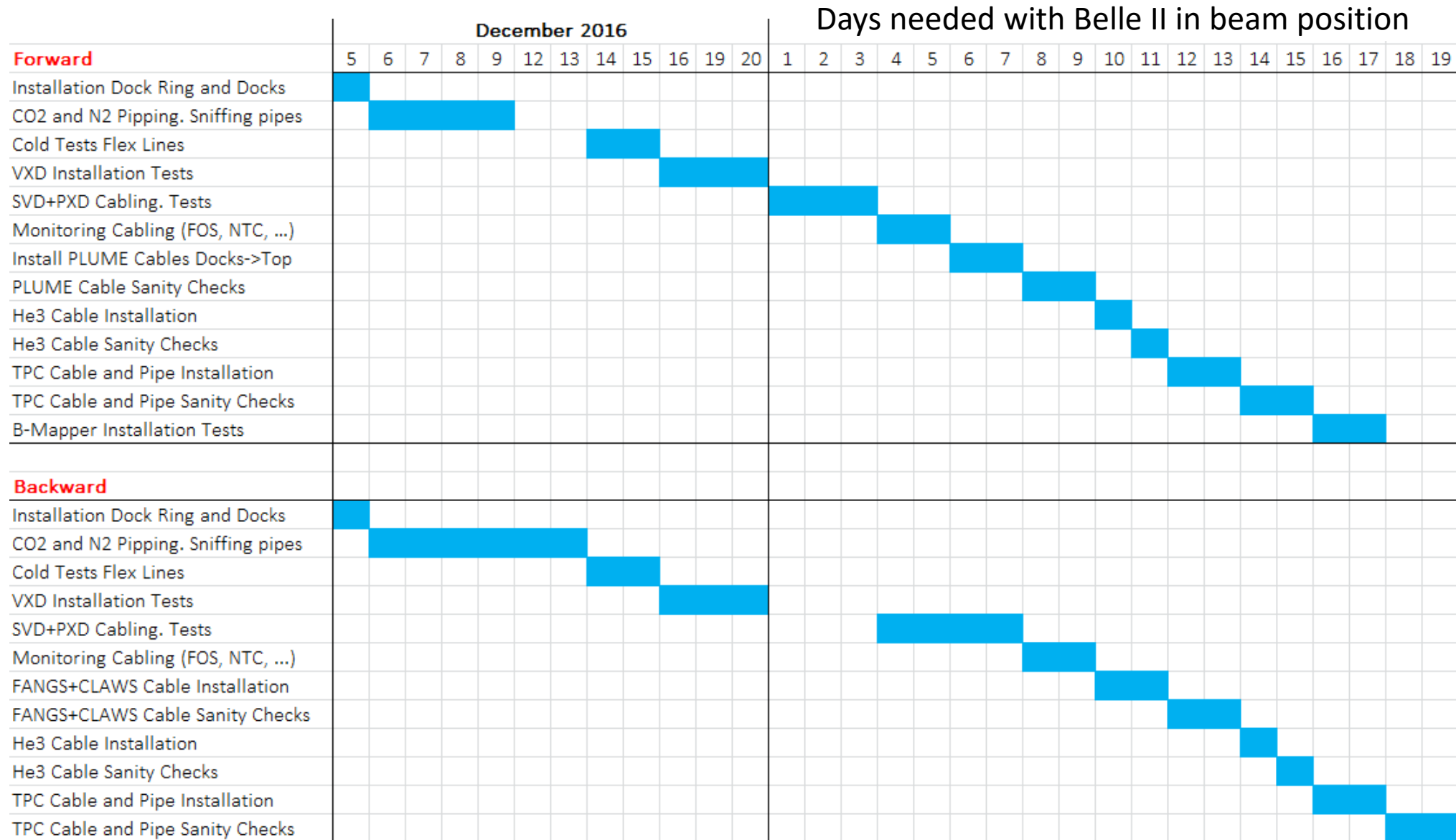
Constraints (10.09.2016)

1. CDC installation work starts on: **10th October 2016** (if no issues with TOP)
2. ECL end cap installation needs 1.5 months
3. Belle II has to roll in beginning February 2017
4. Cabling and pipping work should be flexible to happen in two steps (before and after Belle II roll in)

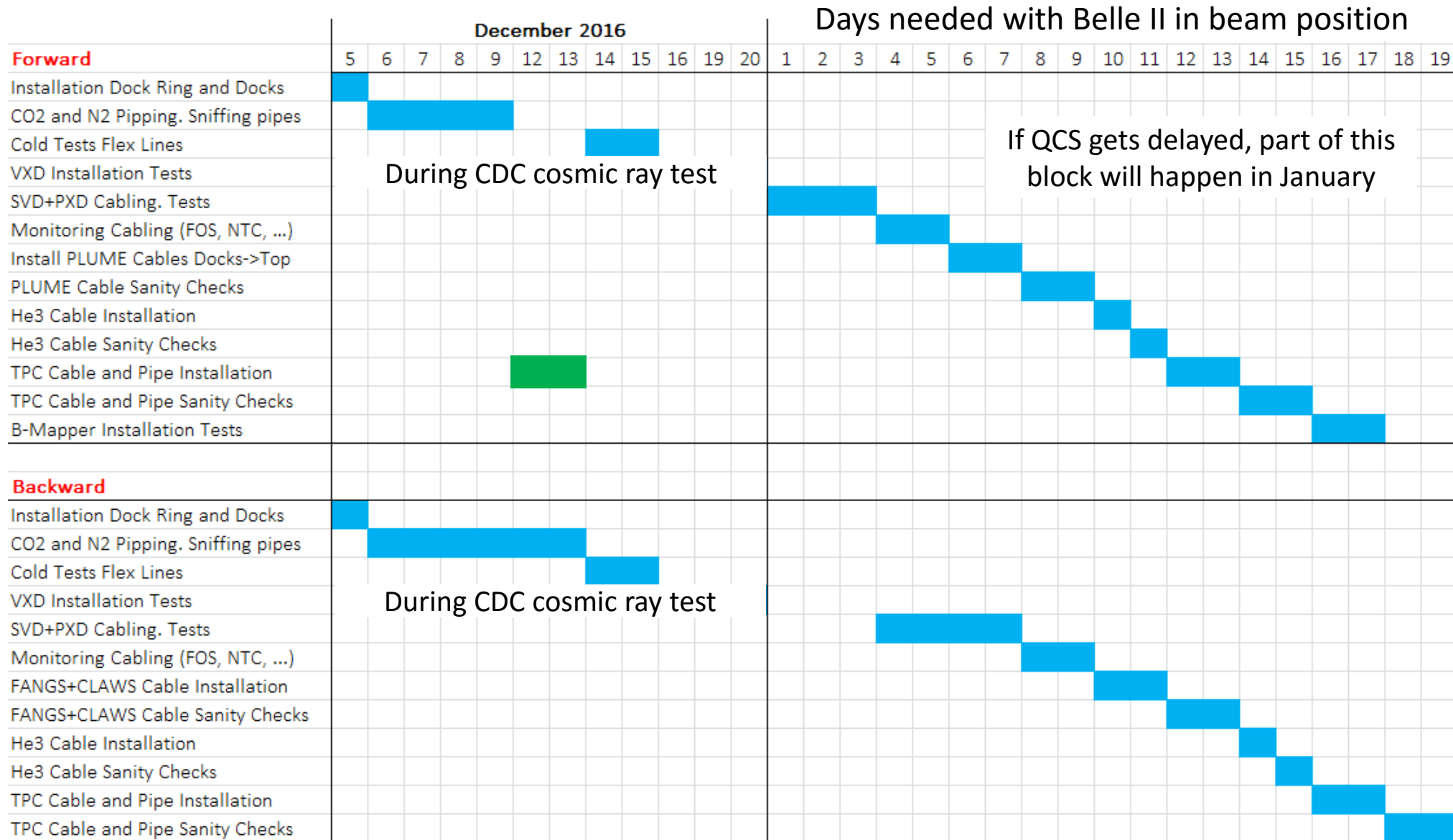
Installation Plan

- Two actions needed before the ECL is installed and before Belle II rolls in:
 - VXD installation exercise
 - CO₂ and N₂ piping
- Depending on when we can start (either after CDC completed or during the CDC cosmic ray test) we could switch the order of the two actions.
- ECL could start installation during Xmas
- VXD and Phase 2 cabling will happen with Belle II on the beam line

Cabling and Piping Work



Cabling and Piping Work



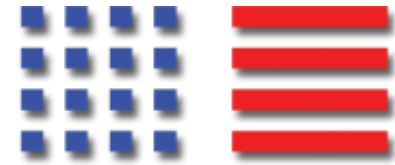
During CDC cosmic ray test

If QCS gets delayed, part of this block will happen in January

During CDC cosmic ray test

Summing Up

- Cabling and piping (only partial in some of the cases) will take 7 working weeks by parallelizing work in FWD and BWD.
- Monday to Friday. Contingency → Sat/Sun
- Given the current constraints we have to start no later than:
5th December 2016
- Final TOP and CDC schedule will influence the starting date
- CO₂/N₂ piping work (with no breaks) and installation exercise before Xmas
- VXD and Phase 2 cabling once Belle II is rolled in



Thanks