



# Test reports from MPP

Philipp Leitl, Felix Mueller  
DEPFET Lab 04.10.2017



# Module checks before glueing

- **DHPT high speed (HS) Links**  
short scan (to have a reference for later)
  - bias 200 to 250, step 5 ~15 min
  - bias\_d 100 to 150, step 5
  - delay 0
- **Delays** ~15 min
- **ADCs optimization using small parameter space** ~14 h (night scan)
- **Pedestal/noise (1k frames)** ~10 min
- **2-bit offset (delay and current source optimization)** ~ 15 min
- **Pedestal/noise (1k frames)** ~10 min
- **DCD analog common mode correction (ACMC)** ~1 min
- **Pedestal/noise (1k frames)** ~10 min
- **Source measurement different regions** ~ ? min/h
  - Threshold 5
  - Verify shape of the spectra
  - SNR in different regions
  - Adjust VNSubIn / Use ACMC



**W47\_IB:** hs\_link, delays, pedestals, adc\_curves, sample\_point\_curve, offsets, pedestal & noise, APMC, source scan (currently ongoing)

**W02\_IB:** hs\_link, delays, pedestals, adc\_curves, offsets, pedestals & noise, APMC, source ✓

**W47\_IF:** hs\_link, delays, pedestals, adc\_curves, offsets, pedestals & noise, APMC,

**W44\_IF:** under test

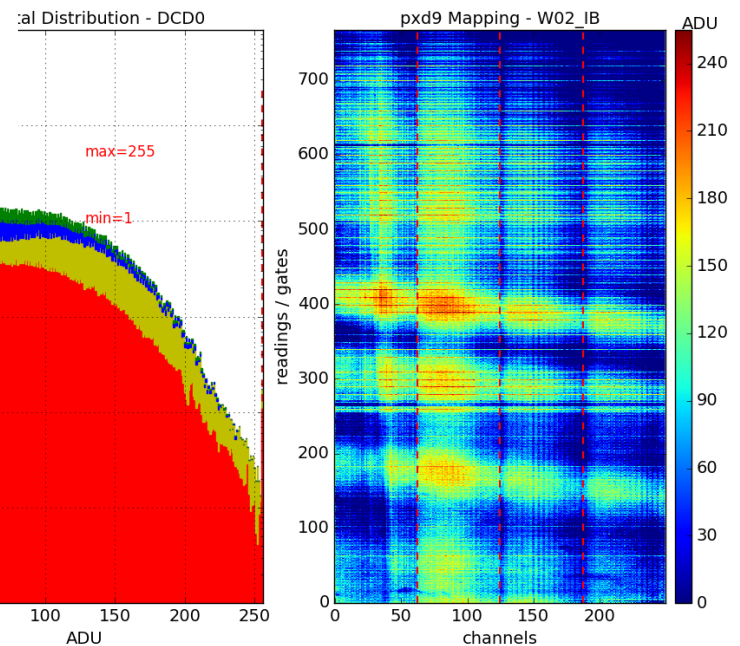
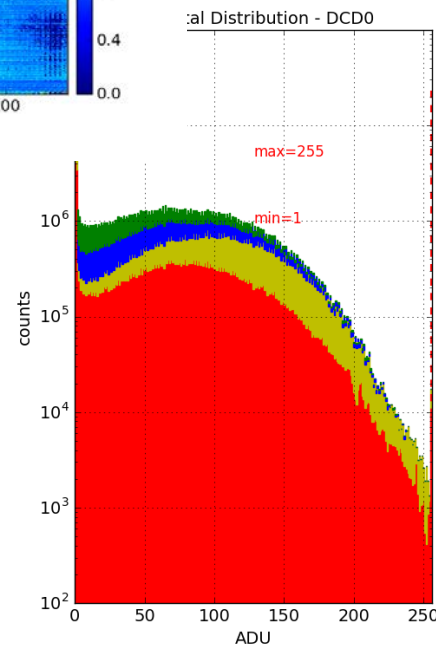
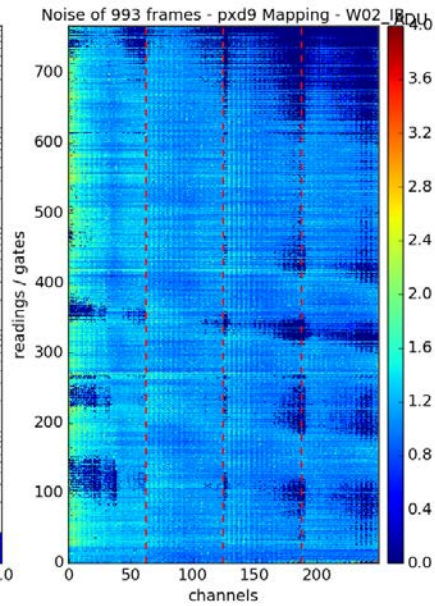
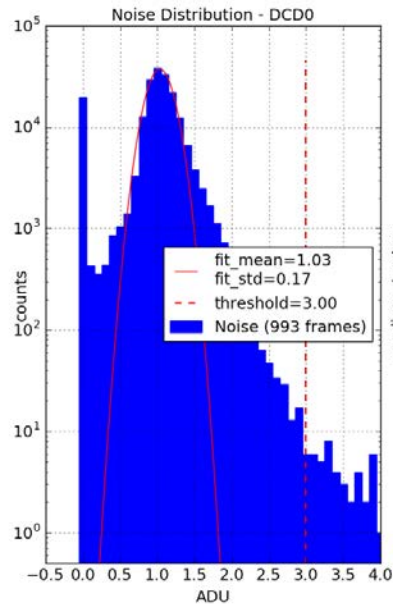
**W46\_IF.** HLL for rings and GM



# W02\_IB

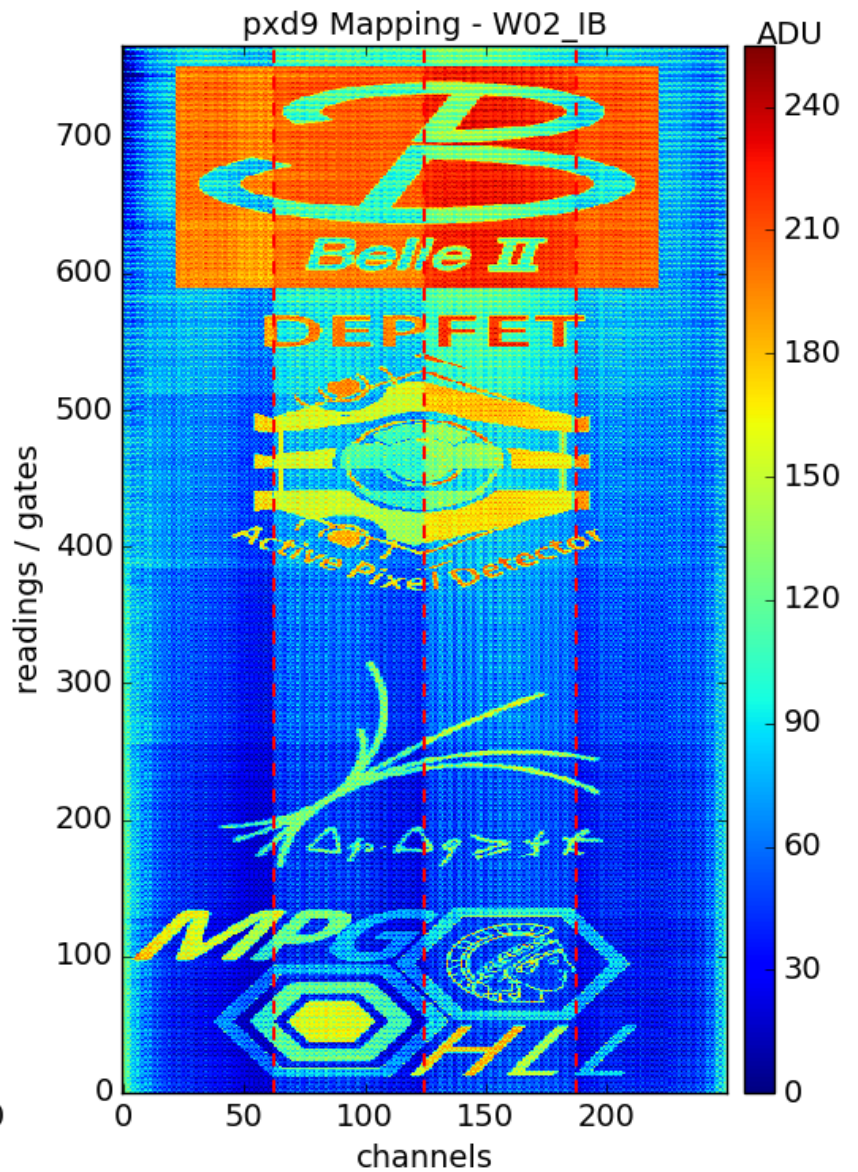
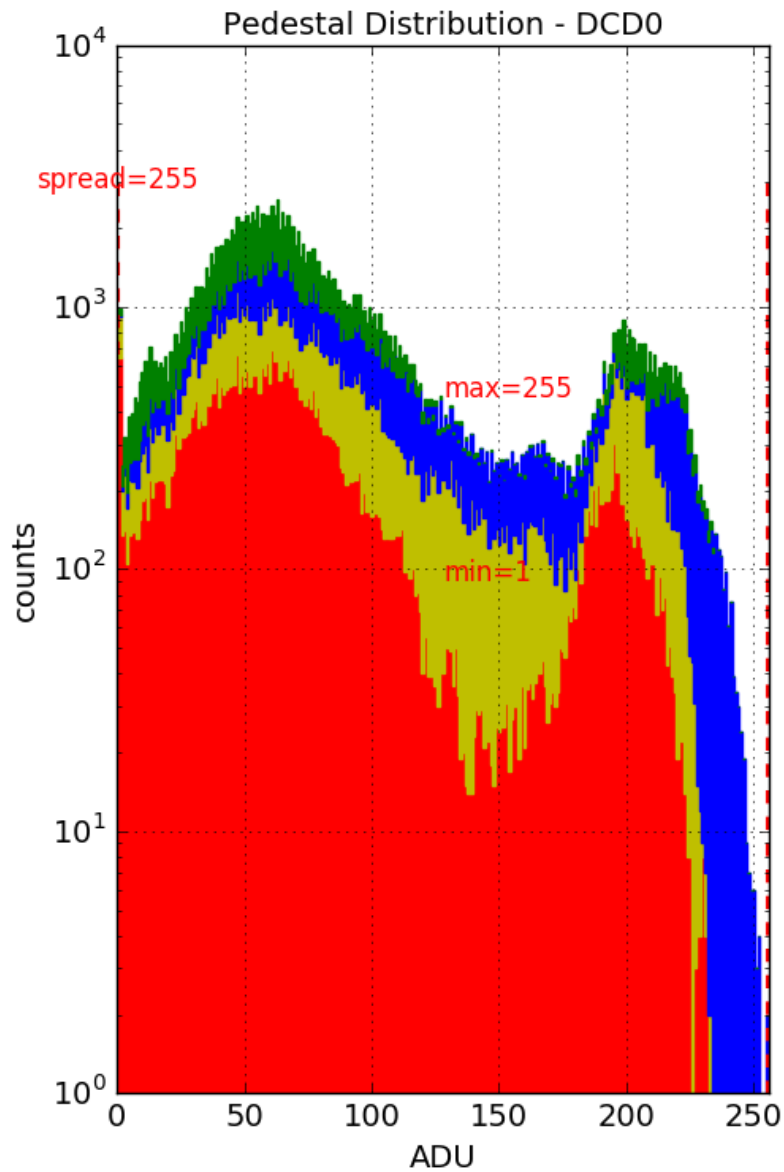


# W02\_IB – pedestals without offsets, without ACMC



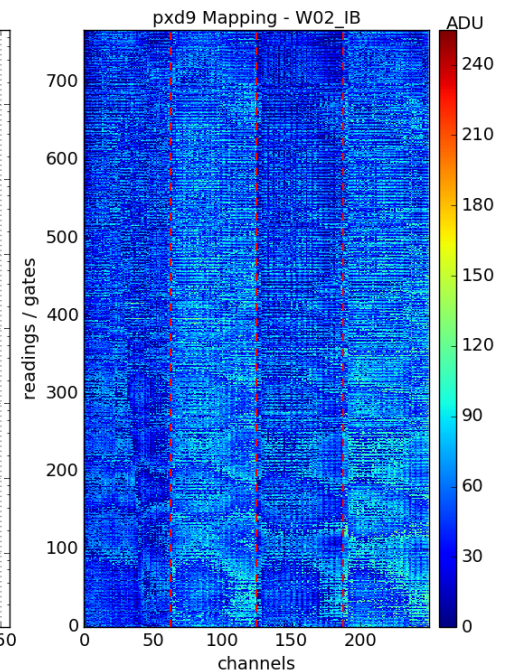
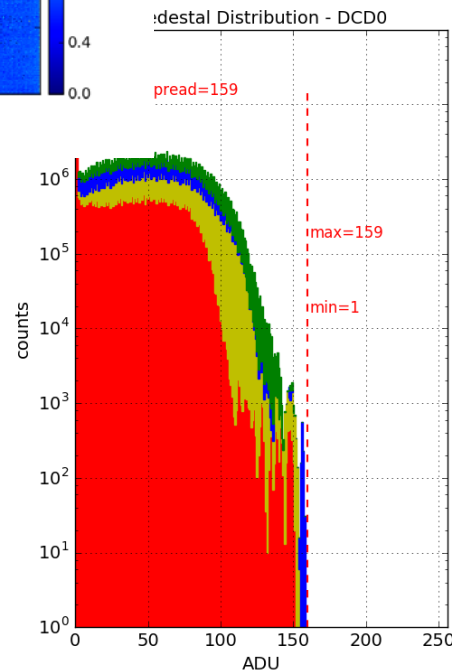
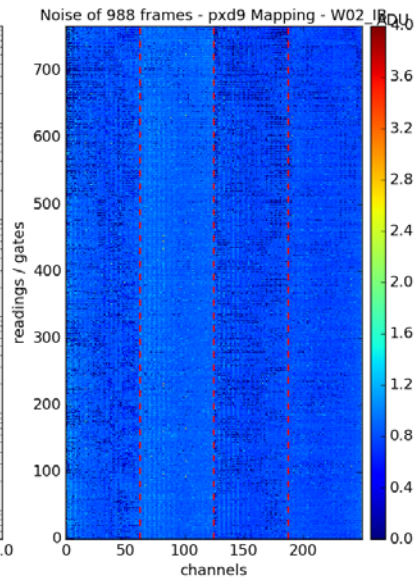
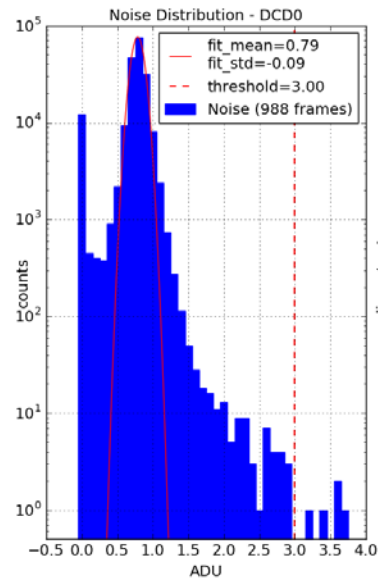


# W02\_IB – offset delays





# W02\_IB – pedestals with offsets, with ACMC

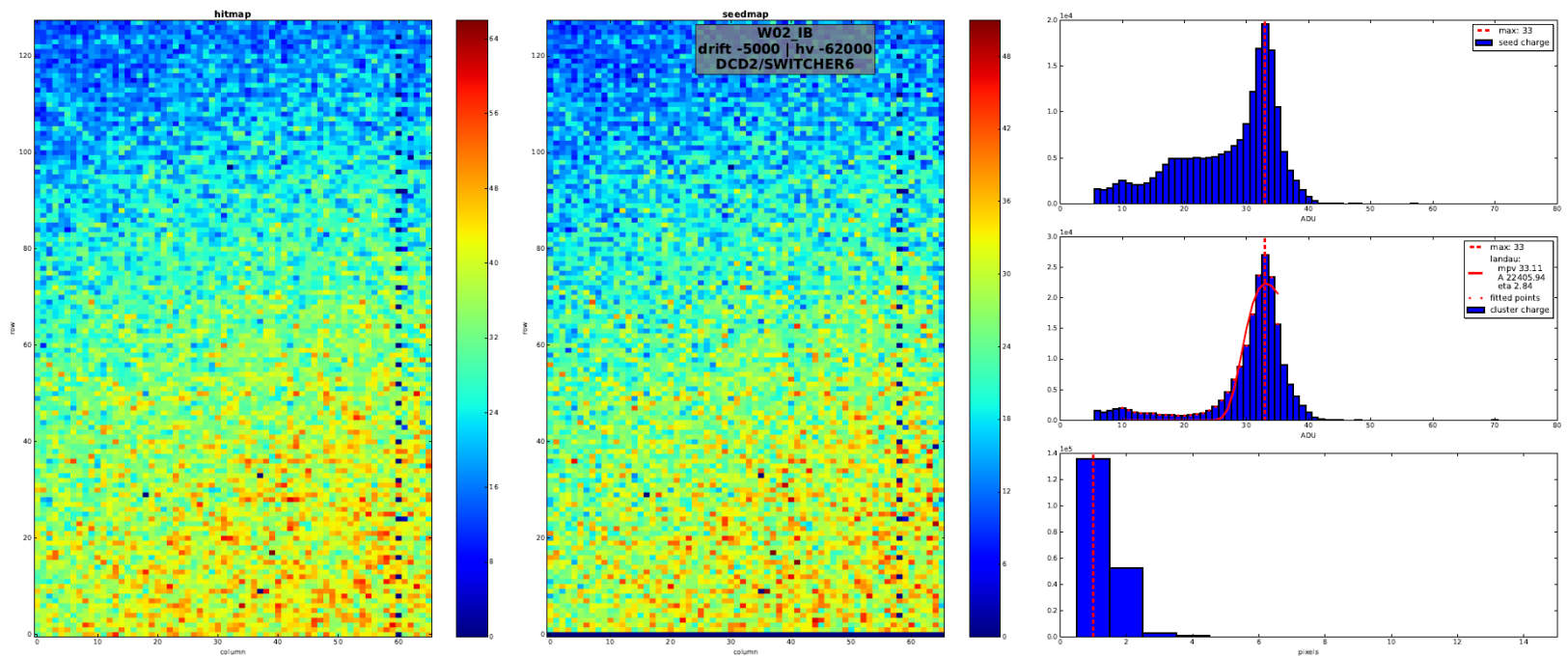




# W02\_IB - source

Measurement done

Analysis currently ongoing



/pxdtest8/W02\_IB/source\_scan/2017\_10\_02\_004/hv-62000\_drift-5000

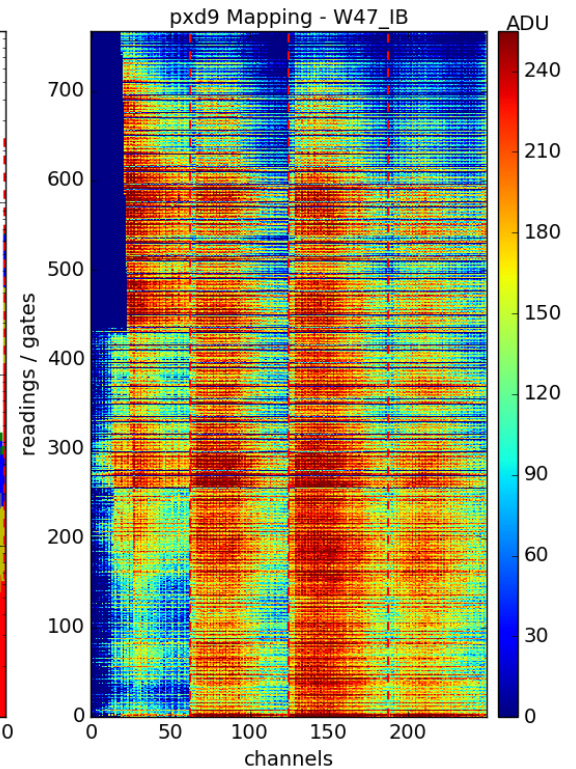
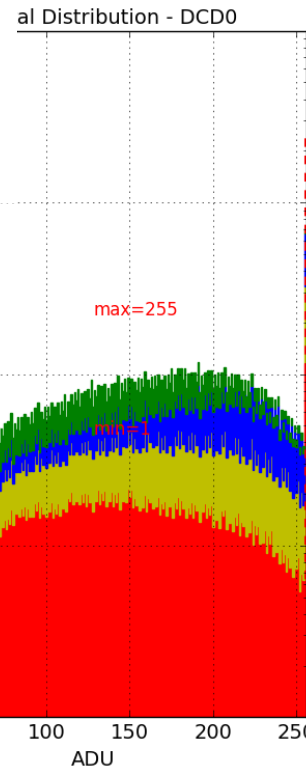
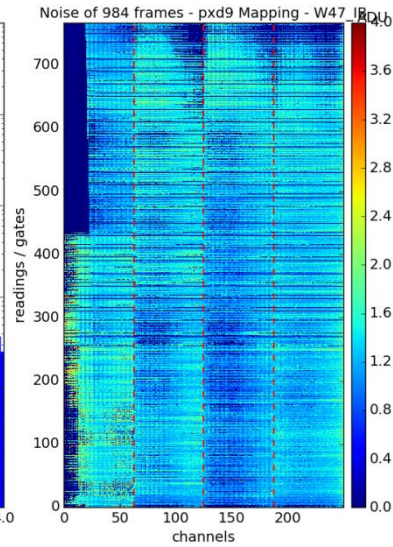
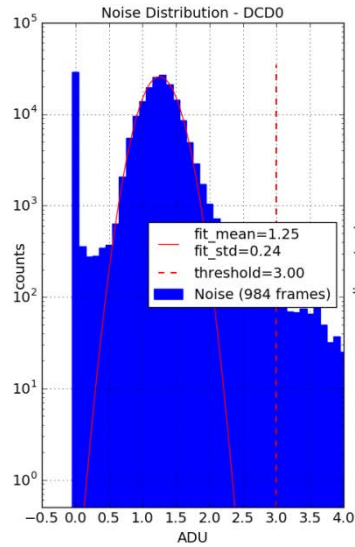




# W47\_IB

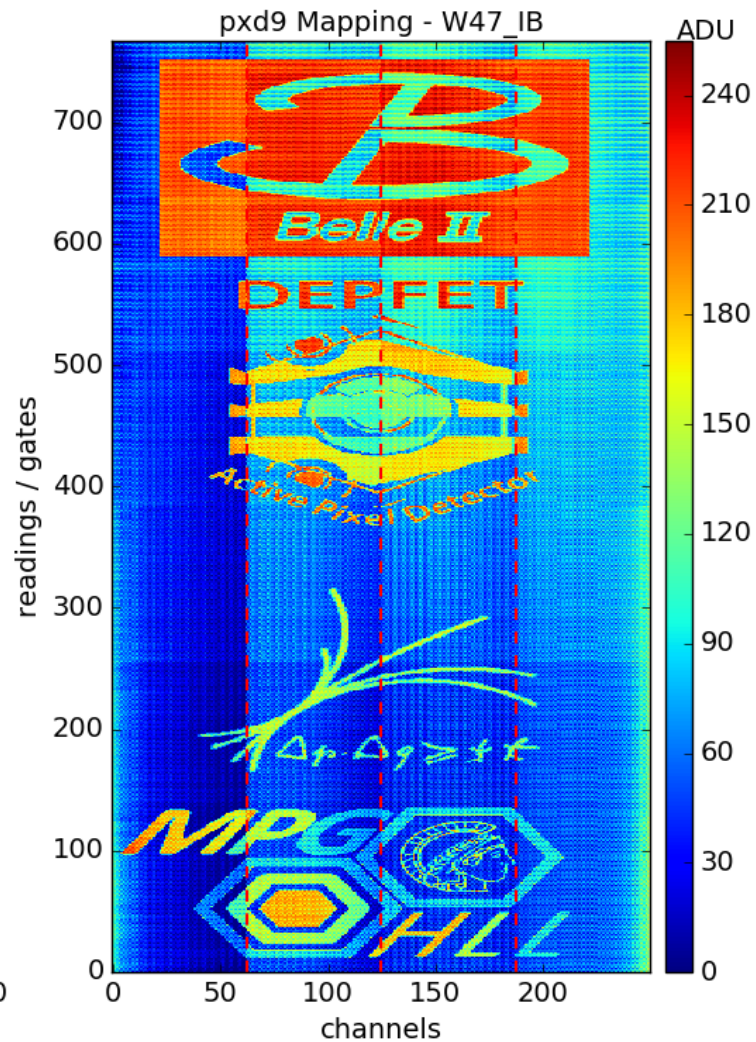
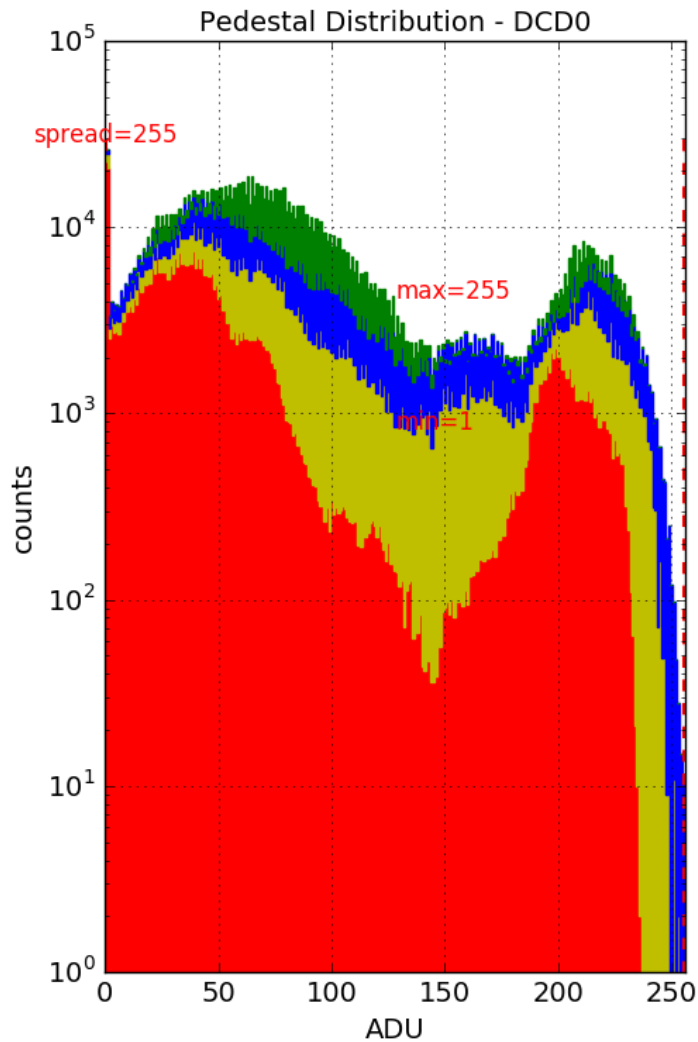


# W47\_IB – pedestals without offsets, without ACMC



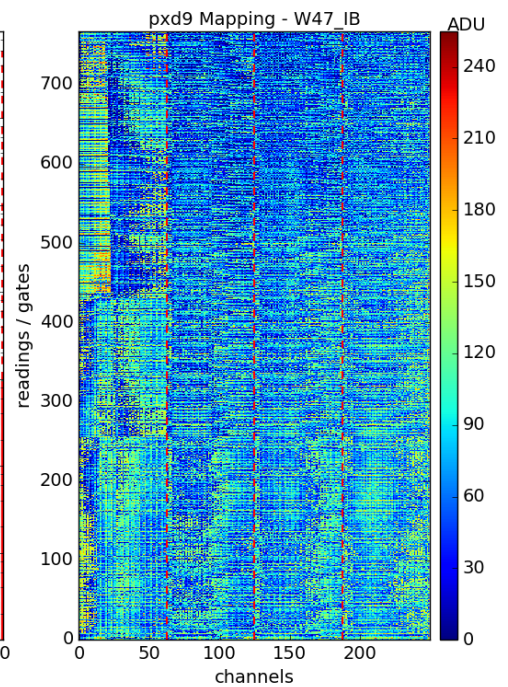
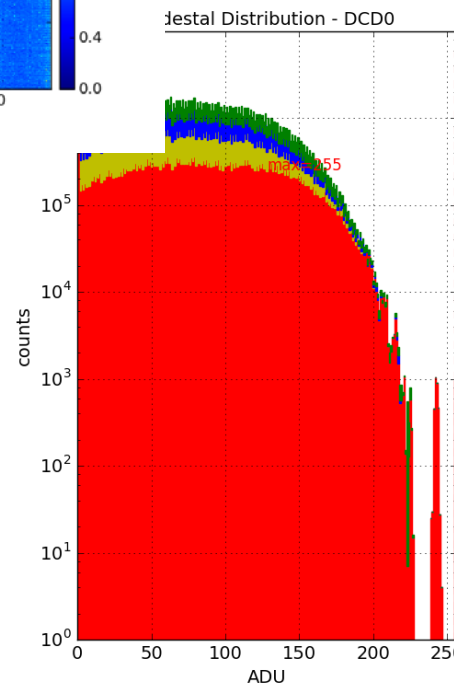
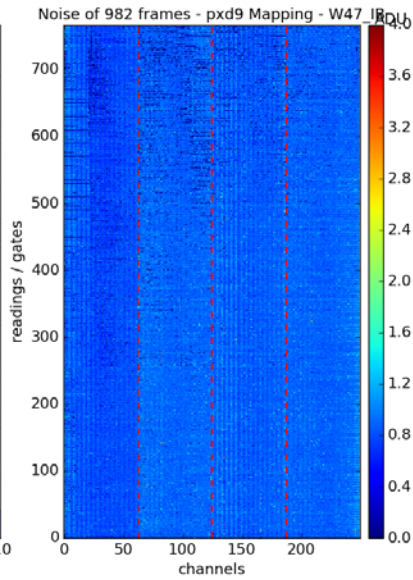
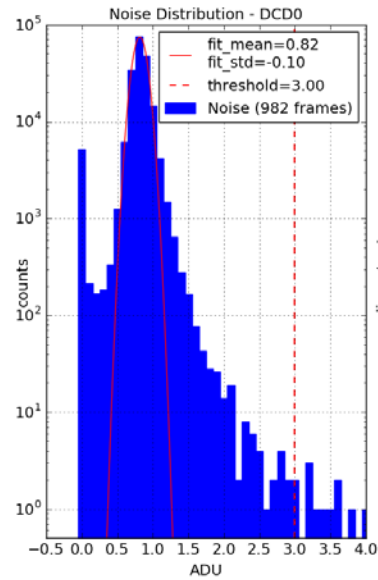


# W47\_IB – offset delays





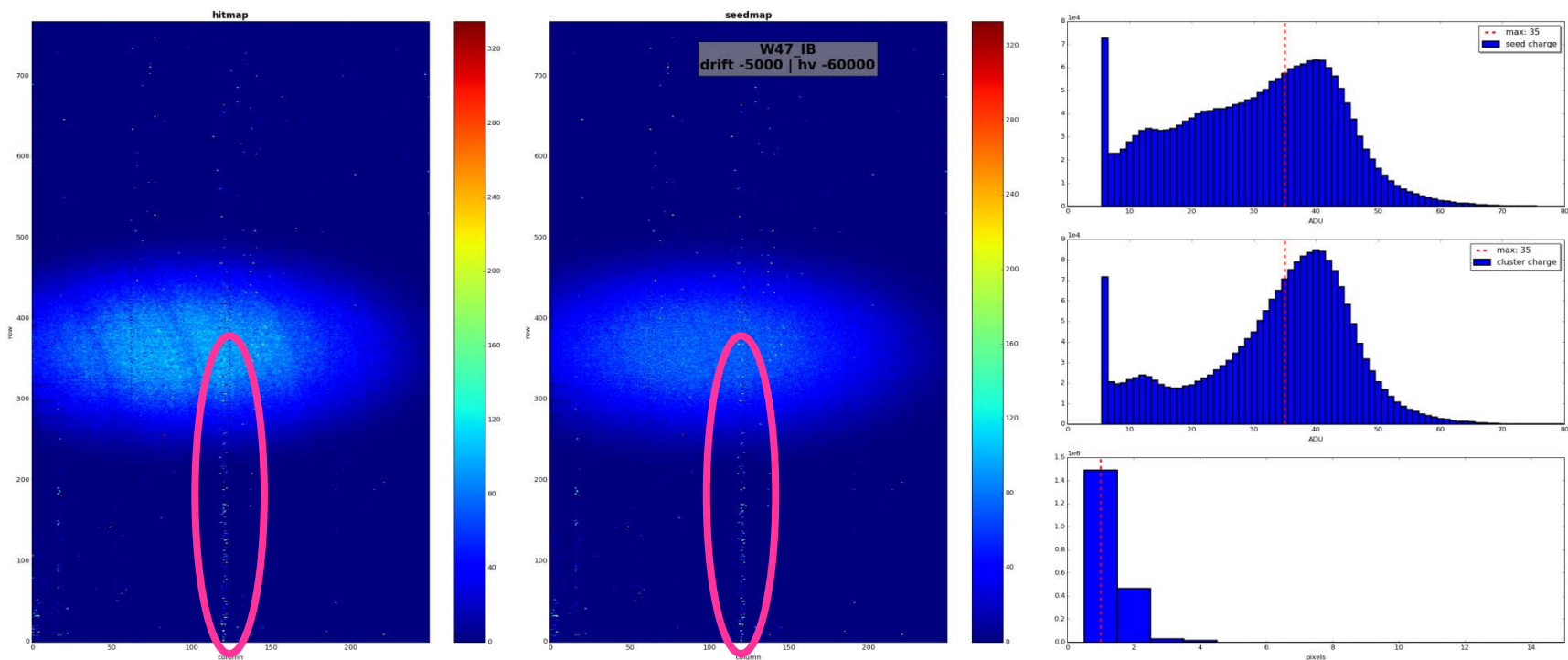
# W47\_IB – pedestals with offsets, with ACMC





# W47\_IB - source

Measurement currently ongoing & some noisy pixel



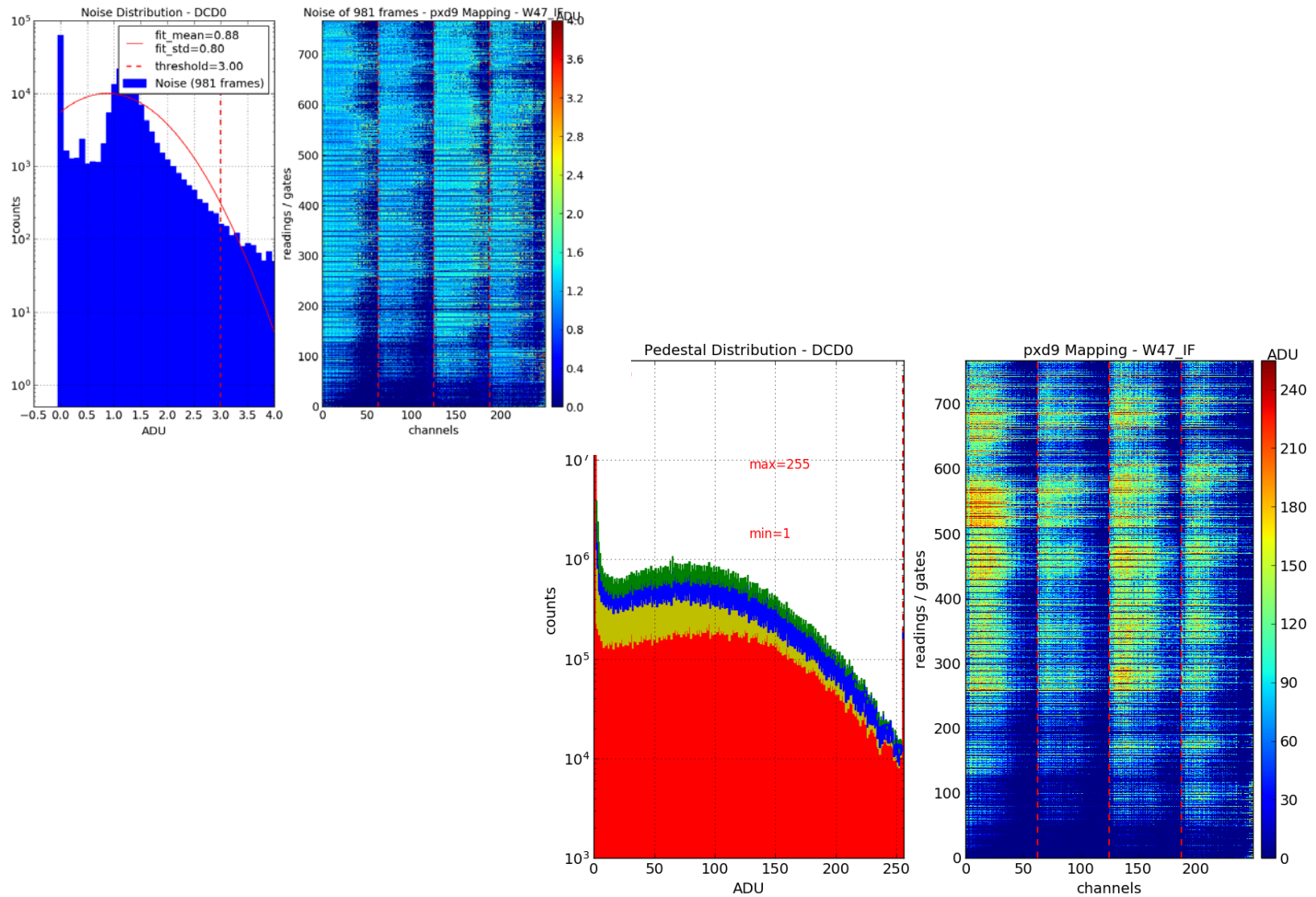
/pxdtest1/W47\_IB/source\_scan/2017\_10\_04\_001



**W47\_IF**

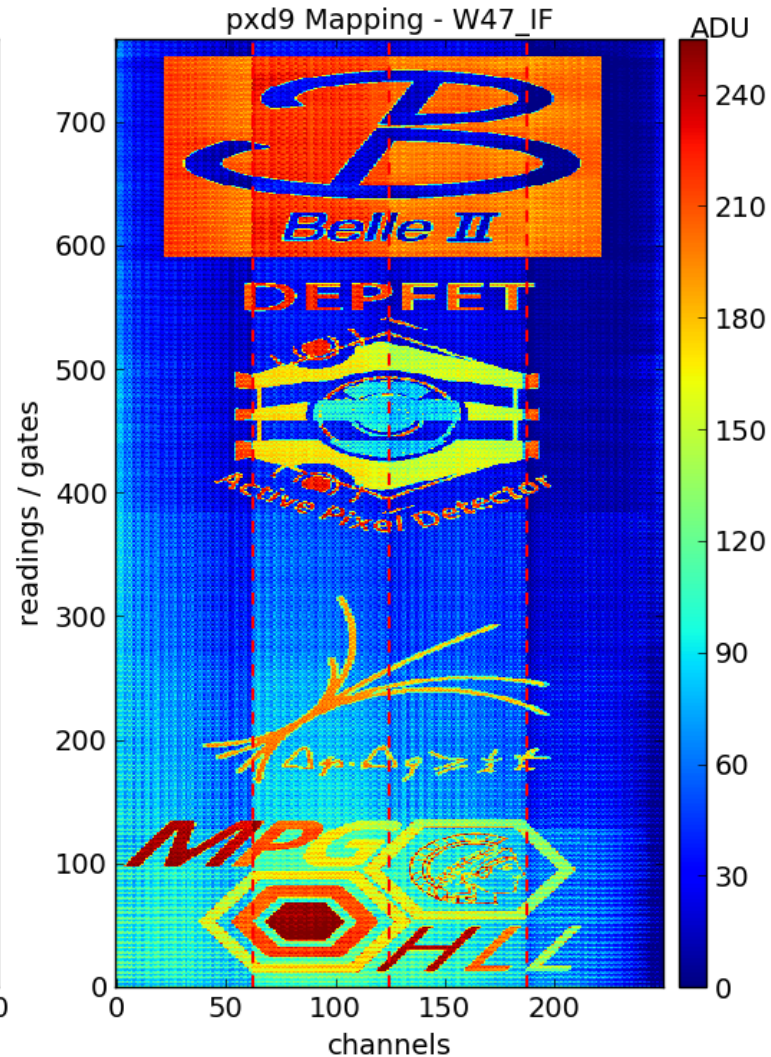
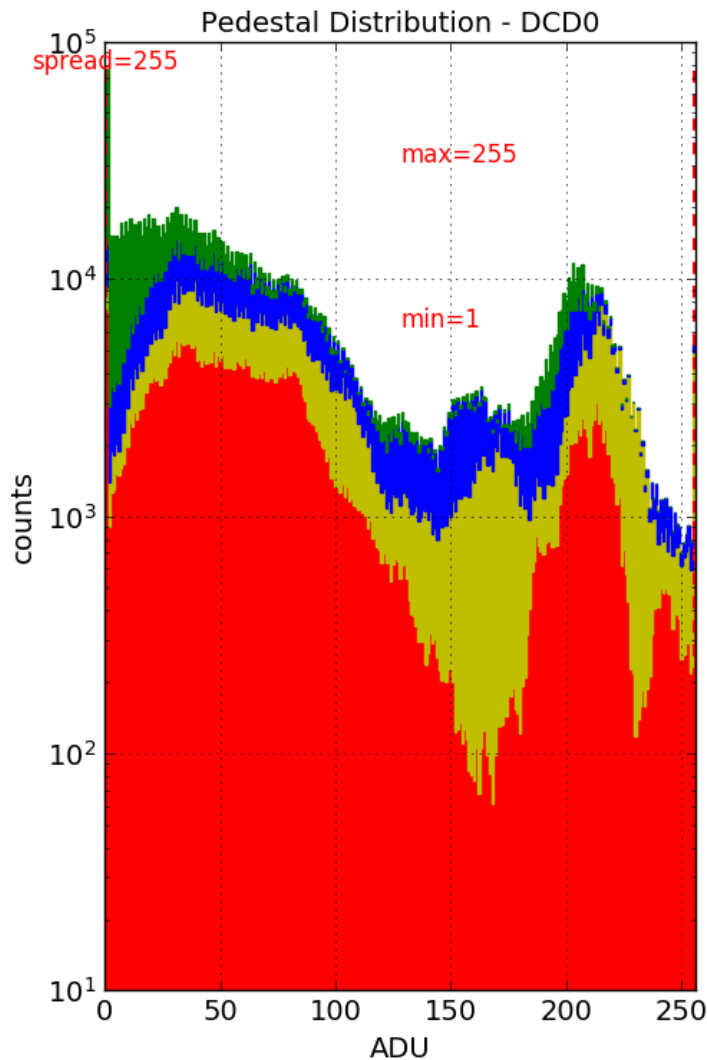


# W47\_IF – pedestals without offsets, without ACMC





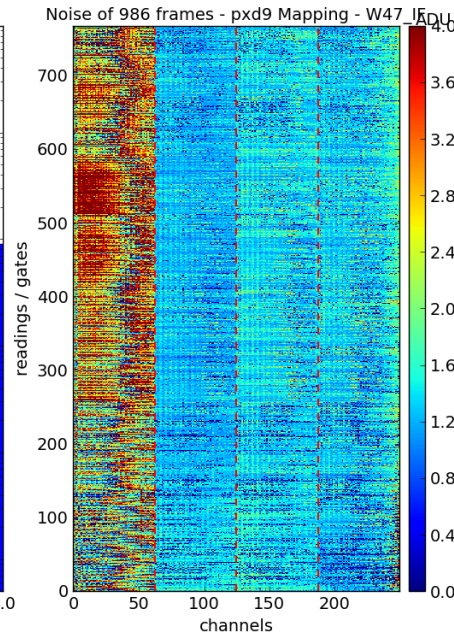
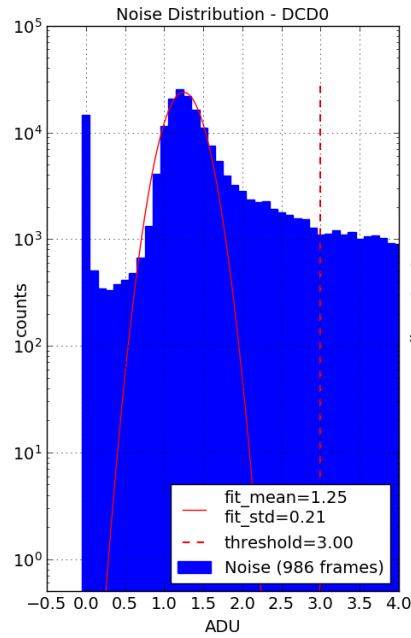
# W47\_IF – offset delays



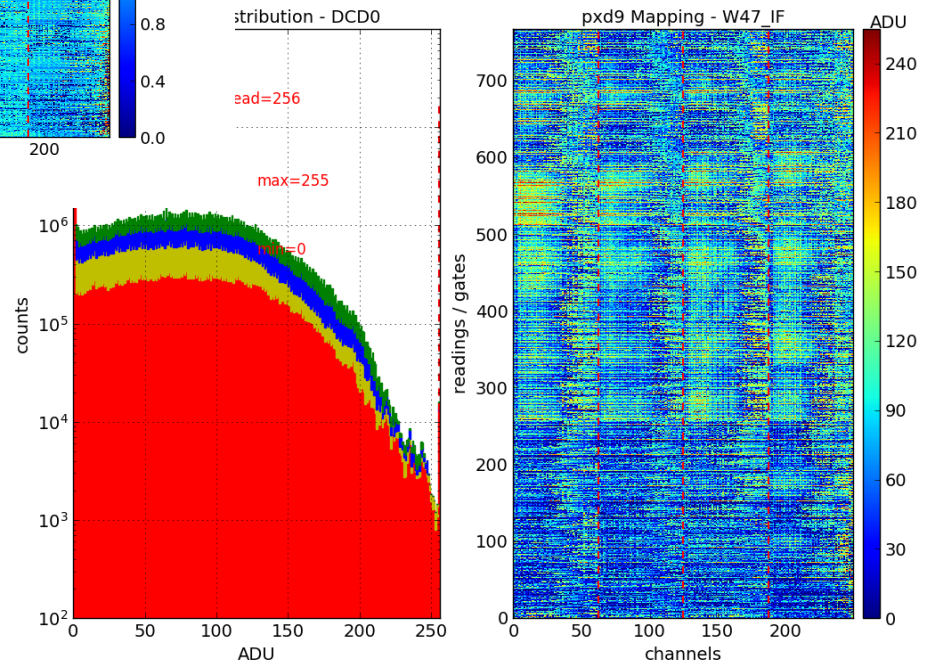




# W47\_IF – pedestals with offsets, without ACMC

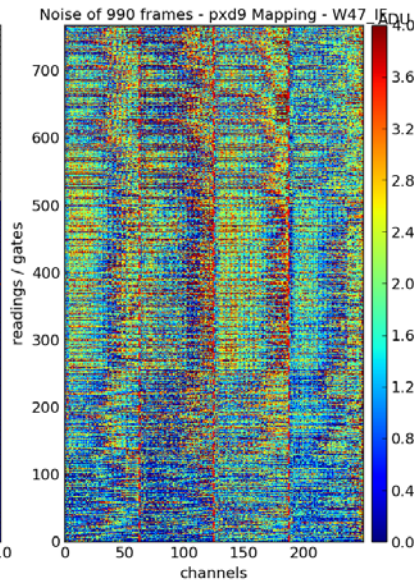
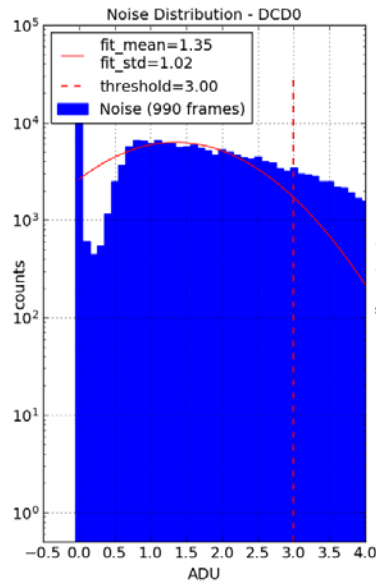


high noise on DCD1

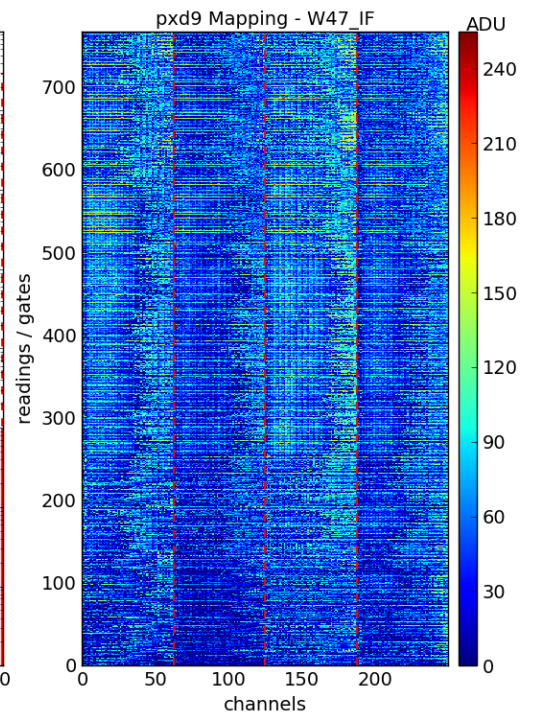
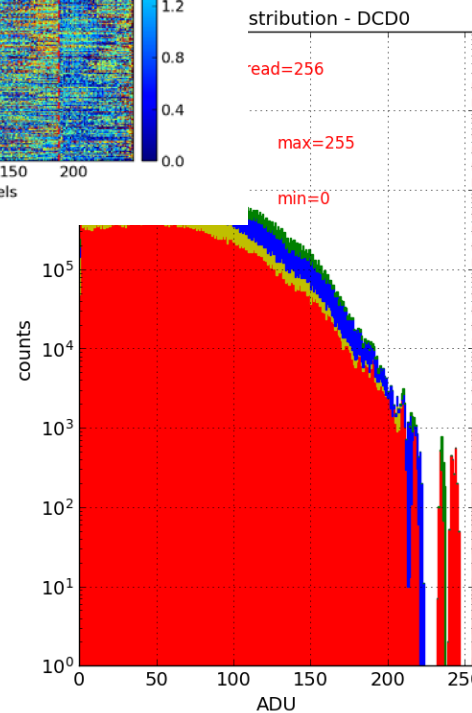




# W47\_IF – pedestals with offsets, with ACMC



high noise

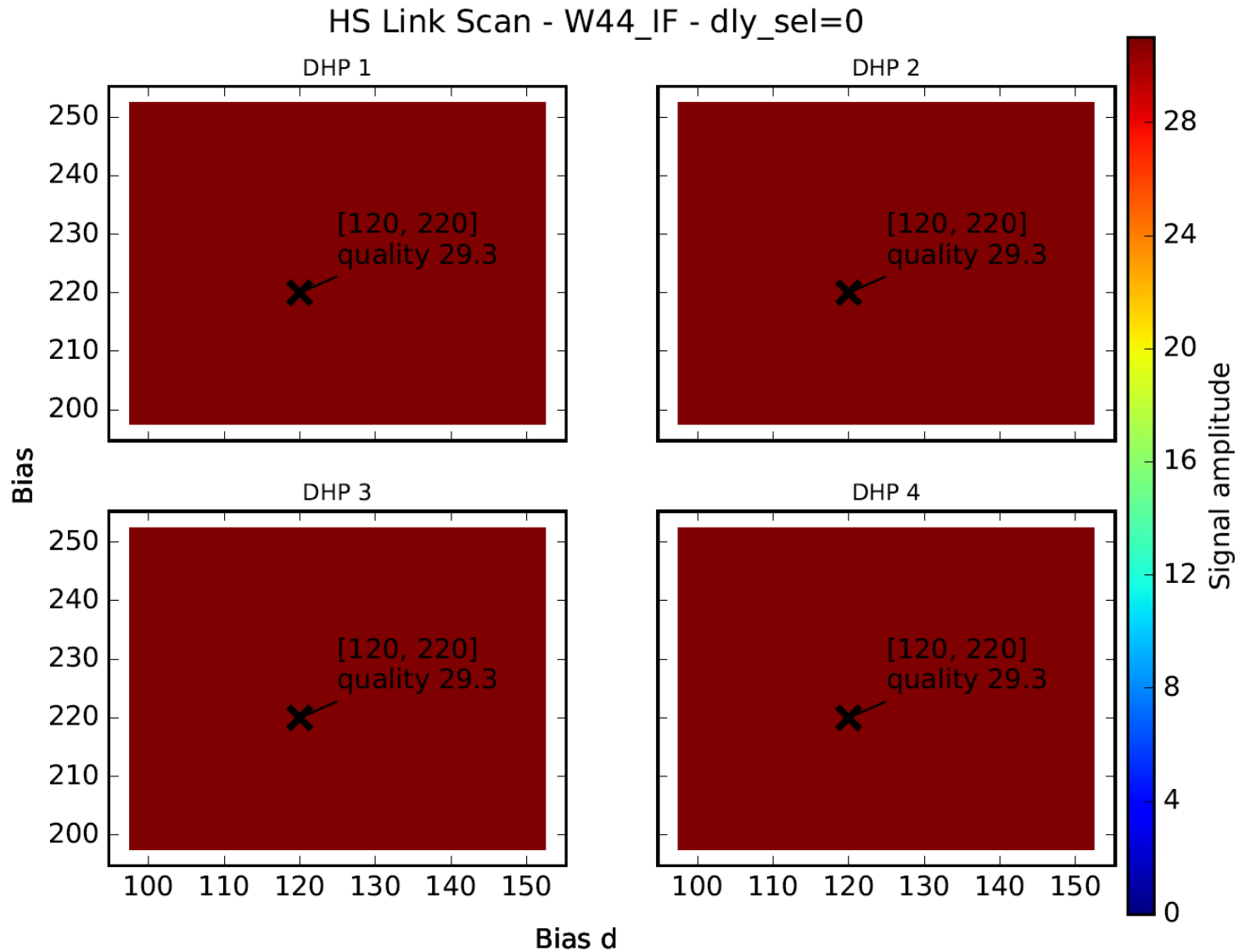




# W44\_IF

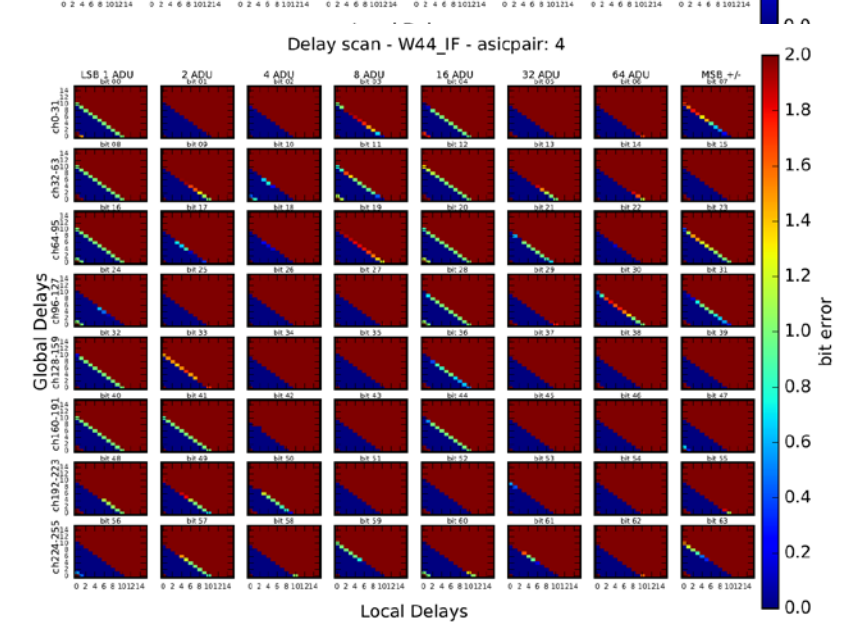
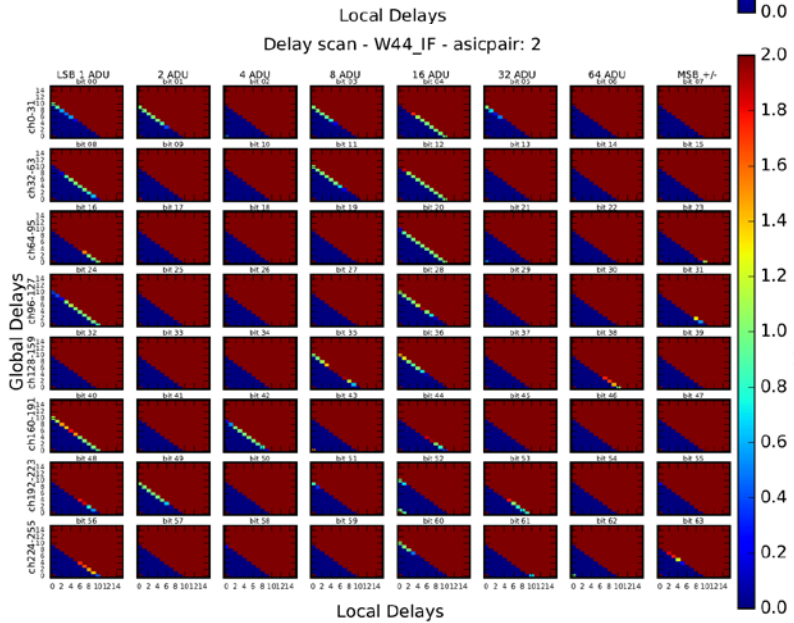
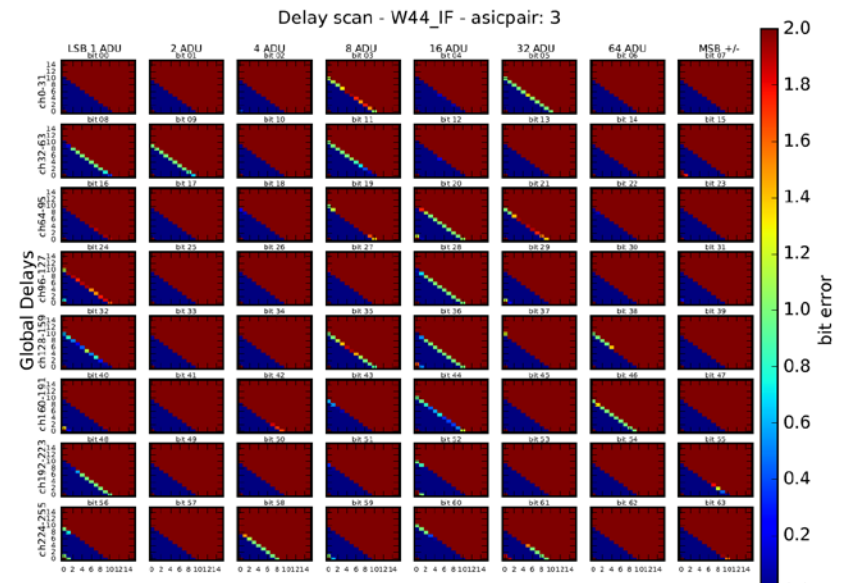
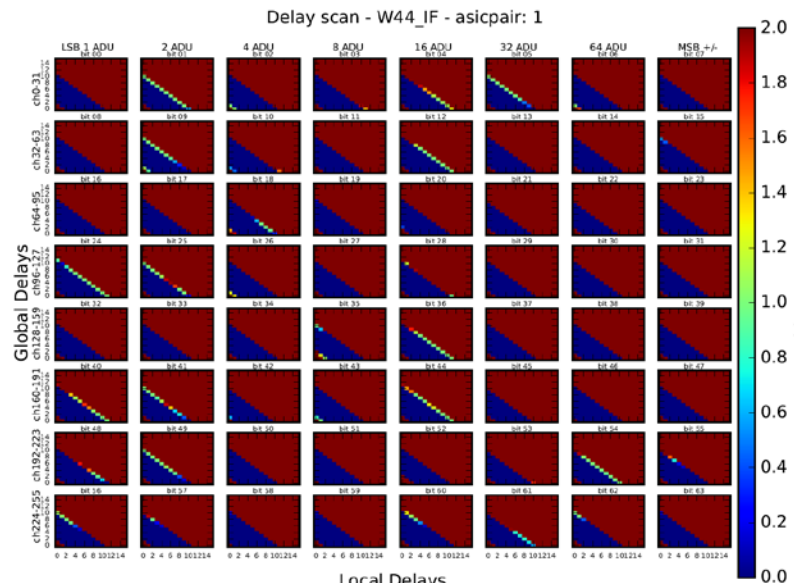


# W44\_IF – HS links



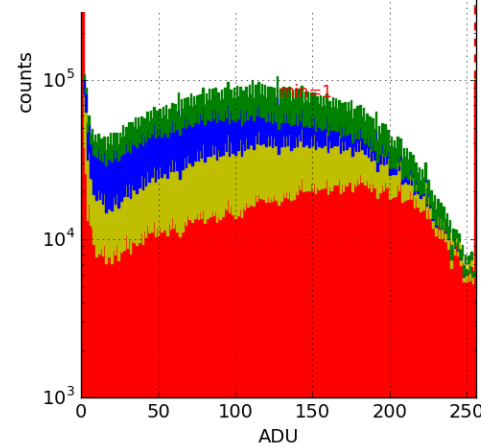
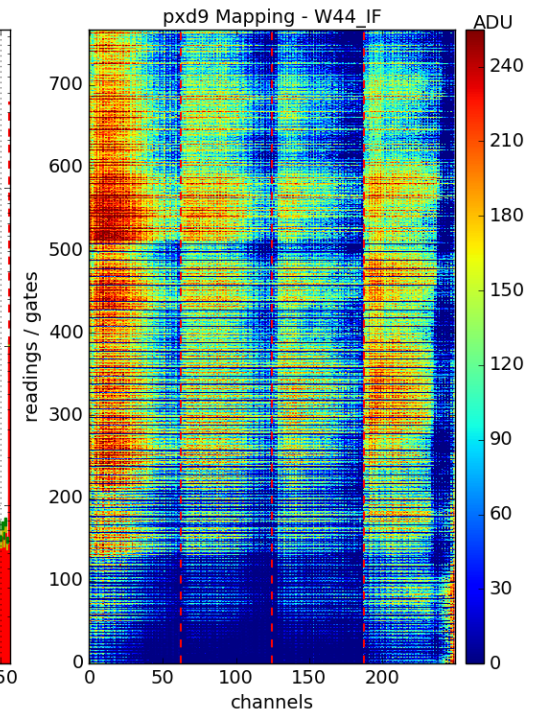
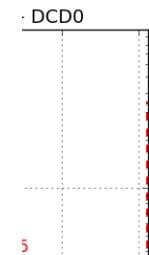
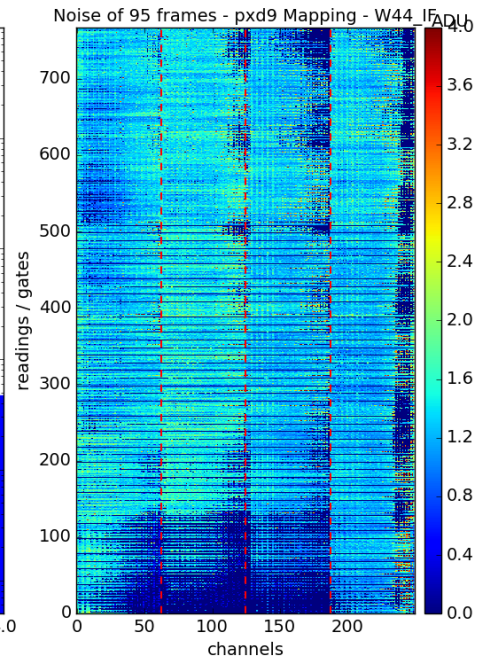
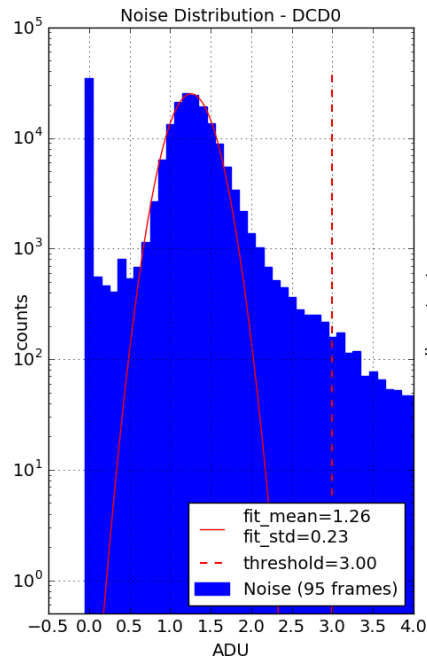


# W44\_IF – delays



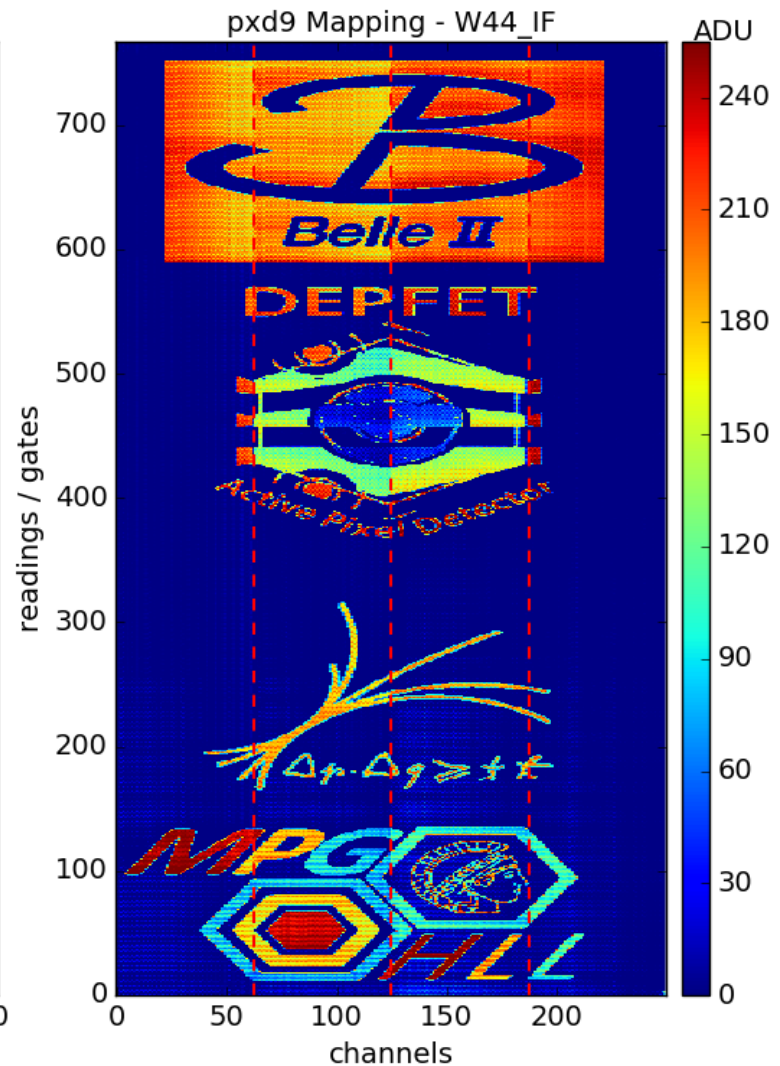
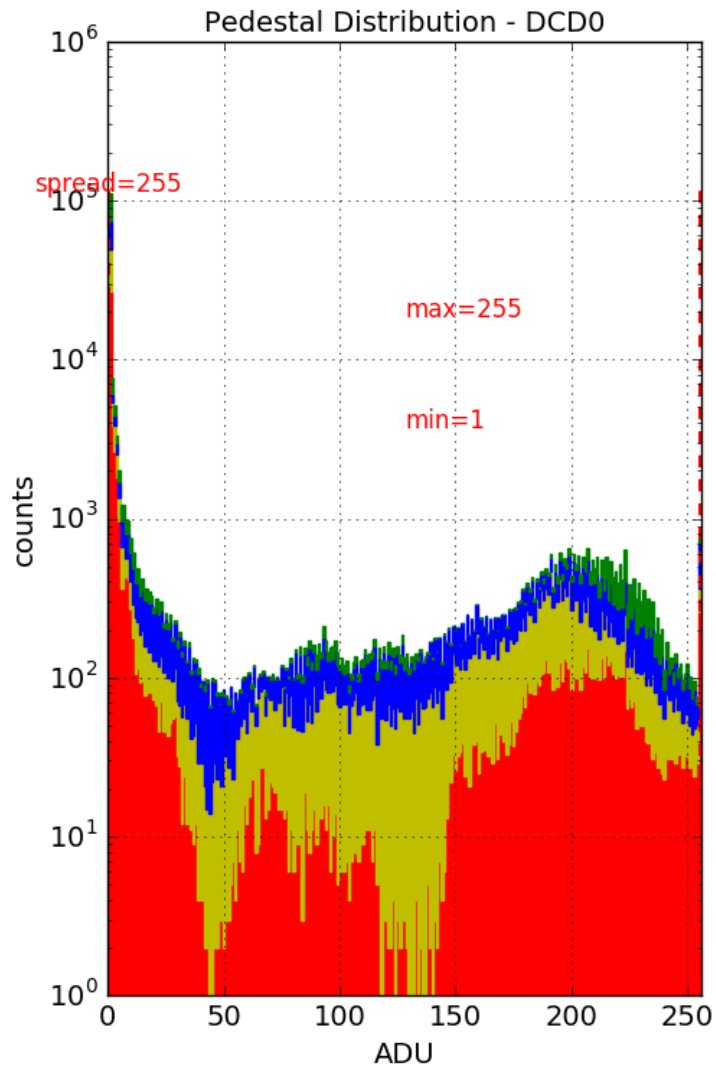


# W44\_IF – pedestals without offsets, without ACMC





# W44\_IF – offset delays





# W44\_IF – pedestals with offsets, without APMC

to do





# W44\_IF – pedestals with offsets, with ACMC

to do



# Backup



# Module checks before glueing - **Issues**

- **DHPT high speed (HS) Links**

short scan (to have a reference for later) ✓

- bias 200 to 250, step 5
- bias\_d 100 to 150, step 5
- delay 0

- **Delays** ✓

problem with crowded root partition during analysis. Problem still remains

- **ADCs optimization using small parameter space**

- **Pedestal/noise (1k frames)** not defined what to analyse – compare etc?

- **Sampling Point Curve** – missing: verification of the Switcher sequence in DHP memory

- **2-bit offset (delay and current source optimization)** coding guidelines missing but working

- **Pedestal/noise (1k frames)** - same as above

- **DCD analog common mode correction (ACMC)** ✓

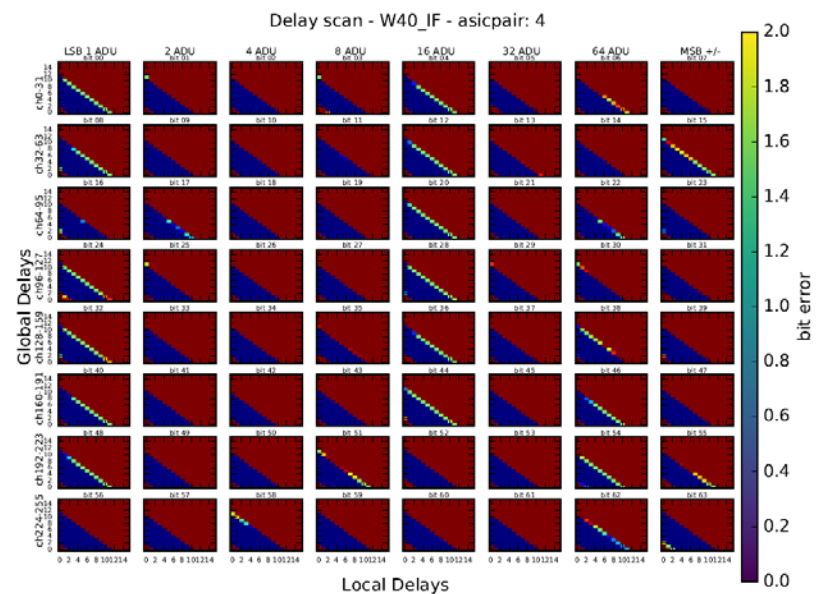
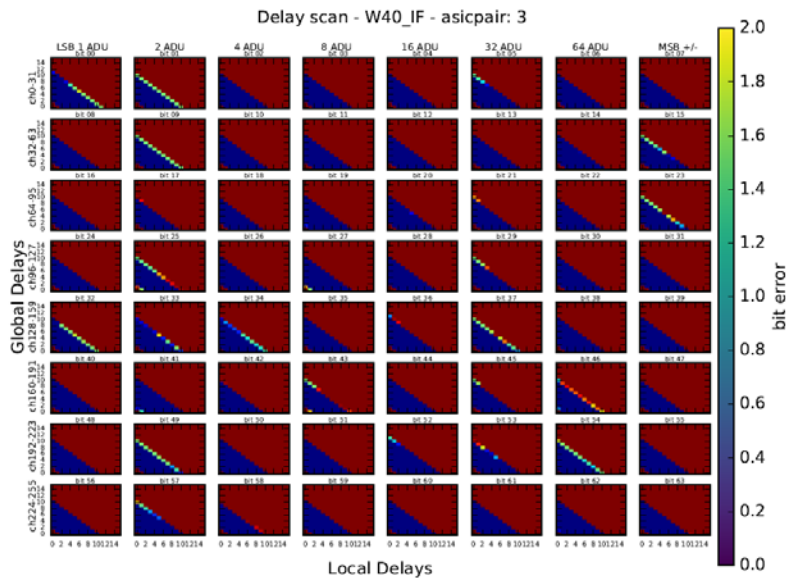
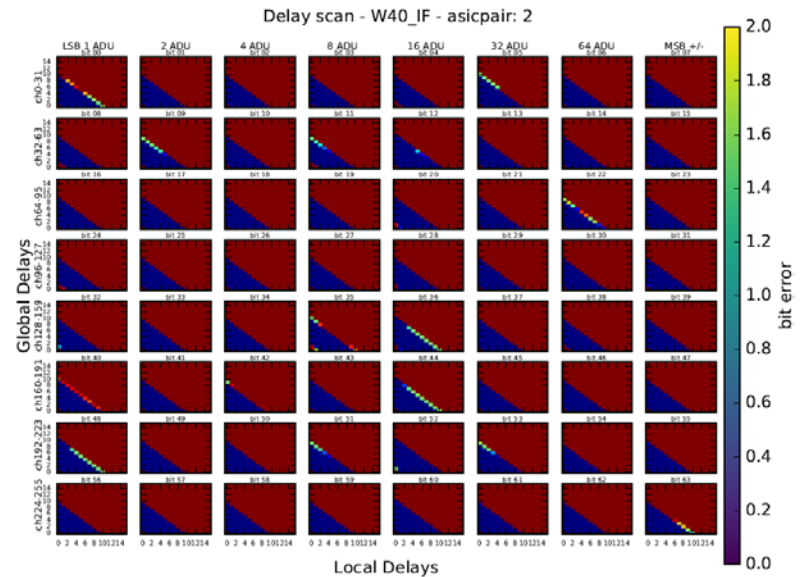
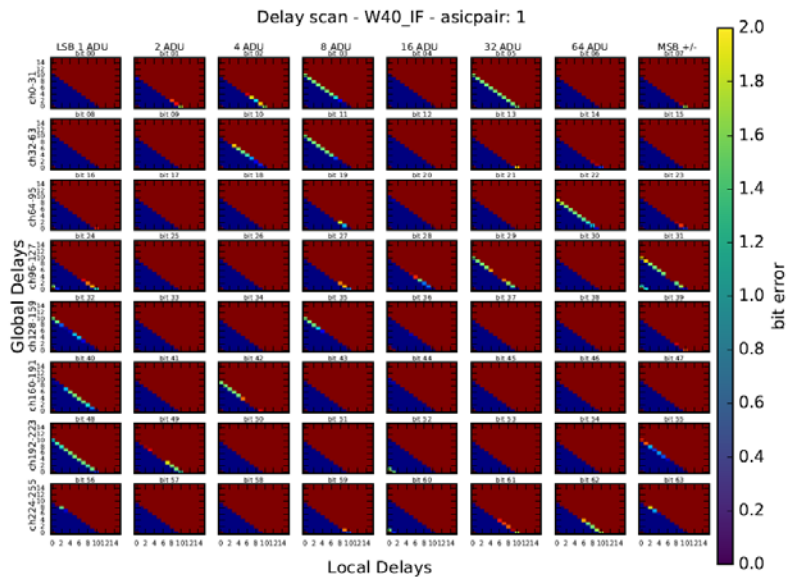
- **Pedestal/noise (1k frames)** - same as above

- **Source measurement different regions** – working but extremely slow (is the stepper implemented)

- Threshold 5
- Verify shape of the spectra
- SNR in different regions
- Adjust VNSubIn / Use ACMC



# W40\_IF – delays





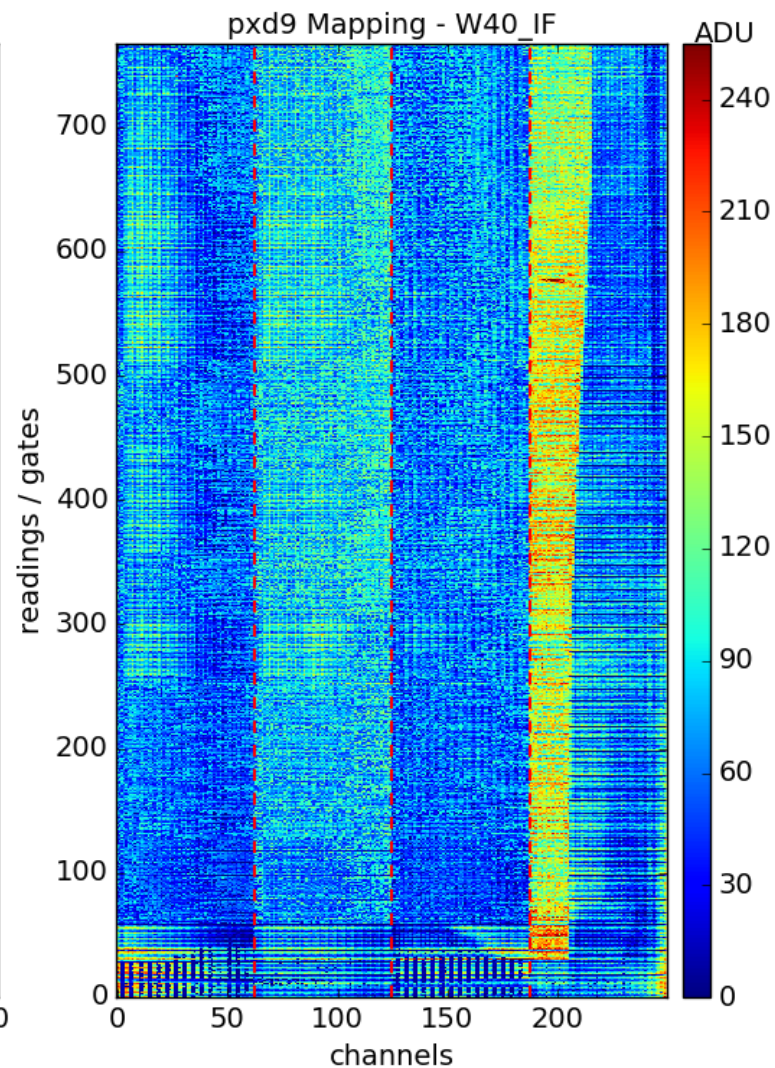
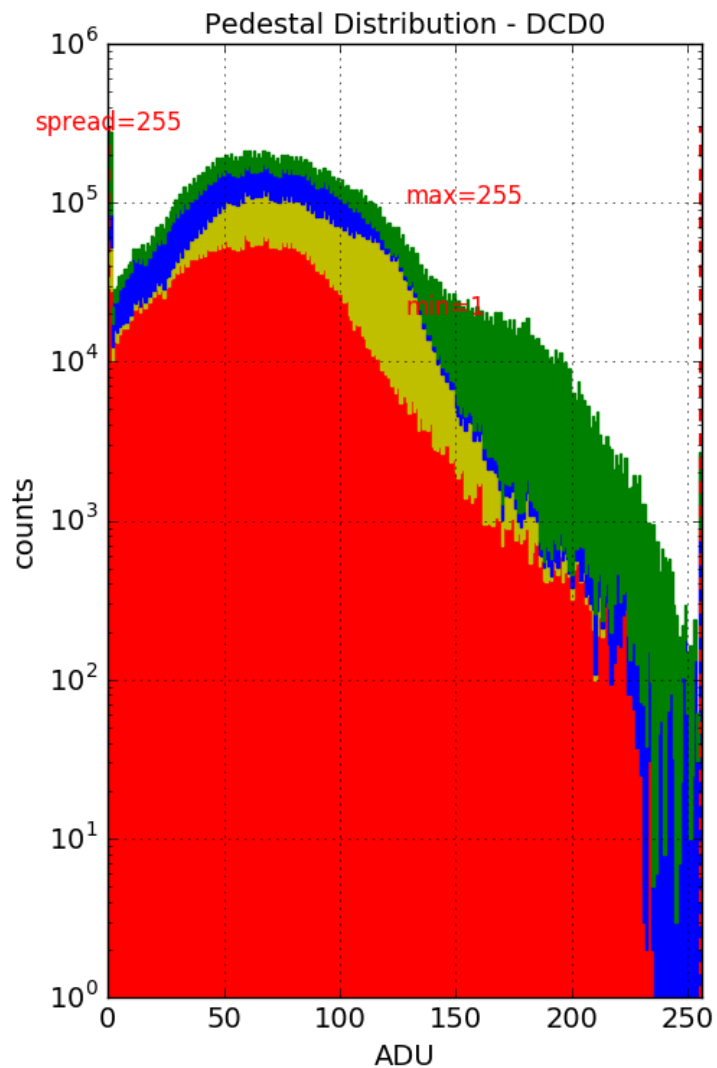
# W40\_IF – ADC curves

Measurements done, analysis missing

Problem with analysis

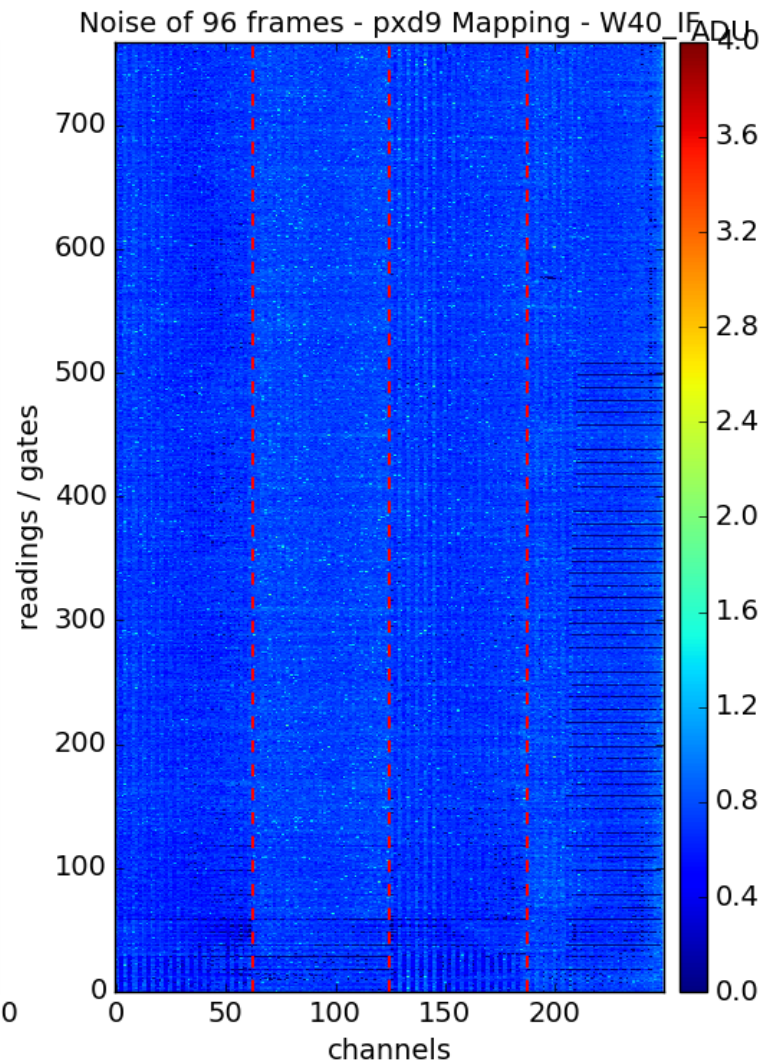
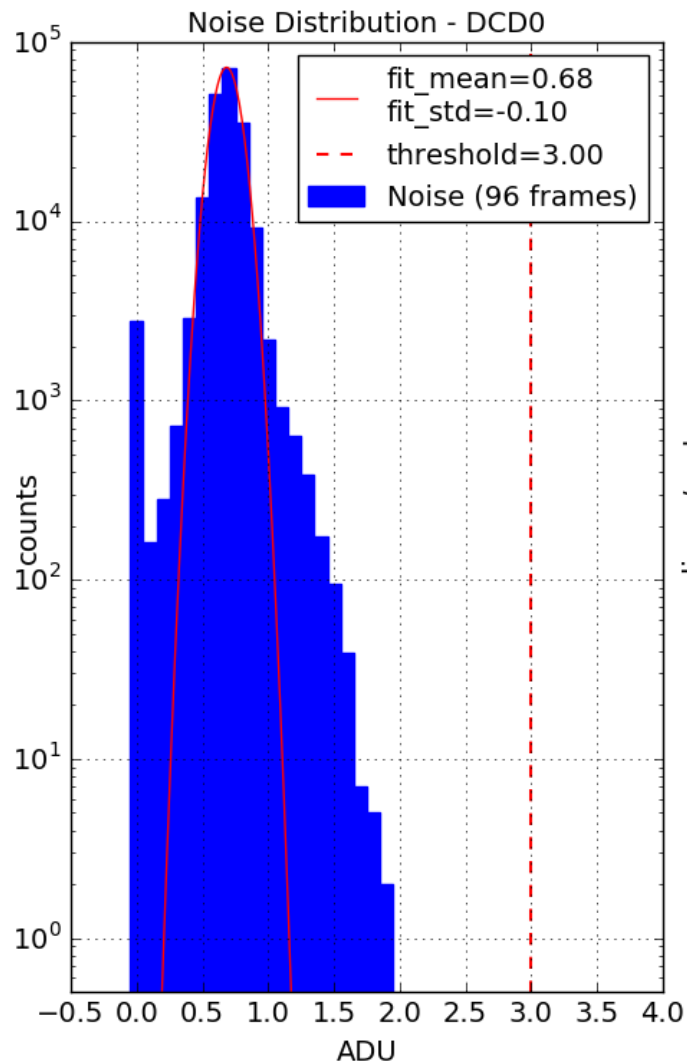


# W40\_IF – pedestals – with Offsets and ACMC





# W40\_IF – noise – with Offsets and ACMC





# W40\_OF – source measurements

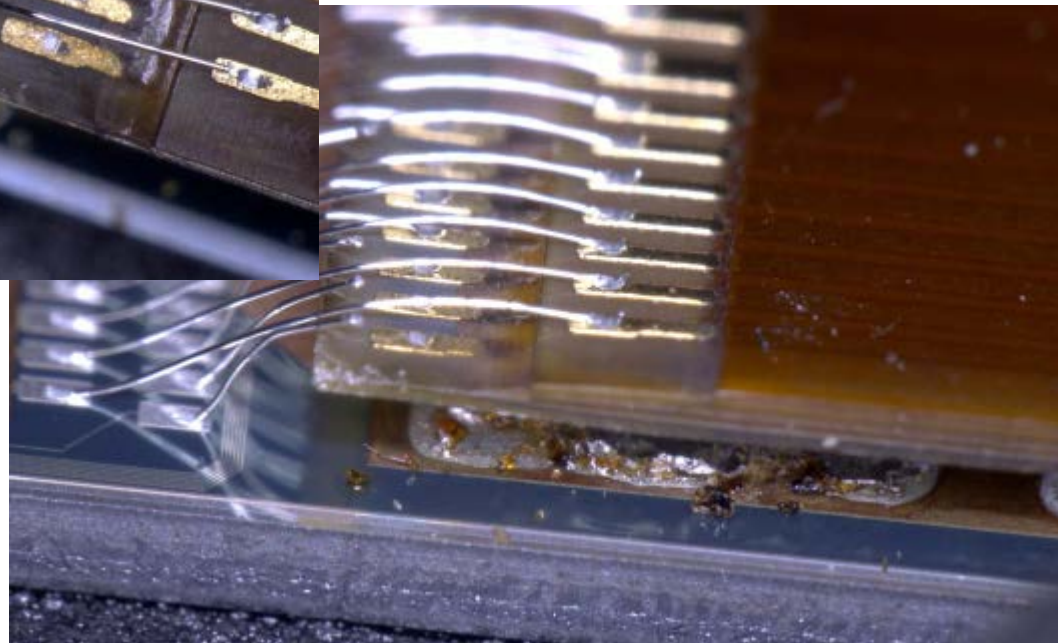
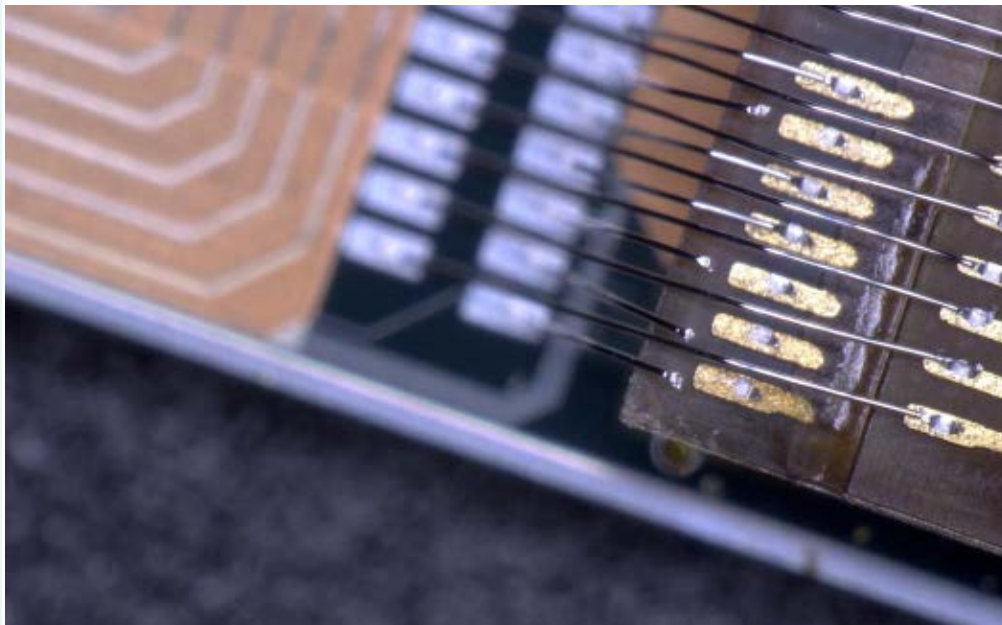
/pxdtest8/W40\_IF/source/2017\_08\_07

Name
..
run001_nosource
run002_nosource
run003_nosource_dcmc_threshold5_ped25_cm20
run004_nosource_no-dcmc_threshold5
run005_source_threshold5_hv60_drift4
run006_source_threshold5_hv60_drift5
run007_source_threshold5_hv60_drift6
run008_source_threshold5_hv64_drift4
run009_source_threshold5_hv64_drift5
run010_source_threshold5_hv64_drift6
run011_source_threshold5_hv68_drift4
run012_source_threshold5_hv68_drift5
run013_source_threshold5_hv68_drift6
run014_source_threshold5_hv72_drift4
run015_source_threshold5_hv72_drift5
run016_source_threshold5_hv72_drift6
run017_source_threshold5_hv56_drift4
run018_source_threshold5_hv56_drift5
run019_source_threshold5_hv56_drift6
run020_source_threshold5_hv56_drift6_pos1
run021_source_threshold5_hv56_drift6_pos0
run022_source_threshold5_hv56_drift6_pos3
run023_source_threshold5_hv56_drift6_pos4
run024_source_threshold5_hv56_drift6_pos5
run025_source_threshold5_hv64_drift4_painting





# W38\_IB & W40\_IF - ladder

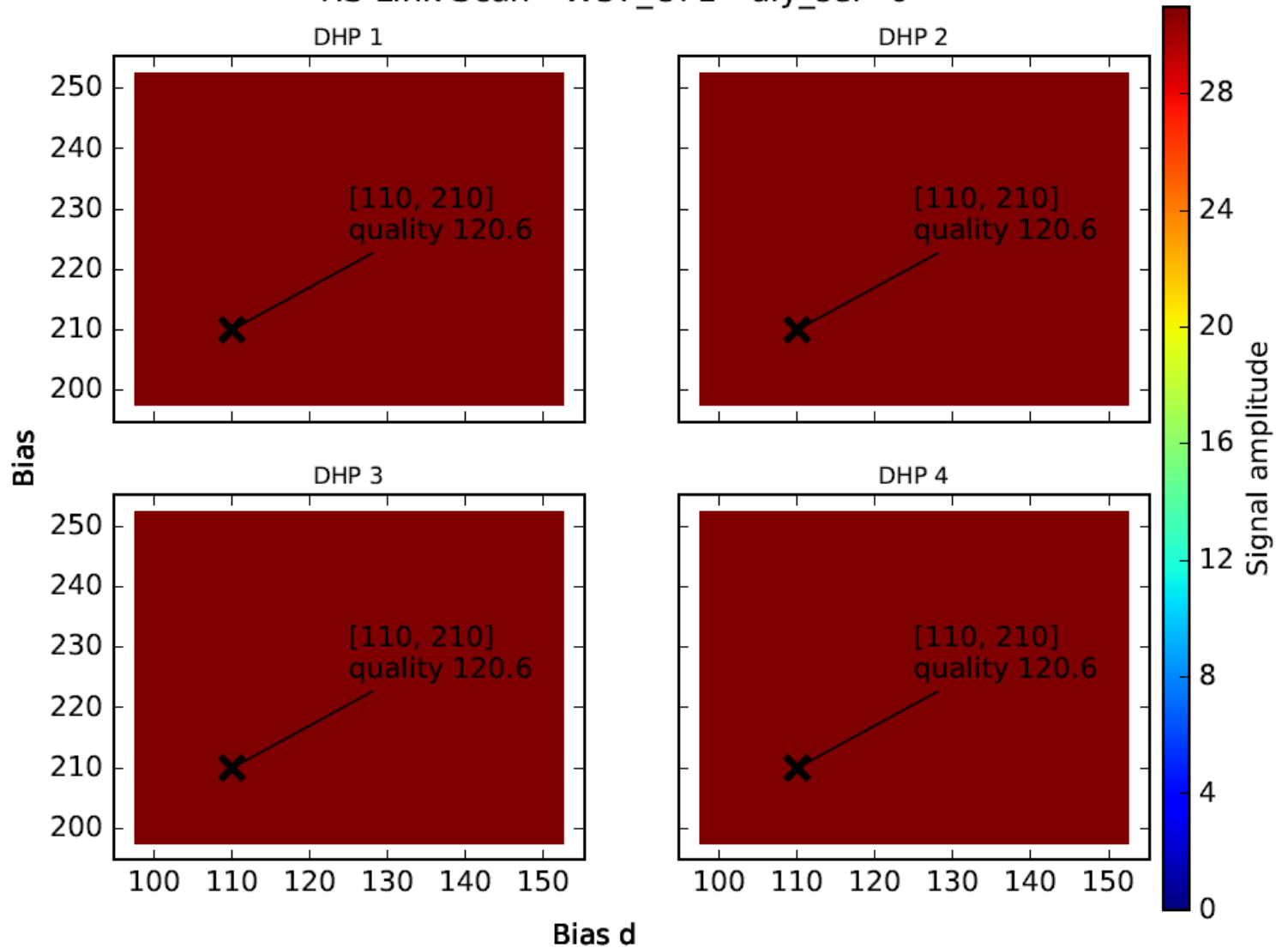


15 mA	30 mA	-4000 mV	3000 mV	3000 mV	<input checked="" type="checkbox"/>	3050 mV	3009 mV	5 mA	gate-on2
15 mA	30 mA	-4000 mV	3000 mV	3000 mV	<input checked="" type="checkbox"/>	810 mV	733 mV	16 mA	gate-on3
30 mA	30 mA	0 mV	3000 mV	6000 mV	<input checked="" type="checkbox"/>	3056 mV	3023 mV	10 mA	gate-off
120 mA	150 mA	0 mV	6000 mV	7000 mV	<input checked="" type="checkbox"/>	7238 mV	6002 mV	24 mA	source



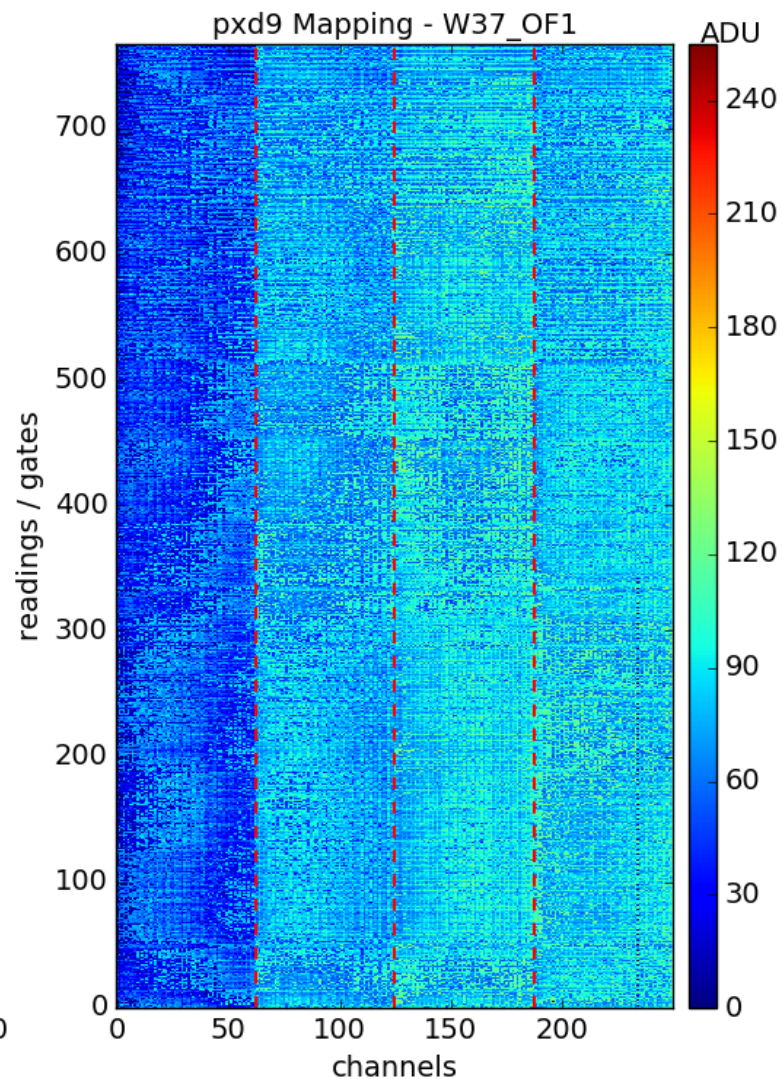
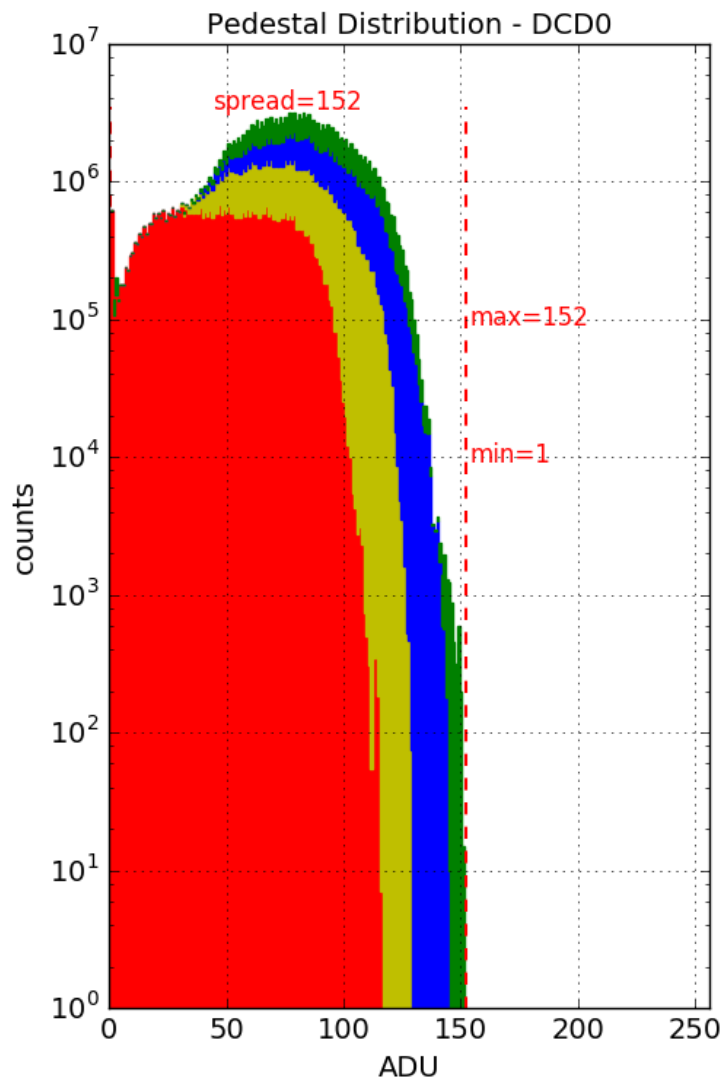
# W37\_OF1 – HS links

HS Link Scan - W37\_OF1 - dly\_sel=0



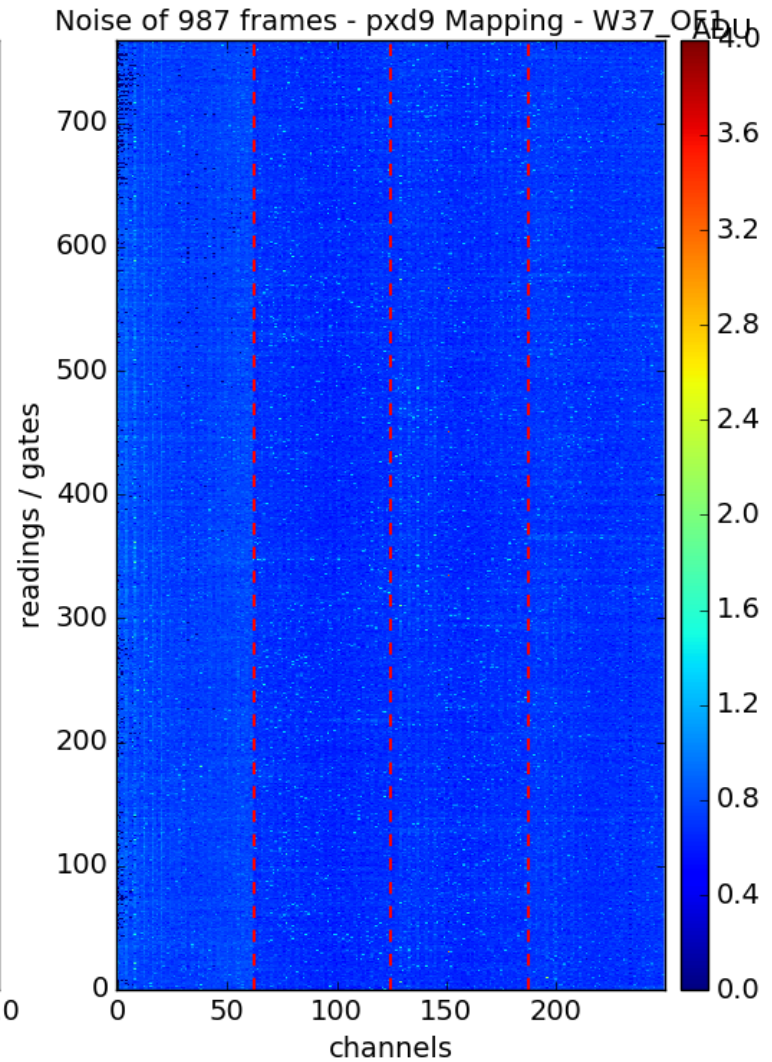
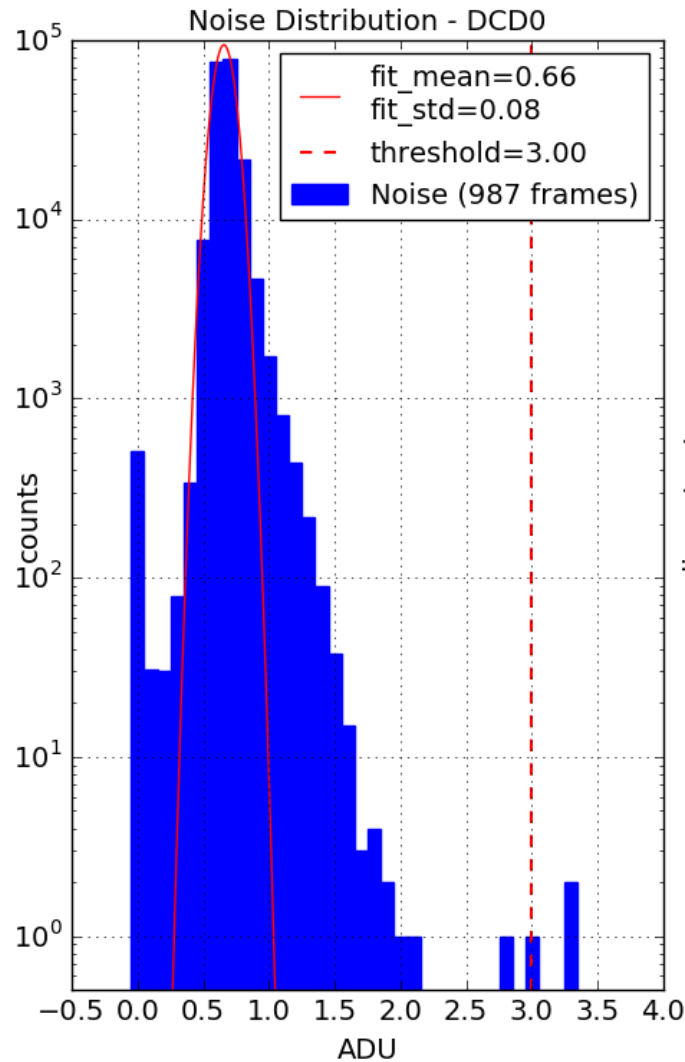


# W37\_OF1 – pedestals with ACMC and offsets



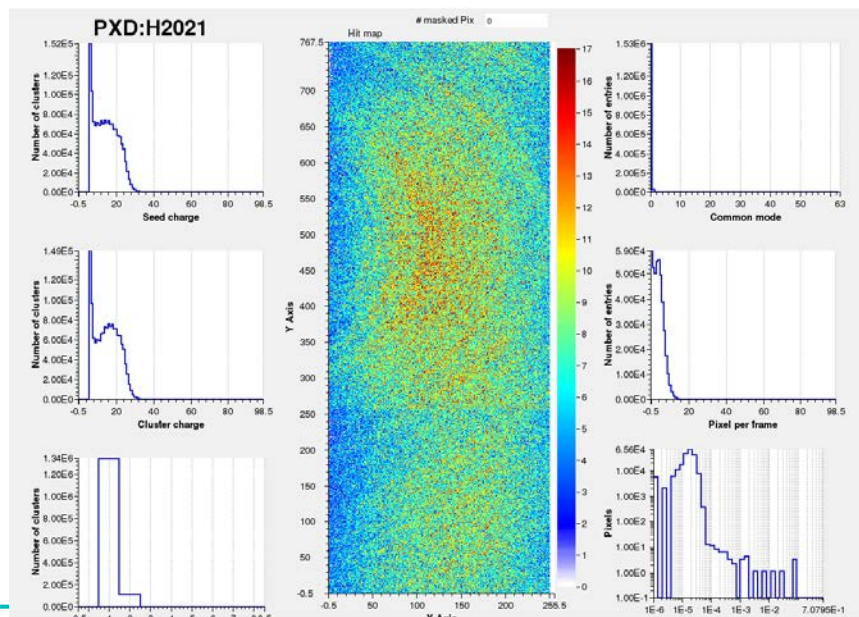
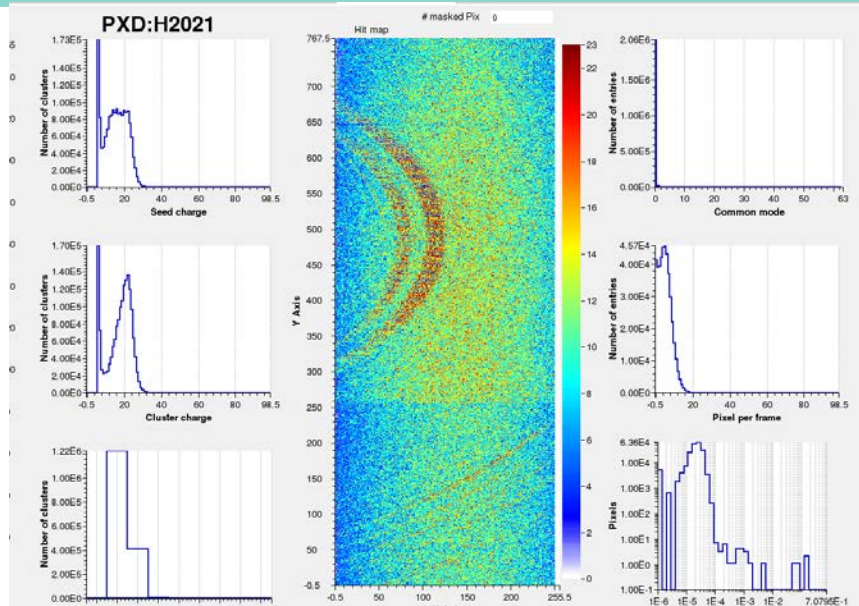


# W37\_OF1 – noise with ACMC and offsets





# W37\_OF1 – source measurements



/pdxtest8/W37\_OF1/source/2017\_08\_10\_003

Name

- drift\_-3000\_hv\_-60000
- drift\_-3000\_hv\_-62000
- drift\_-3000\_hv\_-64000
- drift\_-3000\_hv\_-66000
- drift\_-3000\_hv\_-68000
- drift\_-3000\_hv\_-70000
- drift\_-3000\_hv\_-72000
- drift\_-3000\_hv\_-74000
- drift\_-3000\_hv\_-76000
- drift\_-3000\_hv\_-78000
- drift\_-3000\_hv\_-80000
- drift\_-4000\_hv\_-60000
- drift\_-4000\_hv\_-62000
- drift\_-4000\_hv\_-64000
- drift\_-4000\_hv\_-66000
- drift\_-4000\_hv\_-68000
- drift\_-4000\_hv\_-70000
- drift\_-4000\_hv\_-72000
- drift\_-4000\_hv\_-74000
- drift\_-4000\_hv\_-76000
- drift\_-4000\_hv\_-78000
- drift\_-4000\_hv\_-80000
- drift\_-5000\_hv\_-60000
- drift\_-5000\_hv\_-62000
- drift\_-5000\_hv\_-64000
- drift\_-5000\_hv\_-66000
- drift\_-5000\_hv\_-68000
- drift\_-5000\_hv\_-70000
- drift\_-5000\_hv\_-72000
- drift\_-5000\_hv\_-74000
- drift\_-5000\_hv\_-76000
- drift\_-5000\_hv\_-78000
- drift\_-5000\_hv\_-80000

/pdxtest8/W37\_OF1/source/2017\_08\_10\_003

Name

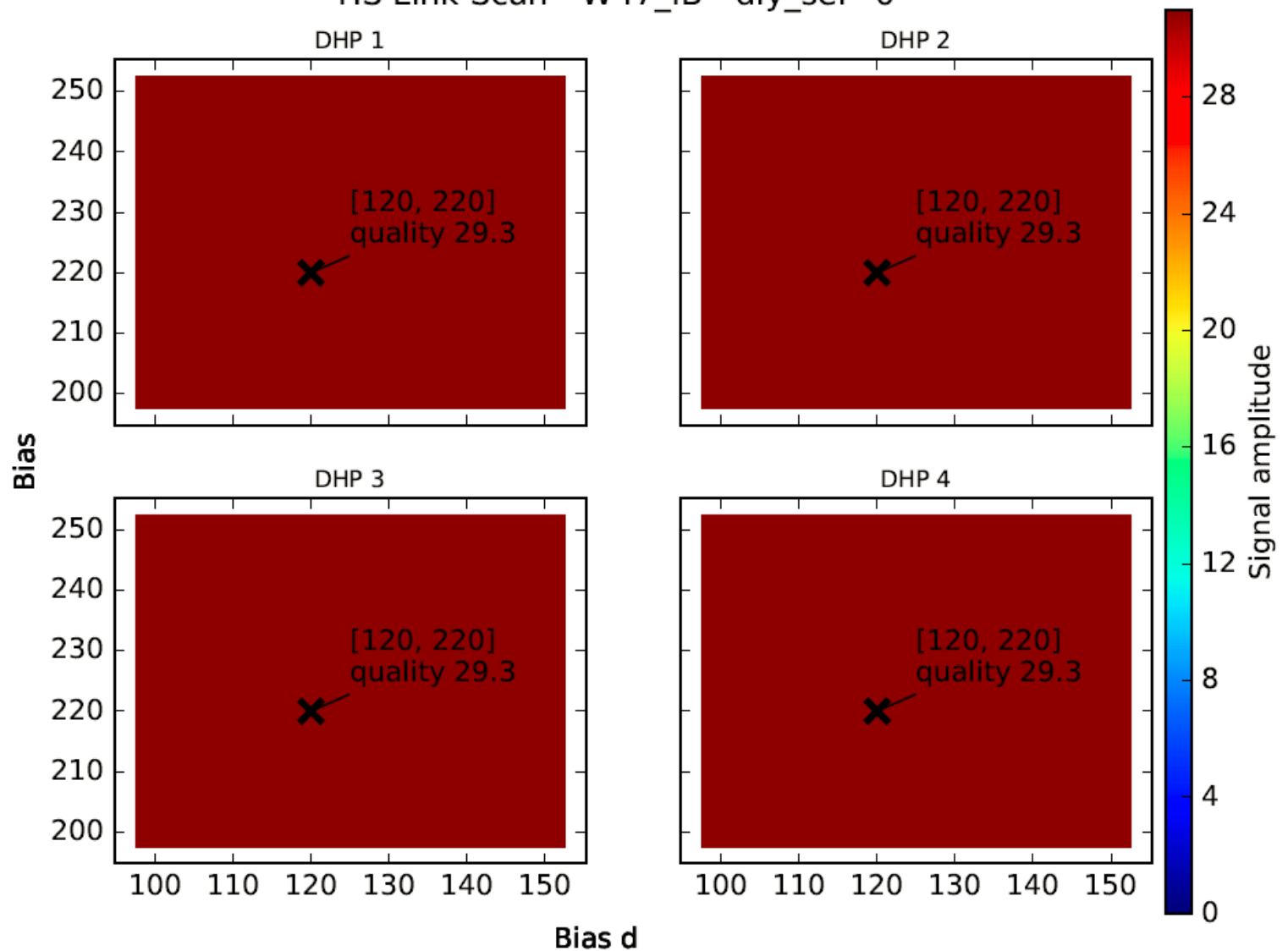
- drift\_-5000\_hv\_-78000
- drift\_-5000\_hv\_-80000
- drift\_-6000\_hv\_-60000
- drift\_-6000\_hv\_-62000
- drift\_-6000\_hv\_-64000
- drift\_-6000\_hv\_-66000
- drift\_-6000\_hv\_-68000
- drift\_-6000\_hv\_-70000
- drift\_-6000\_hv\_-72000
- drift\_-6000\_hv\_-74000
- drift\_-6000\_hv\_-76000
- drift\_-6000\_hv\_-78000
- drift\_-6000\_hv\_-80000

see talk by Harrison



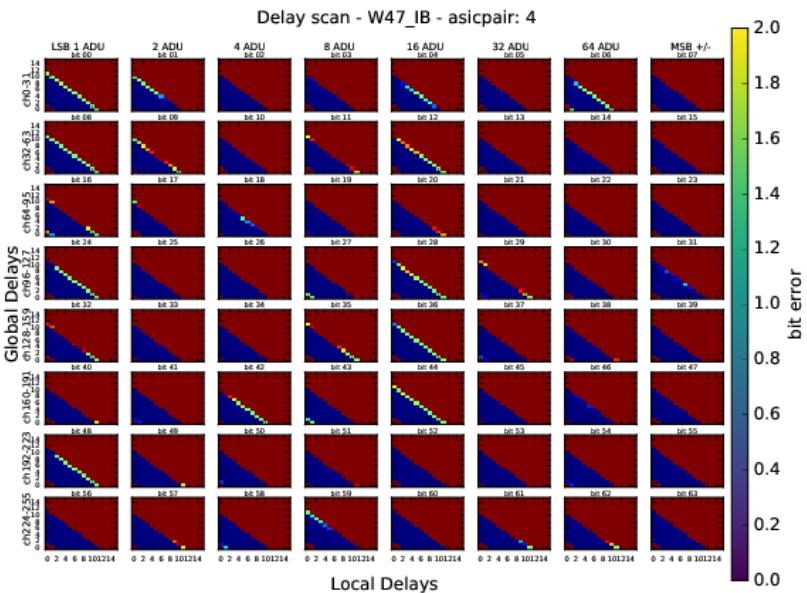
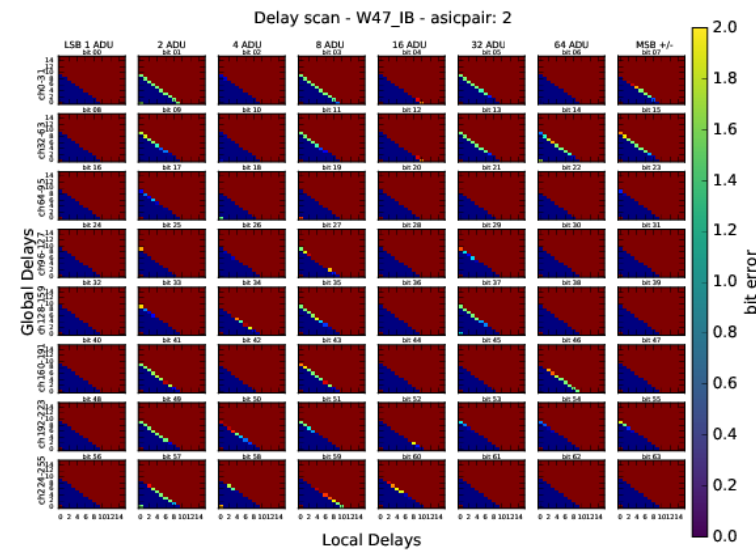
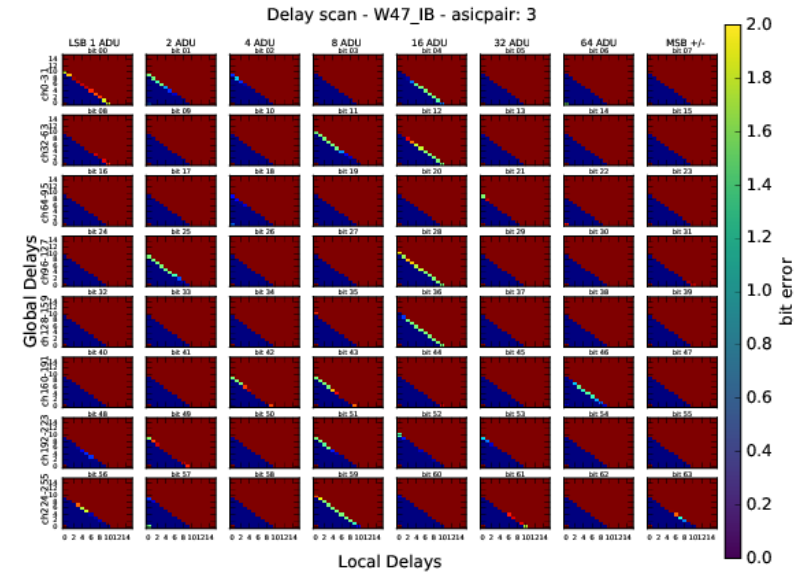
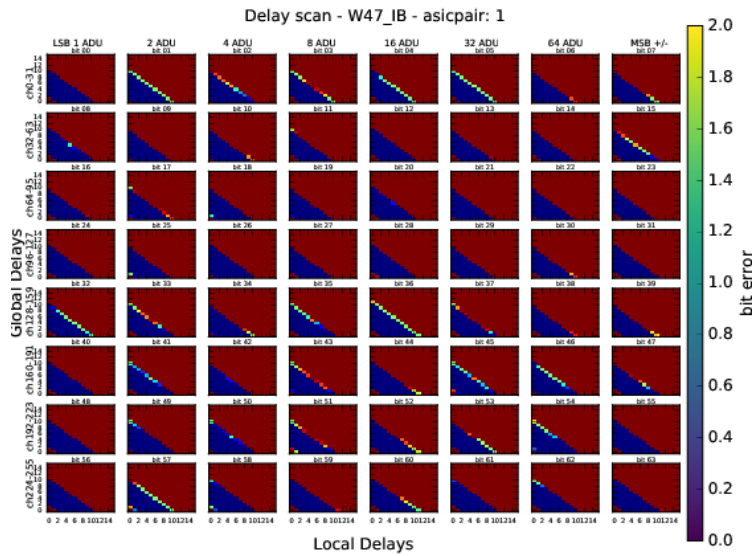
# W47\_IB – HS link

HS Link Scan - W47\_IB - dly\_sel=0



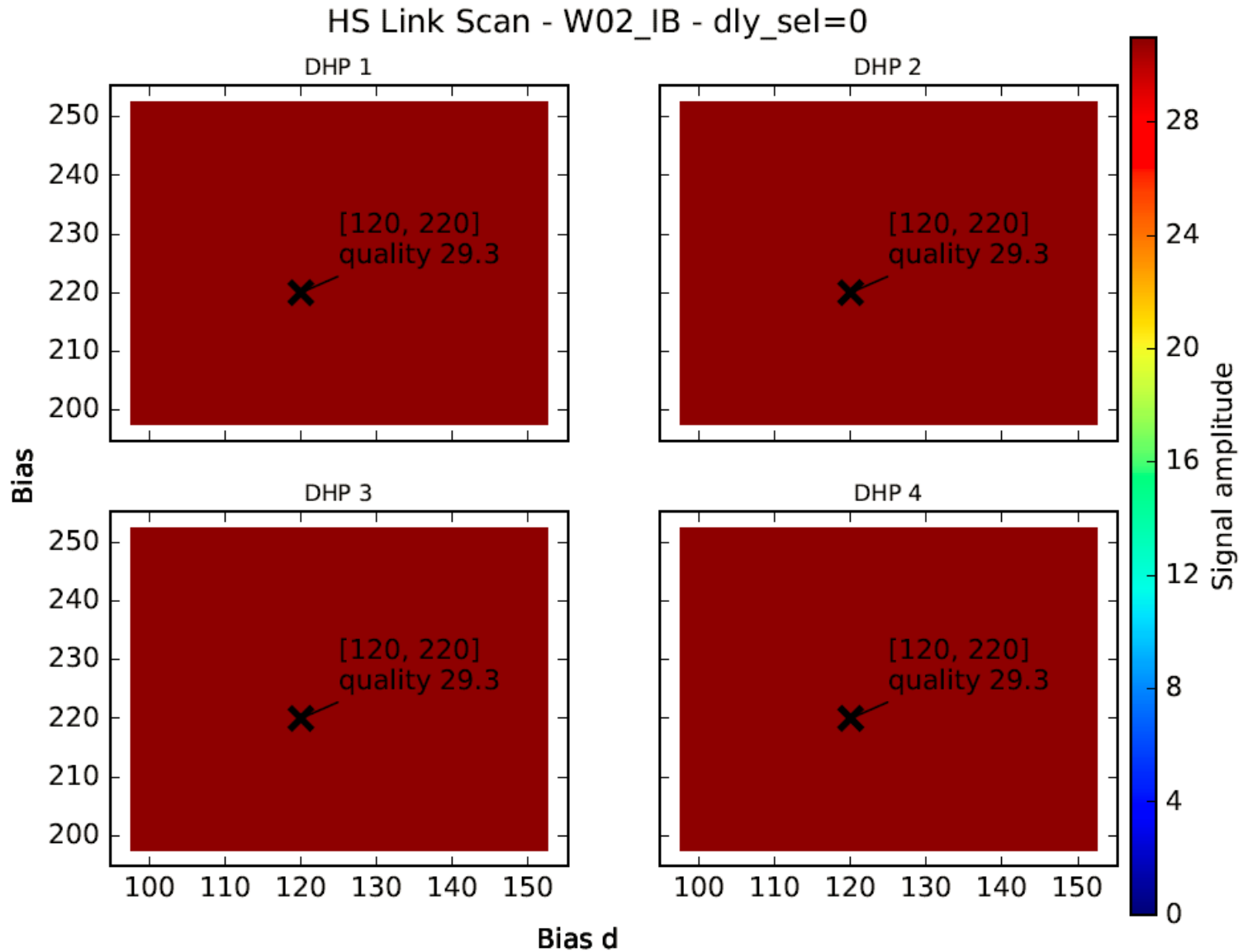


# W47\_IB – delays





# W02\_IB – HS link

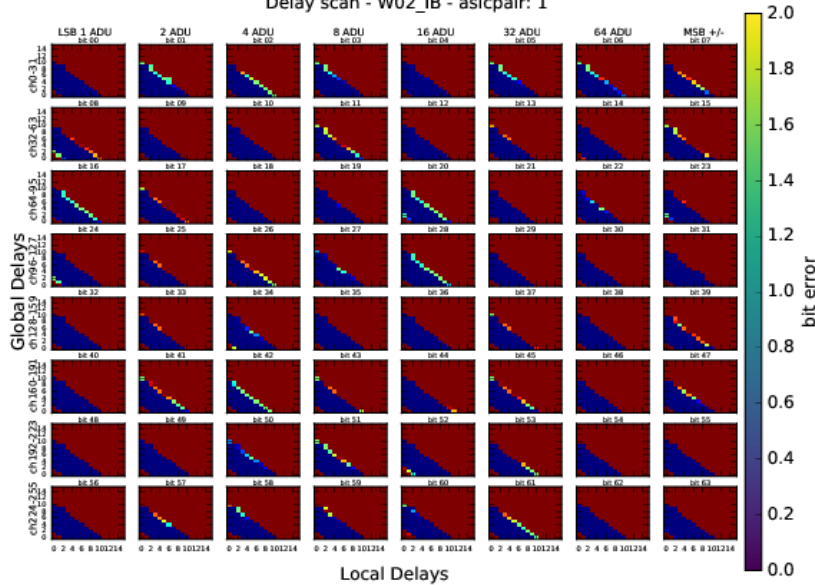




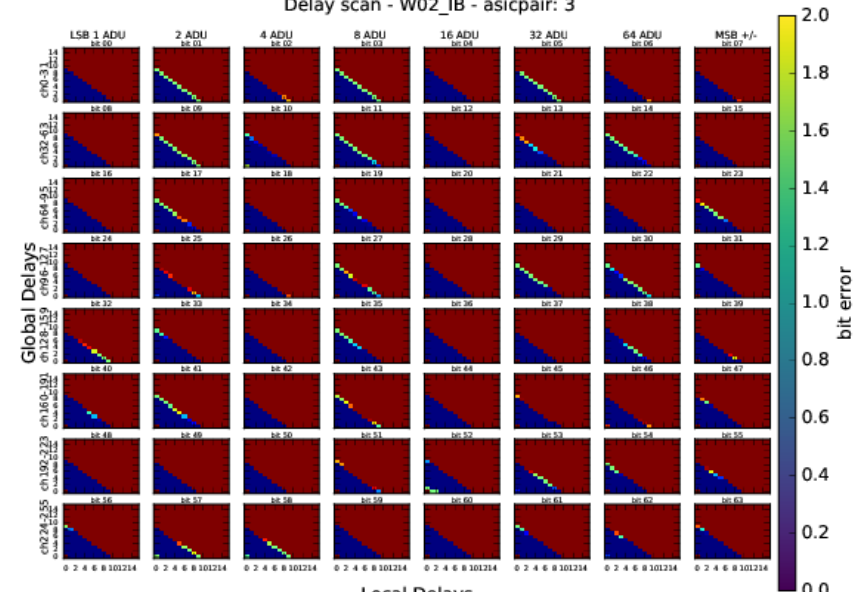


# W02\_IB – delays

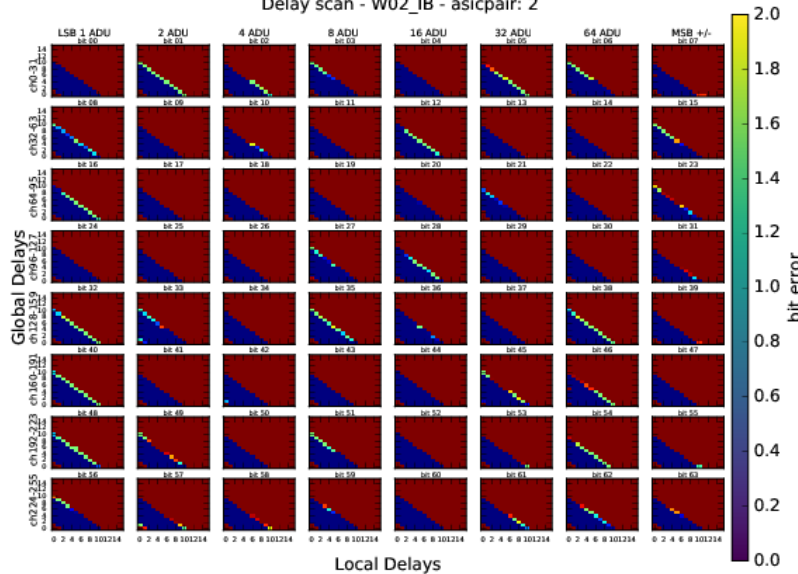
Delay scan - W02\_IB - asicpair: 1



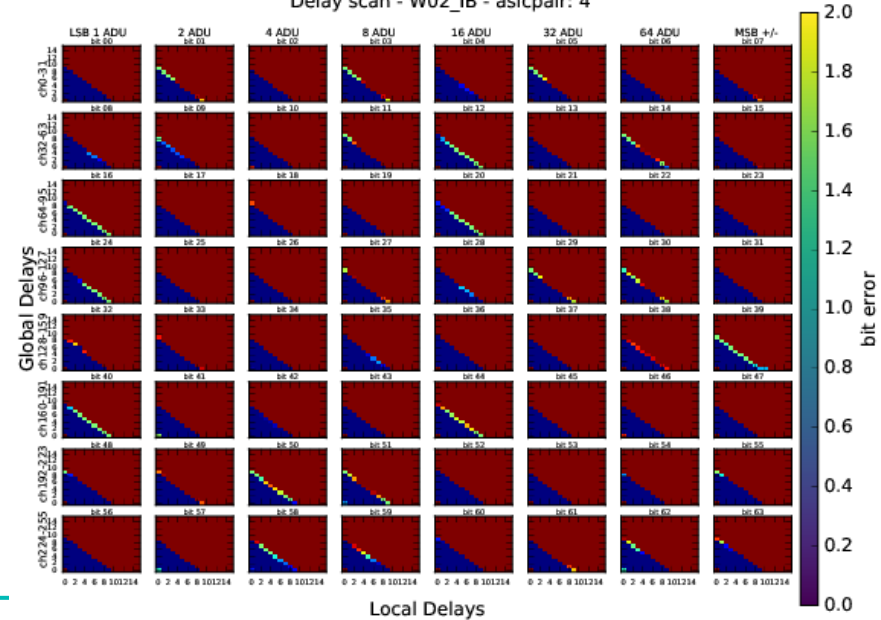
Delay scan - W02\_IB - asicpair: 3



Delay scan - W02\_IB - asicpair: 2



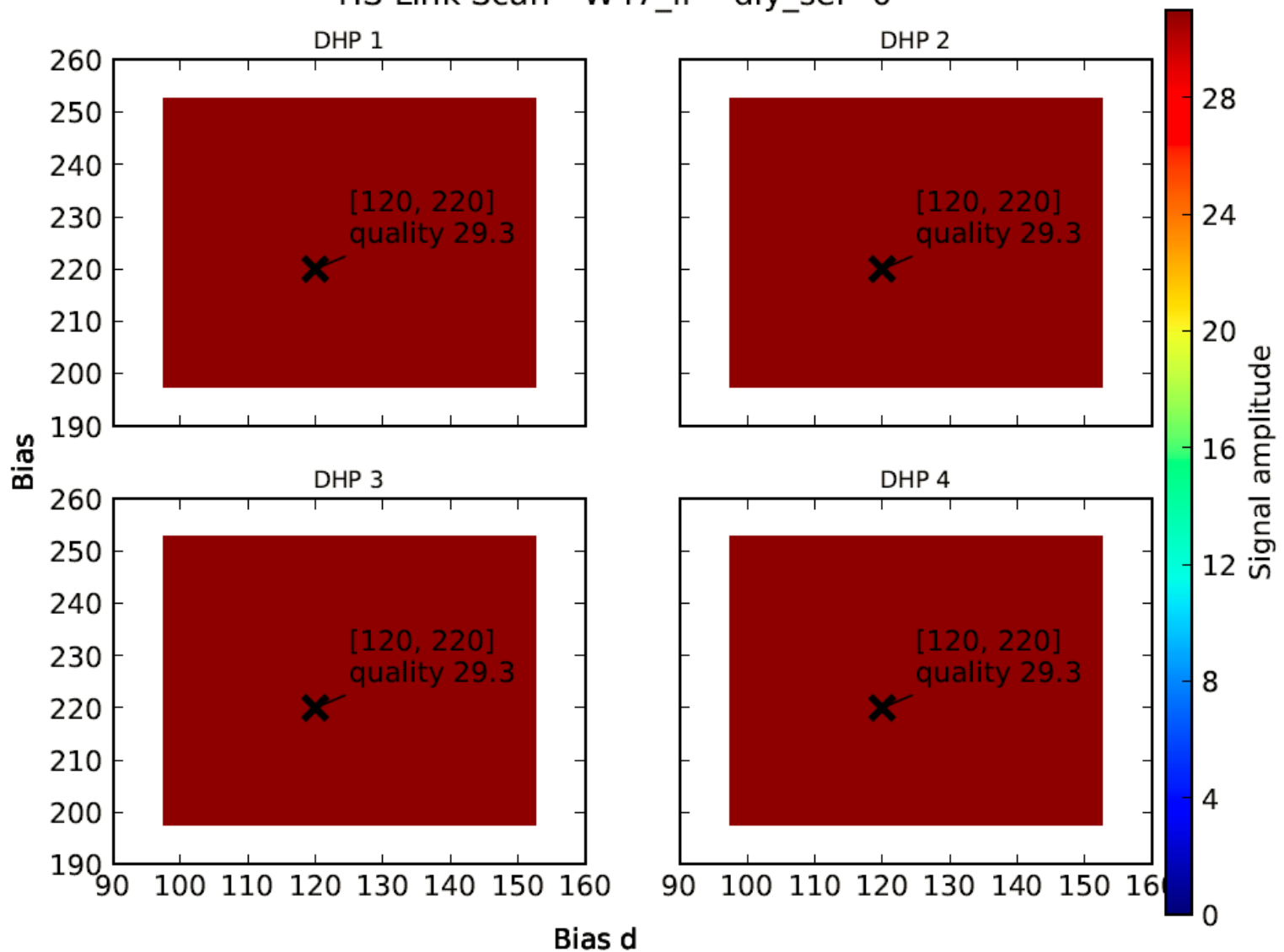
Delay scan - W02\_IB - asicpair: 4





# W47\_IF – HS link

HS Link Scan - W47\_IF - dly\_sel=0





# W47\_IF – delays

