

Temperatures of Modules during Testing

Philipp Leitl
phleitl@mpp.mpg.de

Max Planck Institute for Physics

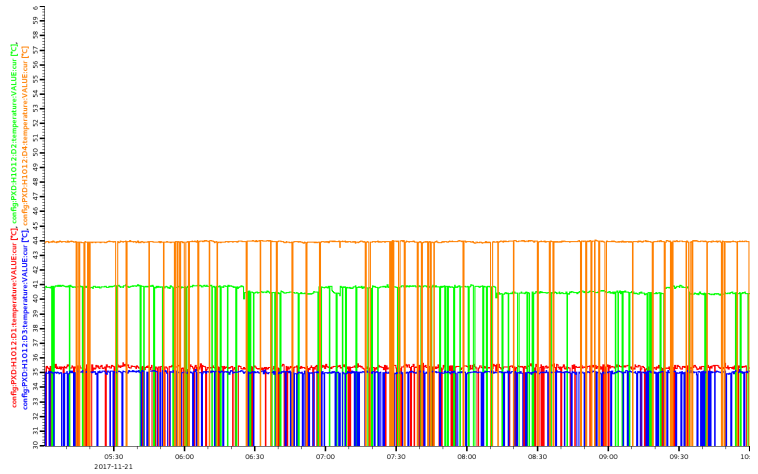
2017-11-22



Max-Planck-Institut für Physik
(Werner-Heisenberg-Institut)



- module fully powered
- on base jig
- chiller: water
set point: 15 °C
flowing back: 16.7 °C
- fixation:
clamp and vacuum





- module fully powered
- on base jig
- chiller: water
set point: 15 °C
flowing back: 16.7 °C
- fixation:
clamp and vacuum

