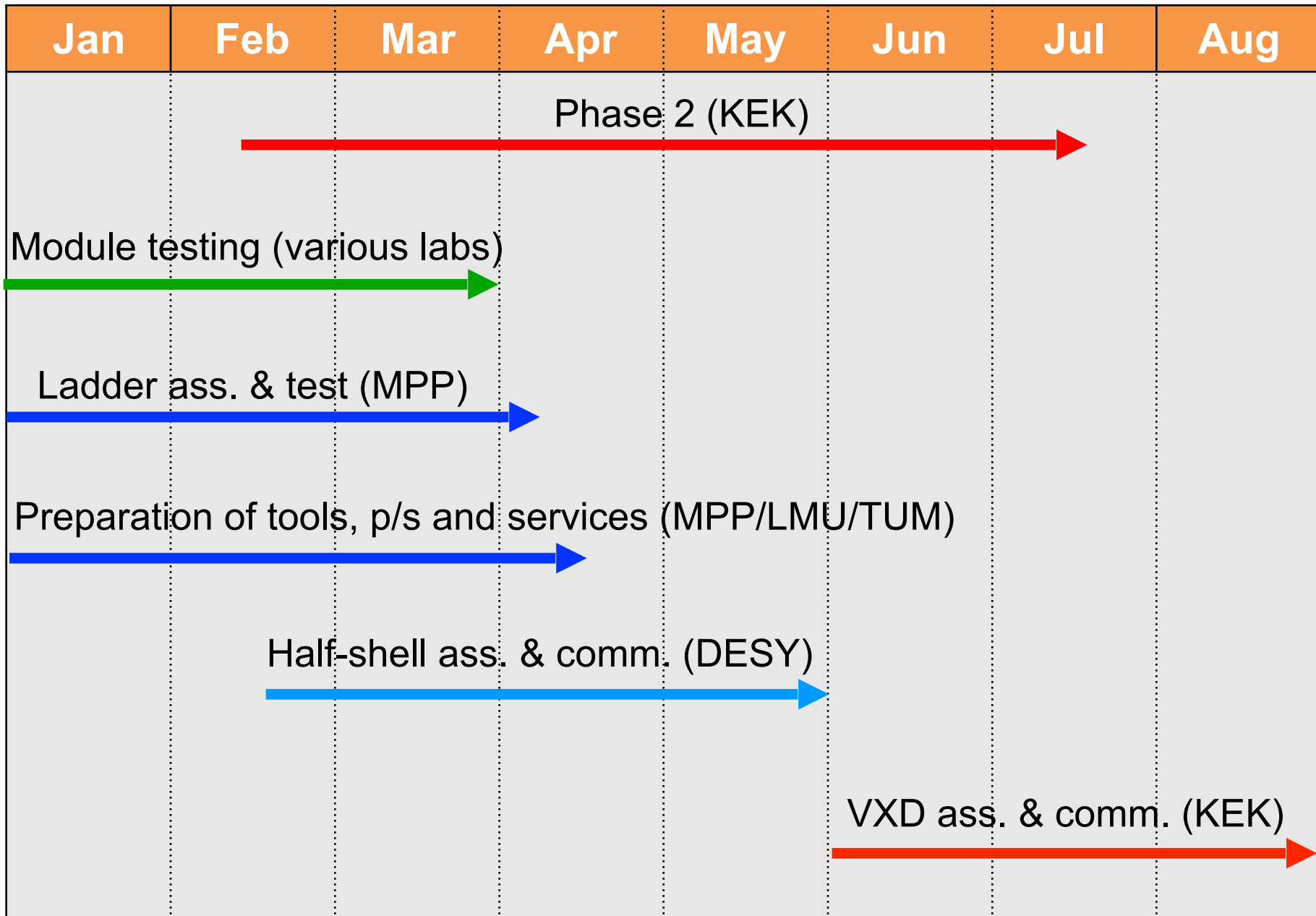
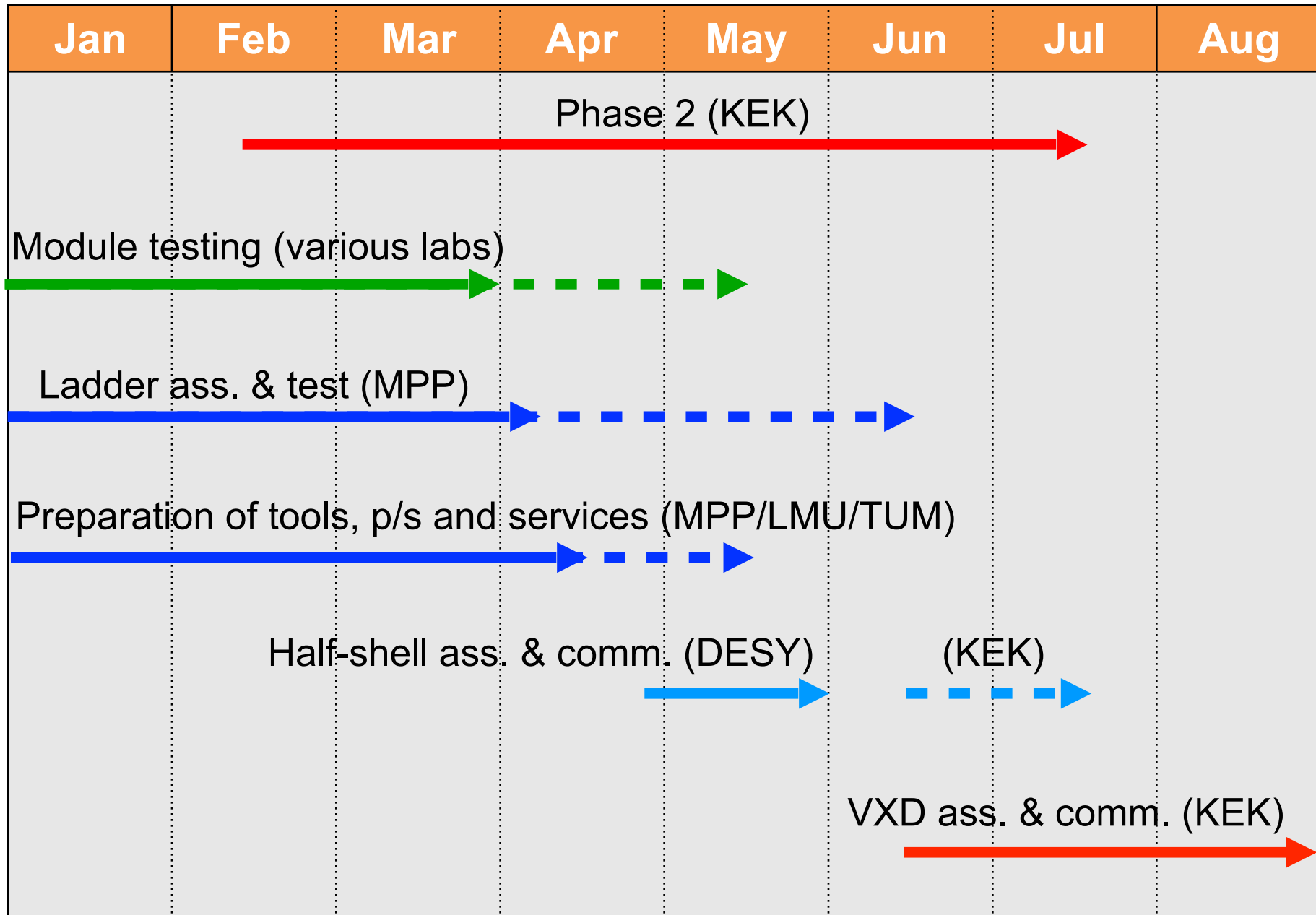


# IB Issues

- Installation Scenarios
- PXD Responsibilities at KEK





# PXD Installation Scenarios

---

**A:** have both L1 half shells at KEK by mid June and install all L2 ladders there

- availability of technicians and of clean working space at KEK

**A':** have both L1 half shells at KEK by mid June with some L2 ladders already mounted. Rest to be installed at KEK

- availability of technicians and of clean working space at KEK

**A'':** in case we can't solve the L2 glueing issue in time: install L2 modules

- availability of technicians and of clean working space at KEK
- unclear impact on performance (acceptance, alignment, vibrations etc.)

**B:** send only one L1 half shell to KEK by mid June and continue to work on second half shell in Germany

- need test equipment in Germany and at KEK at the same time
- + more flexible, can work in parallel, easier access to technicians

**C:** finish both half shells in Germany and arrive at KEK a few weeks later

- impact on schedule
- + availability of technicians
- + better ability to react to unforeseen problems

**Z:** de-scoping scenario: install PXD L1 only

- significant performance degradation: need to quantify with MC study!
- very bad for our reputation; unclear when next chance to install L2
- + gain time, more relaxed space requirements → installation less demanding

# Implications on Schedule

## Phase 3 installation schedule v1.2 (K.Gadow): compatible with start in February 2019

<https://confluence.desy.de/display/BI/VXD+WebHome#VXDWebHome-Installationschedule>

Month	Apr			May					Jun				Jul				Aug					Sep				Oct				Nov					Dec																	
Calendar Week	15	16	17	18	19	20	21	22	23	24	25	26	27	28	29	30	31	32	33	34	35	36	37	38	39	40	41	42	43	44	45	46	47	48	49	50	51	52														
Belle II																																																				
BEAST II removal																																																				
CDC repair																																																				
Outer cable installation																																																				
VXD installation																																																				
VXD system test																																																				
Move QCS in & close RVC																																																				





# Tentative Planning of Expert Coverage at KEK

cw	February				March					April					May					June				July				August					September				October				November				December			
	5	6	7	8	9	10	11	12	13	14	15	16	17	18	19	20	21	22	23	24	25	26	27	28	29	30	31	32	33	34	35	36	37	38	39	40	41	42	43	44	45	46	47	48	49	50	51	52
Felix (MPP)	Orange				Orange					Orange					Orange					Orange				Orange					Orange				Orange				Orange				Orange							
Philipp L.	Orange				Orange					Orange					Orange					Orange				Orange					Orange				Orange				Orange				Orange							
Hendrik	Orange				Orange					Orange					Orange					Orange				Orange					Orange				Orange				Orange				Orange							
Martin	Orange				Orange					Orange					Orange					Orange				Orange					Orange				Orange				Orange				Orange							
Christian Ko.	Orange				Orange					Orange					Orange					Orange				Orange					Orange				Orange				Orange				Orange							
Botho	Orange				Orange					Orange					Orange					Orange				Orange					Orange				Orange				Orange				Orange							
Florian	Orange				Orange					Orange					Orange					Orange				Orange					Orange				Orange				Orange				Orange							
Carlos	Orange				Orange					Orange					Orange					Orange				Orange					Orange				Orange				Orange				Orange							
Philipp W.	Orange				Orange					Orange					Orange					Orange				Orange					Orange				Orange				Orange				Orange							
Harrison	Orange				Orange					Orange					Orange					Orange				Orange					Orange				Orange				Orange				Orange							
Benjamin	Orange				Orange					Orange					Orange					Orange				Orange					Orange				Orange				Orange				Orange							
Hua	Orange				Orange					Orange					Orange					Orange				Orange					Orange				Orange				Orange				Orange							
Felix (DESY)	Orange				Orange					Orange					Orange					Orange				Orange					Orange				Orange				Orange				Orange							
Miguel-Angel	Orange				Orange					Orange					Orange					Orange				Orange					Orange				Orange				Orange				Orange							
Björn	Orange				Orange					Orange					Orange					Orange				Orange					Orange				Orange				Orange				Orange							
Pablo	Orange				Orange					Orange					Orange					Orange				Orange					Orange				Orange				Orange				Orange							
main focus	Characterization				DESY					KEK					KEK				KEK					KEK				KEK				KEK				KEK				KEK								
Activities @ KEK	Phase 2				Injections					Collisions?					Install and commission PXD in B4 clean room				add SVD					VXD commissioning				Installation of outer cables				VXD installation				VXD test												

- Must include technicians
- Have to stay flexible
- Work out details
  - Can L2 ladders be mounted on the beam pipe?
  - How can we use ARICH clean room?
  - What are the test procedures?
  - What preparations are needed?



# PXD Responsibilities at KEK

- Carlos did a great job as „PXD Installation and Commissioning Leader“ for phase 2
  - assisted by highly motivated and hard working students
- After assuming new responsibilities as deputy run coordinator in February he will not be able to continue in his previous role for phase 3
- Also the task profile will change for phase 3. Therefore we propose a split of responsibilities:
  - **Operations Leader** (DAQ, SC, DQM, performance studies, ...)
  - **Commissioning Leader** (activities in clean room, module operation, commissioning, ...)
- Both jobs require experienced, well integrated and widely accepted person
- Operation Leader should be nominated before start of phase 2 luminosity data taking
  - proposal to appoint **Björn Spruck** for this important task
    - ▶ he already is part of the „extended“ CDAQ team at KEK
- Before officially appointing Commissioning Leader
  - give **Felix Müller** (MPP) the chance to establish himself at KEK
  - initially Belle II management would like to see a more experienced person in the background