

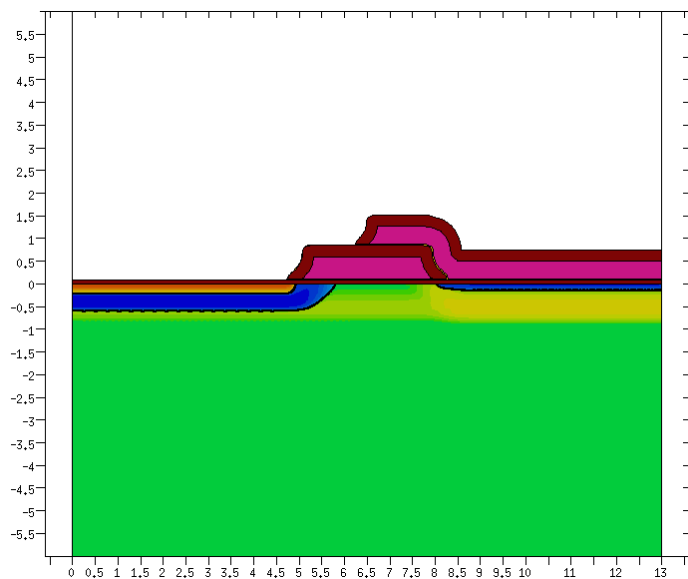
PXD Production Status

2 new production batches running time-delayed

- PXD9-20 – 7 wafers
- PXD9-21 – 12 wafers

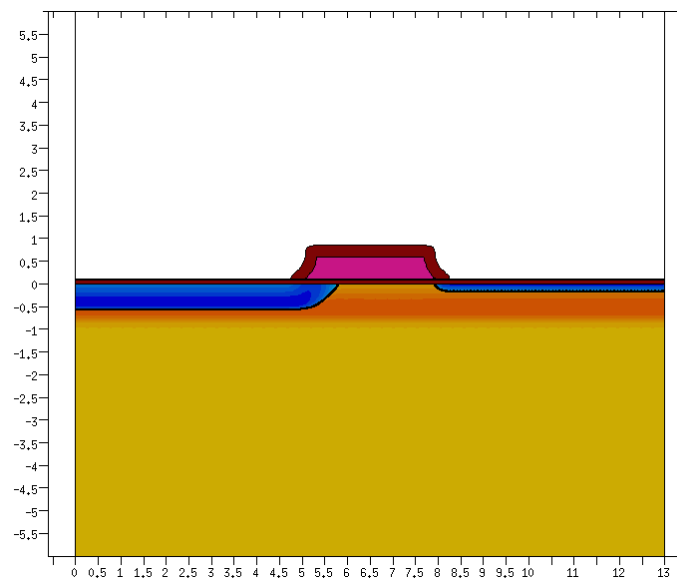
Status last October

PXD9-20



Both poly layers
and all implantations done
→ layer deposition for first
contact system

PXD9-21



first poly layer finished
→ clear implantation
(3rd of 6 implantations)

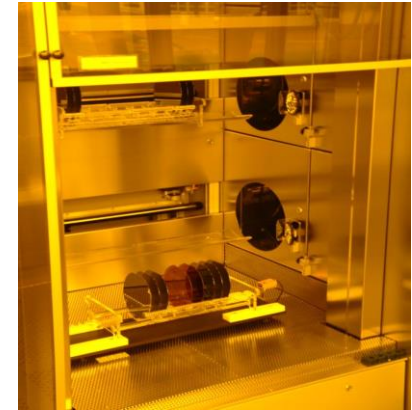
- 2 problems with clean room equipment

- CVD Nitride tube

Cu contamination

(life time killer)

took us quite a long time to identify the source
new quartz glass inliner - fresh from the factory



- same tube: particle generation

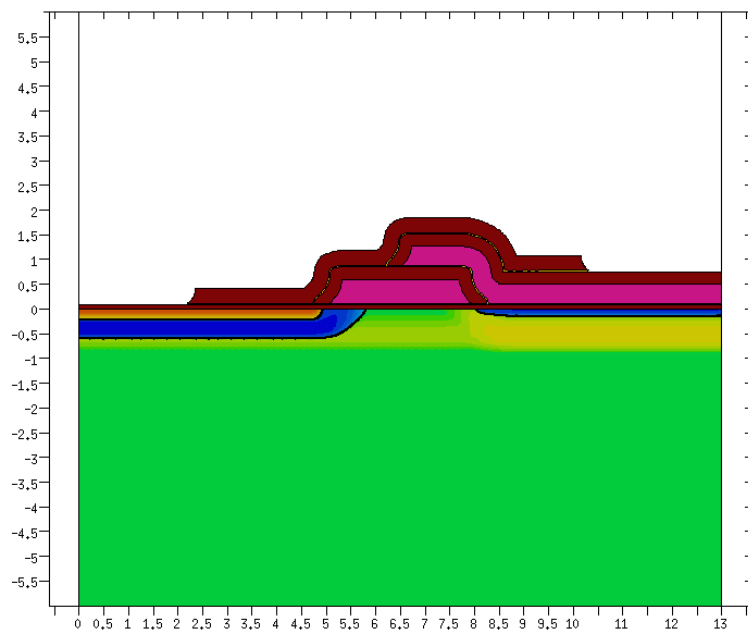
- handling roboter of **wet edge facility**
crashed

Both are repaired and work fine



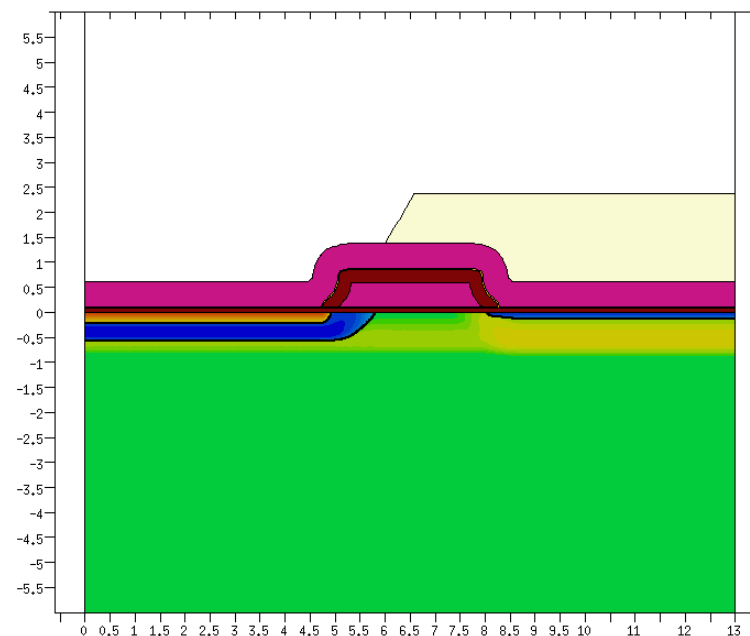
Delays

PXD9-20
about 2 month delay



First contact etching almost finished
-> Metal 1 deposition

PXD9-21
about 1 month delay



Before poly 2 etching
-> 2 implantations
-> contact system

- **PXD9-20/21 Schedule**



PXD9-20 (7 wafer) phase2: June
phase 3: September/October

PXD9-21 (12 wafer) phase2: August
phase3: end of the year