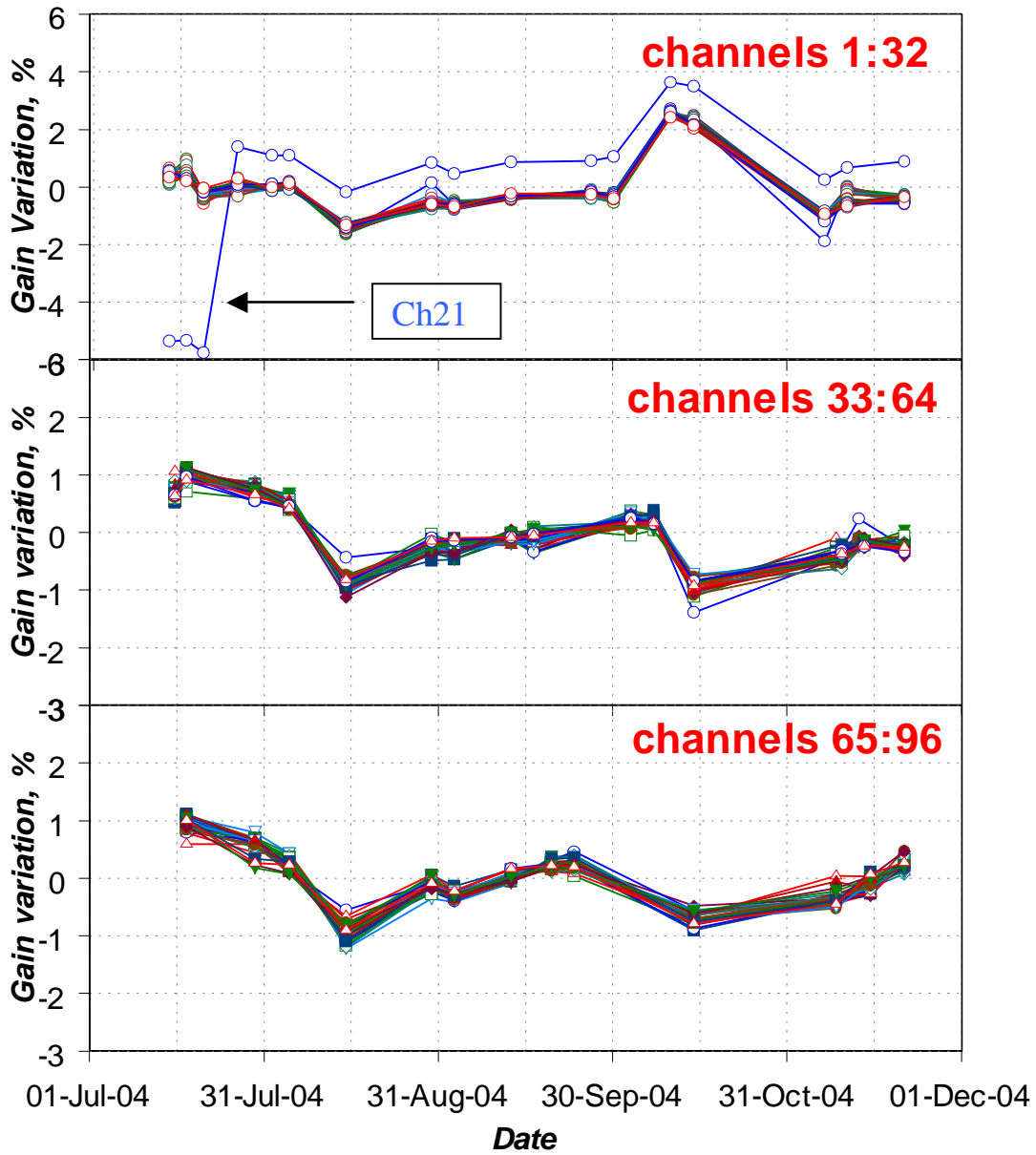


TDB long term test: 15 July –21 November

TDB Long Term test Gain variation



Usually the gain flows in the range of measurement precision

Channel 21 –contact problem

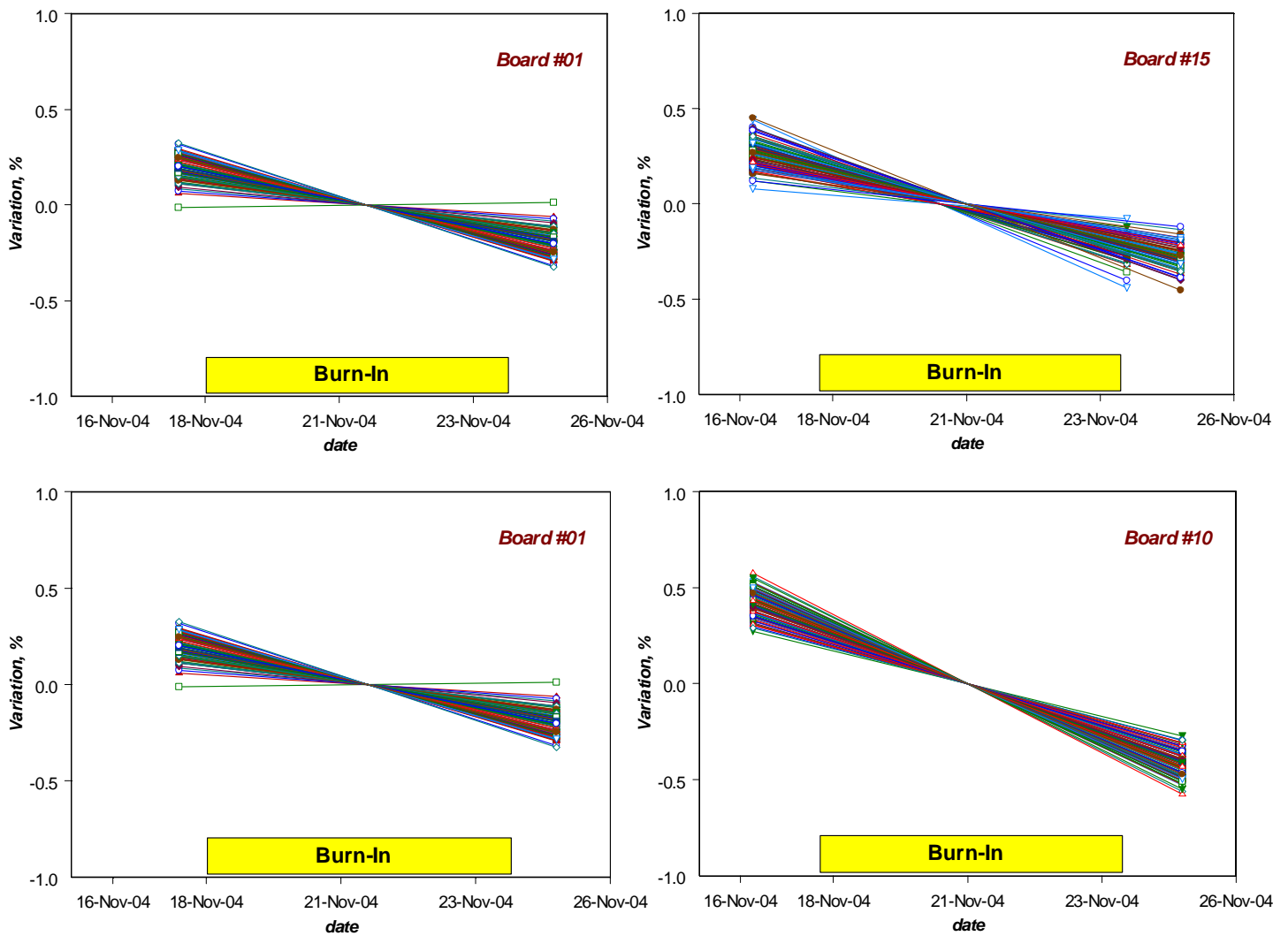
Production of serial Tower Driver Boards

- **23 boards (not full mounted) have been produced in Russia in September 2004**
- **Production of mechanic parts is completed on 1 November**
- **Full installation of parts (mechanic, voltage regulators and connectors) is completed on 22 November - big delay due to the later delivery of voltage regulators**
- **Functional test is completed on 23 November – all boards are working**
- **8 boards have been burned in period of 18 – 24 November under higher than resolved for the operation amplifier temperature, ~100°C**
- **Functional test of burned boards is started**

TDB Burn-In test: 18-24 November

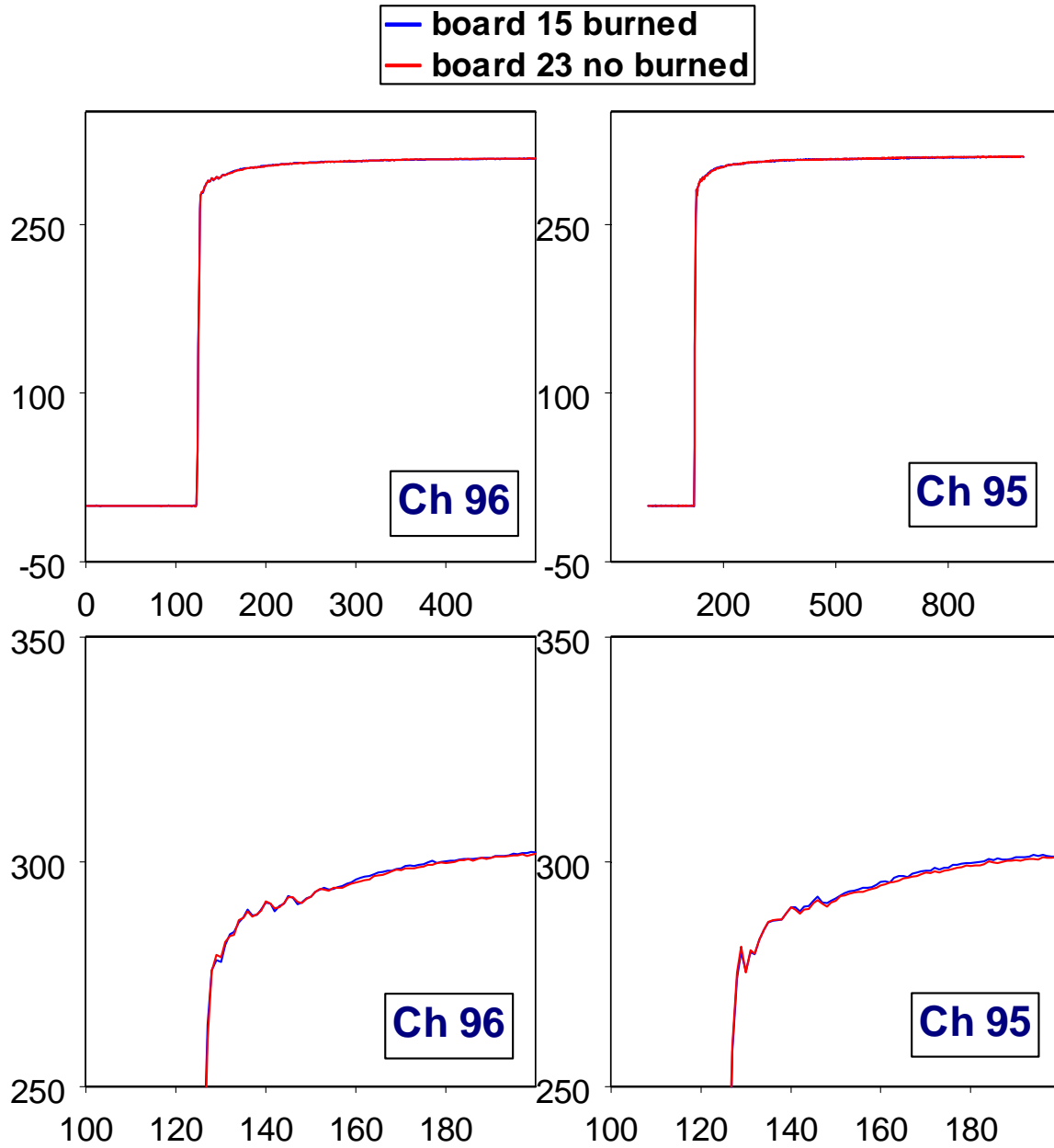
No dead channels on the fourth tested boards

Gain variation



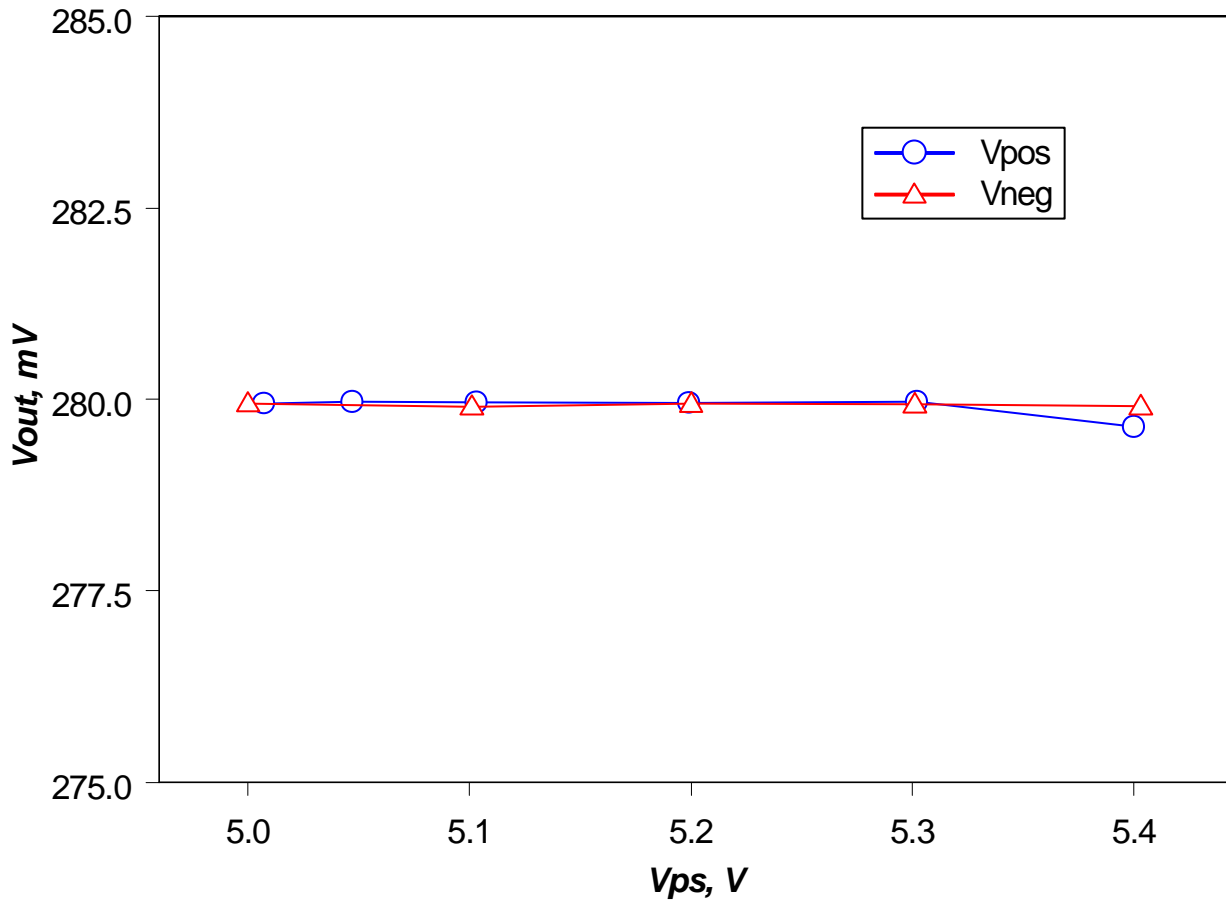
Small drop but in the range of measurement precision

Signal waveform



No big difference

Signal amplitude vs power supply voltages



No dependence