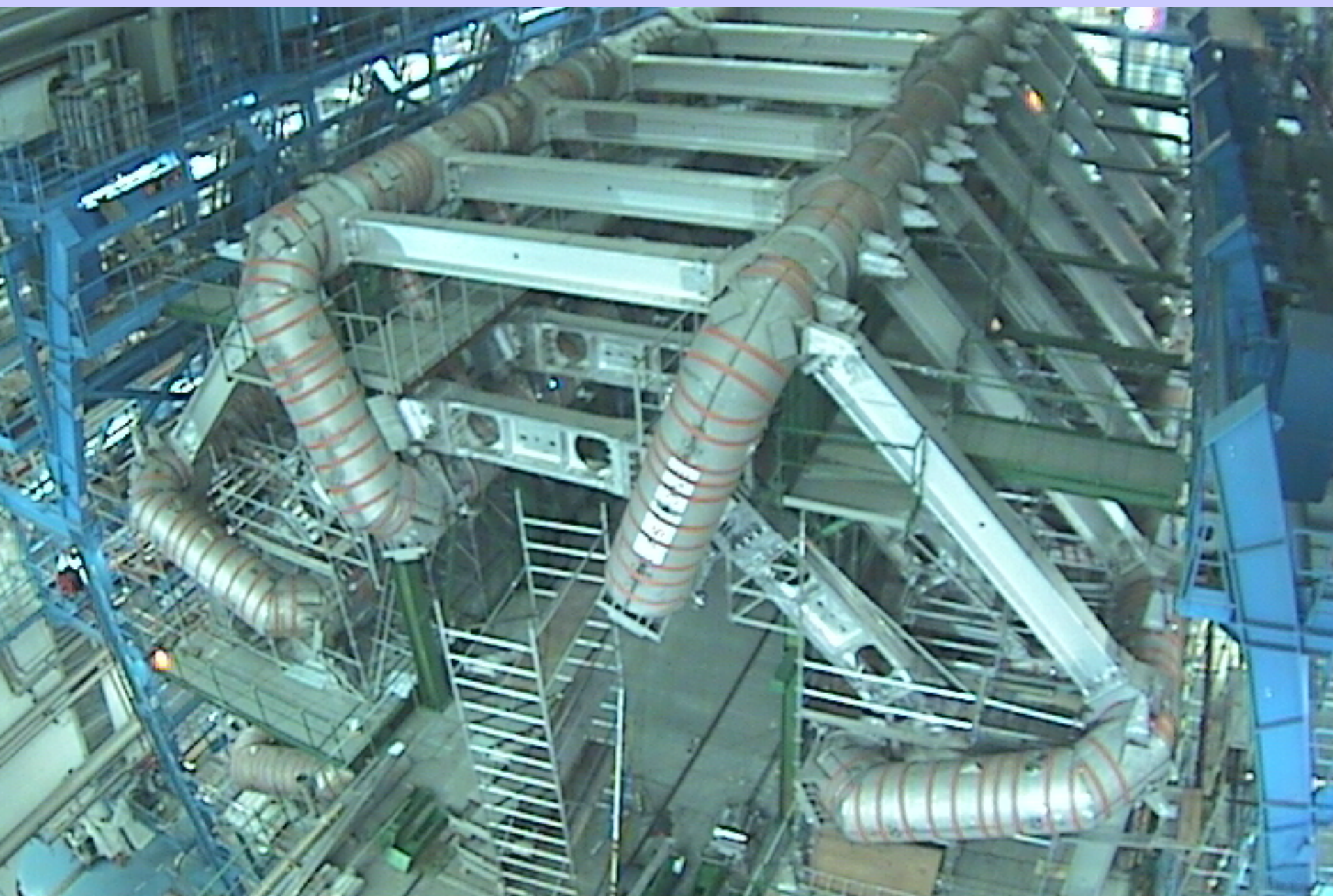


# Status MDT





# Barrel Toroid Assembly

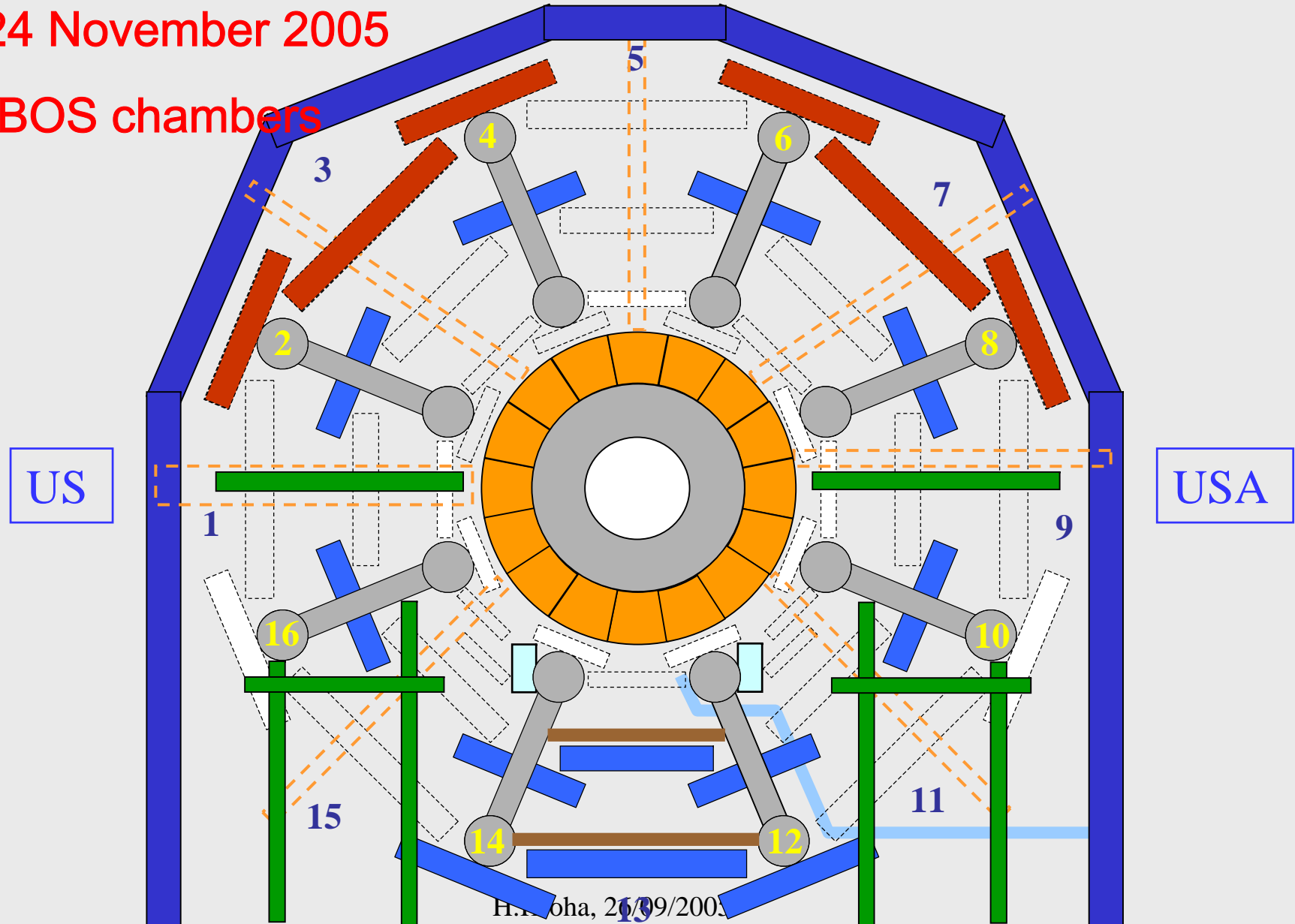




# BOS & BOL chambers in sectors 2-8

9–24 November 2005

48 BOS chambers



# Status of BOS/F MDT Chamber Construction

---

- ❑ 88 chambers + 13 spares + 106 supports to be built.
  - ❑ 88 chambers + 9 spare chambers glued.
  - ❑ 73 chambers + 9 spares tested with final electronics.
  - ❑ 52 chambers at CERN.
  - ❑ 87 common supports assembled, 77 at CERN, 10 installed.
  - ❑ 34 chambers integrated with RPC at CERN.
  - ❑ 4 chambers installed in ATLAS.
- 
- ❑ 4 replacement chambers to be glued.
  - ❑ 10 chambers + 4 repl.ch. to be assembled with gas system.
  - ❑ 14 chambers + 4 repl.ch. to be assembled with final elec.
  - ❑ 14 chambers + 4 repl.ch. to be tested at LMU.
  - ❑ 54 chambers to be integrated with RPCs at CERN.

	7A	6A	5A	4A	3A	2A	1A	1C	2C	3C	4C	5C	6C	7C
02		GTE	GTEI	GTEI	GTEI	GTEI	GTEI	GTE	GTE	GTEI	GTEI	GTE	GTE	
04		GTE	GTEI	GTE	GTEI	GTEI	GTEI	GTEI	GTEI	GTEI	GTEI	GTEI	GTE	
06		GTE	GTEI	GTEI	GTEI	GTEI	GTEI	GTEI	GTE	GTEI	GTE	GTE	GTE	
08		GTE	GTE	GTEI	GTEI	GTEI	1440	GTE	GTEI	GTEI	GTEI	GTEI	GTE	
10		GTE	GTE	GTE	GTE	GTE	GTE	GTE	GT	2160	2160	GTE	1920	
16		1920	GTE	GTE	GTE	GTE	GTE	GTE	GT	2160	GTE	GTE	1920	
12	1200		GTE		GTE		GTEI	GTEI		GTE		G		G
14	1200		GTE		G		GTEI	GTEI		GTE		GTE		1200

2160, 1920, 1440, 1200 mm wide chambers = glued

G = gas system mounted

GT = tested with preliminary electronics

GTE = tested with final electronics

GTEI = integrated with RPC

Chambers to be replaced

Chamber construction and test in Munich will continue until end of 2005.

# Chamber Integration at CERN

Crew lead by Joerg Dubbert:

3 MPI + 2 LMU physicists

1 engineer

8 technicians

at CERN since 25 July 05.

By far strongest MDT integration team at CERN. Necessary to keep the installation schedule.

Goal of 8 integrations per week achieved during last two weeks.

Now limited by RPC pretest.

30 chambers integrated in total.

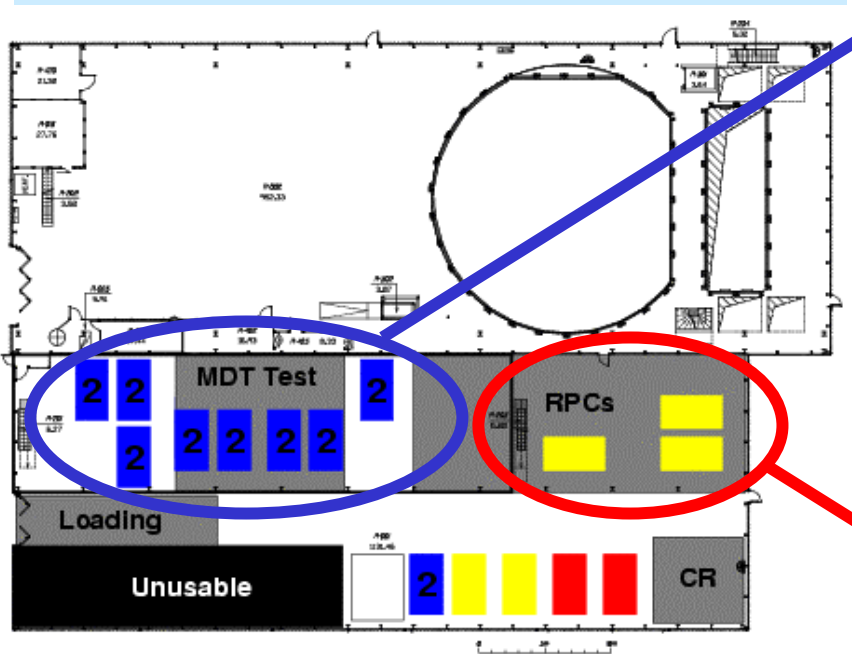


Work at CERN will continue until spring 2006 (integration, installation, commissioning)



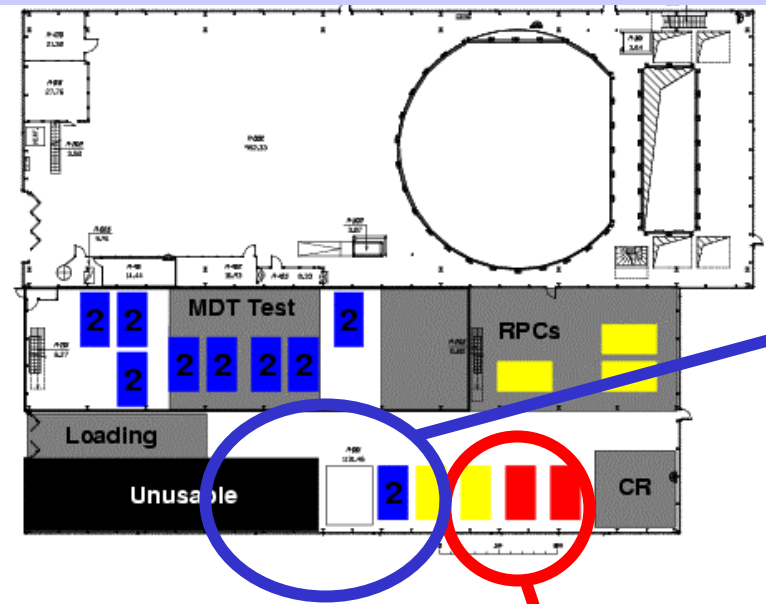
# Chamber Integration at CERN

1. MDT gas leak, HV, noise test:  
40 chambers tested, all w/o  
problems, no broken wires



2. RPC assembly (2 units each)  
and cabling by RPC team

# Chamber Integration at CERN



4. Mounting and adjustment of the MDTs on top of the common support at the different installation angles

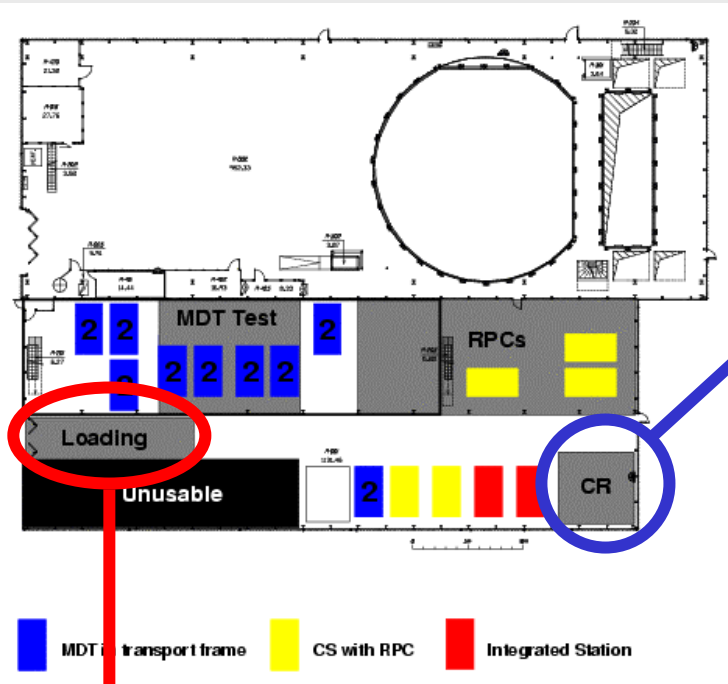
3. Installation of RPCs in the common support frame





# Chamber Integration at CERN

5. Cosmic ray test of assembled MDT and RPC stations



6. Transport to storage hall



# Chamber Integration at CERN

7. Storage in former underground water reservoir until installation in the ATLAS cavern.

