



Project-Review 2005

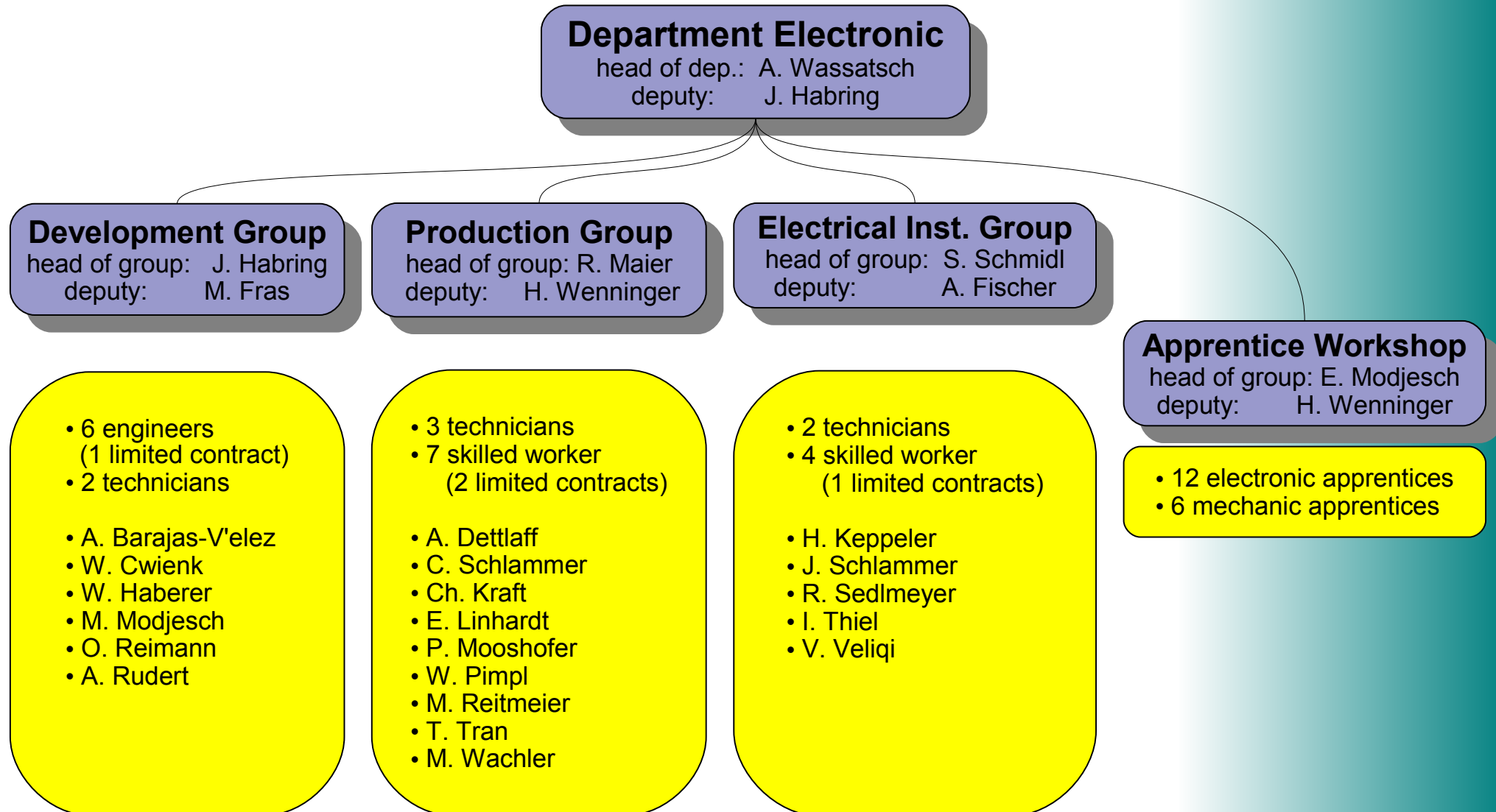
Dept. Electronic

A. Wassatsch

- Workload distribution
- Project highlights
- News
- Manpower requests 2006/7



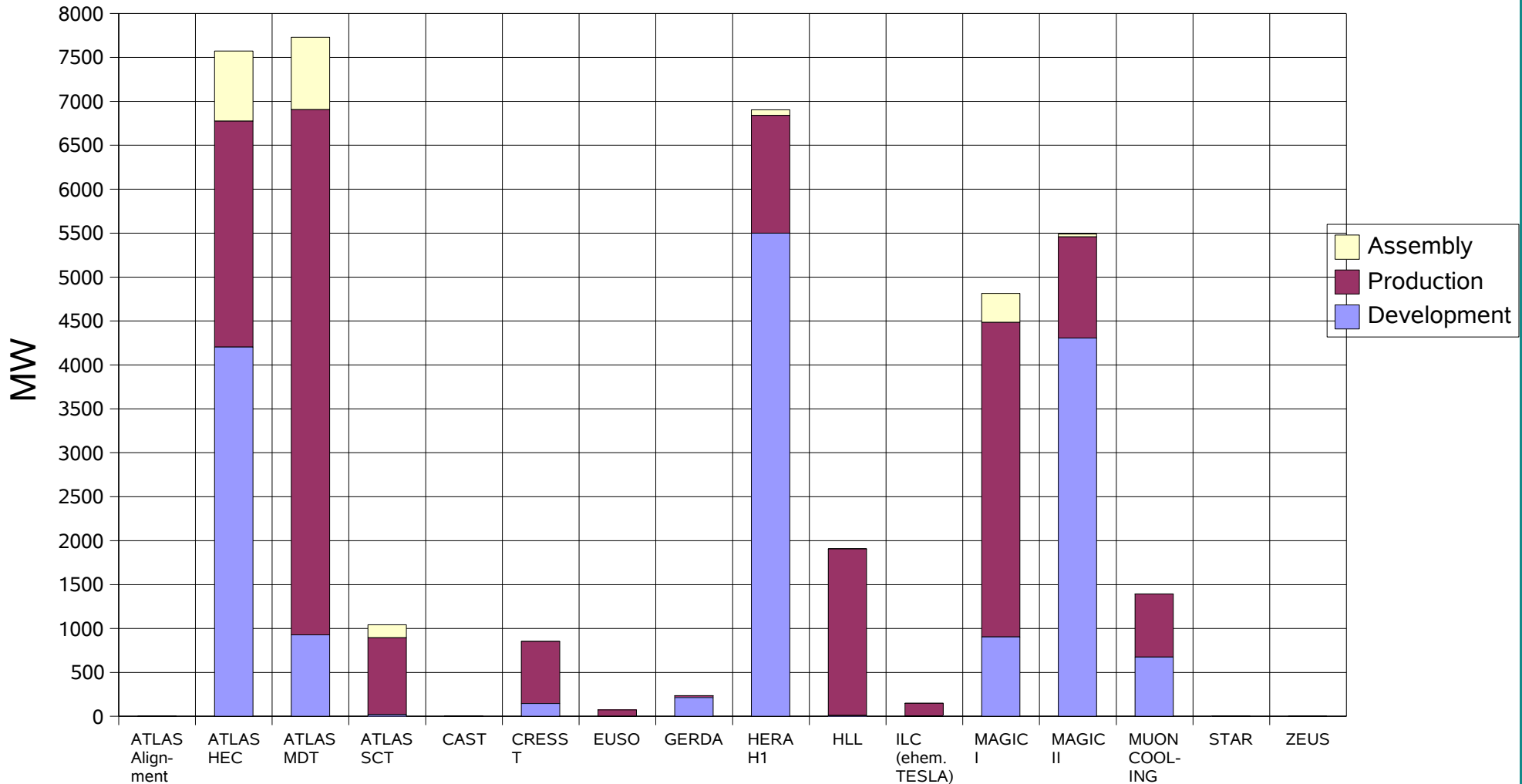
Organisational Structure



Workload Dept. Electronic 2005



MPI für Physik
Abt. Elektronik



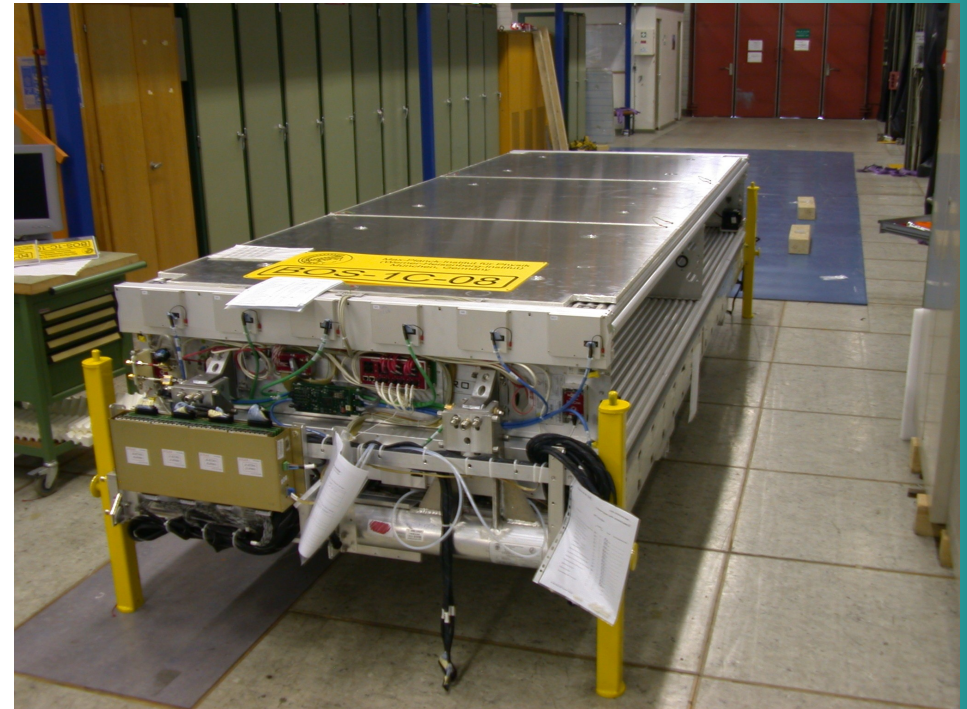
ATLAS HEC

- HEC LV box
 - DC/DC converter (Wiener)
 - Radiation test (Prodvino)
 - EMV test (CERN)
- Monitor board + LV distribution board
- Cold-test of HEC C and A with 4 LV boxes



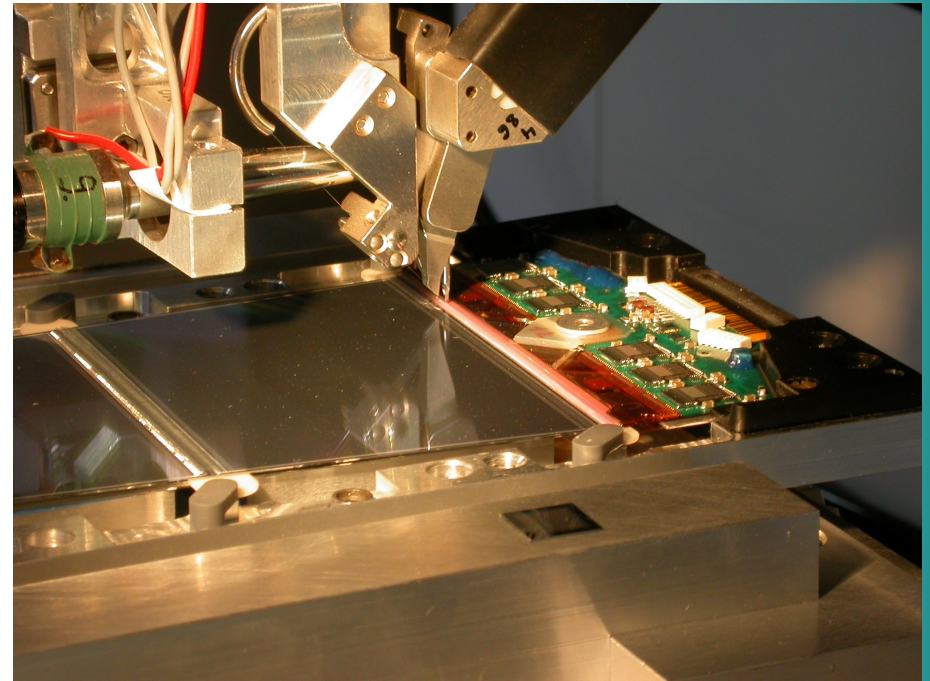
ATLAS MDT

- 76 cambers manufactured in Munich (cabling and test)
- 64 cambers integrated with RPC devices at CERN



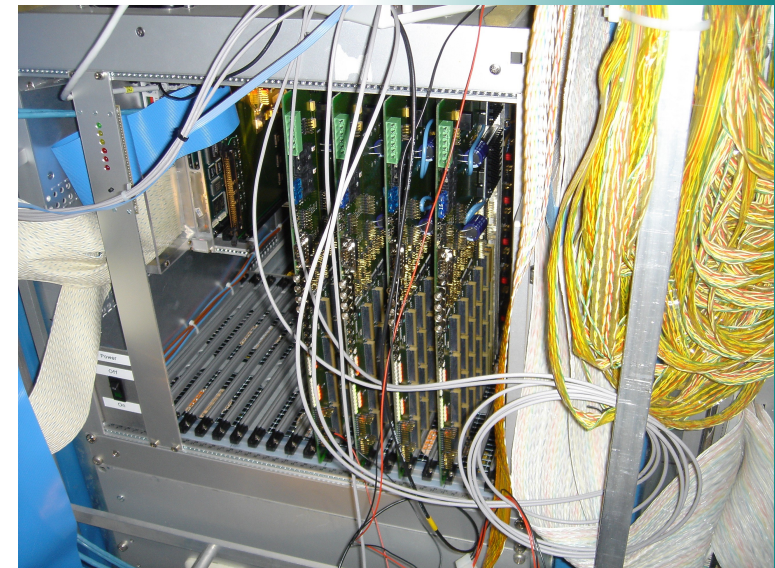
ATLAS SCT

- Inhouse activities successfully finished mid of 2005
- Thanks to C.Schlammer, S.Lenz, E.Linhardt and M. Wachler
- Leased bond machine is returned to the manufacturer
- no automated bond machine available in our technical facilities



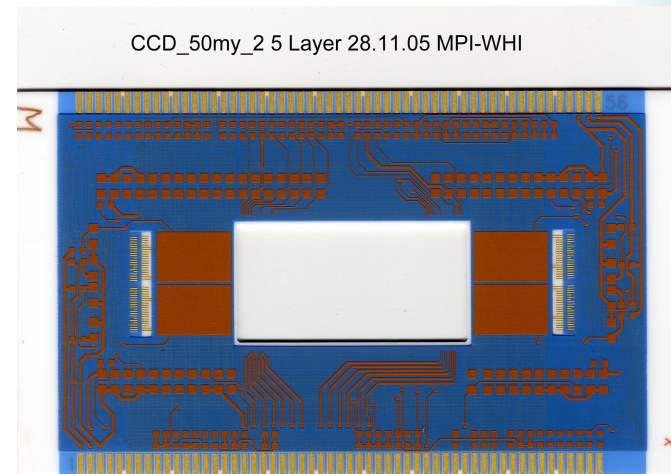
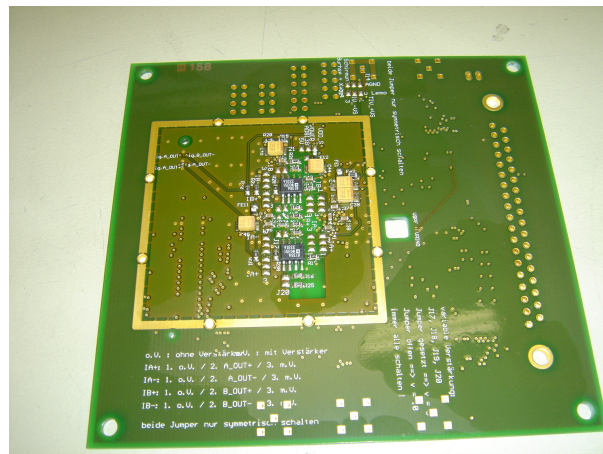
H1 Jettrigger

- All subsystems installed in HH
- Integration in readout
- Commissioning of the JT in progress
 - Manly test software development
- open topics:
 - ACS-A
 - BFU Re-Layout



HLL

- Hybrid production (mostly for MPE projects)
- Pcb prototype production for first ILC pixel detector tests





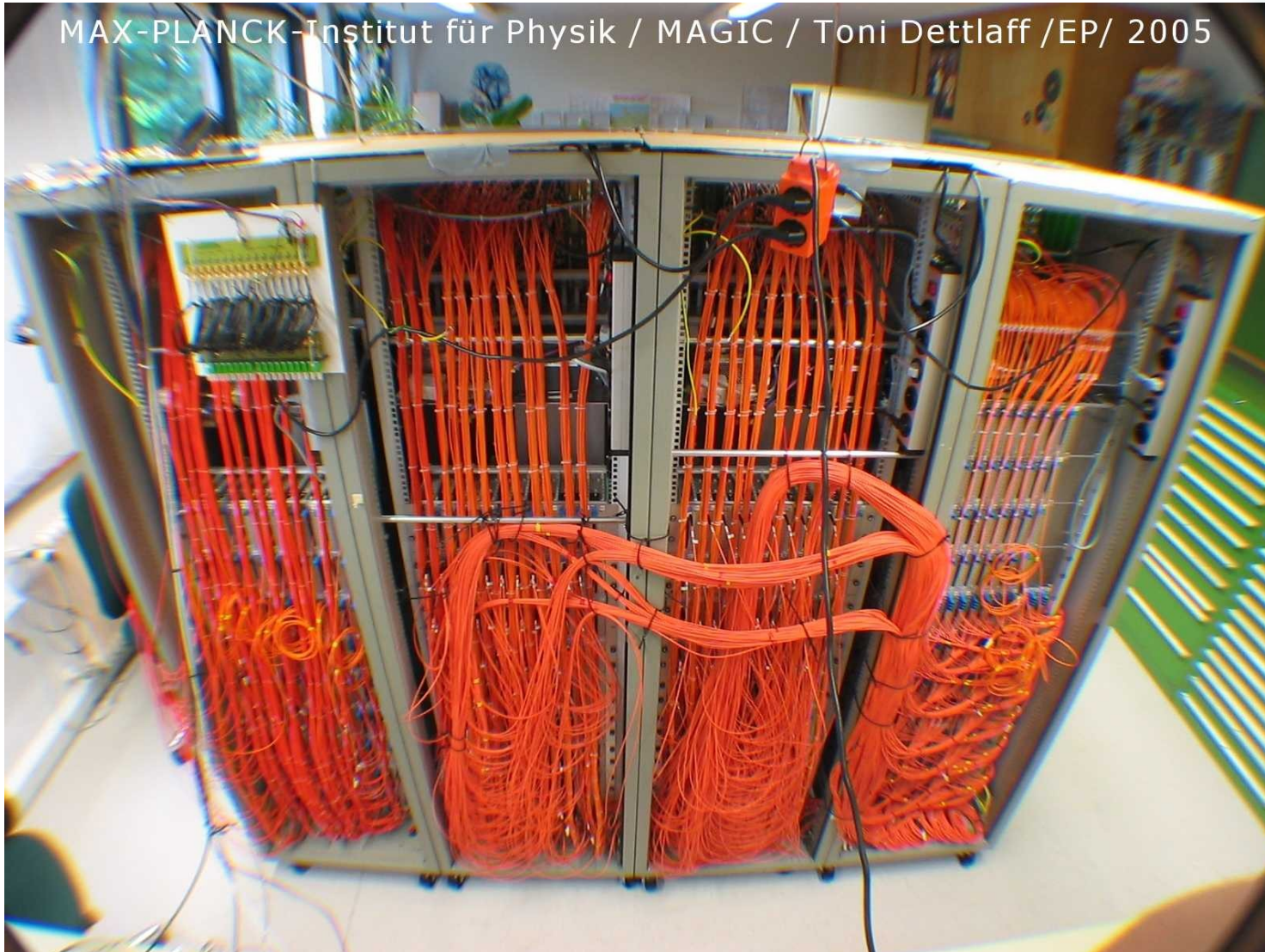
MAGIC

- Time-Multiplexed Fast ADC system
- Start of the MAGIC 2 camera design
 - 7 Pixel Cluster solution as a compromise between costs and modularity
 - Direct ethernet connection of each cluster via ARM based μ Controller linux
- Maintenance of the MAGIC telescope



MAGIC (cont.)

MAX-PLANCK-Institut für Physik / MAGIC / Toni Dettlaff / EP/ 2005





Muon cooling

- Reorganization of the electronic equipment
 - Modular system
 - Power sequencing
 - U/I monitoring

- Open topics
 - Preamplifier
 - SD sensor handling

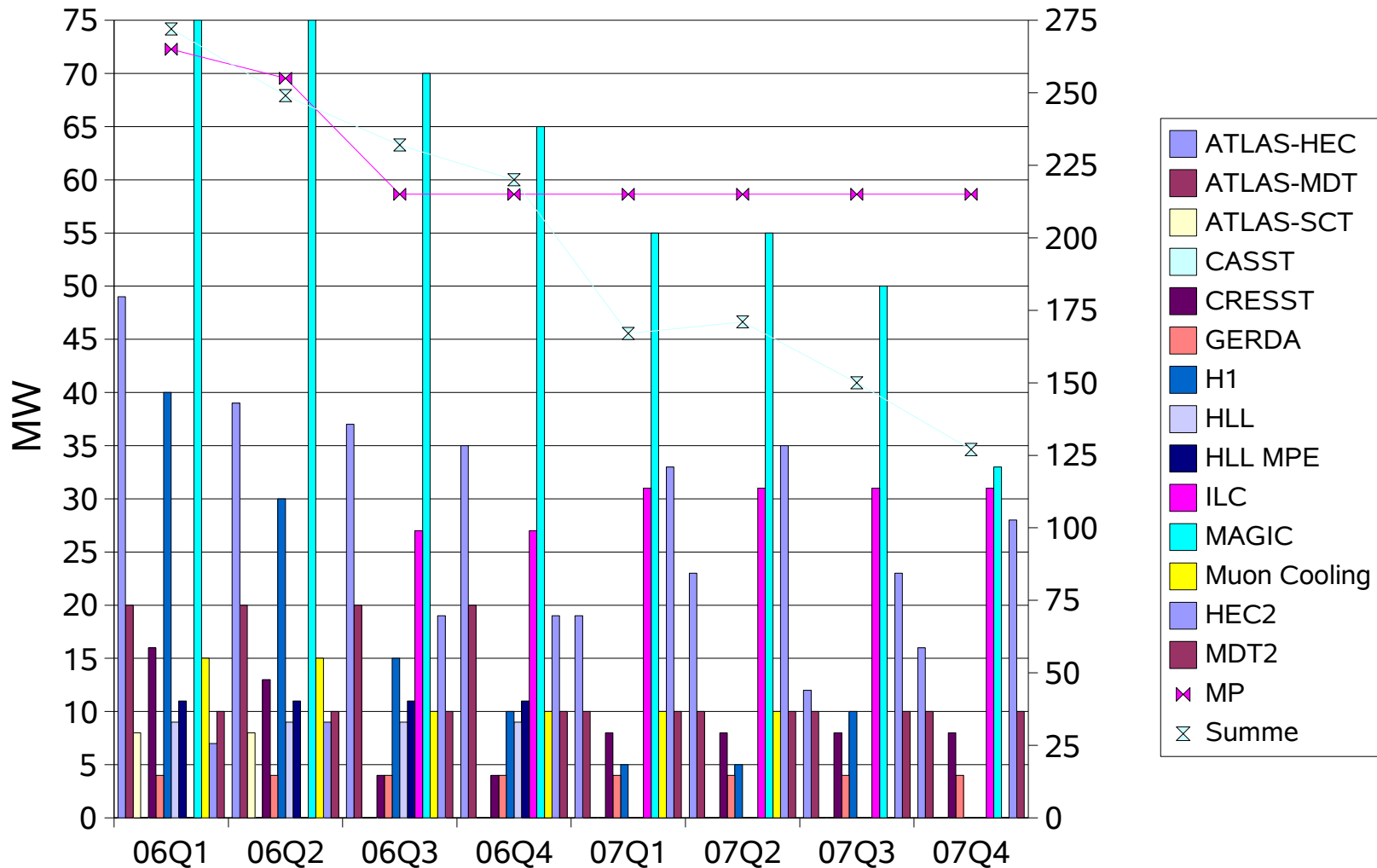


Manpower Request for 2006/7

	06Q1	06Q2	06Q3	06Q4	07Q1	07Q2	07Q3	07Q4
ATLAS-HEC	49	39	37	35	19	23	12	16
ATLAS-MDT	20	20	20	20	10	10	10	10
ATLAS-SCT	8	8	0	0	0	0	0	0
CASST	0	0	0	0	0	0	0	0
CRESST	16	13	4	4	8	8	8	8
GERDA	4	4	4	4	4	4	4	4
H1	40	30	15	10	5	5	10	0
HLL	9	9	9	9	0	0	0	0
HLL MPE	11	11	11	11	0	0	0	0
ILC	0	0	27	27	31	31	31	31
MAGIC	75	75	70	65	55	55	50	33
Muon Cooling	15	15	10	10	10	10	0	0
ZEUS	0	0	0	0	0	0	0	0
Allg.	25	25	25	25	25	25	25	25
Summe	272	249	232	220	167	171	150	127
MP	26,5	25,5	21,5	21,5	21,5	21,5	21,5	21,5
	-7	6	-17	-5	48	44	65	88
HEC2	7	9	19	19	33	35	23	28
MDT2	10	10	10	10	10	10	10	10
Summe	289	268	261	249	210	216	183	165
	-24	-13	-46	-34	5	-1	32	50



Manpower Request for 2006/7





Outlook 2006

- Finishing of current project tasks:
 - ATLAS HEC
 - ATLAS MDT
 - H1 Jettrigger
- MAGIC II major project for electronic dept. in 2006
- Start of new projects:
 - ILC, LHC2 developments