

# Status of BOS/F MDT Chamber Construction

---

- ❑ 88 chambers + 13 spares + 106 supports to be built.
  - ❑ 88 chambers + 13 spare chambers glued.
  - ❑ 88 chambers + 13 spares complete with final electronics.
  - ❑ 86 chambers at CERN.
  - ❑ 80 chambers integrated with RPC at CERN.
  - ❑ 86 chambers + 13 spares tested at LMU.
  - ❑ 86 chambers + 13 spares tested with final electronics.
  - ❑ 106 common supports assembled and at CERN, 10 installed.
  - ❑ 6 chambers installed.
- 
- ❑ 2 chambers to be tested at LMU.
  - ❑ 8 chambers to be integrated with RPCs.
  - ❑ 82 to be installed.

	7A	6A	5A	4A	3A	2A	1A	1C	2C	3C	4C	5C	6C	7C
02		GTEI	GTEI	GTEI	GTEI	GTEI	GTEI	GTEI	GTEI	GTEI	GTEI	GTEI	GTEI	
04		GTEI	GTEI	GTEI	GTEI	GTEI	GTEI	GTEI	GTEI	GTEI	GTEI	GTEI	GTEI	
06		GTEI	GTEI	GTEI	GTEI	GTEI	GTEI	GTEI	GTEI	GTEI	GTEI	GTEI	GTEI	
08		GTEI	GTEI	GTEI	GTEI	GTEI	GTEI	GTEI	GTEI	GTEI	GTEI	GTEI	GTEI	
10		GTEI	GTEI	GTE	GTEI	GTEI	GTEI	GTEI	GT	GTEI	GTEI	GTEI	GTE	
16		GTE	GTEI	GTEI	GTEI	GTE	GTE	GTEI	GT	GTEI	GTEI	GTEI	GTE	
12	GTEI		GTEI		GTEI		GTEI	GTEI		GTEI		GTEI		GTEI
14	GTEI		GTEI		GTEI		GTEI	GTEI		GTEI		GTEI		GTEI

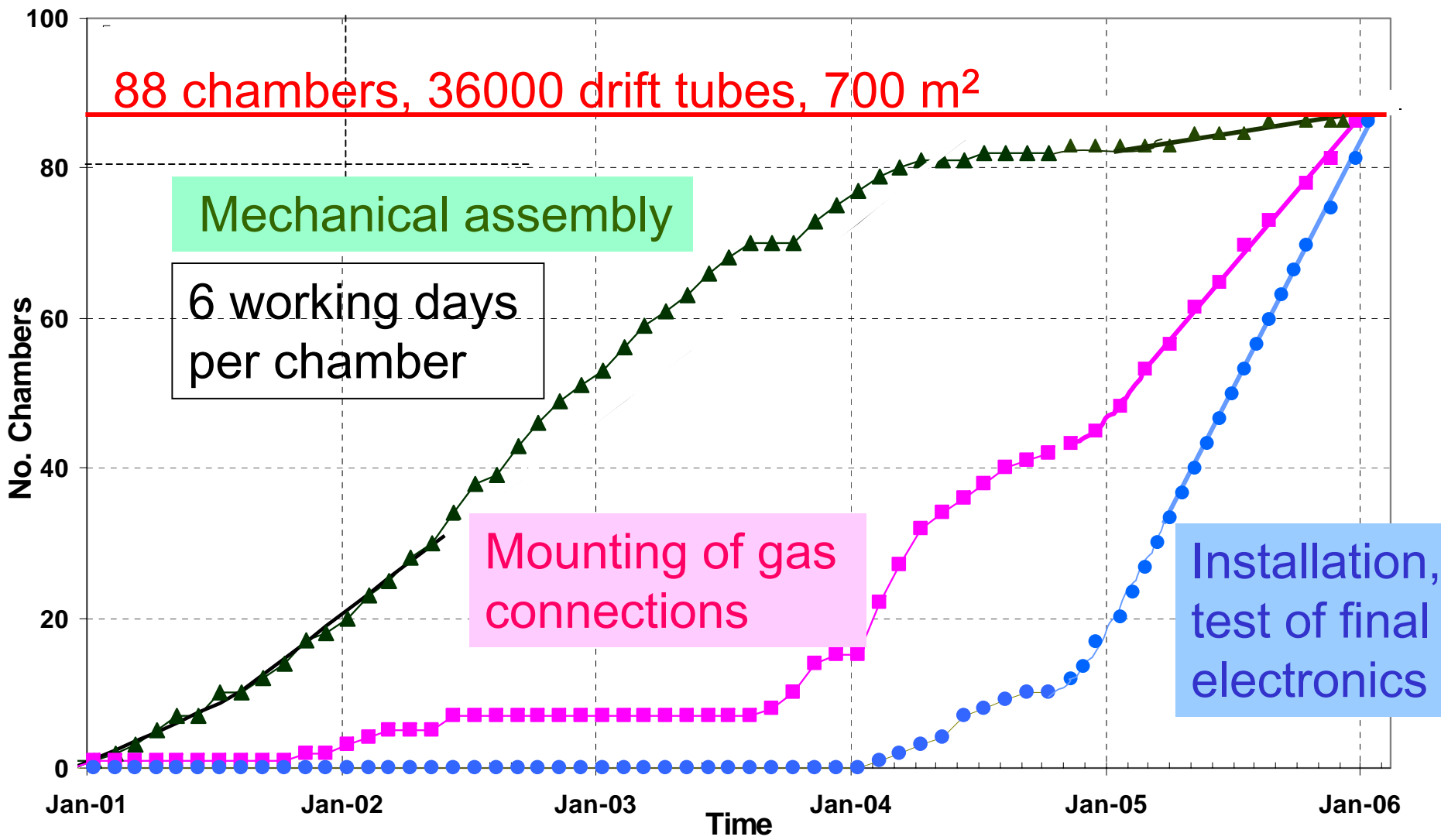
GT = tested with prelim. electronics

GTE = tested with final electronics

GTEI = integrated with RPC

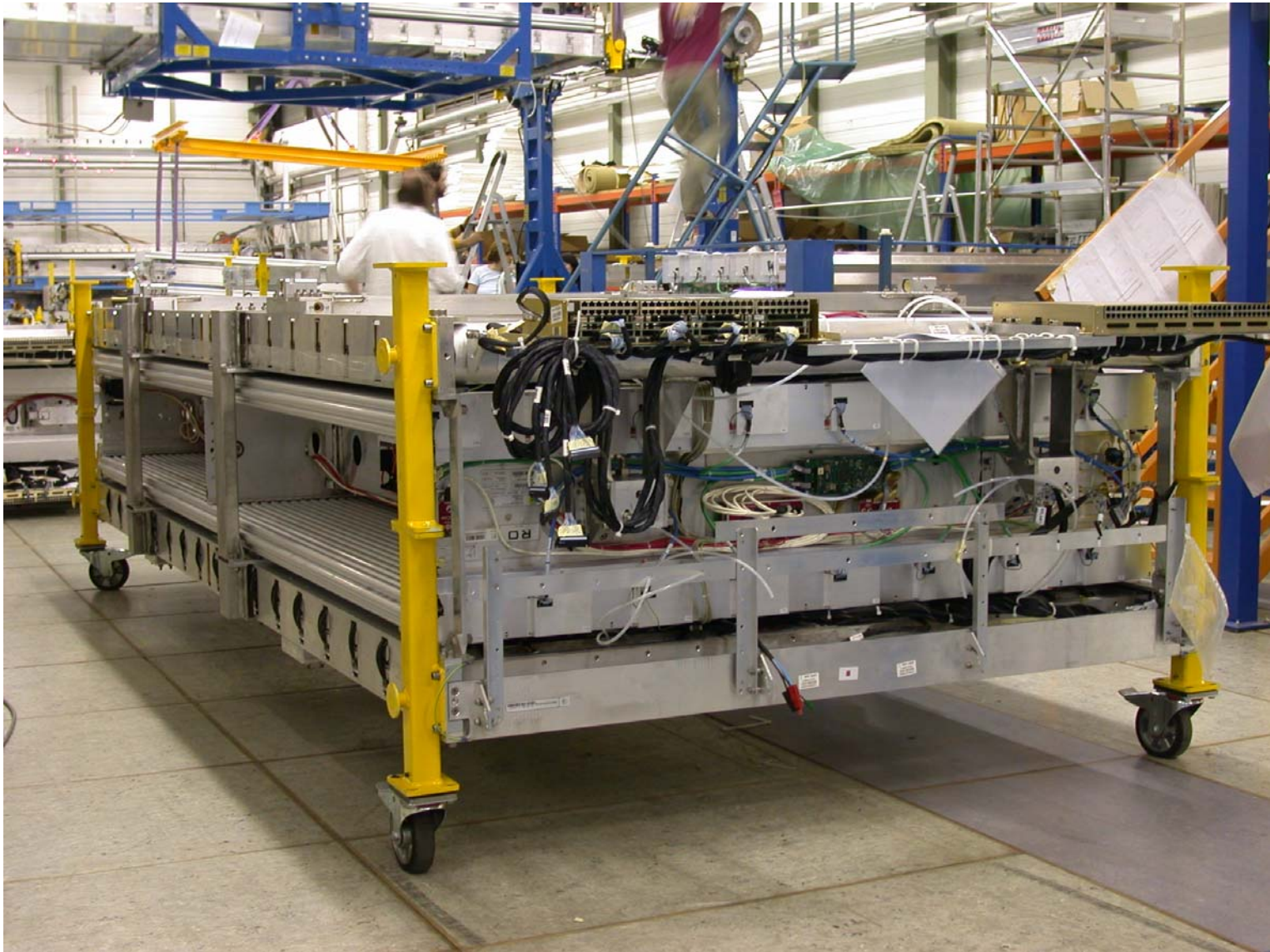
GTEI = installed

# MDT Chamber Construction and Test 2001-2005



Chamber construction completed in December 2005.

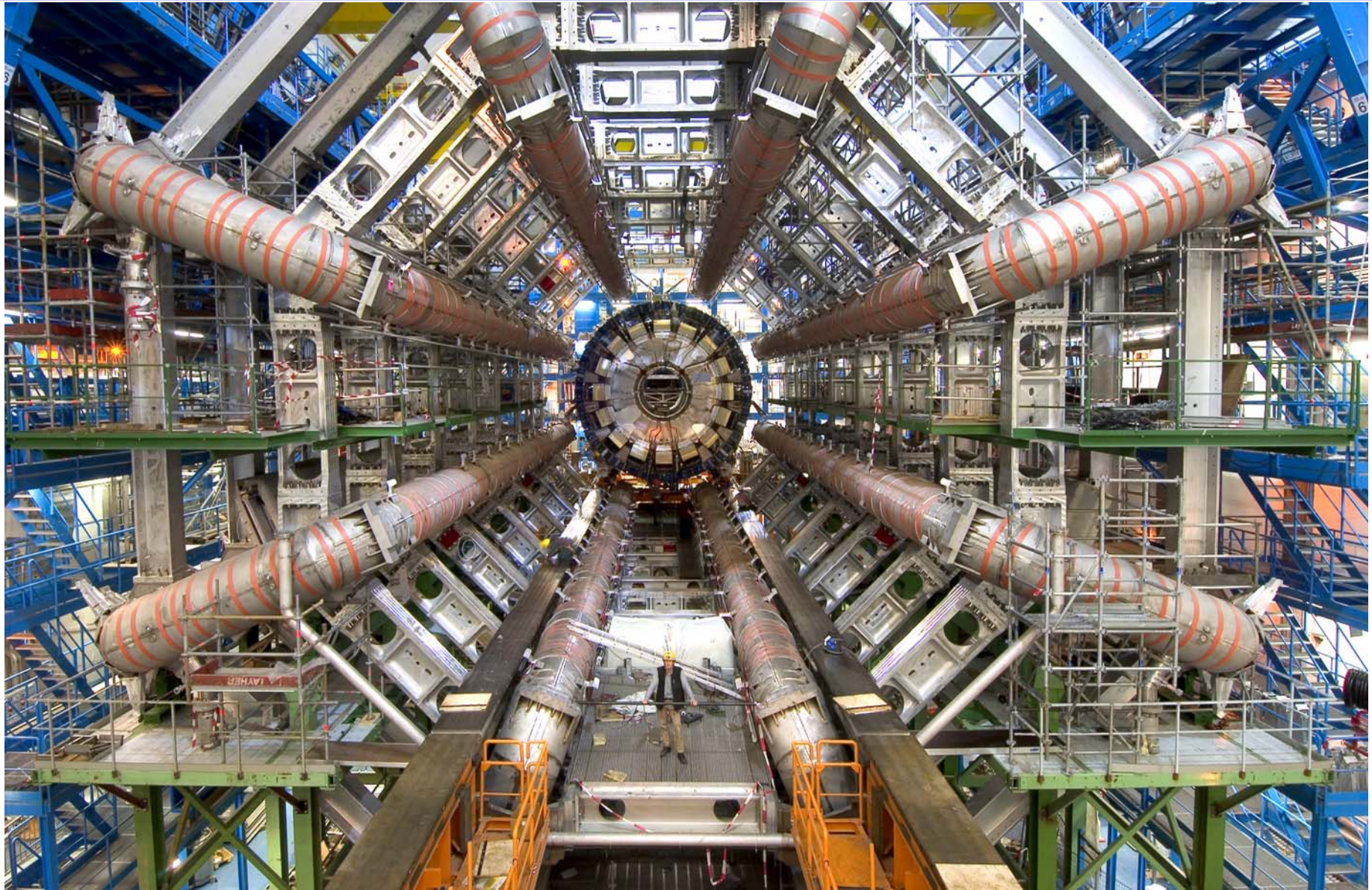
# Chamber Integration and Commissioning BB5



H.Kroha, 13.2.2006



# Chamber Installation



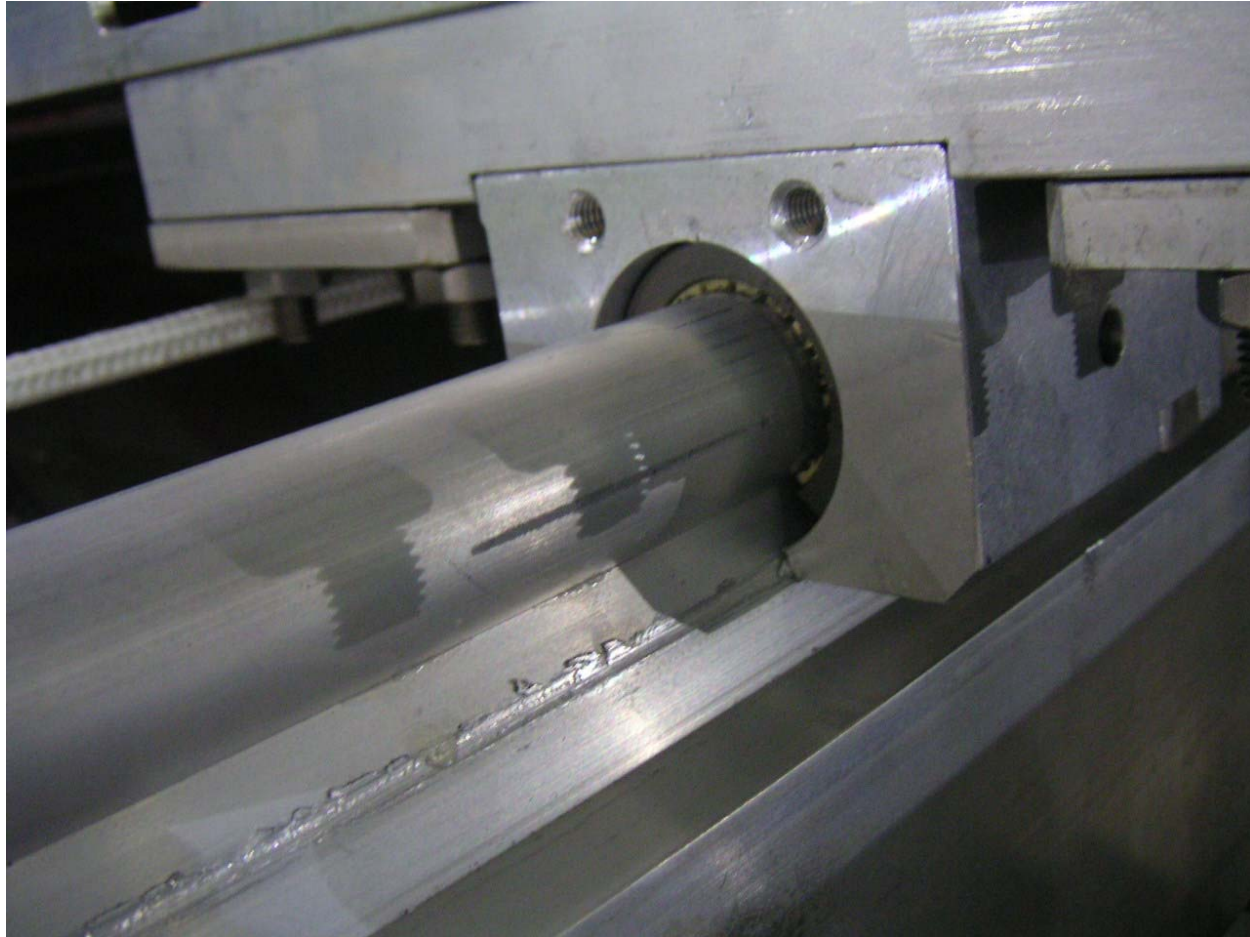
H.Kroha, 13.2.2006





H.Kroha, 13.2.2006

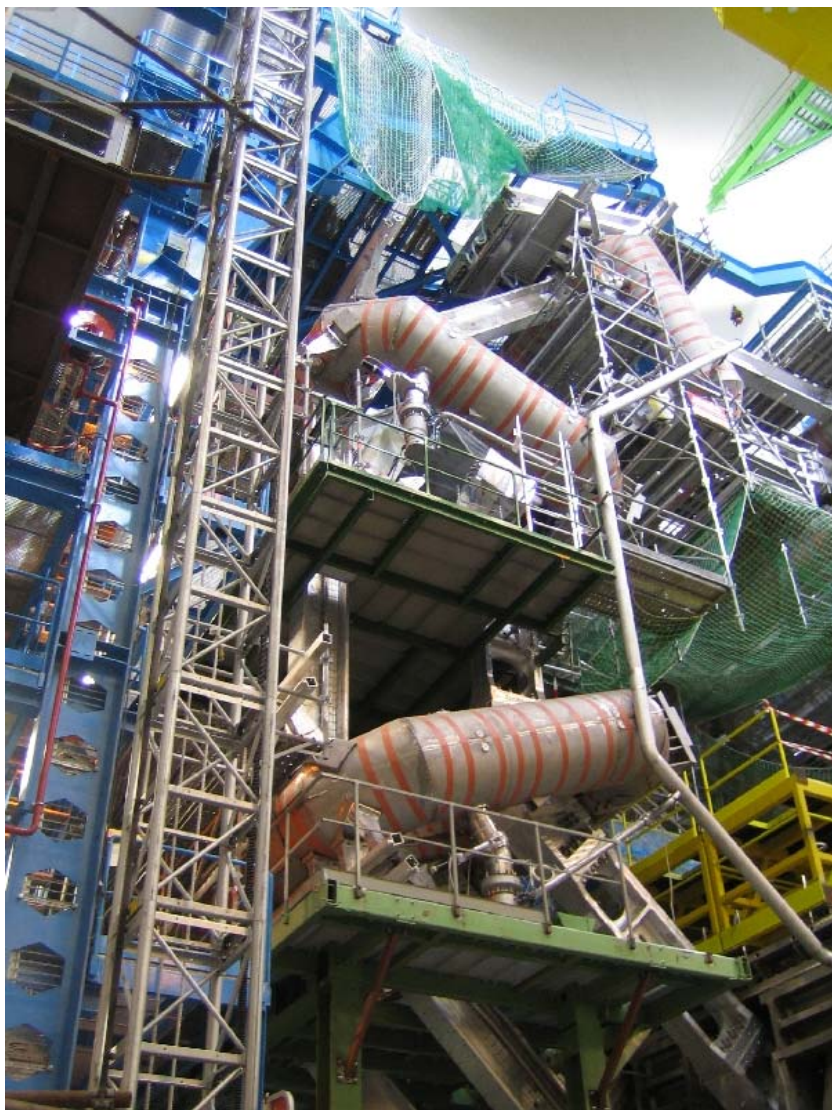
## An unexpected problem with the rails



H.Kroha, 13.2.2006



# First BOS MDT chamber installed on rails on 10 February 2006



H.Kroha, 13.2.2006



# Final adjustment of the position relative to IP

