

Status of MDT Chamber Construction & Installation

- ❑ 88 chambers + 14 “spare” chambers + 106 supports built.
 - ❑ 88 + 2 chambers and 106 supports at CERN.
 - ❑ 86 chambers integrated with RPC at CERN.
 - ❑ 56 chambers installed since February 2006 (60%).
 - ❑ 66 supports installed (56 BOS/BOF Munich, 10 BOG Freiburg).
-

- ❑ 2 chambers to be integrated with RPC (RPC missing).
 - ❑ 7 integrated chambers still to be disassembled and repaired because of RPC problems (out of 24 in total).
 - ❑ 32 chambers to be installed:
 - 20 until end of May (sectors 2,4,6,8,10,12,14 complete),
 - 12 in sector 16 until end of June?
 - Then gas and electrical connections, commissioning.
-

	7A	6A	5A	4A	3A	2A	1A	1C	2C	3C	4C	5C	6C	7C
02		GTEI	GTEI	GTEI	GTEI	GTEI	GTEI	GTEI	GTEI	GTEI	GTEI	GTEI	GTEI	
04		GTEI	GTEI	GTEI	GTEI	GTEI	GTEI	GTEI	GTEI	GTEI	GTEI	GTEI	GTEI	
06		GTEI	GTEI	GTEI	GTEI	GTEI	GTEI	GTEI	GTEI	GTEI	GTEI	GTEI	GTEI	
08		GTEI	GTEI	GTEI	GTEI	GTEI	GTEI	GTEI	GTEI	GTEI	GTEI	GTEI	GTEI	
10		GTEI	GTEI	GTEI	GTEI	GTEI	GTEI	GTEI	GTEI	GTEI	GTEI	GTEI	GTEI	
16		GTEI	GTEI	GTEI	GTEI	GTE	GTEI	GTEI	GTE	GTEI	GTEI	GTEI	GTEI	
12	GTEI		GTEI		GTEI		GTEI	GTEI		GTEI		GTEI		GTEI
14	GTEI		GTEI		GTEI		GTEI	GTEI		GTEI		GTEI		GTEI

XC-R1 GTE XC-R2 GTE XA-R5 GTE
 XA-R1 GTE XC-R3 GTE XA-R6 GTE
 XA-R2 GTE XC-R4 GTE XA-R7 GTE
 XA-R4 GTE XC-R5 GTE XC-R6 GTE
 XA-R3 GTE

GTE = tested with final electronics
 GTEI = integrated with RPC
 GTEI = installed

General Status of Muon Spectrometer Installation

BOL chambers in sectors 3 and 7 next

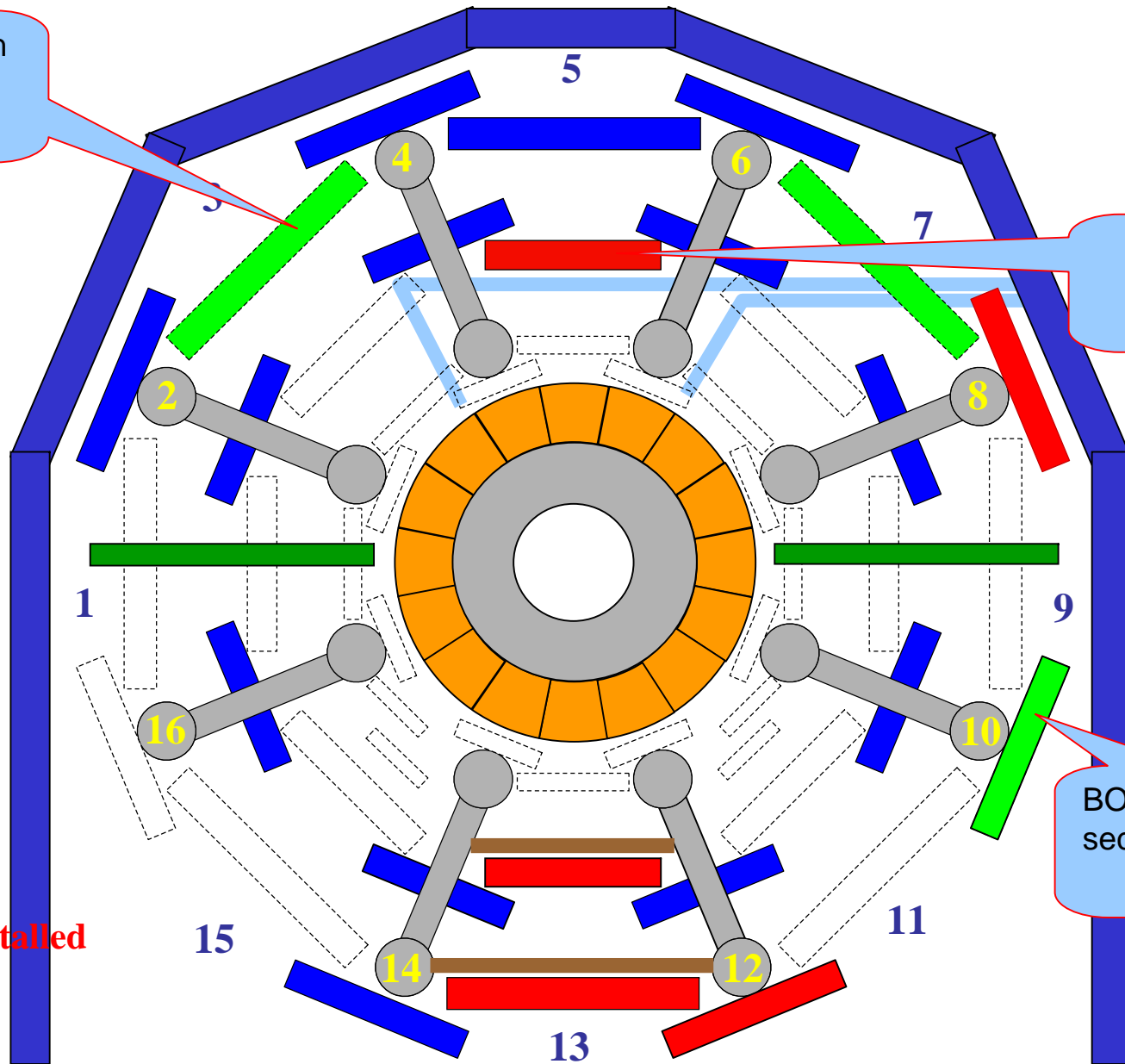
3 BMLs in sectors 5 just installed

US

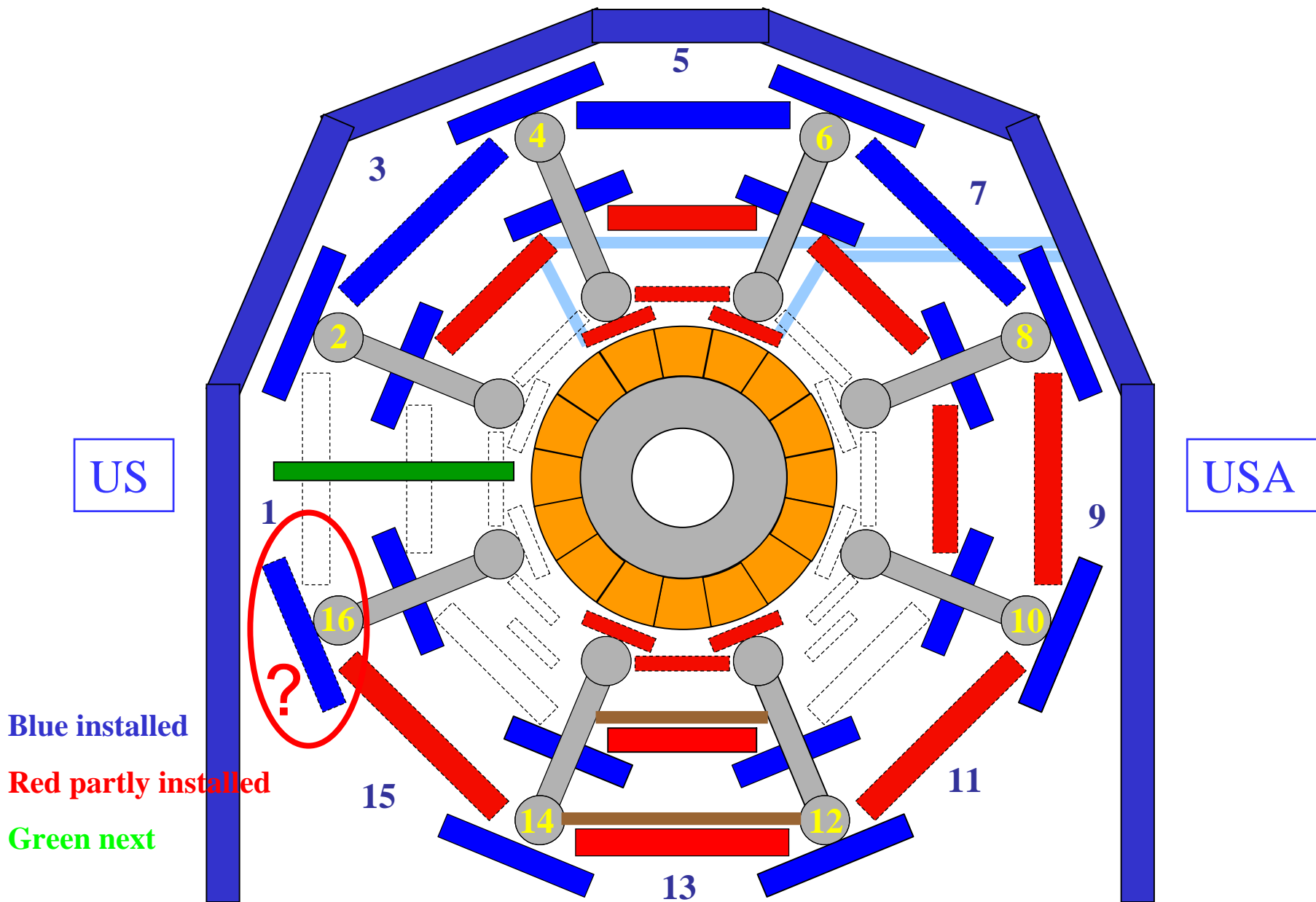
USA

BOS chambers in sectors 10 next

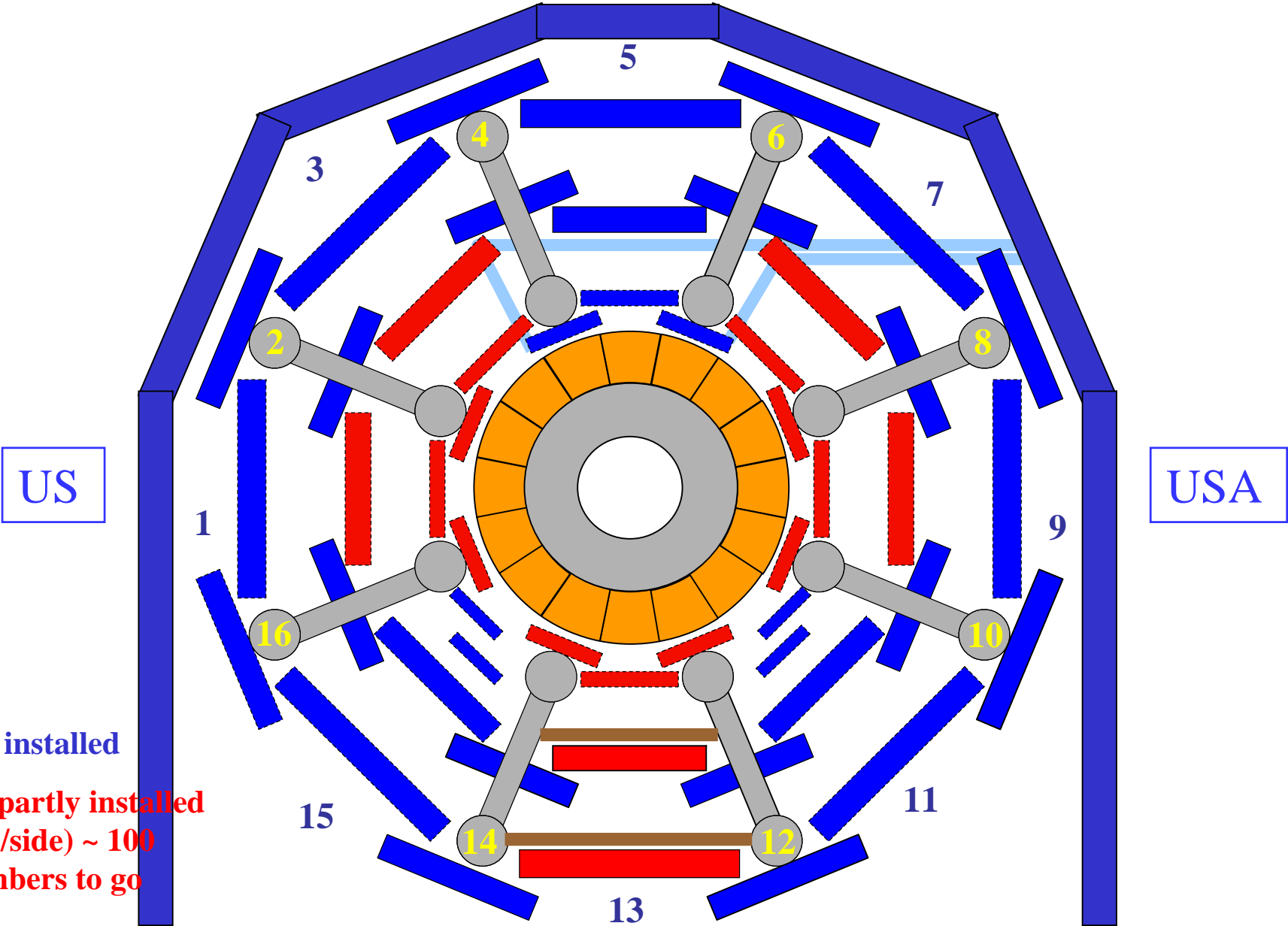
Blue installed
Red partly installed



Barrel Muon Spectrometer: Plan until end of May



Barrel Muon Spectrometer: Plan until end of July



Extensive test program at MPI, LMU, Eching, CERN BB5, CERN SX1, ATLAS cavern.

Failure statistics very favorable:

Komponente	Anzahl	In München	Am CERN	Prozent
Undichte O-Ringe	289712	0	0	0
Abgehängte Rohre	36192	18	1	0.05
Gerissene Drähte	36192	11	3	0.04
Frontend-Elx Karten	4876	50	40	1.85
HV Verteiler-Boxen	88	0	3	3.41
DCS Boxen	88	0	4	4.55
T-Sensor	1584	2	3	0.32
Alignment-Sensorkomp.	1056	0	3	0.28
B-Feld Sensor	176	0	1	0.57

Chamber Installation

At the surface



Installation in sektor 08



On the way down...



Chamber Installation

Docking...



Positioning of Stations



Winches



View of Sector 02



Chamber Installation Feet Sectors

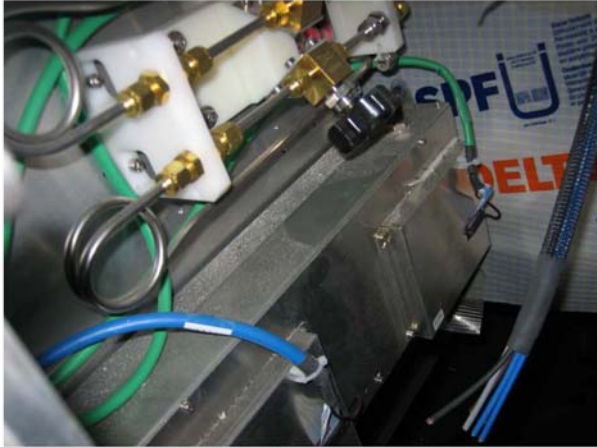


H.Kroha

24.04.2006

Serious concern: Metal dust in the cavern

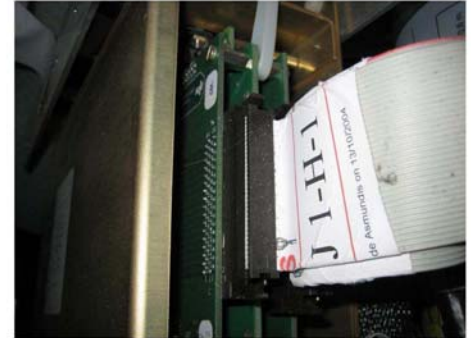
MDT Faraday cage BOF1A12



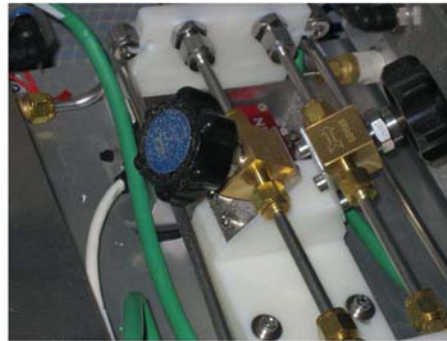
BOF1A12 Top



Splitter and Pad Boxes



Gas System



RPC connector BOF1A12



Metal Dust from Rails



