

Computing at MPI

Stefan Kluth

ATLAS

Computing commission, chairman

MPI Project Review, 18.12.06

Personell C/N Group

Head of group: Leupold, U.

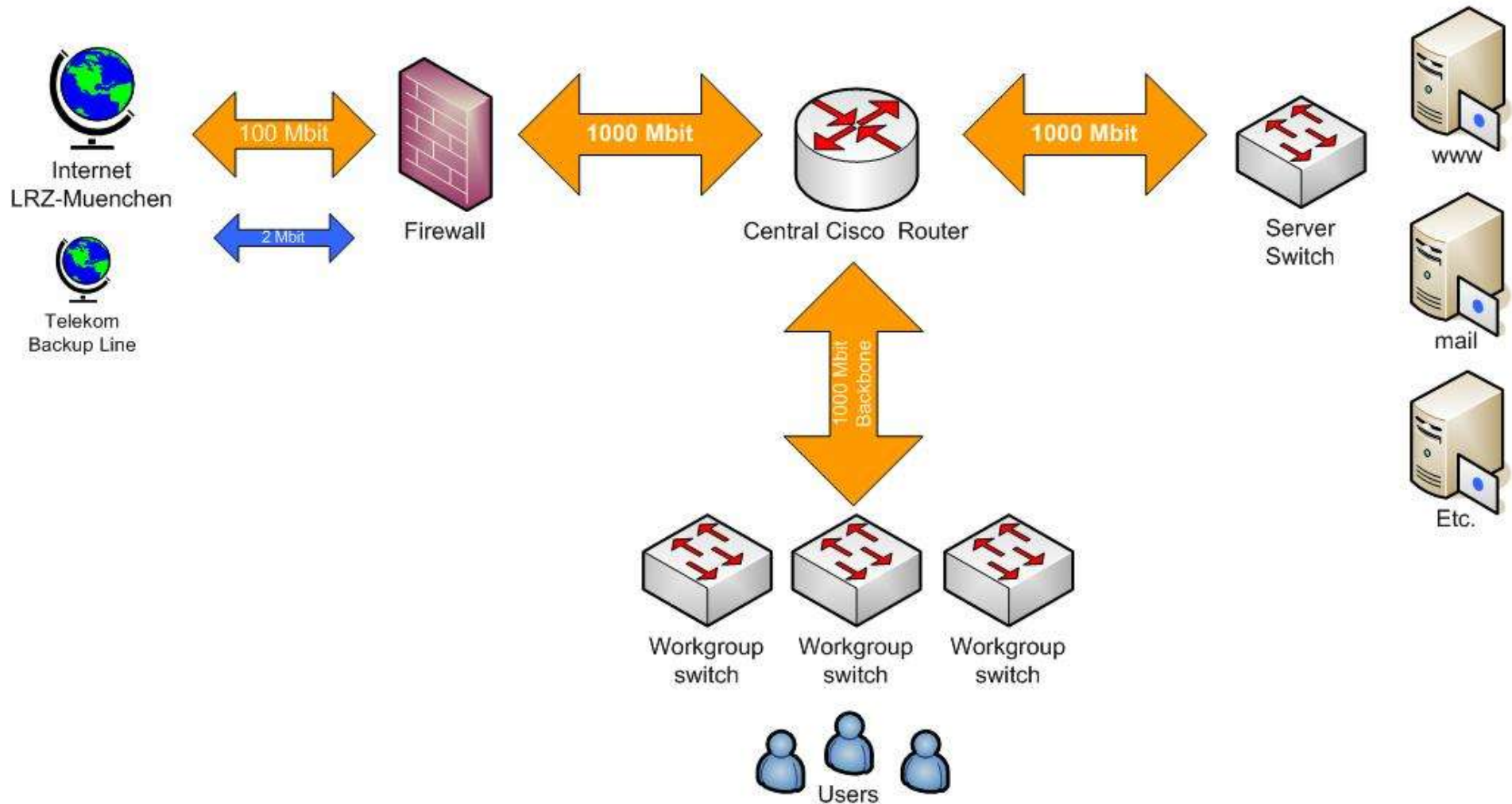
	Linux	MS	SW	LAN	HW	SW	Grid
Leupold, U.	x	x	x	x	x	x	
Kriesel, A.	x(reg.)				x		
Kraemer, M.				x			
Pan, Y.	(x)	x					
Salihagic, D.	x		x				x
Vidal, M.	x(AIX)				x	x	
Krebs, K.				x			

Hardware Overview

- Central servers
 - batch farm (15 dual CPU), condor
 - 13 file servers with 19 TB
 - mail, web, DNS, accounts
- Experimental and engineering groups
 - ca. 270 PCs, 2/3 Linux, 1/3 MS, Intel and AMD, partially condor
- Theory group
 - 78 PCs (Linux), Intel and AMD, condor

LAN

General Network Overview



Software overview

- OS
 - Linux (MPI, Debian (ATLAS), peb (theory))
 - AIX (servers), Solaris (Elektronik)
 - MacOSX, VMS without C/N support
 - MS Windows (Admin, Labs, h1win, thwin)
- Applications/libraries
 - Mathematica, Maple, Portland pgf compiler, IDL, NAG (Theory)
 - xlf on MacOSX (Exp.)
 - OSS in consultation with C/N group

MPI computing commission

- Subcommittee of IA
 - Members: Bethke, Hahn, Kluth, Leupold, Wagner, (Schieck), (Wassatsch)
- Mandate
 - oversight of C/N operations
 - medium- and longterm planning
- Please consult before buying hardware or requiring services

Rahmenvertrag BW

- **MPG joined procurement contract for IT**
 - Hardware small and big, LAN, software, services
 - order without tendering procedure
 - competitive prices (still check F&L prices)
 - FSC, HP(LAN), Acer, IBM, ...
- **Experience**
 - Good for standard orders
 - Companies respond well

Current activities

- Hardware replacements
 - central servers from AIX to HA-Linux
 - h1win, thwin new hardware
 - (ATLAS) account server to HA-Linux
- Software
 - Migrate ATLAS to Debian
 - CDS → Indico
 - ...

Computing at RZG

- MPI has Linux cluster at RZG
 - 7 IBM BladeCenter, 98 servers (HS20 Dual Xeon 3/3,2 Ghz, 4 GB RAM)
 - ca. 60 TB Fileserver
 - SLES9, SGE, LCG3/glite, mr-afs, dcache
- Operation
 - Main users ATLAS (WLCG), MAGIC
 - Open for all MPI groups (10% share)
 - need RZG account

Computing at RZG Experience

- Hardware
 - CPU Server: no failures
 - Fileserver: stable this year (all disks replaced)
- Software
 - mr-afs not solid under load (ATLAS)
 - SGE sometimes unstable
- Operation
 - usually efficient, 5x8, RZG renovations
 - support@rzg.mpg.de

Computing at RZG

- Major expansion planned
 - ATLAS Tier-2/3 centre
 - MAGIC analysis centre
 - Other MPI groups?
- Other tasks possible at RZG
 - AIX (xlf)
 - Parallel computing