

MPI-CPfS Dresden



MPI CPfS
2010

- Chemische und Physikalische Festkörperforschung
- 4 Direktoren
- Ca. 200 Mitarbeiter
- Werkstatt 13 Mitarbeiter
- Keine Konstruktionsabteilung
- CAD Autodesk Inventor
- CAM Hypermill in Inventor

Konstruktion und Fertigung des Anschauungsmodells “Otoconium“

Jörg Scharsach



MPI CPfS
2010

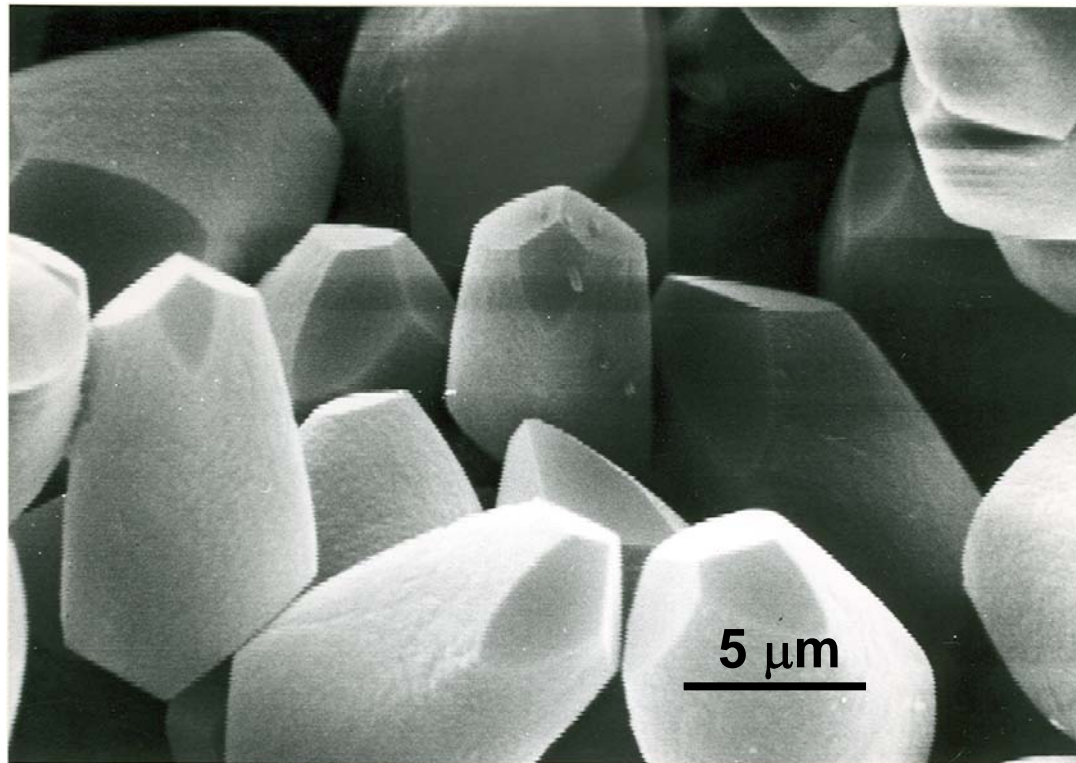
- Was ist ein Otoconium ?
- Grundlagen und Basis der Konstruktion
- Konstruktion des Modells
- Fertigung der Baugruppe

- Weitere Projekte

Biogenetische Otoconien



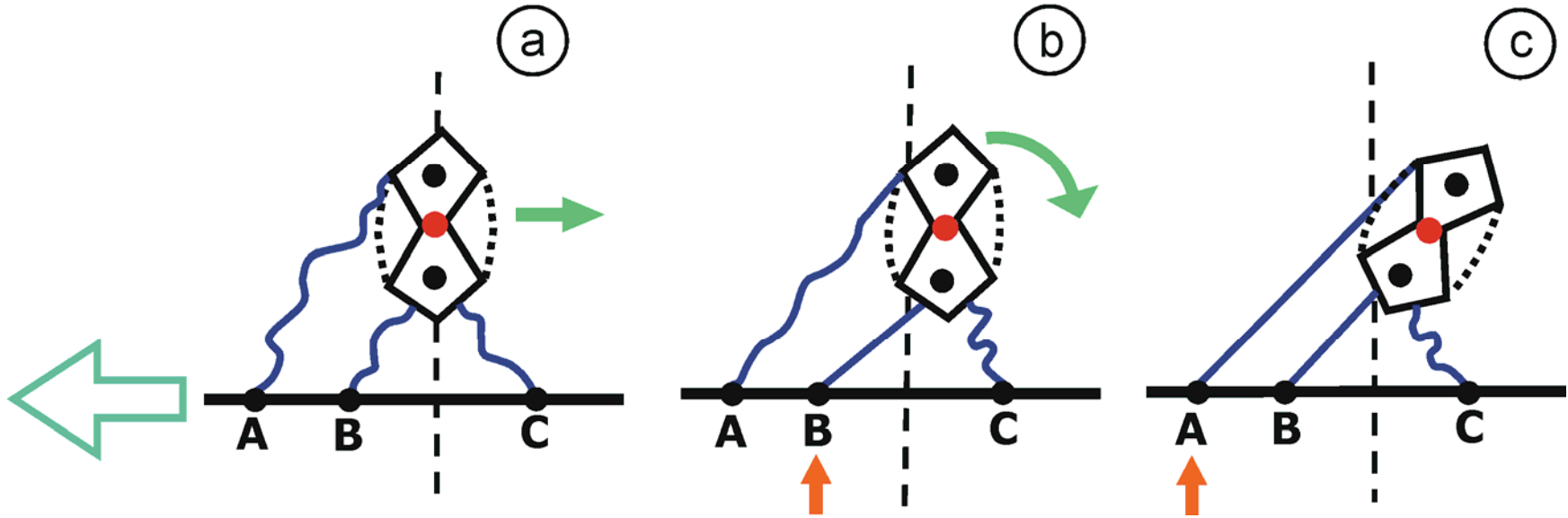
MPI CPfS
2010





MPI CPfS
2010

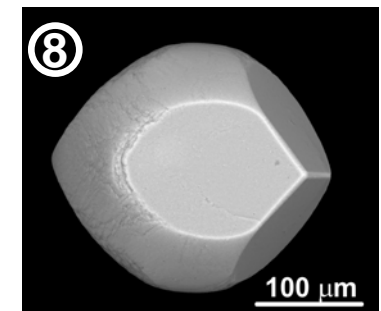
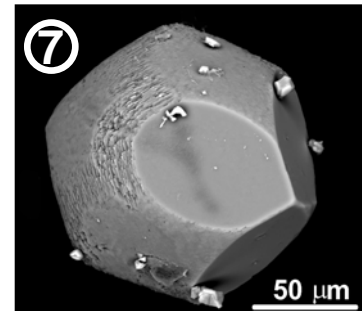
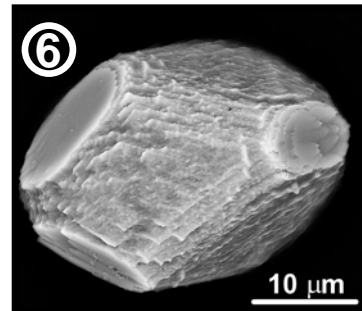
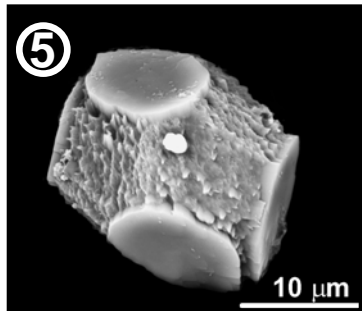
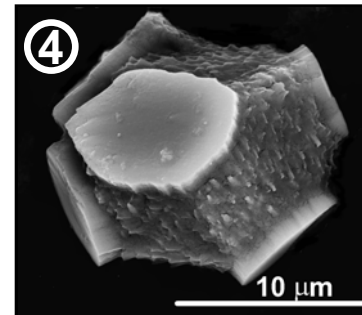
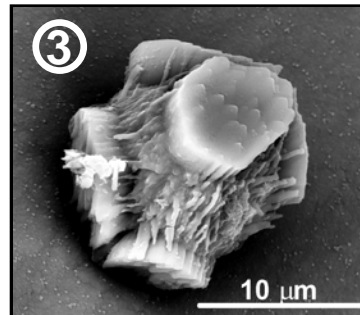
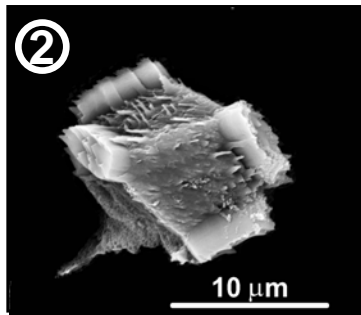
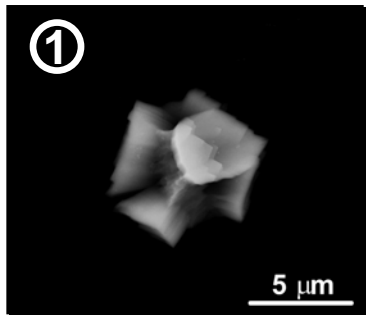
Die Funktion der Otoconien





MPI CPfS
2010

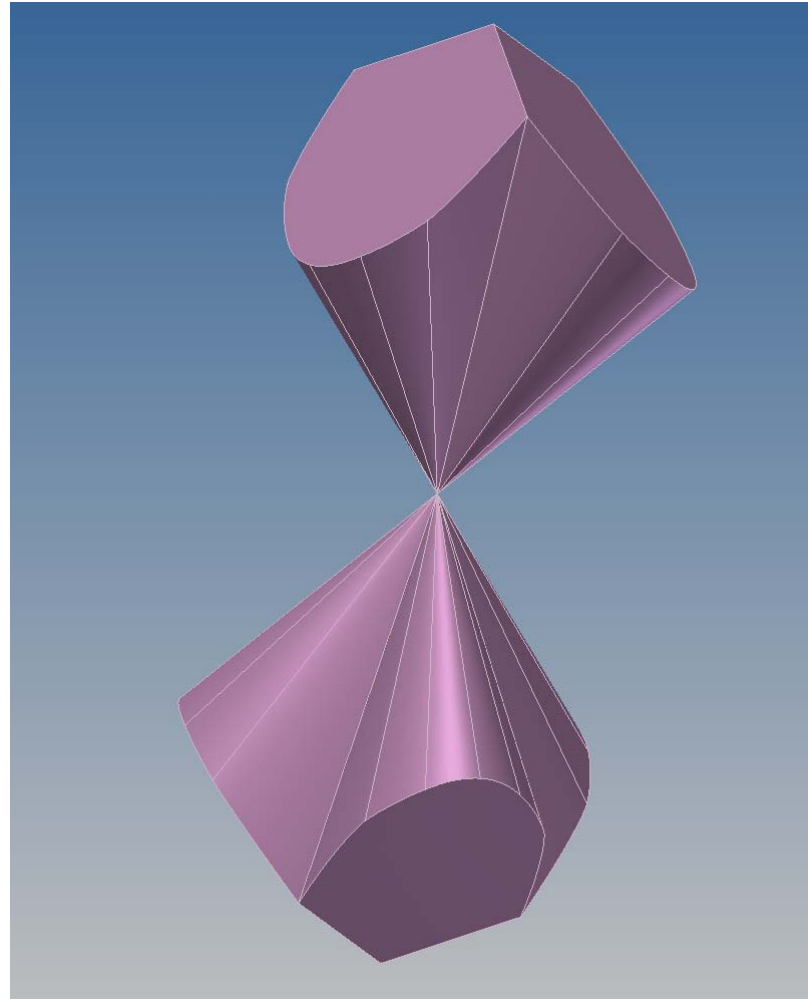
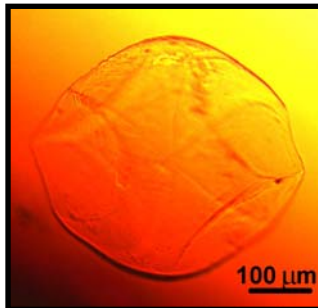
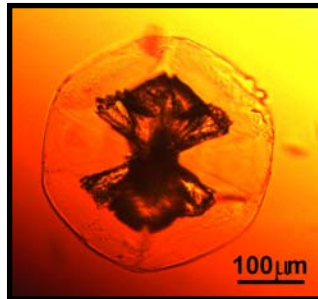
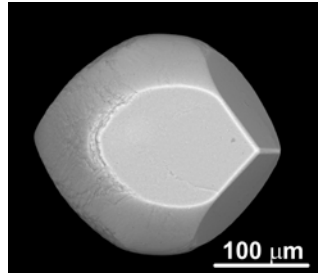
OTOCONIEN: Wachstumsphasen





MPI CPfS
2010

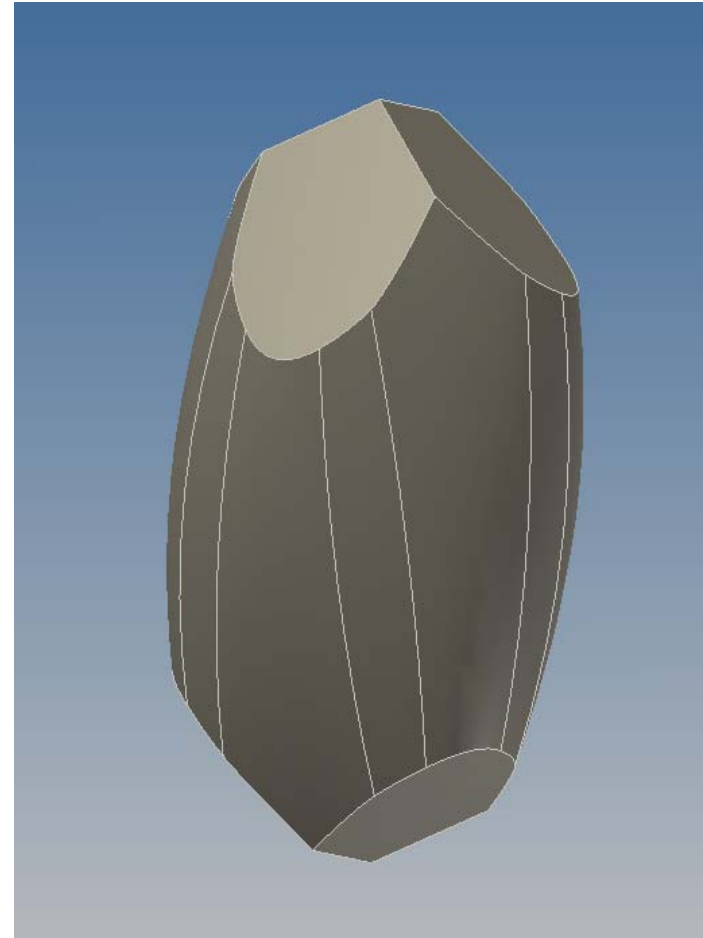
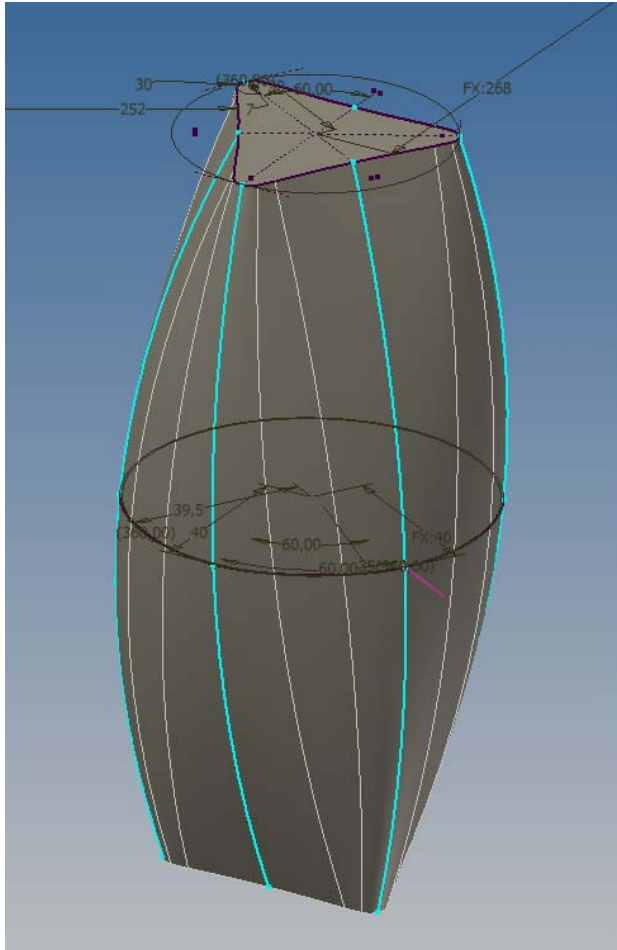
Grundlagen und Basisinformationen zur Konstruktion



Erstellung Grundkörper



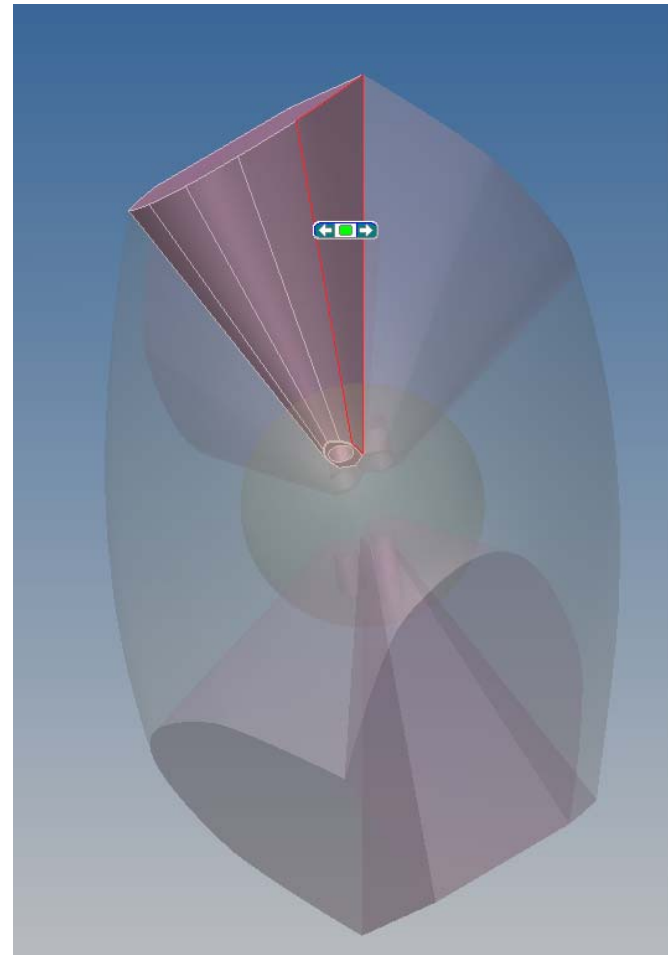
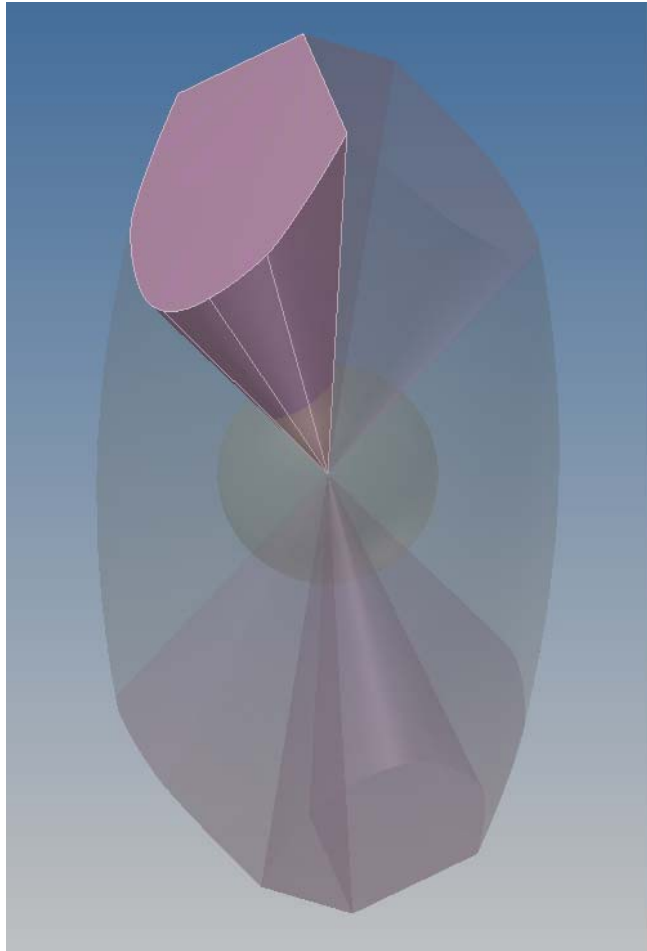
MPI CPfS
2010



Modellierung des Arms aus der Baugruppe heraus



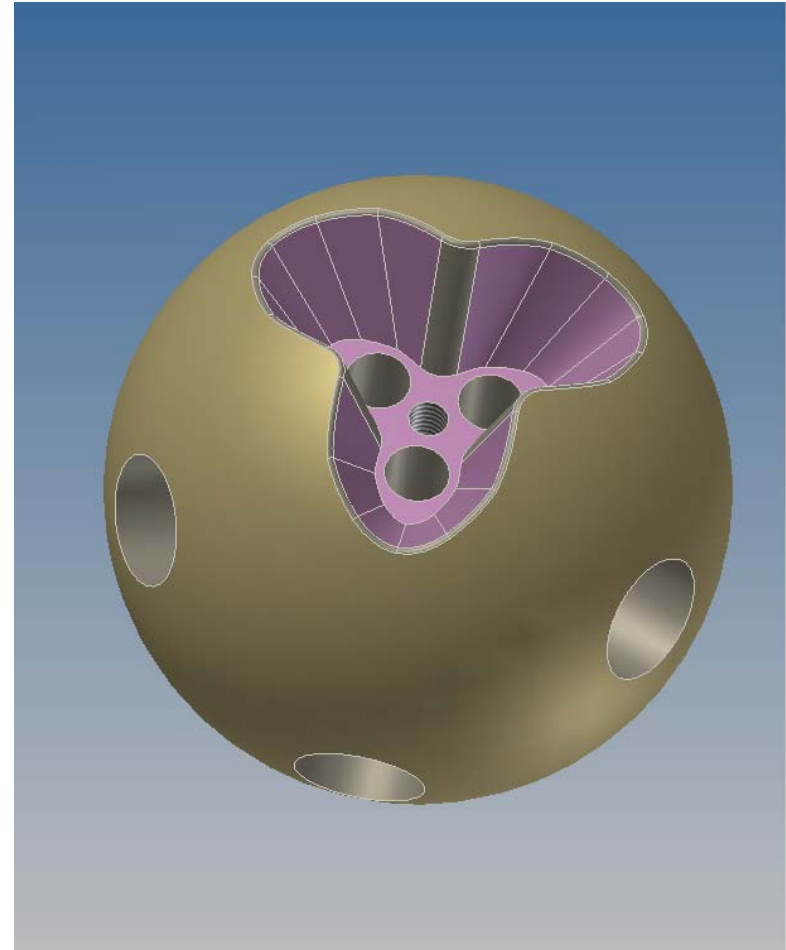
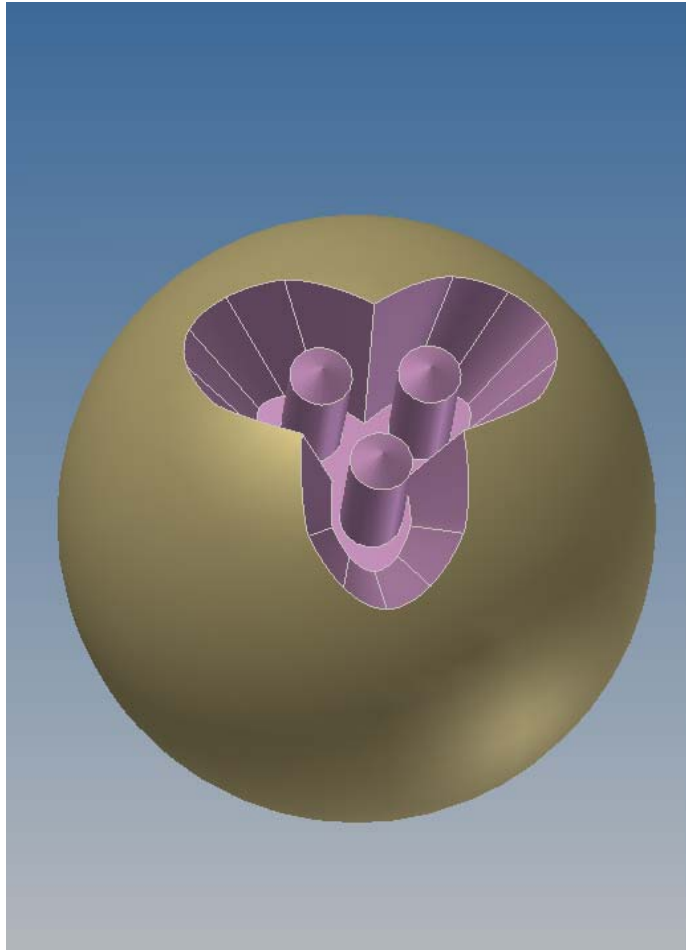
MPI CPfS
2010



Entstehung der Kugel



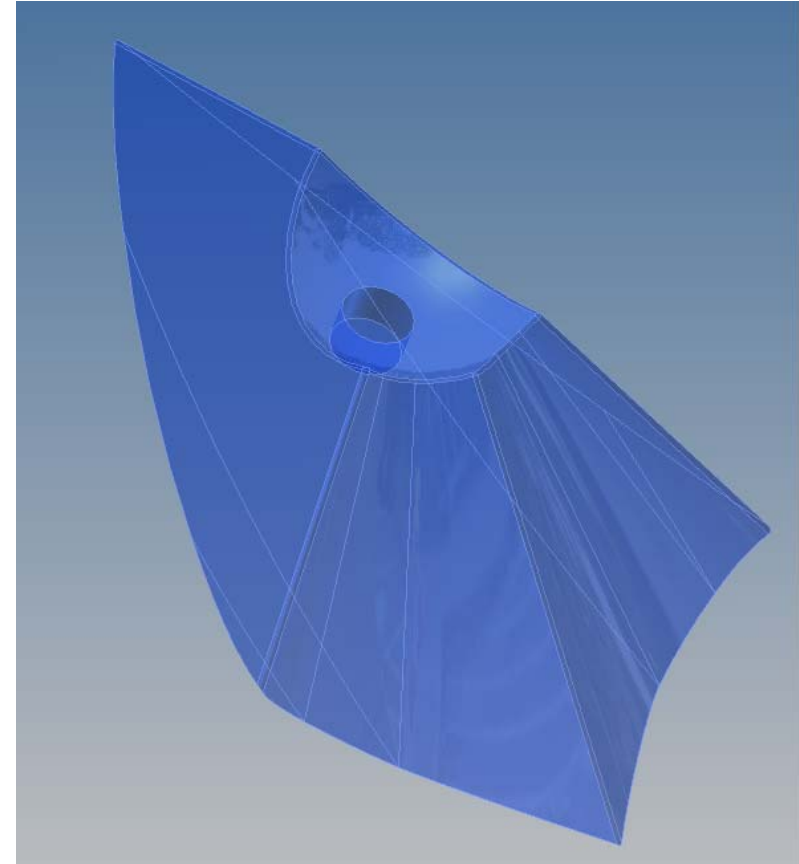
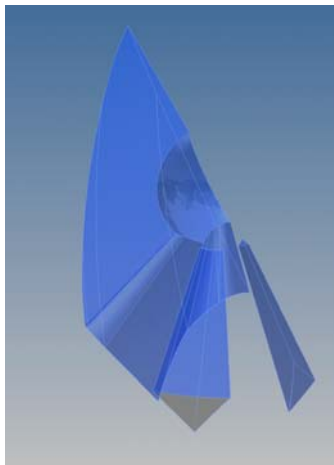
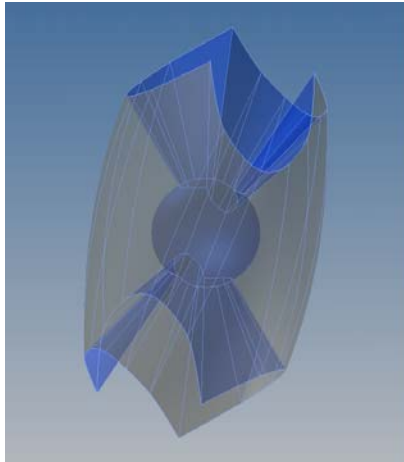
MPI CPfS
2010



Herausschneiden der Schalensegmente



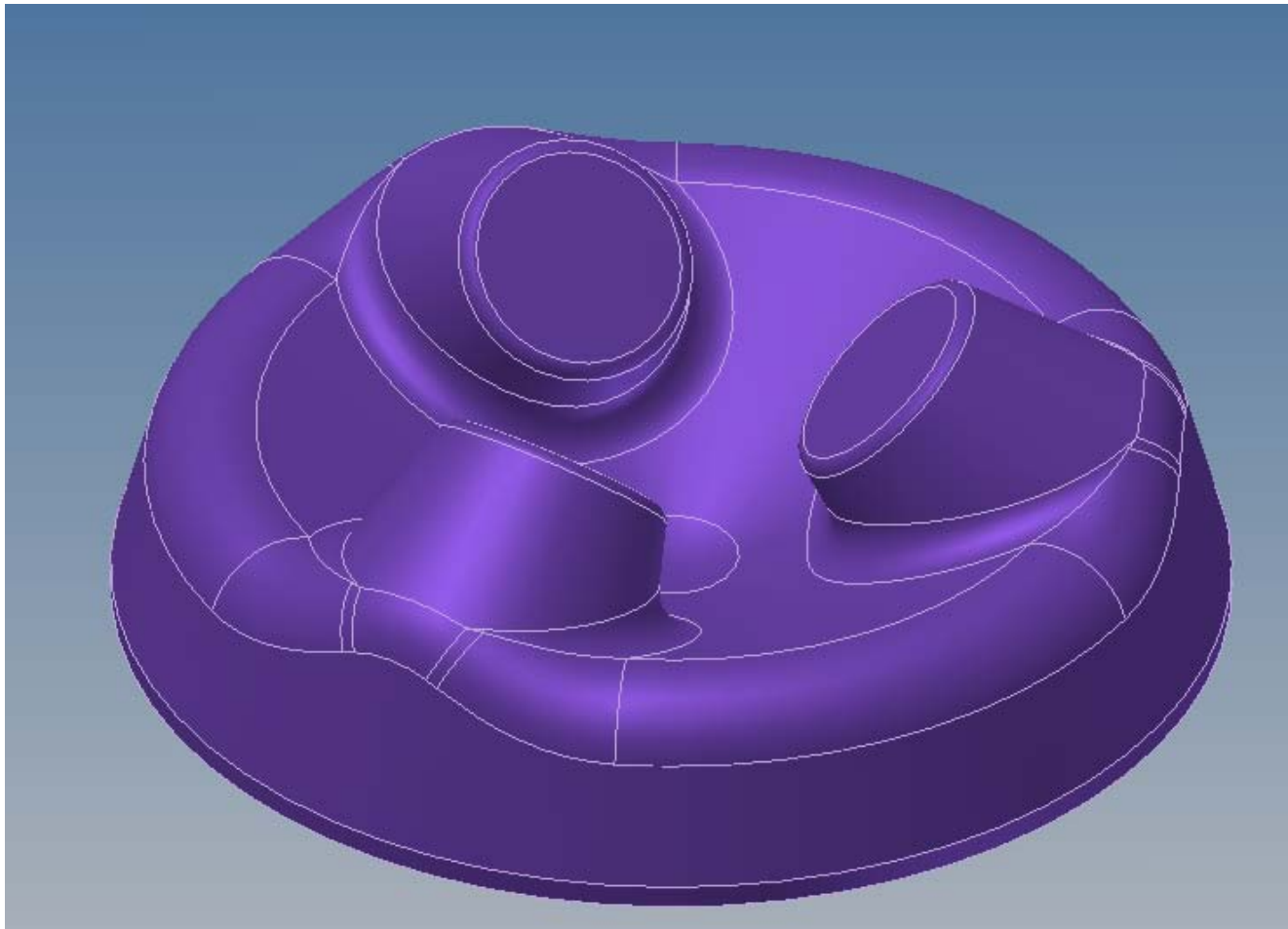
MPI CPfS
2010



Modellständer



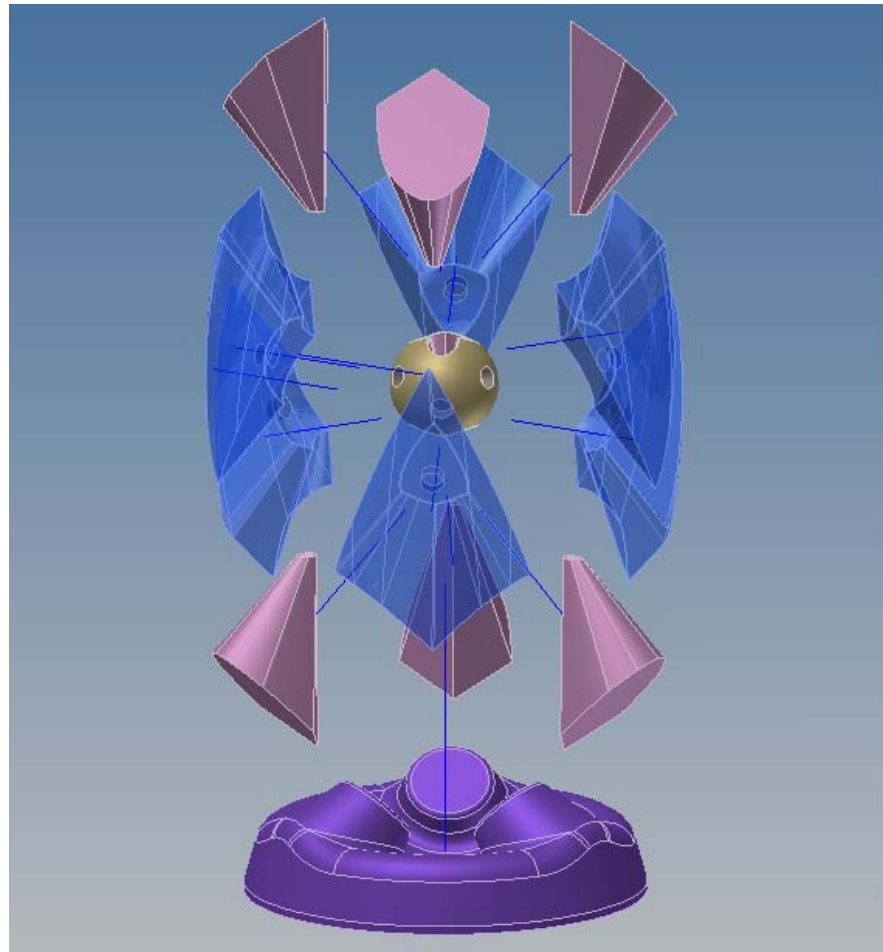
MPI CPfS
2010





MPI CPfS
2010

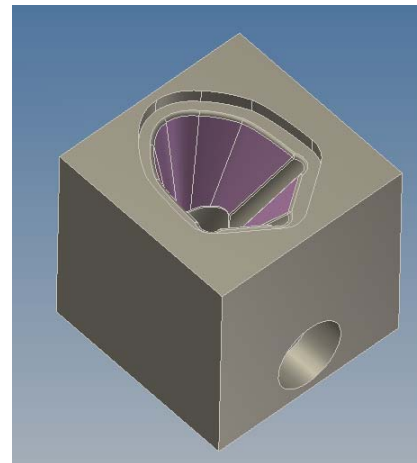
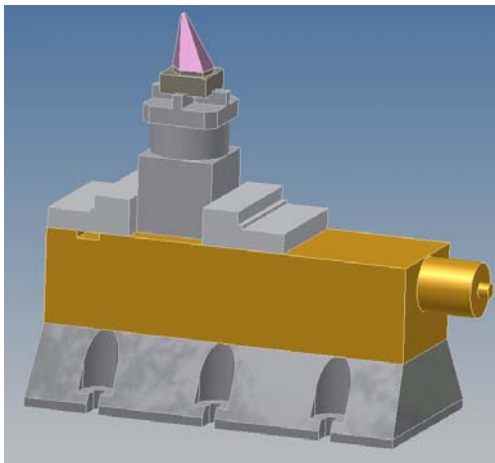
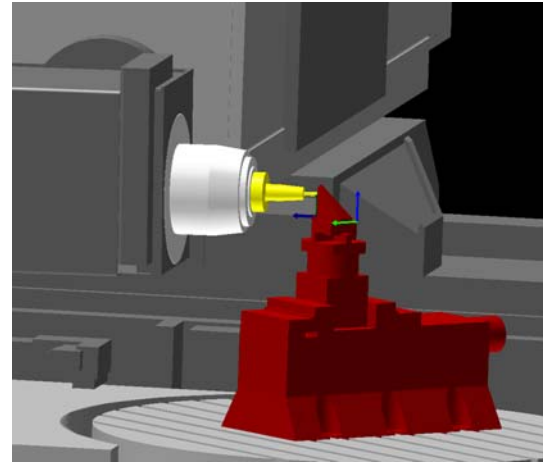
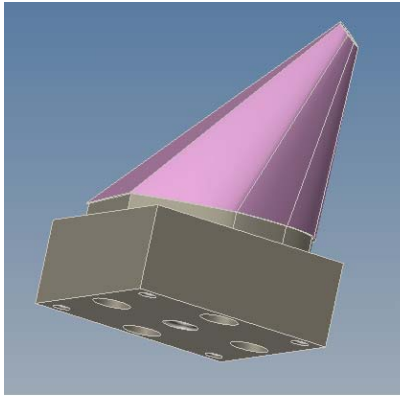
Explosionsdarstellung Modell



Fertigung der Arme



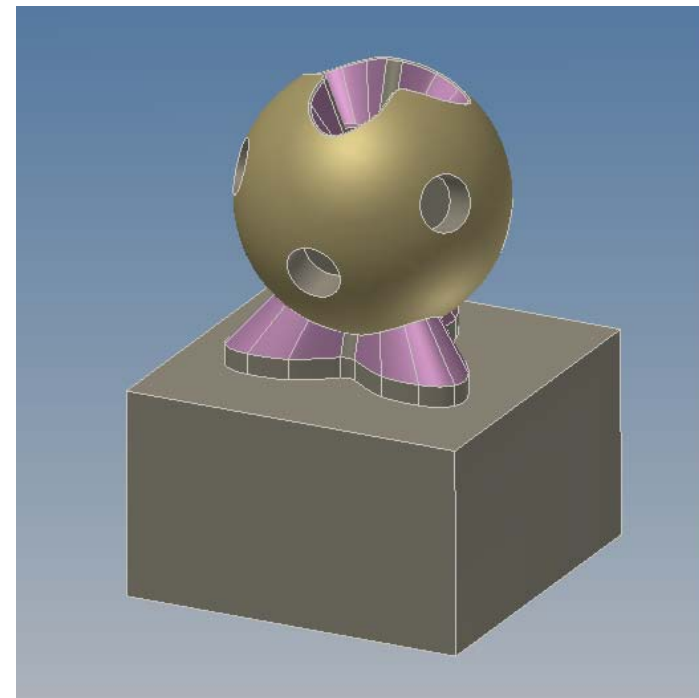
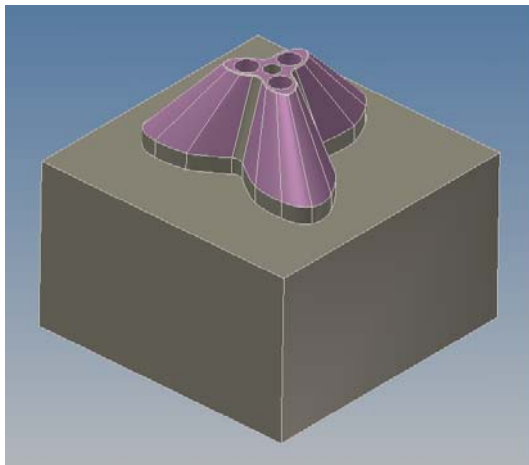
MPI CPfS
2010



Bearbeitung Kugel



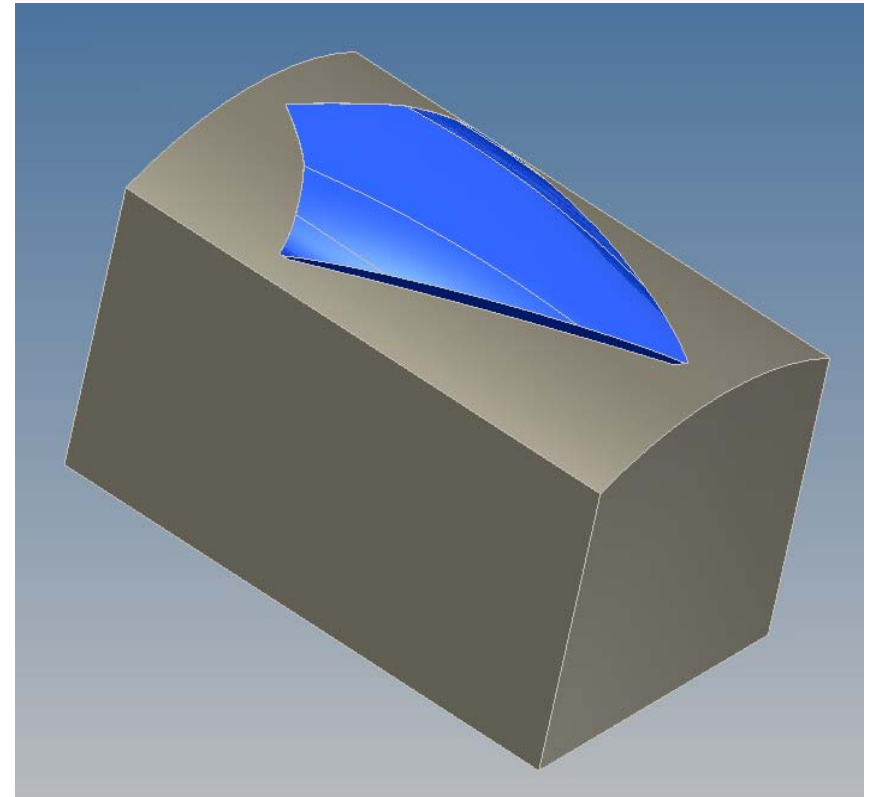
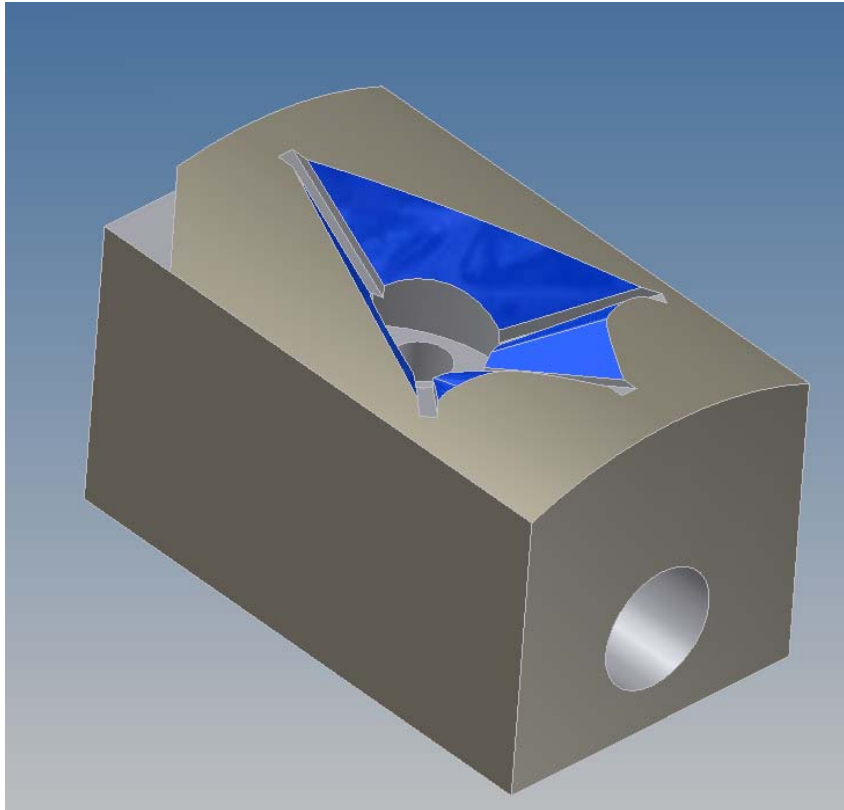
MPI CPfS
2010



Herstellung der Schalensegmente



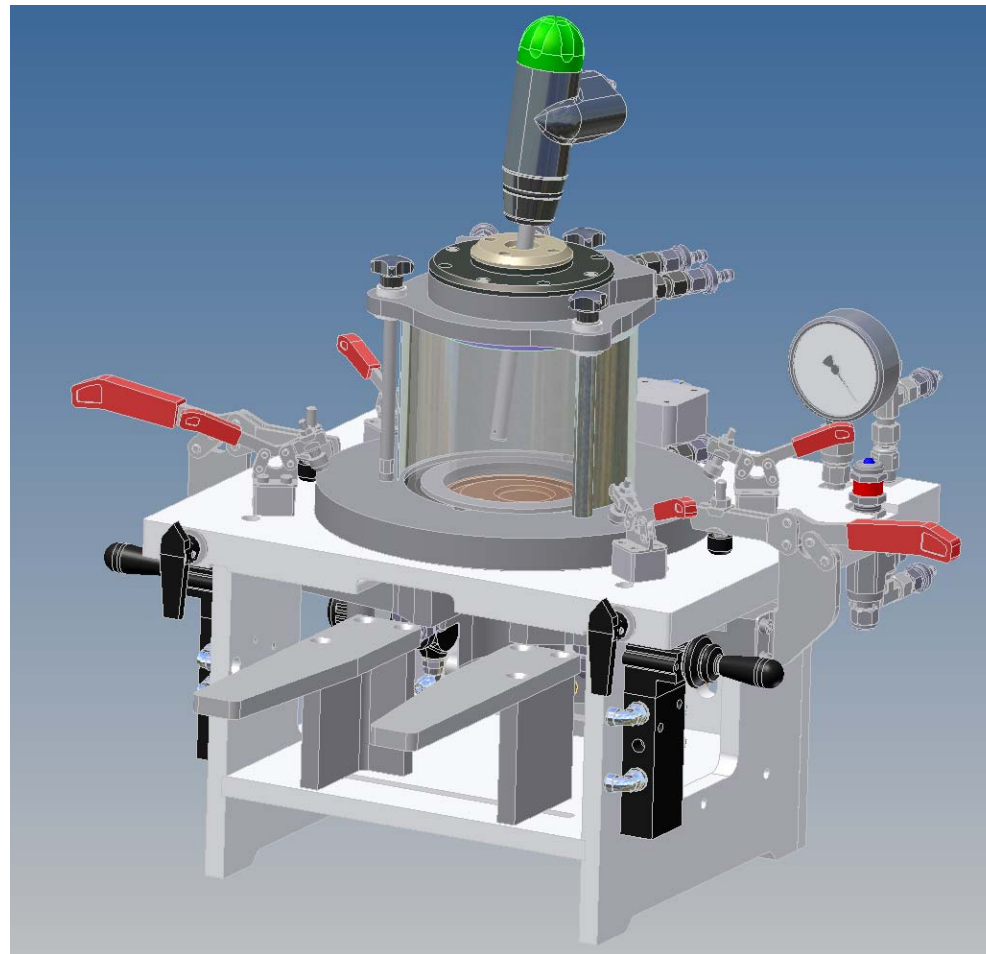
MPI CPfS
2010



Lichtbogenofen



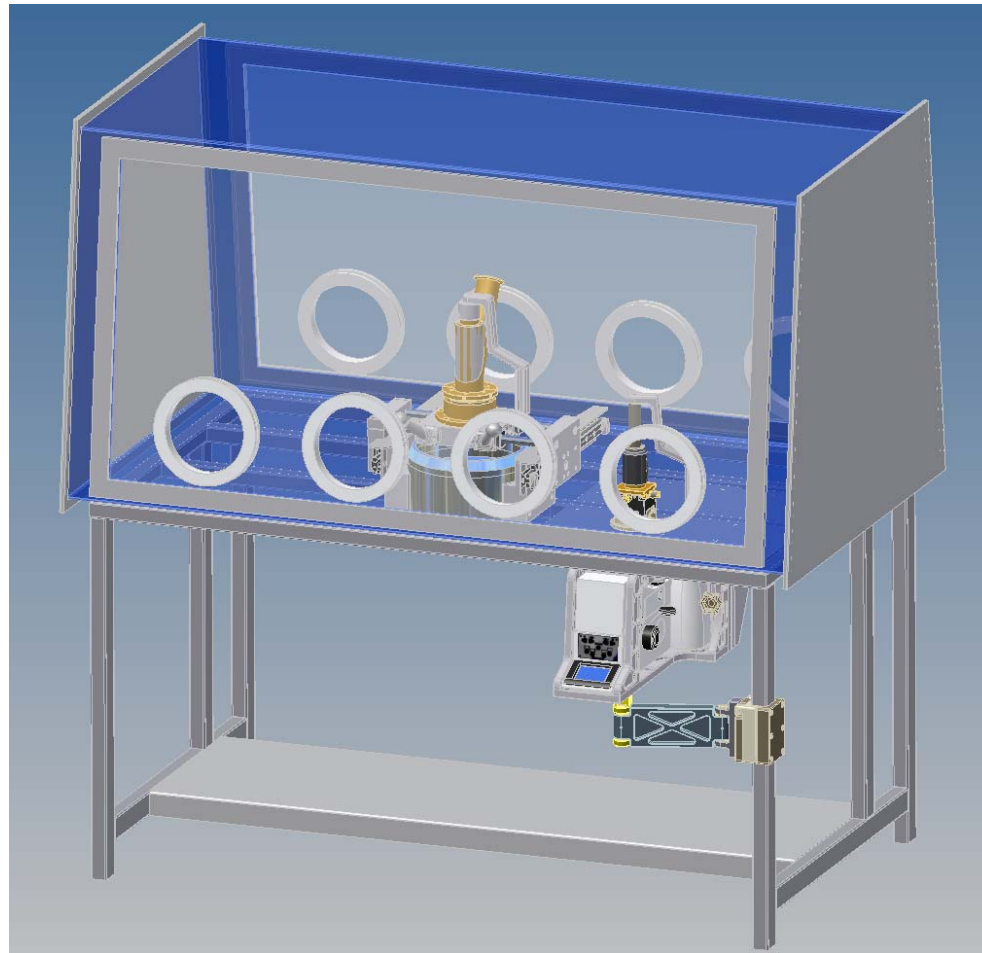
MPI CPfS
2010



Mikroskopanbau



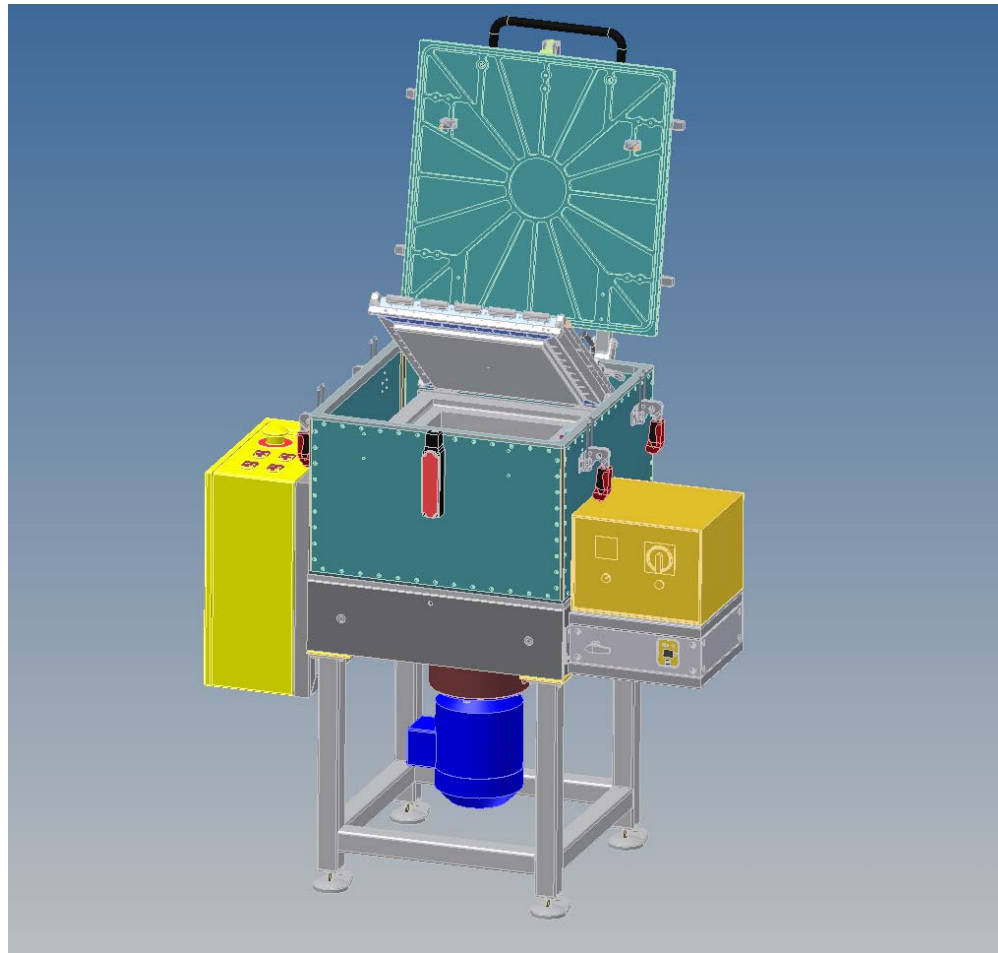
MPI CPfS
2010



Schmelzetrennung



MPI CPfS
2010





MPI CPfS
2010

**Vielen Dank
Für ihre
Aufmerksamkeit**